

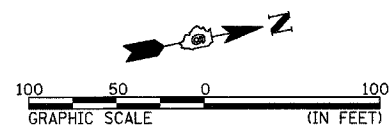
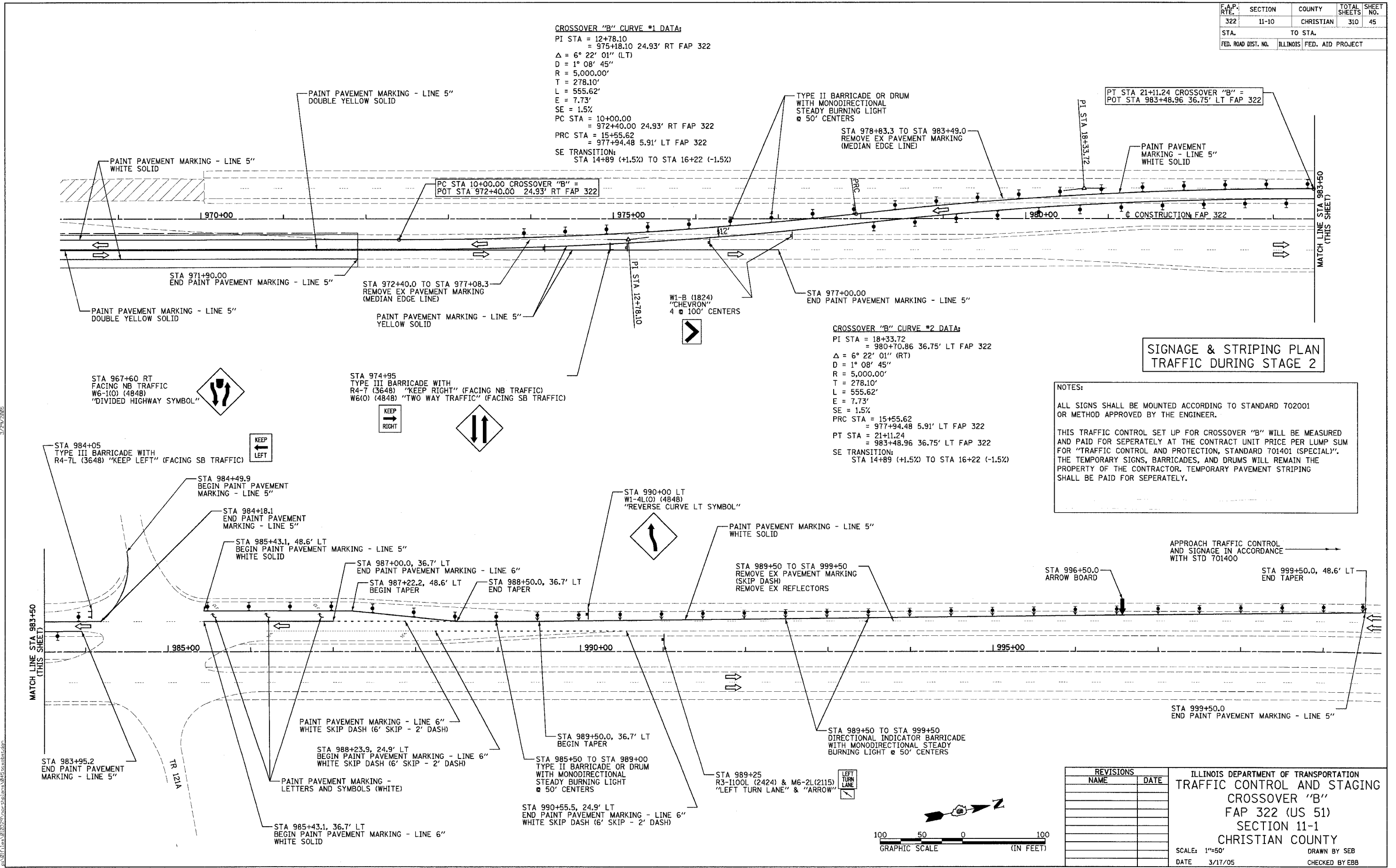
F.A.P. RTE.	SECTION	COUNTY	TOTAL SHEETS	SHEET NO.
322	11-10	CHRISTIAN	310	45
STA.		TO STA.		
FED. ROAD DIST. NO.		ILLINOIS	FED. AID PROJECT	

**CROSSOVER "B" CURVE #1 DATA:**  
 PI STA = 12+78.10  
 = 975+18.10 24.93' RT FAP 322  
 $\Delta = 6^\circ 22' 01''$  (LT)  
 $D = 1^\circ 08' 45''$   
 $R = 5,000.00'$   
 $T = 278.10'$   
 $L = 555.62'$   
 $E = 7.73'$   
 $SE = 1.5\%$   
 PC STA = 10+00.00  
 = 972+40.00 24.93' RT FAP 322  
 PRC STA = 15+55.62  
 = 977+94.48 5.91' LT FAP 322  
 SE TRANSITION:  
 STA 14+89 (+1.5%) TO STA 16+22 (-1.5%)

**CROSSOVER "B" CURVE #2 DATA:**  
 PI STA = 18+33.72  
 = 980+70.86 36.75' LT FAP 322  
 $\Delta = 6^\circ 22' 01''$  (RT)  
 $D = 1^\circ 08' 45''$   
 $R = 5,000.00'$   
 $T = 278.10'$   
 $L = 555.62'$   
 $E = 7.73'$   
 $SE = 1.5\%$   
 PRC STA = 15+55.62  
 = 977+94.48 5.91' LT FAP 322  
 PT STA = 21+11.24  
 = 983+48.96 36.75' LT FAP 322  
 SE TRANSITION:  
 STA 14+89 (+1.5%) TO STA 16+22 (-1.5%)

**SIGNAGE & STRIPING PLAN  
 TRAFFIC DURING STAGE 2**

**NOTES:**  
 ALL SIGNS SHALL BE MOUNTED ACCORDING TO STANDARD 702001 OR METHOD APPROVED BY THE ENGINEER.  
 THIS TRAFFIC CONTROL SET UP FOR CROSSOVER "B" WILL BE MEASURED AND PAID FOR SEPERATELY AT THE CONTRACT UNIT PRICE PER LUMP SUM FOR "TRAFFIC CONTROL AND PROTECTION, STANDARD 701401 (SPECIAL)". THE TEMPORARY SIGNS, BARRICADES, AND DRUMS WILL REMAIN THE PROPERTY OF THE CONTRACTOR. TEMPORARY PAVEMENT STRIPING SHALL BE PAID FOR SEPERATELY.



REVISIONS	
NAME	DATE

ILLINOIS DEPARTMENT OF TRANSPORTATION  
**TRAFFIC CONTROL AND STAGING  
 CROSSOVER "B"**  
 FAP 322 (US 51)  
 SECTION 11-1  
 CHRISTIAN COUNTY

SCALE: 1"=50'  
 DATE: 3/17/05

DRAWN BY SEB  
 CHECKED BY EBB

3/20/2005