

SW 1/4 SEC 36, T13N, R1E, 3RD PM

SEE SHEET 102 FOR 714+45 CROSSOVER GEOMETRICS

2- STA 714+45.0 84.7' LT PIPE CULVERT, CS/A, TY 1, 30" Ø, 86' USFL = 632.75 (714+05.4, 84.6' RT) DSFL = 631.89 (714+91.4, 84.9' LT)

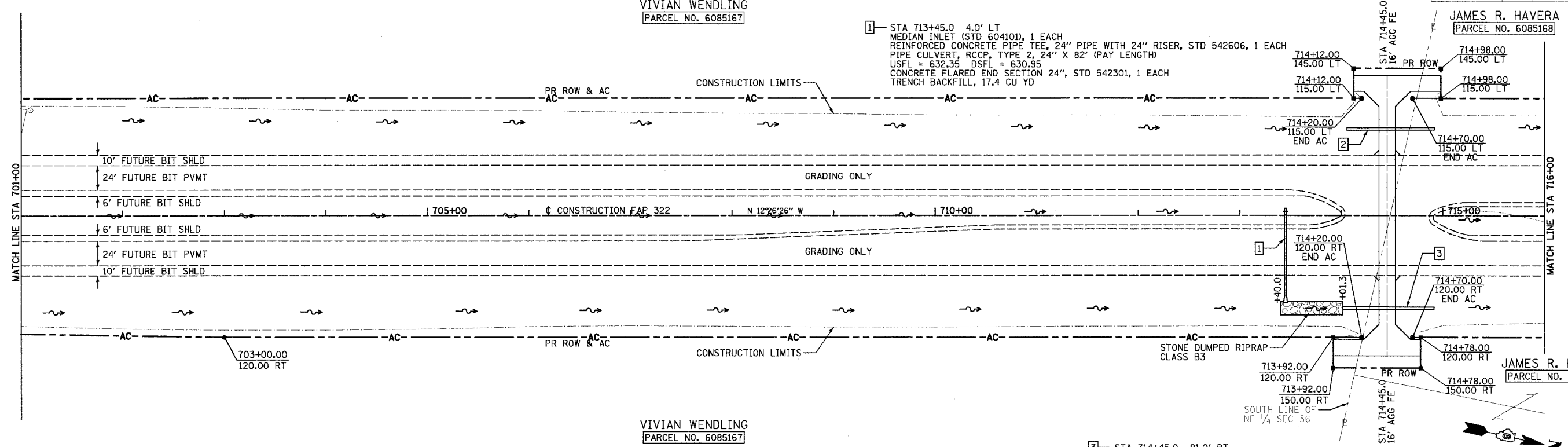
F.A.P. RTE.	SECTION	COUNTY	TOTAL SHEETS	SHEET NO.
322	11-10	CHRISTIAN	310	52
STA.		TO STA.		
FED. ROAD DIST. NO.		ILLINOIS FED. AID PROJECT		

VIVIAN WENDLING
PARCEL NO. 6085167

1- STA 713+45.0 4.0' LT MEDIAN INLET (STD 60410), 1 EACH REINFORCED CONCRETE PIPE TEE, 24" PIPE WITH 24" RISER, STD 542606, 1 EACH PIPE CULVERT, RCCP, TYPE 2, 24" X 82" (PAY LENGTH) USFL = 632.35 DSFL = 630.95 CONCRETE FLARED END SECTION 24", STD 542301, 1 EACH TRENCH BACKFILL, 17.4 CU YD

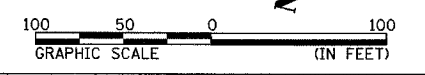
JAMES R. HAVERA
PARCEL NO. 6085168

JAMES R. HAVERA
PARCEL NO. 6085168



VIVIAN WENDLING
PARCEL NO. 6085167

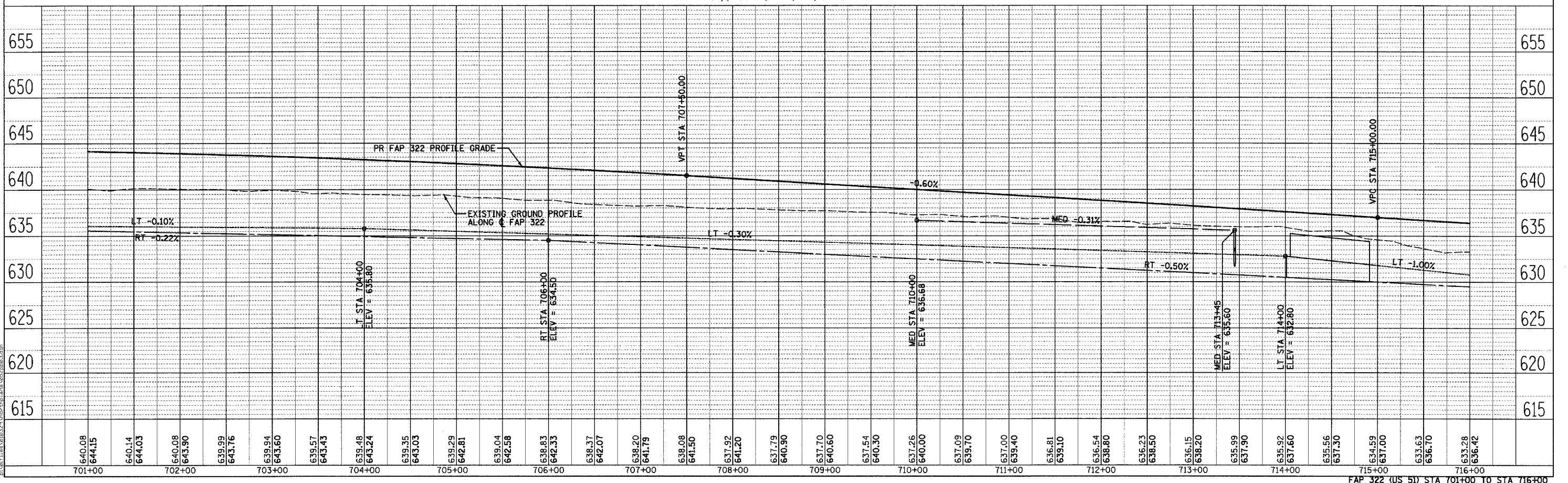
3- STA 714+45.0 91.0' RT PIPE CULVERT, CS/A, TY 2, 30" Ø, 90' USFL = 630.49 (714+01.3, 90.9' RT) DSFL = 630.04 (714+91.3, 91.0' RT)



SW 1/4 SEC 36, T13N, R1E, 3RD PM

PLAN	SURVEYED	DATE
	NOTED	
	CHECKED	
	BY	
	NO.	

PROF. ILE.	SURVEYED	DATE
	NOTED	
	CHECKED	
	BY	
	NO.	



FAP 322 (US 51) STA 701+00 TO STA 716+00

3/29/2005