

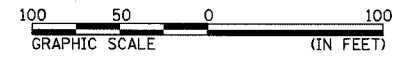
F.A.P. RTE.	SECTION	COUNTY	TOTAL SHEETS	SHEET NO.
322	11-10	CHRISTIAN	310	73
STA. TO STA.		ILLINOIS FED. AID PROJECT		

AD758 #1 CURVE DATA:
 PI STA = 12+52.01
 = 758+80.00 36.16' RT FAP 322
 Δ = 17° 20' 18" (LT)
 D = 57' 17" 45"
 R = 100.00'
 T = 15.25'
 L = 30.26'
 E = 1.16'
 SE = NONE
 PC STA = 12+36.76
 = 758+84.57 21.60' RT FAP 322
 PT STA = 12+67.03
 = 758+80.00 51.40' RT FAP 322

IRENE MORRISON TRUST
 [PARCEL NO. 6085172]

VIVIAN WENDLING
 [PARCEL NO. 6085171]

SW 1/4 SEC 25, T13N, R1E, 3RD PM



PLAN	DATE	BY
SURVEYED		
ALIGNED		
ADJUSTMENT CHECKED		
RT. OF WAY CHECKED		
NO. OF STAKES		
NO. OF PINS		
NO. OF WATERS		
NO. OF OTHERS		

PROFILE	DATE	BY
SURVEYED		
GRADES CHECKED		
ST. M. NOTED		
STRUCTURE NOTATIONS		

43 STA 10+50.0
 PIPE CULVERT, CLASS D, TY 1, 18" Ø, 38' (PAY LENGTH)
 USFL = 614.10 (18.6' RT)
 DSFL = 613.96 (19.1' LT)

WEST LINE OF SW 1/4 SEC 25

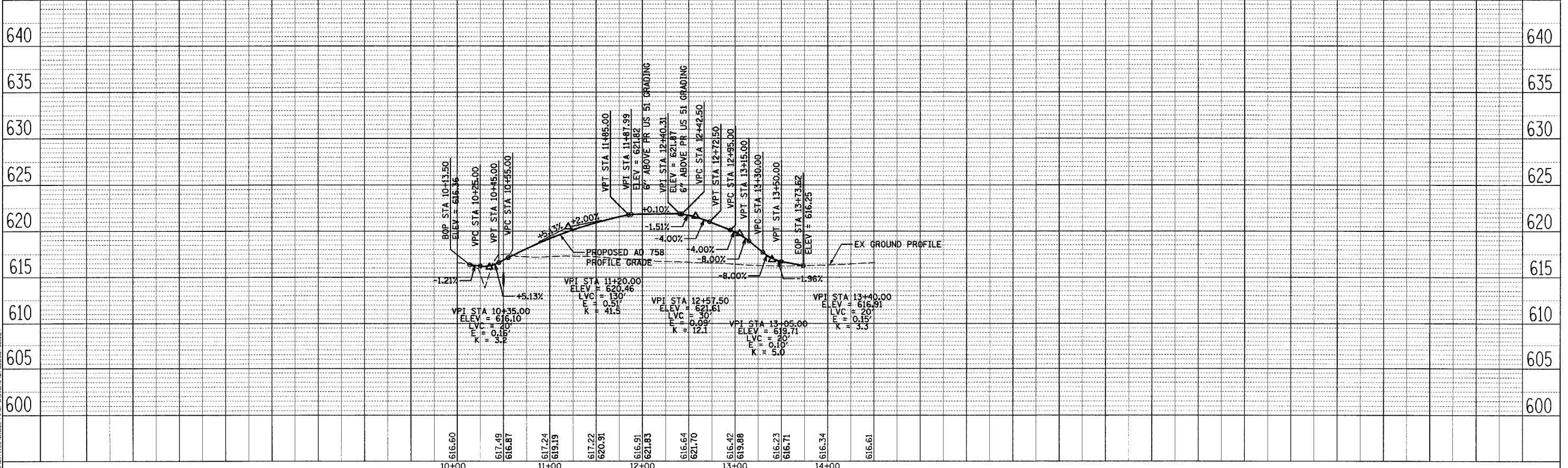
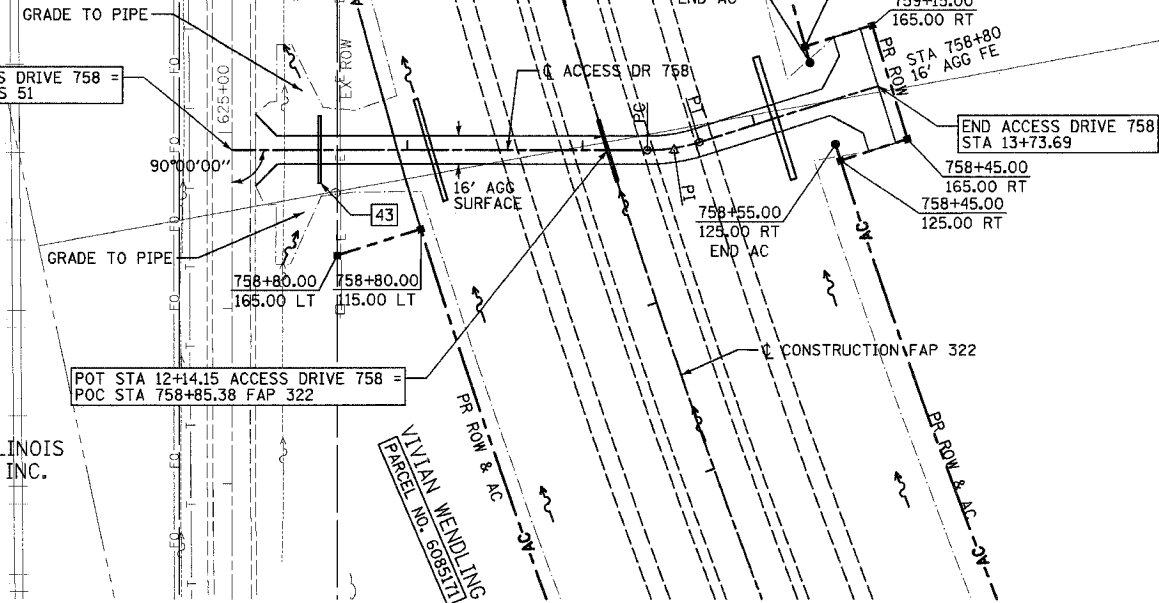
POT STA 10+00.00 ACCESS DRIVE 758 =
 POT STA 624+90.00 EX US 51

SEE FAP 322 PLAN & PROFILE SHEET 55
 FOR PIPE CULVERT DATA NOT SHOWN

CENTRAL ILLINOIS SHIPPERS, INC.

VIVIAN WENDLING
 [PARCEL NO. 6085171]

POT STA 12+14.15 ACCESS DRIVE 758 =
 POC STA 758+85.38 FAP 322



ACCESS DRIVE 758 STA 10+00 TO STA 13+73