

F.A.P. RTE.	SECTION	COUNTY	TOTAL SHEETS	SHEET NO.
322	11-1	CHRISTIAN	310	100
STA.		TO STA.		
FED. ROAD DIST. NO.	ILLINOIS	FED. AID PROJECT		

STATE OF ILLINOIS
DEPARTMENT OF TRANSPORTATION

PROP. CURVE TR193A
PI STA. = 13+48.95
 $\Delta = 04^\circ 21' 36''$ (RT)
D = 02° 17' 31"
R = 2,500.00'
T = 95.17'
L = 190.24'
E = 1.81'
P.C. STA. = 12+53.78
P.R.C. STA. = 14+44.02

PROP. CURVE TR193B
PI STA. = 15+04.12
 $\Delta = 02^\circ 45' 15''$ (LT)
D = 02° 17' 31"
R = 2,500.00'
T = 60.10'
L = 120.18'
E = 0.72'
P.R.C. STA. = 14+44.02
P.T. STA. = 15+64.20

SW 1/4 SEC 25, T13 N, R1 E, 3RD PM

SE 1/4 SEC 26, T13 N, R1 E, 3RD PM

PARCEL NO 6085171
VIVIAN WENDLING
SEE TABULATIONS ON SHEET 6

PARCEL NO 6085171
VIVIAN WENDLING
SEE TABULATIONS ON SHEET 6

PARCEL NO 6085169
BRANYAN FARMS, INC
SEE TABULATIONS ON SHEET 5

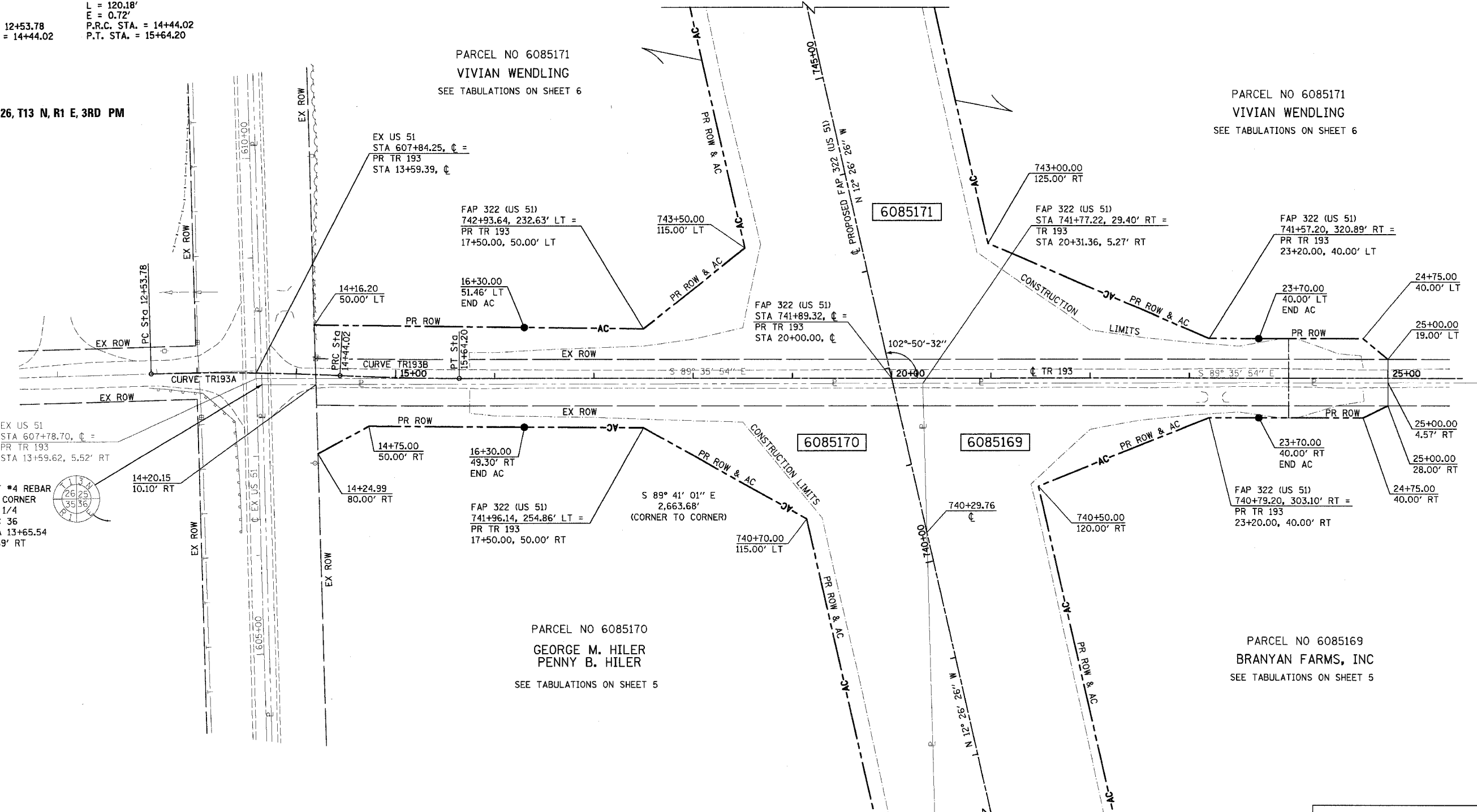
PARCEL NO 6085170
GEORGE M. HILER
PENNY B. HILER
SEE TABULATIONS ON SHEET 5

NE 1/4 SEC 35, T13 N, R1 E, 3RD PM

NW 1/4 SEC 36, T13 N, R1 E, 3RD PM

MAINLINE FAP 322 (US 51)
FOR CONTINUATION SEE SHEET 5

MAINLINE FAP 322 (US 51)
FOR CONTINUATION SEE SHEET 5



EX US 51
STA 607+78.70, $\phi =$
PR TR 193
STA 13+59.62, 5.52' RT

SET #4 REBAR
NW CORNER
NW 1/4
SEC 36
STA 13+65.54
11.69' RT

SET #4 REBAR
NE CORNER
NW 1/4
SEC 36

NOTES:
BEARINGS ARE BASED ON THE ILLINOIS STATE PLANE
COORDINATE SYSTEM, NAD83 1986 - WEST ZONE
SURVEYED IN ENGLISH.

PLAT DISTANCES AND STATIONING ARE IN GRID ENGLISH.
TO CONVERT TO GROUND DIVIDE BY GRID FACTOR.
GRID FACTOR = 1.00003150



RIGHT OF WAY PLANS

ROUTE	F.A.P. 322 (US 51)
SECTION	11-1
PROJECT	
COUNTY	CHRISTIAN
JOB NO.	R-96-008-95
STA 10+00	TO STA 25+00
SCALE	1 = 50'
SHEET NO. 22 OF 24	