

STATE OF ILLINOIS
DEPARTMENT OF TRANSPORTATION

F.A.P. RTE.	SECTION	COUNTY	TOTAL SHEETS	SHEET NO.
322	11-1	CHRISTIAN	310	102
STA.		TO STA.		
FED. ROAD DIST. NO.		ILLINOIS FED. AID PROJECT		

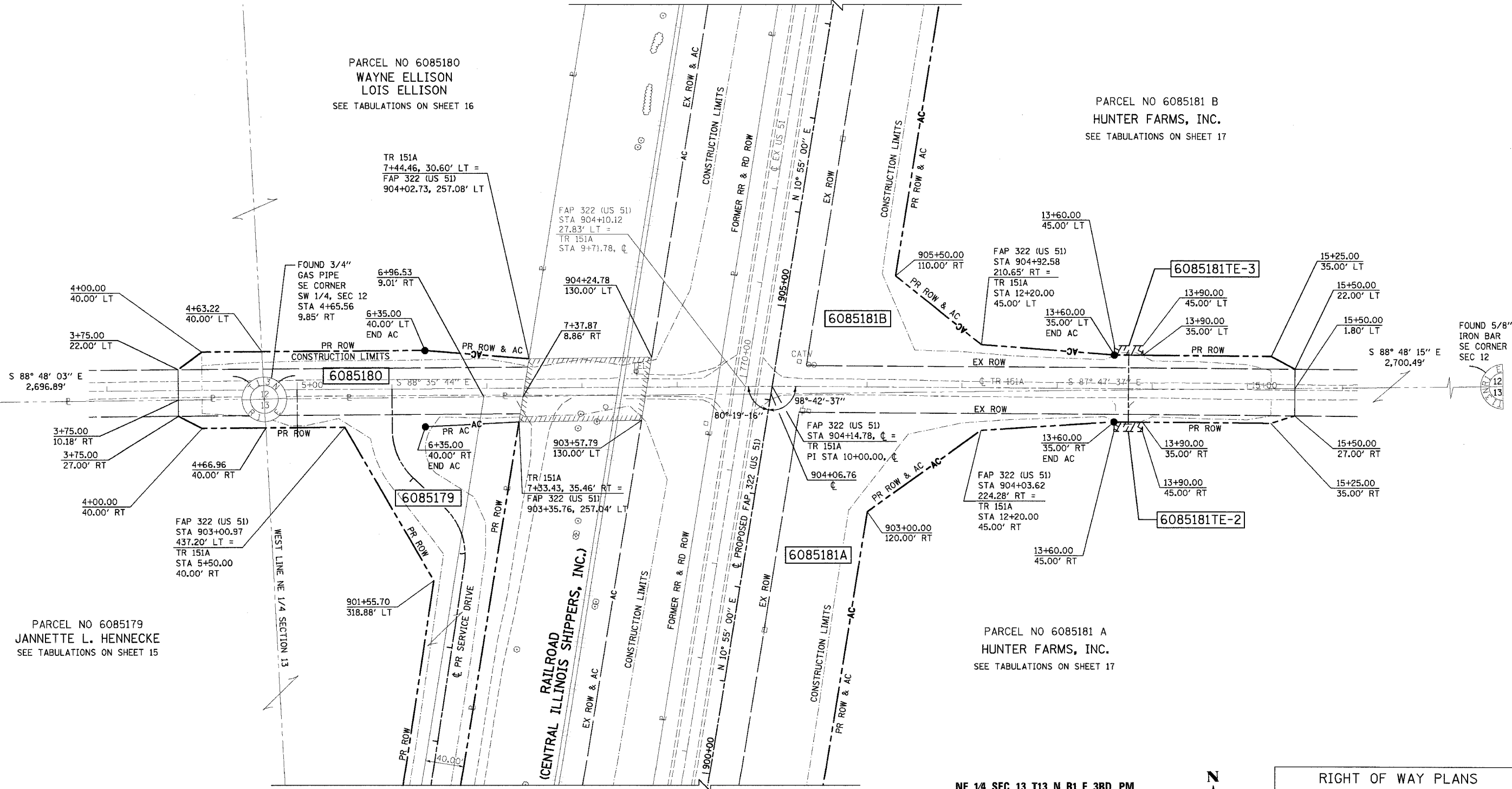
SW 1/4 SEC 12, T13 N, R1 E, 3RD PM

SE 1/4 SEC 12, T13 N, R1 E, 3RD PM

MAINLINE FAP 322 (US 51)
FOR CONTINUATION SEE SHEET 16

PARCEL NO 6085180
WAYNE ELLISON
LOIS ELLISON
SEE TABULATIONS ON SHEET 16

PARCEL NO 6085181 B
HUNTER FARMS, INC.
SEE TABULATIONS ON SHEET 17



PARCEL NO 6085179
JANNETTE L. HENNECKE
SEE TABULATIONS ON SHEET 15

PARCEL NO 6085181 A
HUNTER FARMS, INC.
SEE TABULATIONS ON SHEET 17

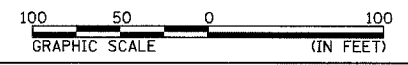
NW 1/4 SEC 13, T13 N, R1 E, 3RD PM

NE 1/4 SEC 13, T13 N, R1 E, 3RD PM

MAINLINE FAP 322 (US 51)
FOR CONTINUATION SEE SHEET 15 & 16

NOTES:
BEARINGS ARE BASED ON THE ILLINOIS STATE PLANE
COORDINATE SYSTEM, NAD83 1986 - WEST ZONE
SURVEYED IN ENGLISH.

PLAT DISTANCES AND STATIONING ARE IN GRID ENGLISH.
TO CONVERT TO GROUND DIVIDE BY GRID FACTOR.
GRID FACTOR = 1.00003150



RIGHT OF WAY PLANS	
ROUTE	F.A.P. 322 (US 51)
SECTION	11-1
PROJECT	
COUNTY	CHRISTIAN
JOB NO.	R-96-008-95
STA	3+00 TO STA 18+00
SCALE	1 = 50'
SHEET NO. 24 OF 24	