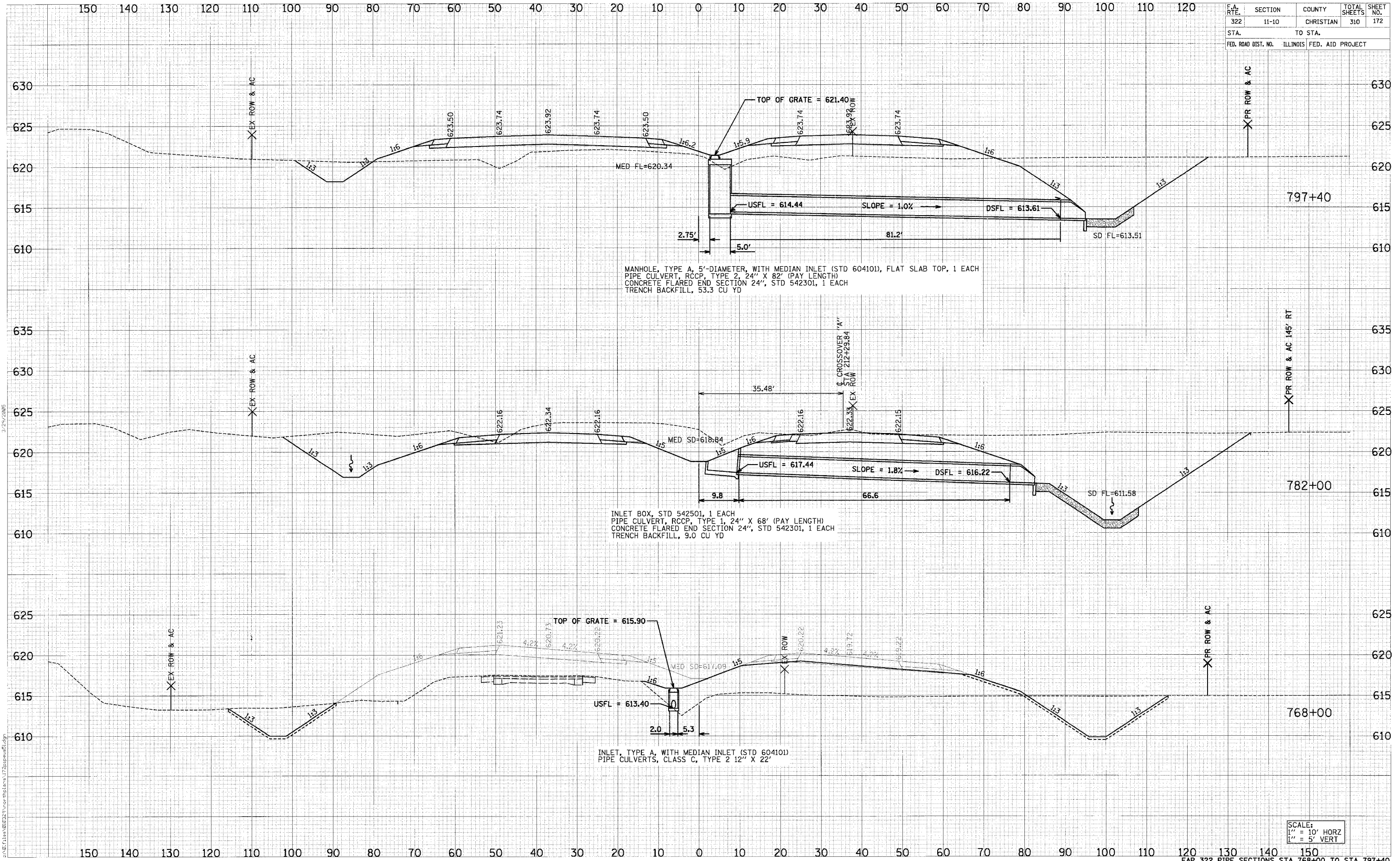


F.A. RTE.	SECTION	COUNTY	TOTAL SHEETS	SHEET NO.
322	11-10	CHRISTIAN	310	172
STA.		TO STA.		
FED. ROAD DIST. NO.		ILLINOIS FED. AID PROJECT		

DATE	BY
DATE	BY
DATE	BY
DATE	BY
DATE	BY

DATE	BY
DATE	BY
DATE	BY
DATE	BY
DATE	BY



MANHOLE, TYPE A, 5'-DIAMETER, WITH MEDIAN INLET (STD 604101), FLAT SLAB TOP, 1 EACH
 PIPE CULVERT, RCCP, TYPE 2, 24" X 82' (PAY LENGTH)
 CONCRETE FLARED END SECTION 24", STD 542301, 1 EACH
 TRENCH BACKFILL, 53.3 CU YD

INLET BOX, STD 542501, 1 EACH
 PIPE CULVERT, RCCP, TYPE 1, 24" X 68' (PAY LENGTH)
 CONCRETE FLARED END SECTION 24", STD 542301, 1 EACH
 TRENCH BACKFILL, 9.0 CU YD

INLET, TYPE A, WITH MEDIAN INLET (STD 604101)
 PIPE CULVERTS, CLASS C, TYPE 2 12" X 22'

SCALE:
 1" = 10' HORIZ
 1" = 5' VERT