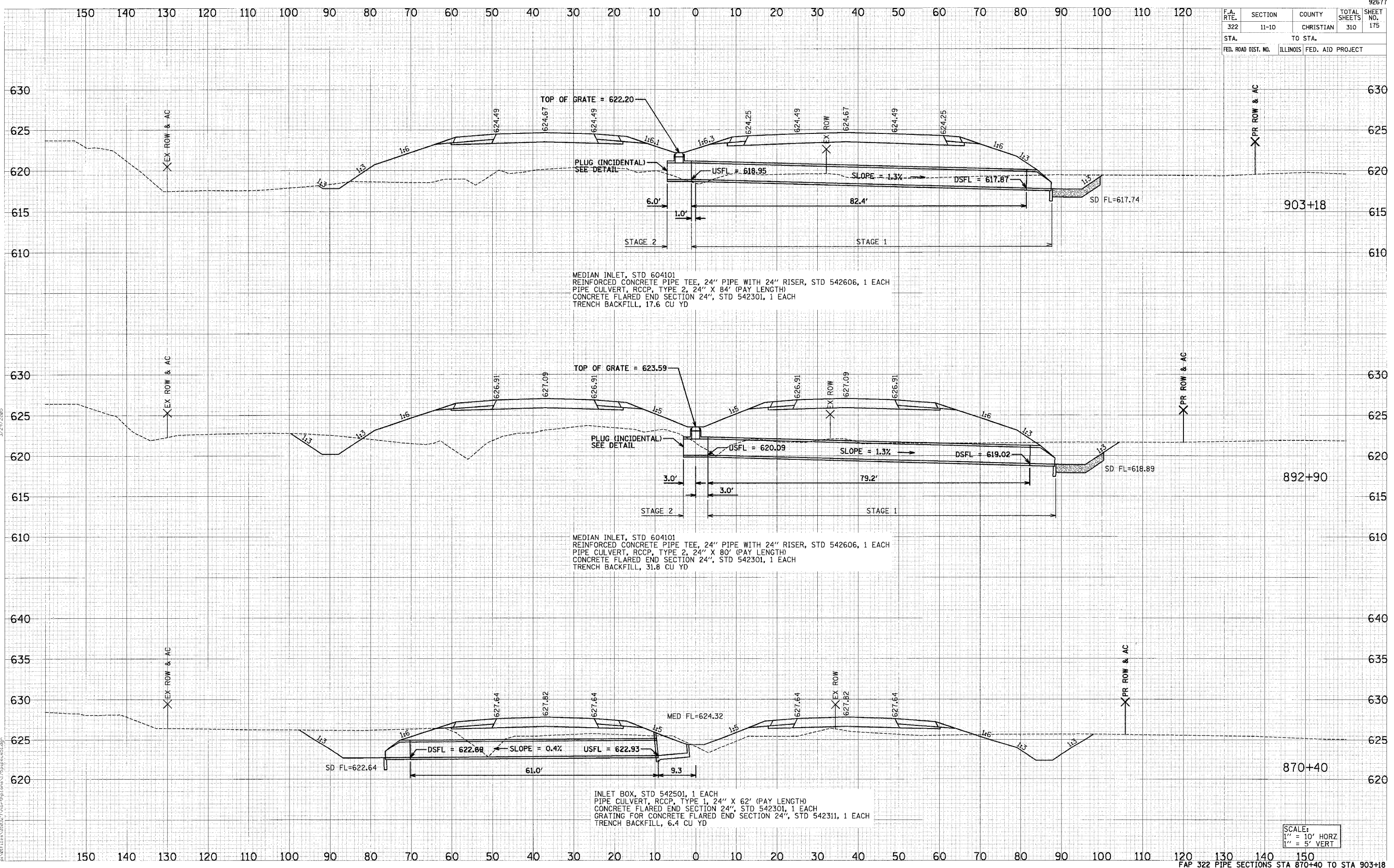


F.A. RTE.	SECTION	COUNTY	TOTAL SHEETS	SHEET NO.
322	11-10	CHRISTIAN	310	175
STA.		TO STA.		
FED. ROAD DIST. NO.		ILLINOIS FED. AID PROJECT		



MEDIAN INLET, STD 604101
 REINFORCED CONCRETE PIPE TEE, 24" PIPE WITH 24" RISER, STD 542606, 1 EACH
 PIPE CULVERT, RCCP, TYPE 2, 24" X 84" (PAY LENGTH)
 CONCRETE FLARED END SECTION 24", STD 542301, 1 EACH
 TRENCH BACKFILL, 17.6 CU YD

MEDIAN INLET, STD 604101
 REINFORCED CONCRETE PIPE TEE, 24" PIPE WITH 24" RISER, STD 542606, 1 EACH
 PIPE CULVERT, RCCP, TYPE 2, 24" X 80" (PAY LENGTH)
 CONCRETE FLARED END SECTION 24", STD 542301, 1 EACH
 TRENCH BACKFILL, 31.8 CU YD

INLET BOX, STD 542501, 1 EACH
 PIPE CULVERT, RCCP, TYPE 1, 24" X 62' (PAY LENGTH)
 CONCRETE FLARED END SECTION 24", STD 542301, 1 EACH
 GRATING FOR CONCRETE FLARED END SECTION 24", STD 542311, 1 EACH
 TRENCH BACKFILL, 6.4 CU YD

SCALE:
 1" = 10' HORZ
 1" = 5' VERT

DATE: _____
 BY: _____
 SUPERVISOR: _____
 CHECKED: _____
 DATE: _____
 BY: _____
 SURVEY: _____
 PLOTTED: _____
 DATE: _____
 BY: _____
 NOTE BOOK: _____
 NO. _____

DATE: _____
 BY: _____
 SUPERVISOR: _____
 CHECKED: _____
 DATE: _____
 BY: _____
 SURVEY: _____
 PLOTTED: _____
 DATE: _____
 BY: _____
 NOTE BOOK: _____
 NO. _____

3/29/2006

p:\0111a\010320\p10a\75\p10a51.dwg