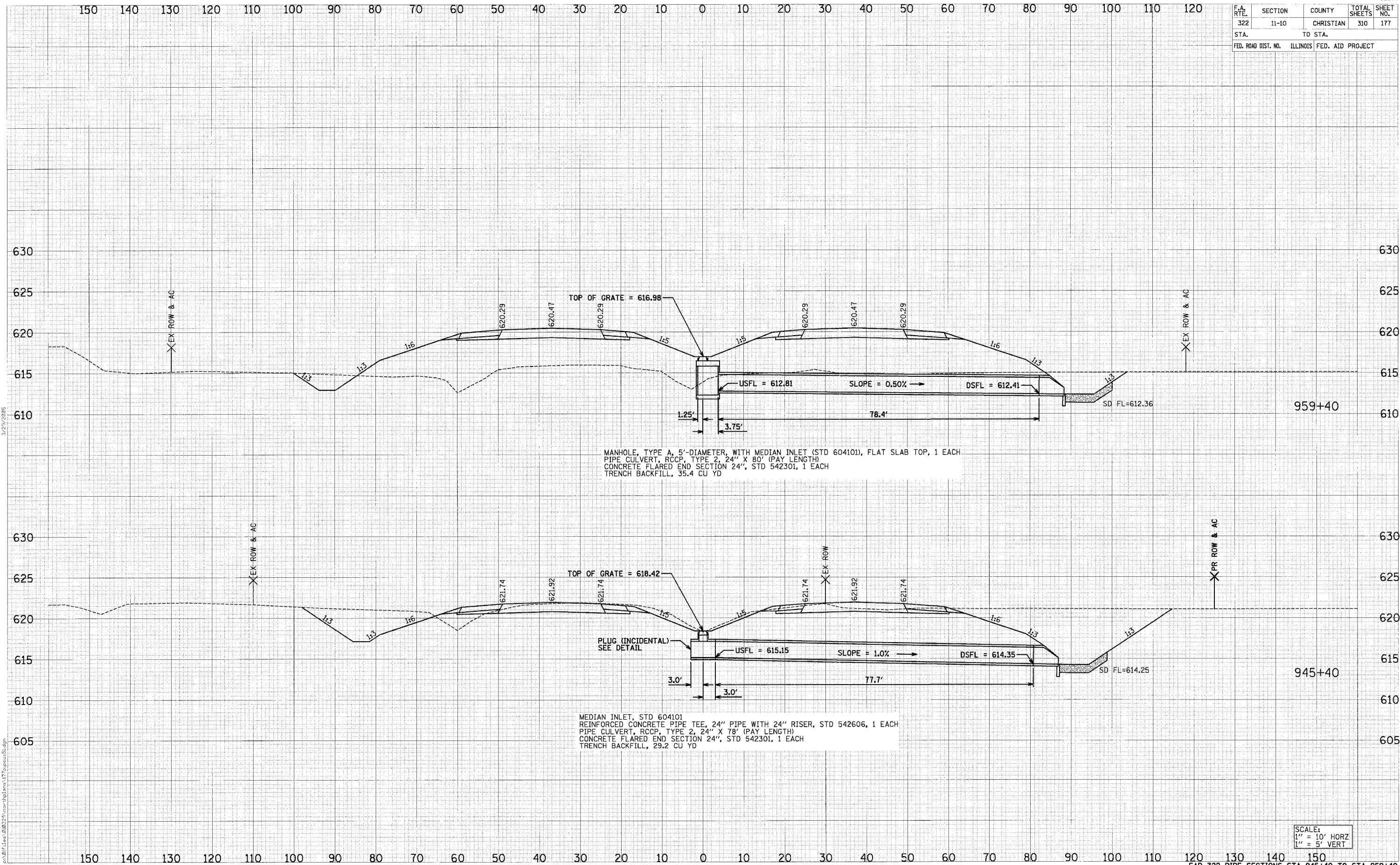


F.A. RTE.	SECTION	COUNTY	TOTAL SHEETS	SHEET NO.
322	11-10	CHRISTIAN	310	177
STA.		TO STA.		
FED. ROAD DIST. NO.		ILLINOIS FED. AID PROJECT		



MANHOLE, TYPE A, 5'-DIAMETER, WITH MEDIAN INLET (STD 604101), FLAT SLAB TOP, 1 EACH
 PIPE CULVERT, RCCP, TYPE 2, 24" X 80" (PAY LENGTH)
 CONCRETE FLARED END SECTION 24", STD 542301, 1 EACH
 TRENCH BACKFILL, 35.4 CU YD

MEDIAN INLET, STD 604101
 REINFORCED CONCRETE PIPE TEE, 24" PIPE WITH 24" RISER, STD 542606, 1 EACH
 PIPE CULVERT, RCCP, TYPE 2, 24" X 78" (PAY LENGTH)
 CONCRETE FLARED END SECTION 24", STD 542301, 1 EACH
 TRENCH BACKFILL, 29.2 CU YD

SCALE:
 1" = 10' HORIZ
 1" = 5' VERT

DATE: _____ BY: _____

FINAL SURVEY NOTE BOOK AREAS CHECKED

DATE: _____ BY: _____

ORIGINAL SURVEY NOTE BOOK AREAS CHECKED

3/27/2005

p:\BTL\11a\080228\user\tblama\177\pipeu15.dgn