

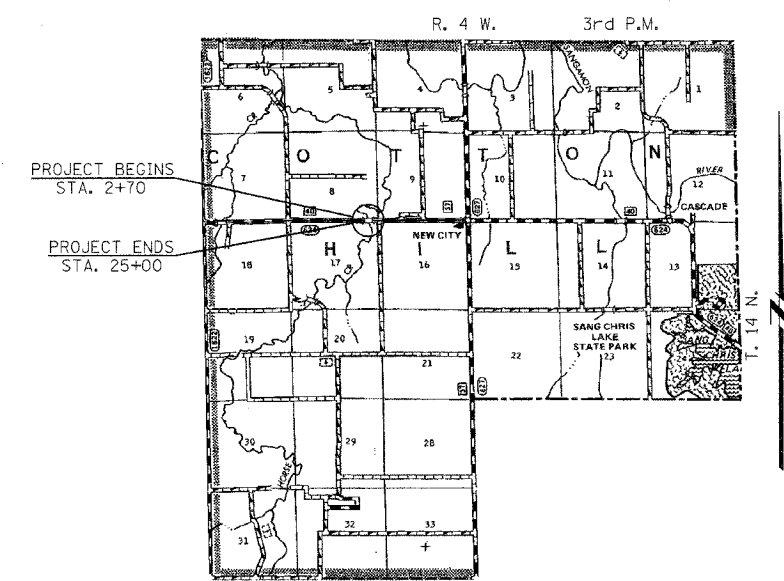
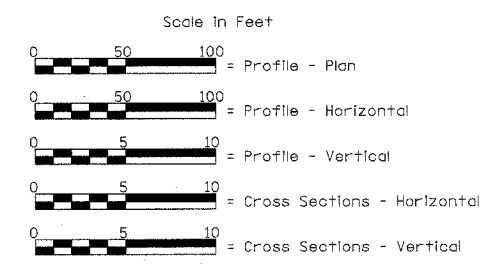
RTE.	SECTION	COUNTY	TOTAL SHEETS	SHEET NO.
C.H. 40	*	SANGAMON	33	1
PROJECT				

• 00-00021-02-BR

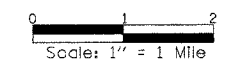
STATE OF ILLINOIS
DEPARTMENT OF TRANSPORTATION
PLANS FOR PROPOSED
HIGHWAY BRIDGE REPLACEMENT
AND REHABILITATION PROGRAM
PROJECT NO. BRS-624(110)
F.A.S. 624 (C.H. 40) OVER HORSE CREEK
SECTION 00-00021-02-BR
SANGAMON COUNTY
C-96-237-04

- INDEX OF SHEETS**
- 1 - TITLE SHEET
 - 2 - SUMMARY OF QUANTITIES & SCHEDULES
 - 3 & 4 - DETAILS & TYPICAL SECTIONS
 - 5 & 6 - PLAN & PROFILE
 - 7 & 8 - GENERAL PLAN & ELEVATION
 - 9 & 10 - TOP OF SLAB ELEVATIONS
 - 11 - SUPERSTRUCTURE
 - 12 & 13 - STRUCTURAL STEEL
 - 14 - BEARING DETAILS
 - 15 - DIAPHRAGM DETAILS
 - 16 - TYPE SM STEEL BRIDGE RAIL
 - 17 - WEST ABUTMENT
 - 18 - EAST ABUTMENT
 - 19 - PIERS
 - 20 - ANCHOR BOLT DETAILS
 - 21 - BAR SPLICER DETAILS
 - 22 & 23 - BORINGS
 - 24 - 33 - CROSS SECTIONS

- STANDARDS**
- STANDARD 280001-02
 - STANDARD 515001-02
 - STANDARD 630001-05
 - STANDARD 630301-03
 - STANDARD 631032-01
 - STANDARD 635006-02
 - STANDARD 702001-05
 - STANDARD BLR 21-6



LOCATION PLAN
Length of Section - 2230.00 Feet = 0.422 Miles



Land Section - 8
Land Quarter Section - S.E.
Design Class: Major Collector (Non-Urban)
ADT = 1200 (1998)
1560 (2021)
50 M.P.H. Design Speed

EXISTING STRUCTURE: FOUR SPAN REINFORCED CONCRETE DECK ON STEEL STRINGERS. CONCRETE PILE BENT ABUTMENTS AND PIERS. ±162'-9" BK.-BK. ABUTMENTS, ±24'-4" OUT.-OUT. DECK, CONCRETE RAILINGS. 45° SKEW RT. FORWARD. EXISTING STRUCTURE NO. 084-3015

PROPOSED STRUCTURE: THREE SPAN REINFORCED CONCRETE DECK ON STEEL "I"-BEAM (36") ON INTEGRAL CONCRETE ABUTMENTS AND SOLID CONCRETE PIERS. 310'-0" BK.-BK. ABUTMENTS, 40'-0" CLEAR DECK WIDTH WITH CONCRETE PARAPETS. 30° SKEW RT. FORWARD. PROPOSED STRUCTURE NO. 084-3415

FILE NAME: SCCH015 (REV. 3/14/05)

TOLL FREE
"JOINT UTILITY LOCATION INFORMATION FOR EXCAVATORS"
(J.U.L.I.E.) TELEPHONE NUMBER
1-800-892-0123

CONTRACT NO. 93392



Christopher P. Kohlman 3/15/05
Expiration: 11/30/05

STATE OF ILLINOIS
DEPARTMENT OF TRANSPORTATION

APPROVED: *3-14-2005*
Christopher P. Kohlman
LICENSED PROFESSIONAL ENGINEER

PASSED: *3-31-2005*
Tommy Ford
DISTRICT ENGINEER OF LOCAL ROADS & STREETS

PASSED: *3-31-2005*
W.P. Ferguson
DISTRICT CONSTRUCTION ENGINEER

APPROVED: *4-01-2005*
Christine M. Reed
DEPUTY DIRECTOR OF HIGHWAYS
REGION FOUR ENGINEER