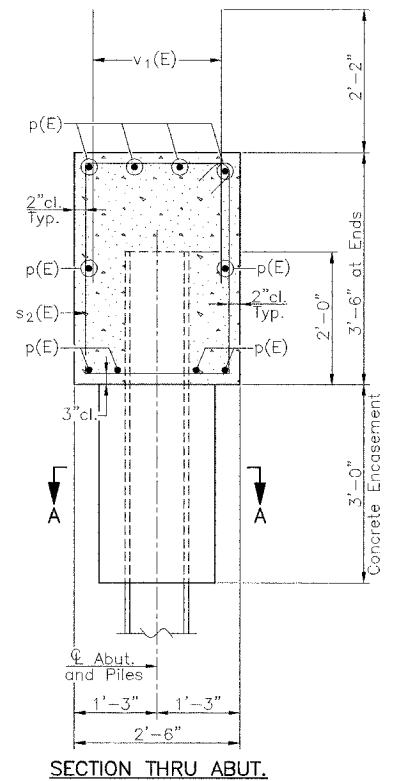
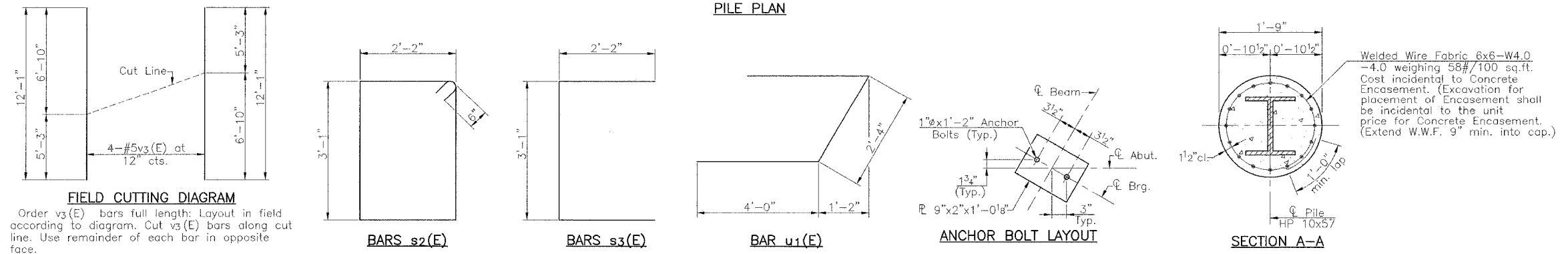
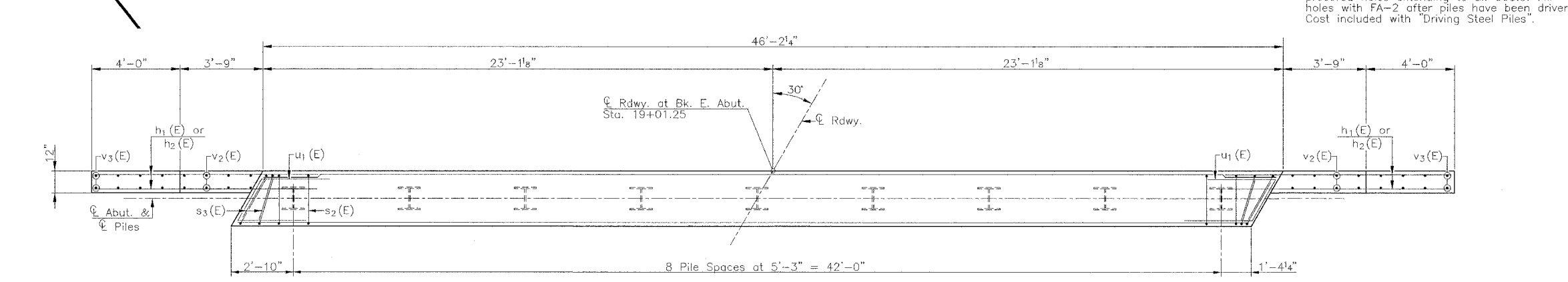
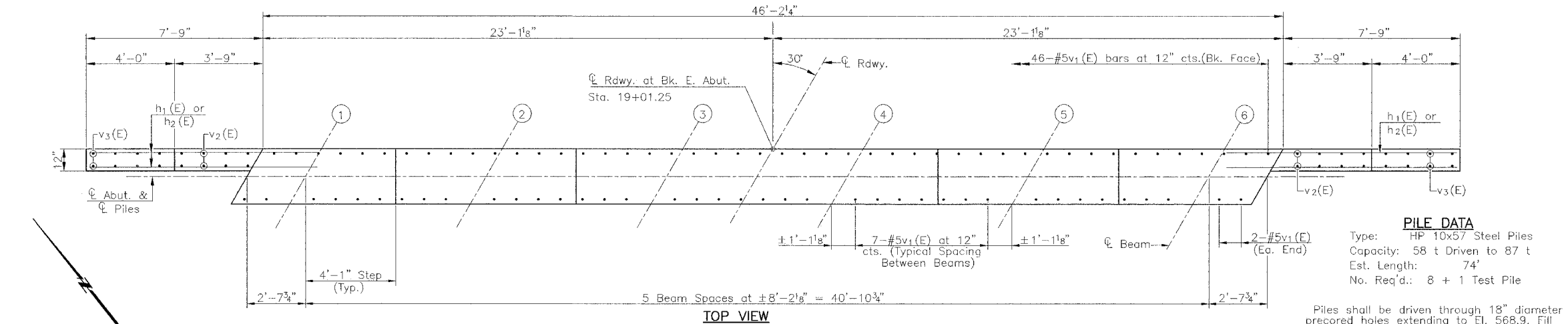
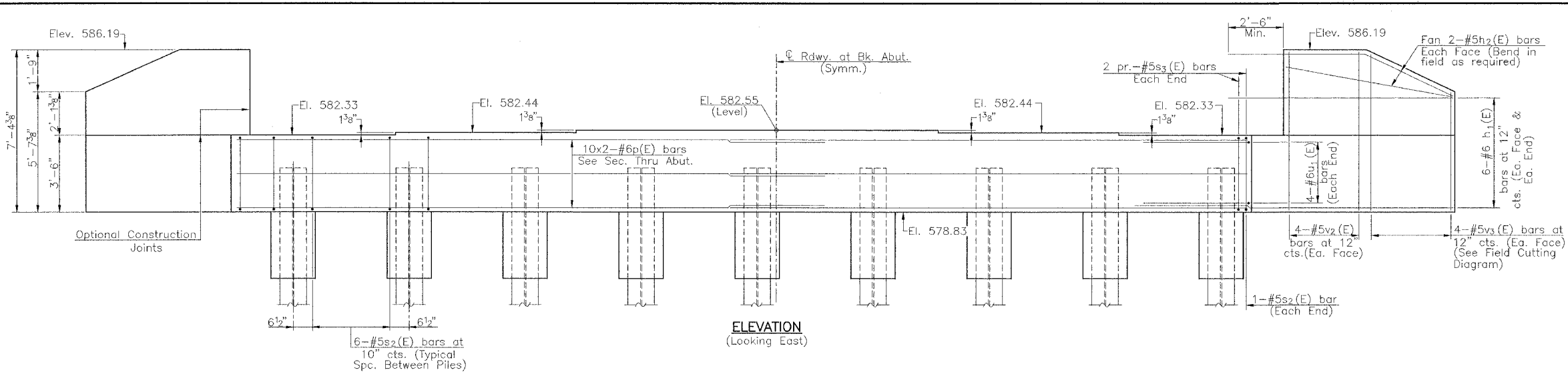


RTE.	SECTION	COUNTY	TOTAL SHEETS	SHEET NO.
C.H. 40	*	SANGAMON	33	18

PROJECT \* 00-00021-02-BR



EAST ABUTMENT BILL OF MATERIAL

BAR	NO.	SIZE	LENGTH	SHAPE
h1(E)	24	#6	10'-8"	—
h2(E)	8	#5	7'-6"	—
p(E)	20	#6	24'-3"	—
s2(E)	50	#5	11'-6"	□
s3(E)	8	#5	7'-5"	□
u1(E)	8	#6	10'-4"	▤
v1(E)	85	#5	5'-0"	—
v2(E)	16	#5	6'-11"	—
v3(E)	8	#5	12'-1"	—
Concrete Structures				Cu. Yd. 17.5
Reinforcement Bars(Epoxy Coated)Pound				2620
Furnishing Steel Piles Hp 10x57				Foot 592
Driving Steel Piles				Foot 592
Test Pile, Steel HP 10x57				Each 1
Concrete Encasement				Cu. Yd. 2.4

Notes:  
 Space Reinforcement in top of footing to miss anchor bolts.  
 Pour Steps monolithically with caps.  
 Reinforcement bars designated (E) shall be epoxy coated.  
 All exposed edges shall have a standard 3/4" chamfer.  
 Volume of concrete wingwalls above bonded construction joint to be included in "Concrete Superstructures". See Sheet No. 11 of 33.  
 See Sheet No. 20 of 33 for anchor bolt installation.  
 Bars indicated thus 10x2-#6 etc. indicates 10 lines of bars with 2 lengths per line.

EAST ABUTMENT  
 C.H. 40 OVER HORSE CREEK  
 SECTION 00-00021-02-BR  
 SANGAMON COUNTY