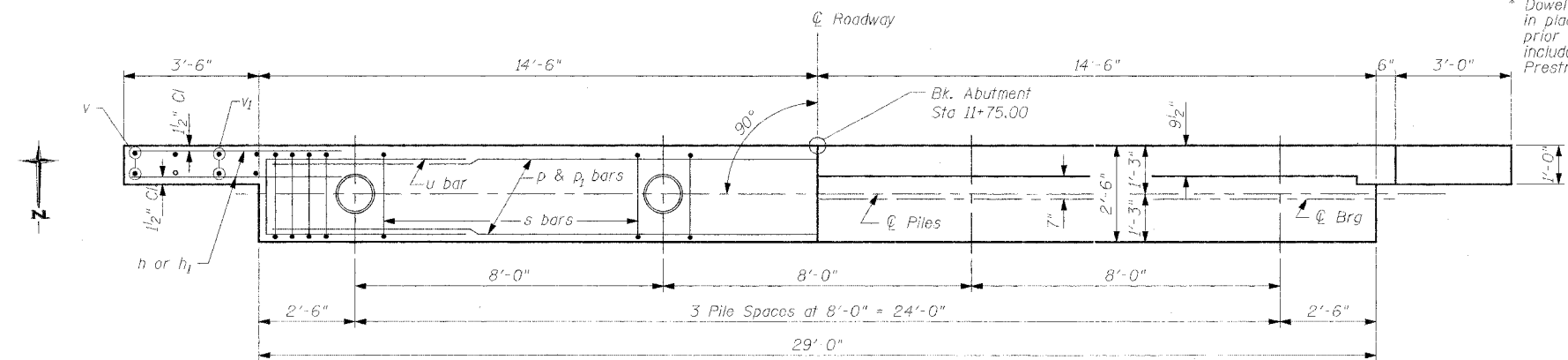
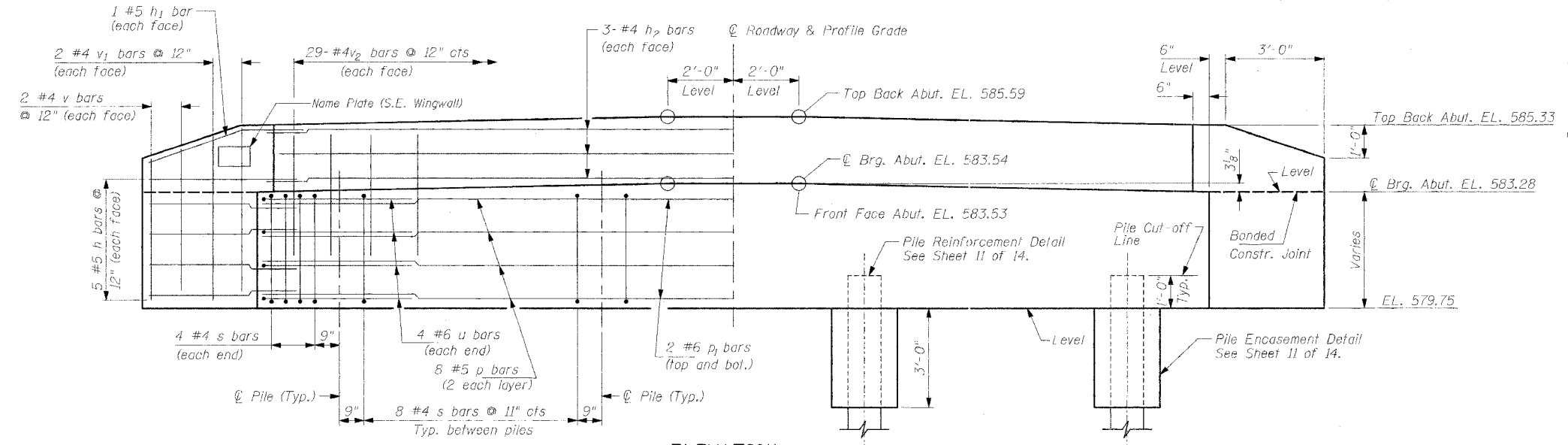


ROUTE NO.	SECTION	COUNTY	TOTAL SHEETS	SHEET NO.
MASSEY LANE	*	MORGAN	15	8
FED. RD. DIST. NO.		ILLINOIS		FED. AID PROJECT

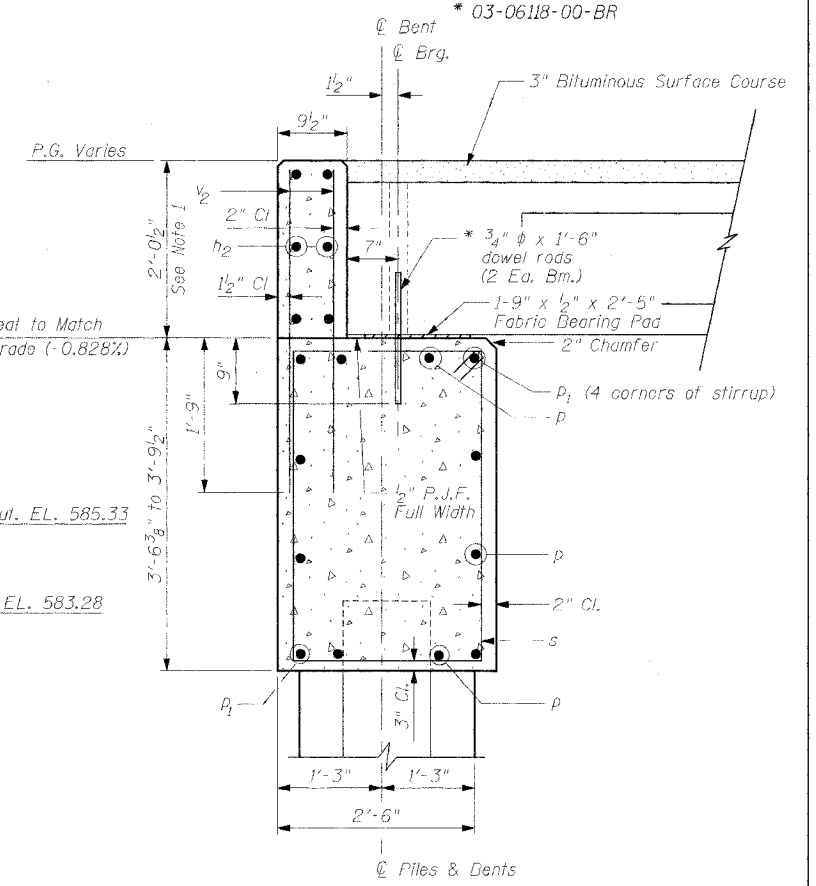


PLAN

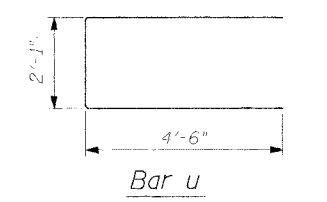


ELEVATION

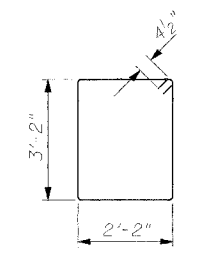
* Dowel Rods shall be grouted after beams are in place and allowed to cure (Min. 24 hrs.) prior to grouting the shear keys. Cost shall be included in the cost of the unit price for Precast Prestressed Concrete Deck Beams (21" Depth).



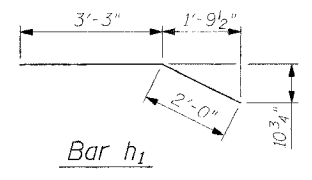
SECTION THRU ABUTMENT



Bar u



Bar s



Bar h1

PILE DATA

Type: Metal Shell 12" Dia.
Capacity: 32.5 Ton
Est. Length: 52'-0"
Num Required: 4

DESIGN STRESSES

f'c = 3500 psi
fy = 60000 psi

QUANTITIES FOR ONE ABUTMENT

Concrete Structures	12.9 Cu Yd
Reinforcement Bars	1,210 Pound

Furn. Metal Shell Piles, 12" Dia.	208 Foot
Driving and Filling Shells	208 Foot
Name Plates	1 Each

BAR LIST FOR ONE ABUTMENT

Bar	No.	Size	Length	Shape
h	20	#5	5'-0"	—
h1	4	#5	5'-3"	—
h2	6	#4	28'-6"	—
p	8	#5	28'-6"	—
p1	4	#6	28'-6"	—
s	32	#4	11'-5"	□
u	8	#6	11'-1"	□
v	8	#4	4'-0"	—
v1	8	#4	4'-8"	—
v2	58	#4	3'-8"	—

NOTES

- The backwall and the portion of the wingwalls above the bonded construction joint shall be cast against the in place beam.
- Reinforcement bars shall conform to AASHTO M-31, M-42 or M-53, Grade 60.

DRAWN BY	M/C
CHECKED BY	LEL
APPROVED BY	REG
DATE	MARCH, 2005
REVISIONS	
DATE	BY
FIELD BOOK:	

SOUTH ABUTMENT
MASSEY LANE OVER SANDY CREEK
SEC 03-06118-00-BR STA. 12+25.00

MORGAN COUNTY, ILLINOIS

Benton & Associates, Inc.
Consulting Engineers / Land Surveyors
1970 West Lafayette Avenue Jacksonville, Illinois 62650
Phone : 217-245-4146 Fax : 217-245-4149
IL Design Firm Registration No. 184-000852

SCALE: N.T.S. JOB NO. 02E1314 SHEET 8 OF 15