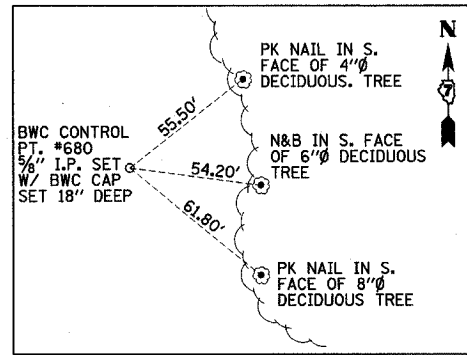
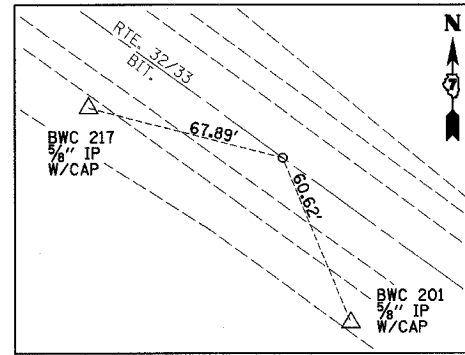


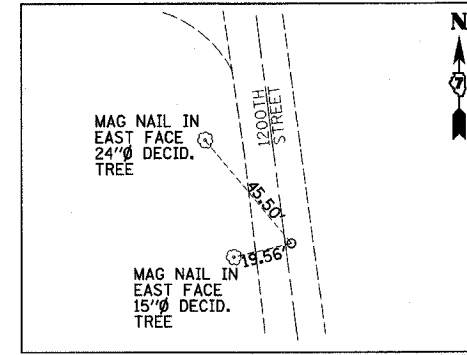
PC OF PROP. 5 STA. 988+35.24
(MAG NAIL)



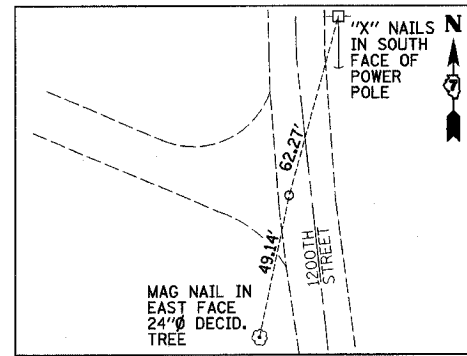
P.O.T. PROP. 5 STA. 1017+37.29 OFFSET 377.64' LT
(MAG NAIL)



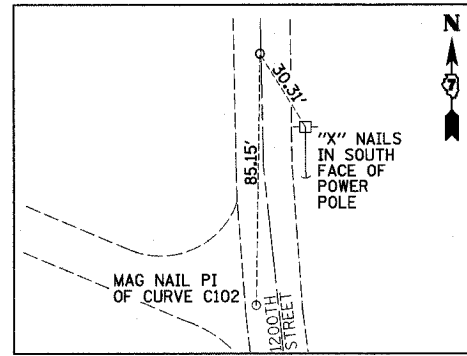
CL RELOCATED 1200TH STREET STA. 200+00.00 =
CL RTE. 32/33 STA. 1015+03.93
(MAG NAIL)



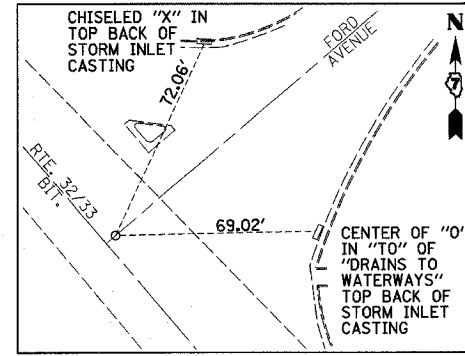
PC PROP. CURVE C102 (RELOCATED 1200TH STREET)
STA. 210+96.27
(MAG NAIL)



PI PROP. CURVE C102 (RELOCATED 1200TH STREET)
STA. 211+81.42
(MAG NAIL)



PT PROP. CURVE C102 (RELOCATED 1200TH STREET)
STA. 212+65.74
(MAG NAIL)



CL PROP. FORD AVE. (SOUTH) STA. 185+00.00 =
CL RTE. 32/33 STA. 42+30.72
(MAG NAIL & FLAGGING)

BM #53
25' RT. STA. 940+57, ELEV. 608.01
CHISELED "O" SOUTHEAST CORNER
CONCRETE HEADWALL

BM #6
30' RT. STA. 951+33, ELEV. 606.30
CHISELED "O" SOUTH END CONCRETE BOX CULVERT

BM #7
36' RT. STA. 971+17, ELEV. 606.61
RR SPIKE IN POWER POLE

BM #55
45' RT. STA. 974+88, ELEV. 605.86
PAINT MARK ON NORTH CAP BOLT OF
FIRE HYDRANT AT LYNN ACRES ROAD AND
IL RTE 32/33

BM #8
78' RT. STA. 981+01, ELEV. 600.57
RR SPIKE IN POWER POLE

BM #9
121' RT. STA. 991+87, ELEV. 558.84
CHISELED "X" IN NORTH BOLT OF FIRE
HYDRANT AT WABASH RIVERHILLS AND
IL RTE 32/33

BM #250078
22' RT. STA. 1010+31, ELEV. 543.53
CHISELED "O" ABOVE BRIDGE NAME PLATE

BM 250077
22' RT. STA. 1017+17, ELEV. 543.66
CHISELED "O" ABOVE BRIDGE NAME PLATE

BM #60
79' RT. STA. 1024+86, ELEV. 548.63
CHISELED "X" ON NORTH FLANGE BOLT
OF FIRE HYDRANT

BM #12
18' RT. STA. 1030+71, ELEV. 570.76
CHISELED "O" BACK OF GUTTER AT
SOUTHWEST CORNER OF DROP INLET

BM #59
56' LT. STA. 47+13, ELEV. 598.48
CHISELED "O" SOUTH EDGE OF CONCRETE
PARKING LOT OF EFFINGHAM PLAZA
10.5' SOUTH OF PLAZA SIGN

REVISIONS	
NAME	DATE

ILLINOIS DEPARTMENT OF TRANSPORTATION

CONTROL TIES
AND BENCHMARKS
SHEET 1 OF 1

DRAWN BY NJV
CHECKED BY TLS

DATE 5/2/02