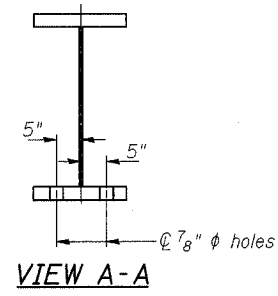
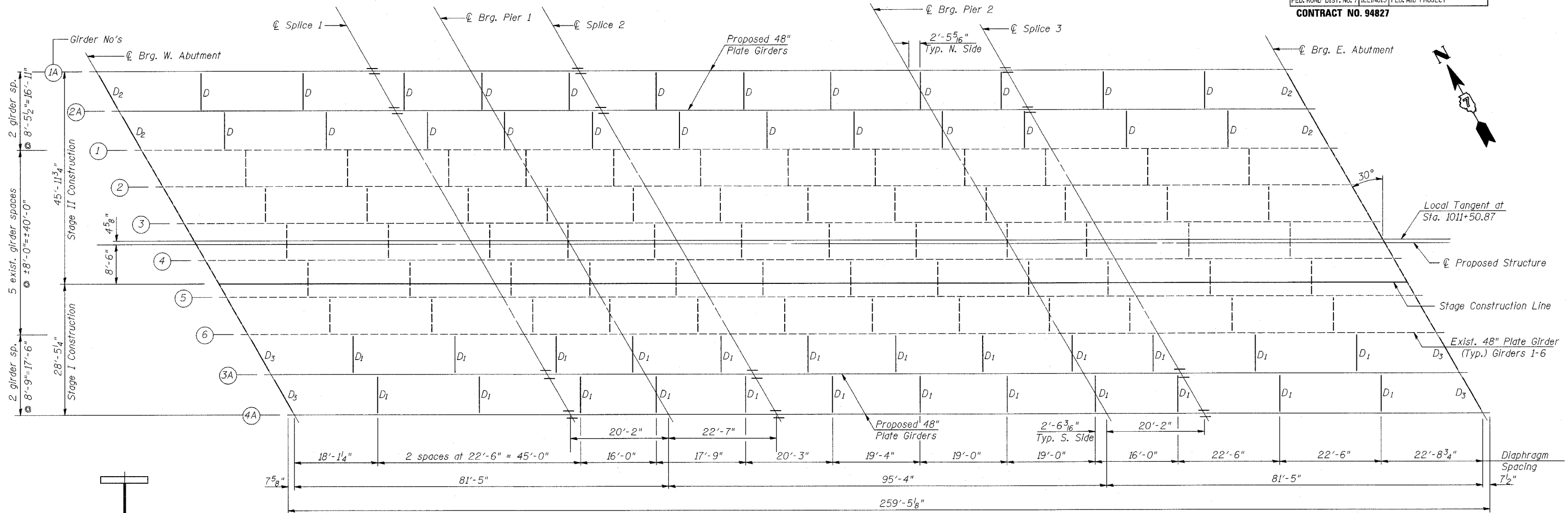


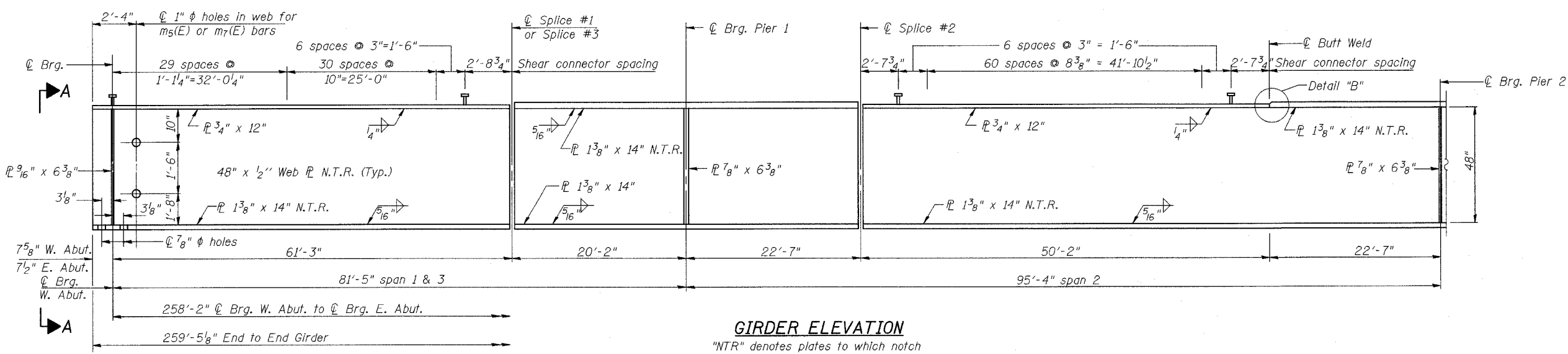
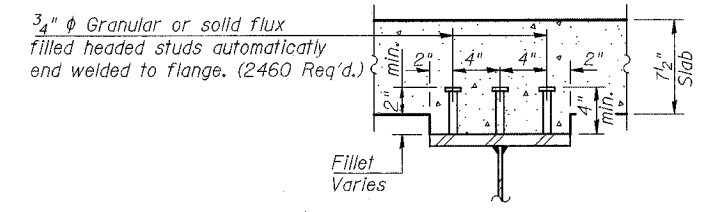
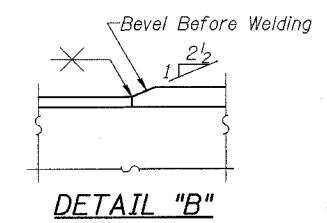
ROUTE NO.	SECTION	COUNTY	TOTAL SHEETS	SHEET NO.	SHEET NO. 12 29 SHEETS
F.A.P. RTE. 774	107BY	EFFINGHAM	273	238	
FED. ROAD DIST. NO. 7 ILLINOIS FED. AID PROJECT-					

CONTRACT NO. 94827



**FRAMING PLAN**

The existing steel diaphragms at the abutments shall be cleaned and left in place. Cost of cleaning is included with Concrete Superstructure.



**GIRDER ELEVATION**

"NTR" denotes plates to which notch toughness requirements are applicable.

SHEET TITLE <b>STRUCTURAL STEEL</b>		PROJECT NO. 02017
PROJECT IL RTE. 32/33 OVER LITTLE WABASH RIVER F.A.P. RTE. 774 SECTION 107BY EFFINGHAM COUNTY STATION 1011+50.17 STRUCTURE NO. 025-0078		SCALE DATE DRAWN BY TFC
<b>COOMBE-BLOXDORF P.C.</b> Engineers/Land Surveyors Springfield, Illinois Design Firm License No. 184-002708		CHECKED BY GJB/MCB DRAWING NO. <b>12</b> OF 29 SHTS