

3/31/2005
 c:\projects\94905\d\042014
 REV: CS
 1 2 3 4 5 6 7 8 9
 10 11 12 13 14 15 16 17 18
 19 20 21 22 23 24 25 26 27
 28 29 30 31 32 33 34 35 36
 37 38 39 40 41 42 43 44 45
 46 47 48 49 50 51 52 53 54
 55 56 57 58 59 60 61 62 63

94905

FAI Rte.	SECTION	COUNTY	TOTAL SHEETS	SHEET NO.
64	(41-7)RS-1	JEFFERSON	48	1
FED. ROAD DIST. NO. 7		ILLINOIS	FED. AID PROJECT NO.	

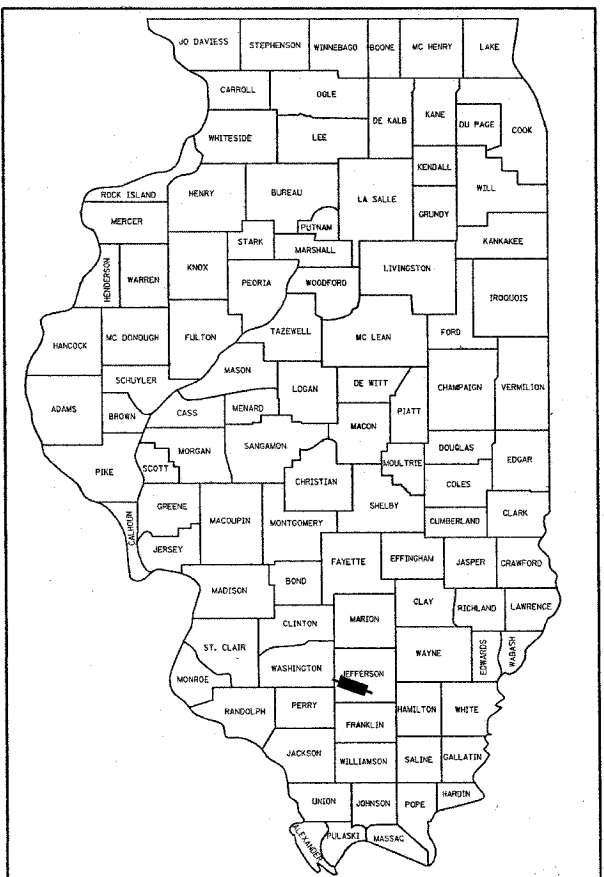
STATE OF ILLINOIS
 DEPARTMENT OF TRANSPORTATION
 DIVISION OF HIGHWAYS

**PROPOSED
 HIGHWAY PLANS**

FAI ROUTE 64 (I-64)
 SECTION (41-7)RS-1
 PROJECT NO: IM-064-3(082)065
 JEFFERSON COUNTY

FOR INDEX OF SHEETS, SEE SHEET NO. 2

D-97-042-01

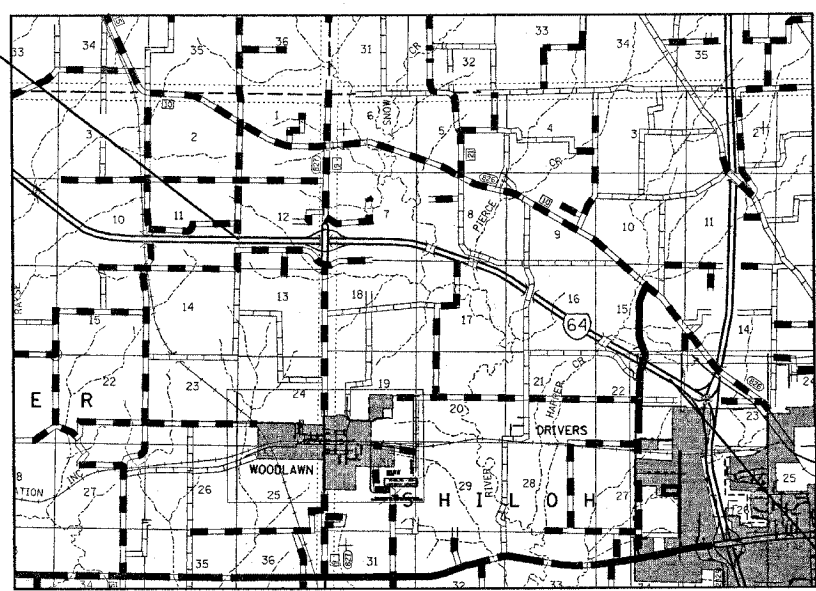


LOCATION OF SECTION INDICATED THUS: - ■ -

C-97-028-05

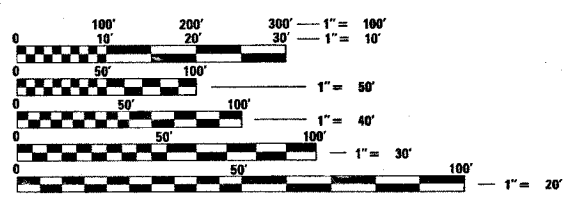
ADT 2004 = 23,200

PROJECT BEGINS
 STA. 2085 + 70.47



LOCATION MAP

PROJECT ENDS
 STA. 2362 + 11.77



FULL SIZE PLANS HAVE BEEN PREPARED USING STANDARD ENGINEERING SCALES. REDUCED SIZED PLANS WILL NOT CONFORM TO STANDARD SCALES. IN MAKING MEASUREMENTS ON REDUCED PLANS, THE ABOVE SCALES MAY BE USED.

J.U.L.I.E.
 JOINT UTILITY LOCATION INFORMATION FOR EXCAVATION
 1-800-892-0123

STATE OF ILLINOIS
 DEPARTMENT OF TRANSPORTATION
 DIVISION OF HIGHWAYS

SUBMITTED April 1 2005

Christopher M. Reed
 DEPUTY DIRECTOR OF HIGHWAYS, REGION ENGINEER

May 13, 2005
Mike Hene
 ENGINEER OF DESIGN AND ENVIRONMENT

May 13, 2005
Victor Modest
 DIRECTOR OF HIGHWAYS, CHIEF ENGINEER

**PRINTED BY THE AUTHORITY
 OF THE STATE OF ILLINOIS**

PROJECT ENGINEER : BILL STANLEY
 SQUAD LEADER : MYRA OLTMAN
 DESIGNER : DOUG HOLLAND
 TELEPHONE : 217/342-3951 EX 314

CONTRACT NO. 94905

TOWNSHIP : CASNER T25 R1E SHILOH T25 R2E

GROSS LENGTH = 27,641.3 FEET = 5.24 MILES
 NET LENGTH = 27,477.3 FEET = 5.20 MILES