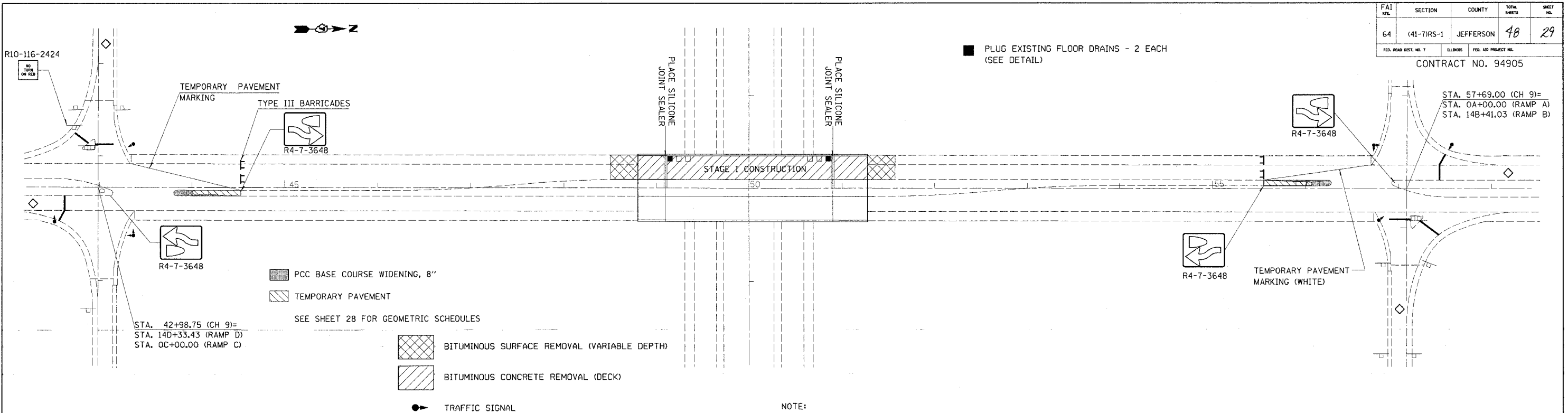


teasleyck
3/31/2005
c:\projects\94905d\04201pa.dgn
STG1-69

FAI RTL	SECTION	COUNTY	TOTAL SHEETS	SHEET NO.
64	(41-71RS-1	JEFFERSON	48	29
FED. ROAD DIST. NO. 7		ILLINOIS	FED. AID PROJECT NO.	
CONTRACT NO. 94905				



TRAFFIC CONTROL AND PROTECTION, STANDARD 701316 (SPECIAL) 1.0 EACH
TEMPORARY BRIDGE TRAFFIC SIGNALS, SPECIAL 1.0 EACH

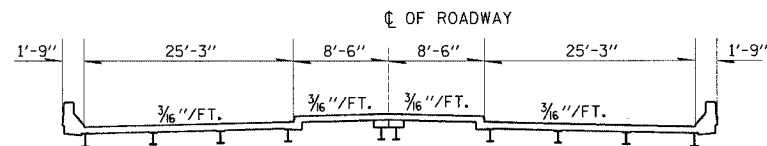
NOTE:

TWO-FACE VERTICAL PANELS SHALL BE PLACED ALONG THE EDGE OF SHOULDER BETWEEN THE RAMPS AT 50-FOOT CENTERS.

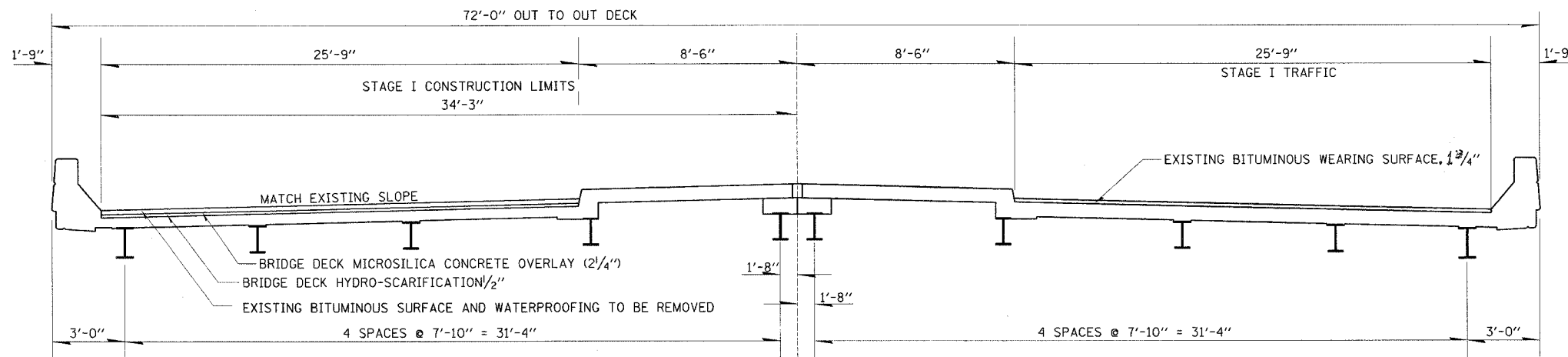
THE GEOMETRIC IMPROVEMENTS TO THE RAMPS AS SHOWN ELSEWHERE IN THESE PLANS SHALL NOT BE CONSTRUCTED UNTIL THE COMPLETION OF BOTH STAGES OF THE BRIDGE REPAIR OPERATIONS.

USE THESE DETAILS IN CONJUNCTION WITH STANDARD 701316. DETAILS SHOWN ON STANDARD 701316 HAVE BEEN OMITTED FROM THIS SHEET FOR CLARITY. NO TEMPORARY CONCRETE BARRIERS WILL BE REQUIRED. THE SIGNING IN ADVANCE OF THE STOP BARS SHALL BE REQUIRED. THE ADVANCE DETECTOR LOOPS ON THE RAMPS SHALL BE PLACED APPROXIMATELY 100 FEET IN ADVANCE OF THE STOP BAR. NO NEAR LOOPS WILL BE REQUIRED.

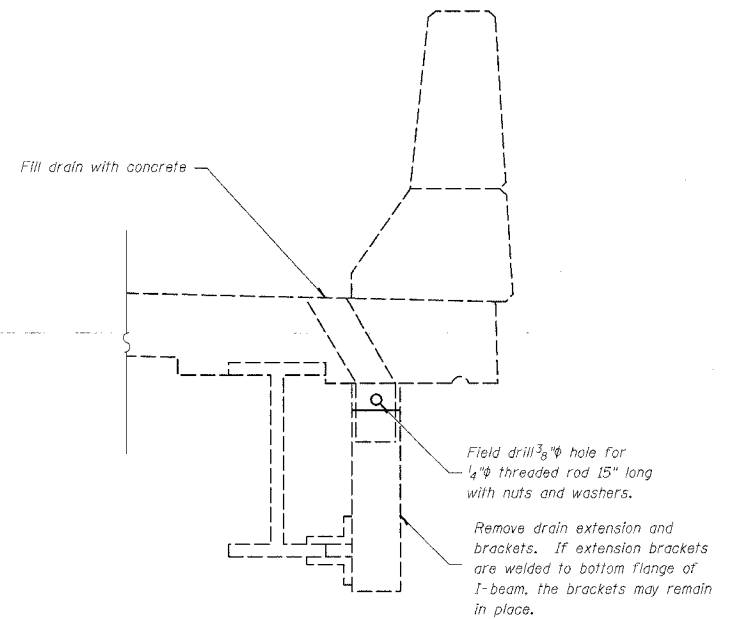
THE EXISTING CONCRETE MEDIAN SURFACE AND CURB AND GUTTER SHALL BE REMOVED TO THE LIMITS AS SHOWN ON THE PLANS PRIOR TO THE INSTALLATION OF THE TRAFFIC CONTROL. THIS AREA SHALL BE FILLED WITH PCC BASE COURSE WIDENING 8" AND TEMPORARY PAVEMENT AS SHOWN ABOVE, CONSTRUCTED LEVEL WITH THE ADJACENT PAVEMENT. AT THE CONCLUSION OF THE BRIDGE DECK REPAIR OPERATIONS THE TEMPORARY PAVEMENT SHALL BE REMOVED AND REPLACED WITH CONCRETE CURB AND GUTTER AND CONCRETE MEDIAN SURFACE CONSTRUCTED TO THE LIMITS AS SHOWN ON THE PLANS.



SLOPE OF ORIGINAL DECK



STAGE I CONSTRUCTION
SN 041-0069 LOOKING NORTH



PLUG EXISTING DECK DRAIN
(QUANTITY = 4 EACH)
SEE LOCATIONS ABOVE AND FOLLOWING PAGE

REVISIONS	
NAME	DATE

ILLINOIS DEPARTMENT OF TRANSPORTATION

STAGE I
CONSTRUCTION DETAILS
SN 041-0069

SCALE: VERT. DRAWN BY
 HORIZ. CHECKED BY
DATE