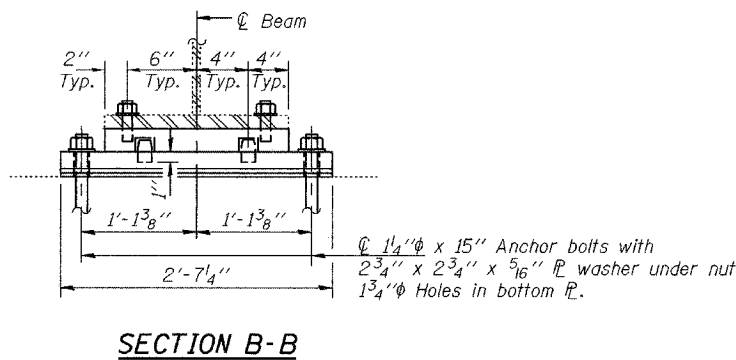
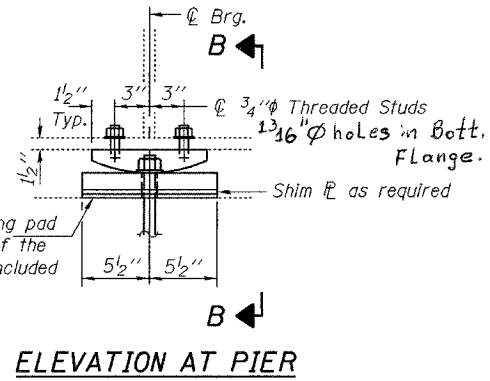
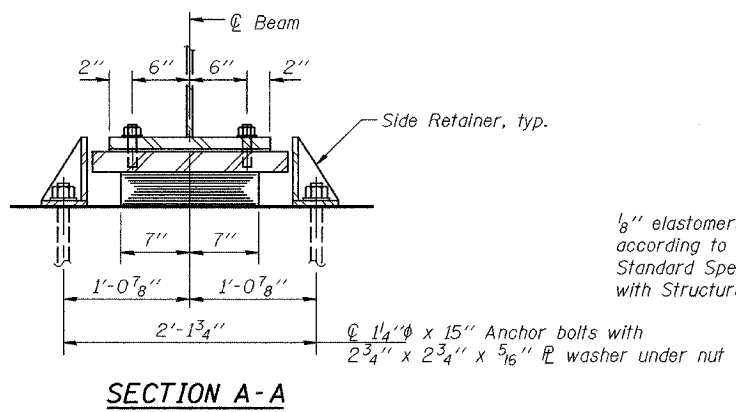
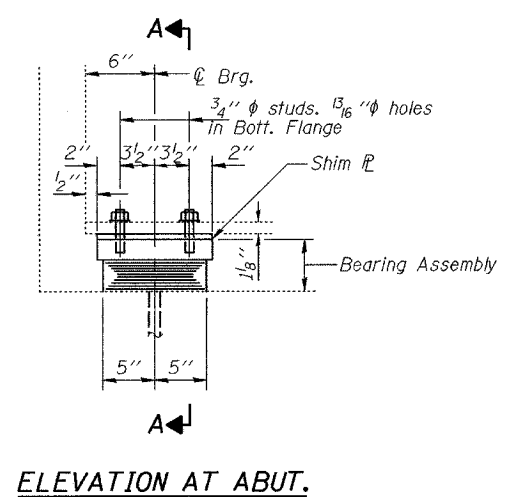


STATE OF ILLINOIS  
DEPARTMENT OF TRANSPORTATION

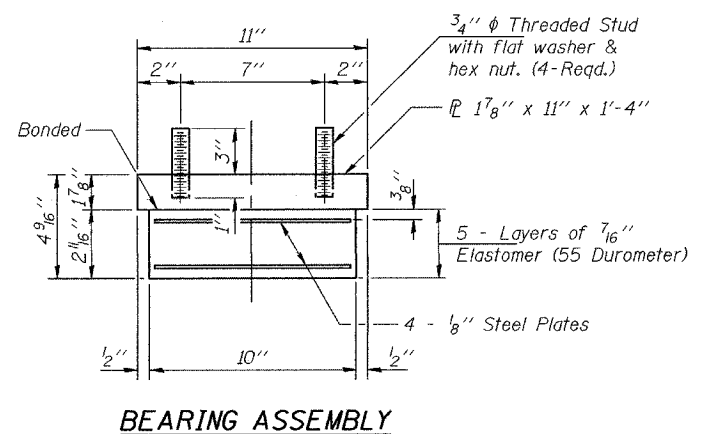
ROUTE NO.	SECTION	COUNTY	TOTAL SHEETS	SHEET NO.
		JEFFERSON	48	35
FED. ROAD DIST. NO. 7	ILLINOIS	FED. AID PROJECT		

SHEET NO. 2  
5 SHEETS

Contract No. 94905



**TYPE I ELASTOMERIC EXP. BRG.**

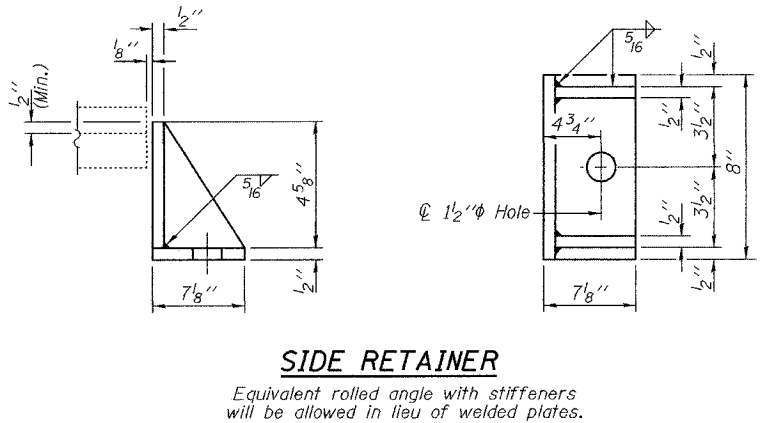
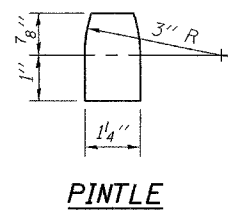
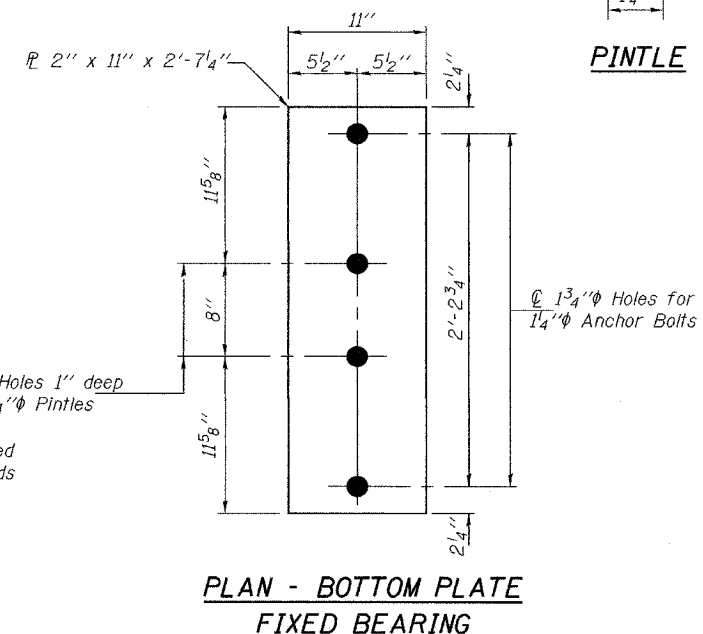
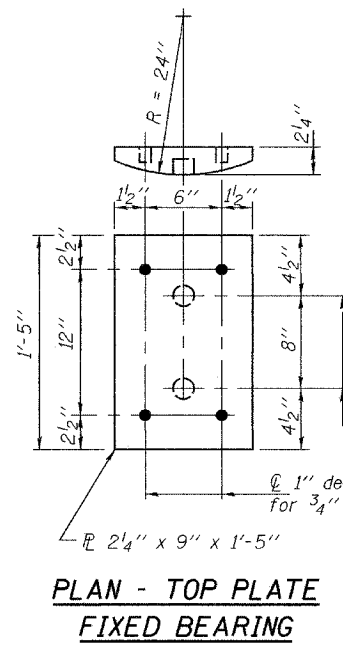


Note:  
Shim plates shall not be placed under Bearing Assembly.

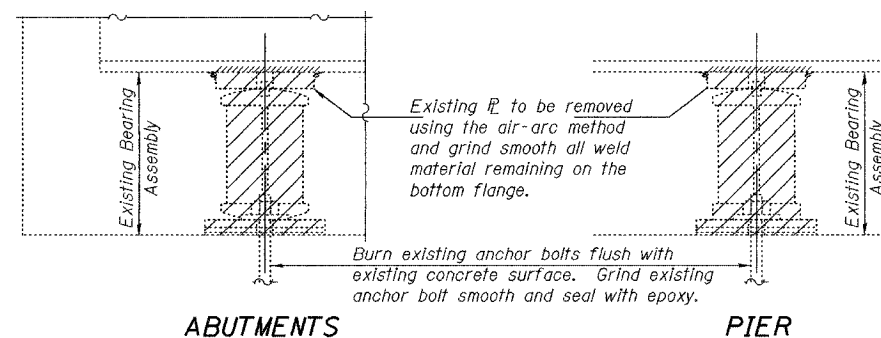
**BEAM REACTIONS**

	Abutments	Pier
R <sub>0</sub>	(K) 47.4	164.7
R <sub>1</sub>	(K) 49.8	72.4
Imp.	(K) 11.6	16.8
R (Total)	(K) 108.8	253.9

Notes:  
Diaphragm removal and reinstallation may be required to facilitate drilling holes. Cost included with Furnishing and Erecting Structural Steel.  
New side retainers, shim plates, connection bolts, and anchor bolts are included with Furnishing and Erecting Structural Steel.  
See Sheet 3 of 5 for Anchor Bolt installation.  
Prior to ordering any material, the Contractor shall verify in the field all bearing height and shim thickness dimensions.  
Min. jack capacity = 60 Tons at abutments.  
Min. jack capacity = 155 Tons at pier.



Equivalent rolled angle with stiffeners will be allowed in lieu of welded plates.



**BILL OF MATERIAL**

Item	Unit	Total
Elastomeric Bearing Assembly Type I	Each	20
Jacking and Cribbing	LS	1
Furnishing and Erecting Structural Steel	Pound	4170

DESIGNED	ATH
CHECKED	VHV
DRAWN	baliva
CHECKED	ATH VHV

APRIL 13, 2005  
EXAMINED John A. Morris  
ENGINEER OF STRUCTURAL SERVICES  
PASSED Ralph E. Anderson  
ENGINEER OF BRIDGES AND STRUCTURES

**REPAIR DETAILS  
CH 9 OVER FAI 64  
JEFFERSON COUNTY  
SN 041-0069**