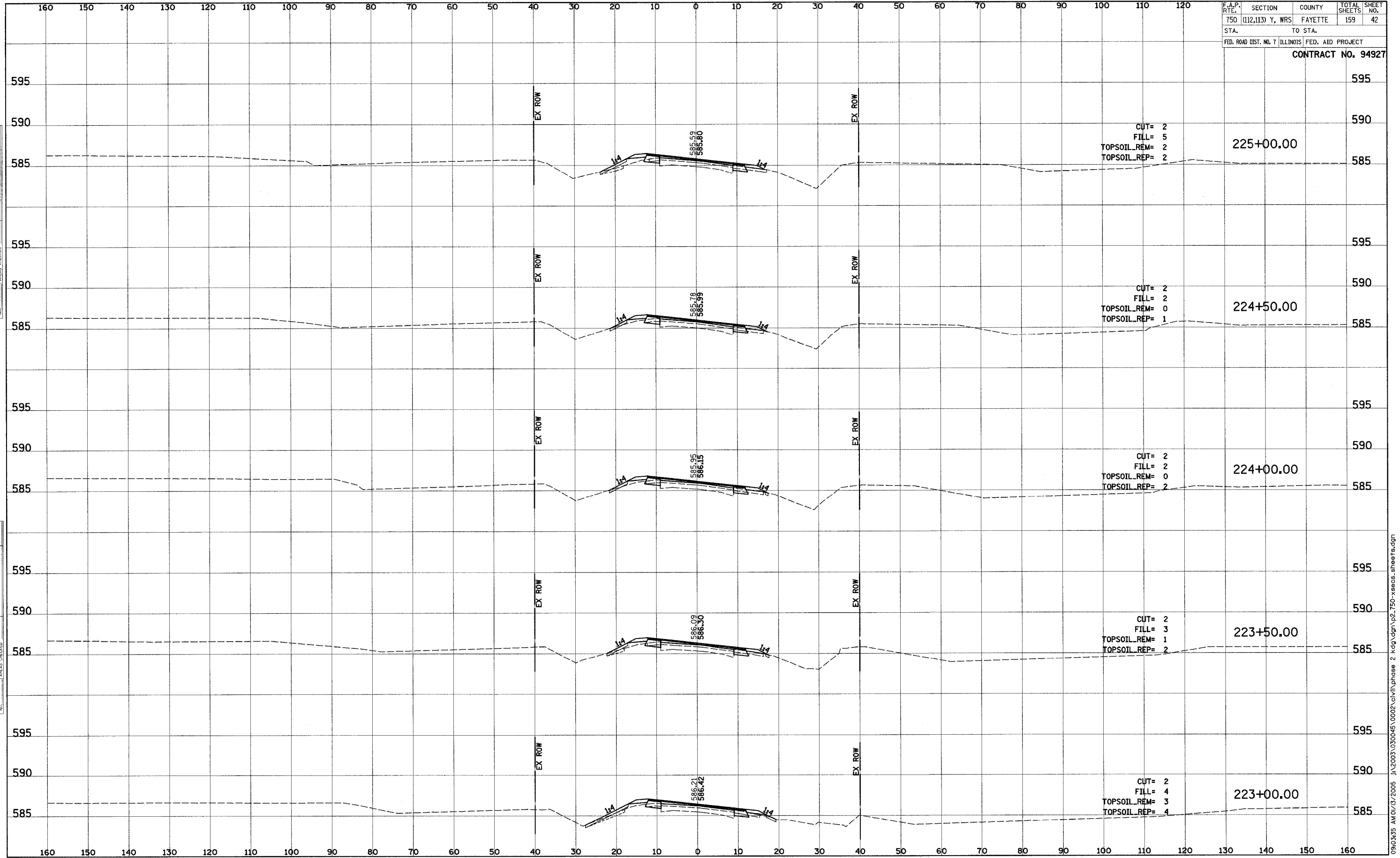


F.A.P. RTE.	SECTION	COUNTY	TOTAL SHEETS	SHEET NO.
750	(112,113) Y, WRS	FAYETTE	159	42
STA.		TO STA.		
FED. ROAD DIST. NO. 7		ILLINOIS FED. AID PROJECT		

CONTRACT NO. 94927



DATE: \_\_\_\_\_  
BY: \_\_\_\_\_  
NO. \_\_\_\_\_

FINAL SURVEY  
SUBMITTED  
PLOTTED  
NOTE BOOK  
TEMPLATE  
NO. \_\_\_\_\_  
AREAS CHECKED

DATE: \_\_\_\_\_  
BY: \_\_\_\_\_  
NO. \_\_\_\_\_

ORIGINAL SURVEY  
SUBMITTED  
PLOTTED  
NOTE BOOK  
TEMPLATE  
NO. \_\_\_\_\_  
AREAS CHECKED

J:\2003\030045\0002\civil\phase 2\kdg\dgn\p2\_750-xeecs.sheets.dgn