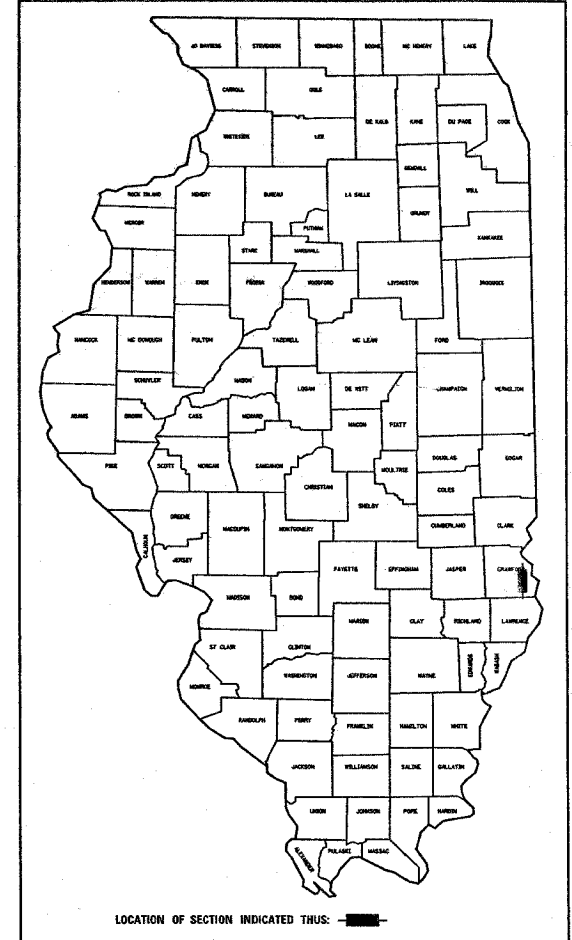


steffenmk
 3/31/2005
 c:\projects\94944\d01302pa.dgn

PROJECT ENGINEER : MARK DAUGHERTY
 SQUAD LEADER : KRISTI SANDSCHAFER
 DESIGNER : JOSH PORTER
 TELEPHONE : 217/342-3951 EX

332	(18,19,20) RS-2	CRAWFORD	21	1
FED. ROAD DIST. NO. 1		ILLINOIS	FED. AID PROJECT NO.	

D-97-013-02



STATE OF ILLINOIS
 DEPARTMENT OF TRANSPORTATION
 DIVISION OF HIGHWAYS

PLANS FOR PROPOSED FEDERAL HIGHWAY PROJECT

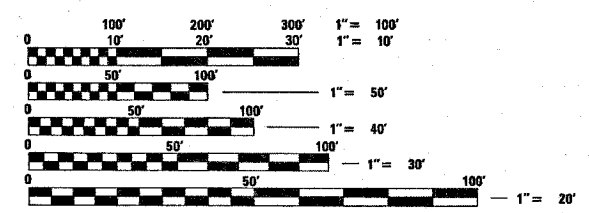
FAP ROUTE 332 (IL 1)
 PROJECT NO: *NHF-0332(078)*
 SECTION (18,19,20)RS-2
 CRAWFORD COUNTY
 BITUMINOUS RESURFACING

C-97-038-02

RR OMISSION
 STA 1008+93.79 TO STA 1009+00

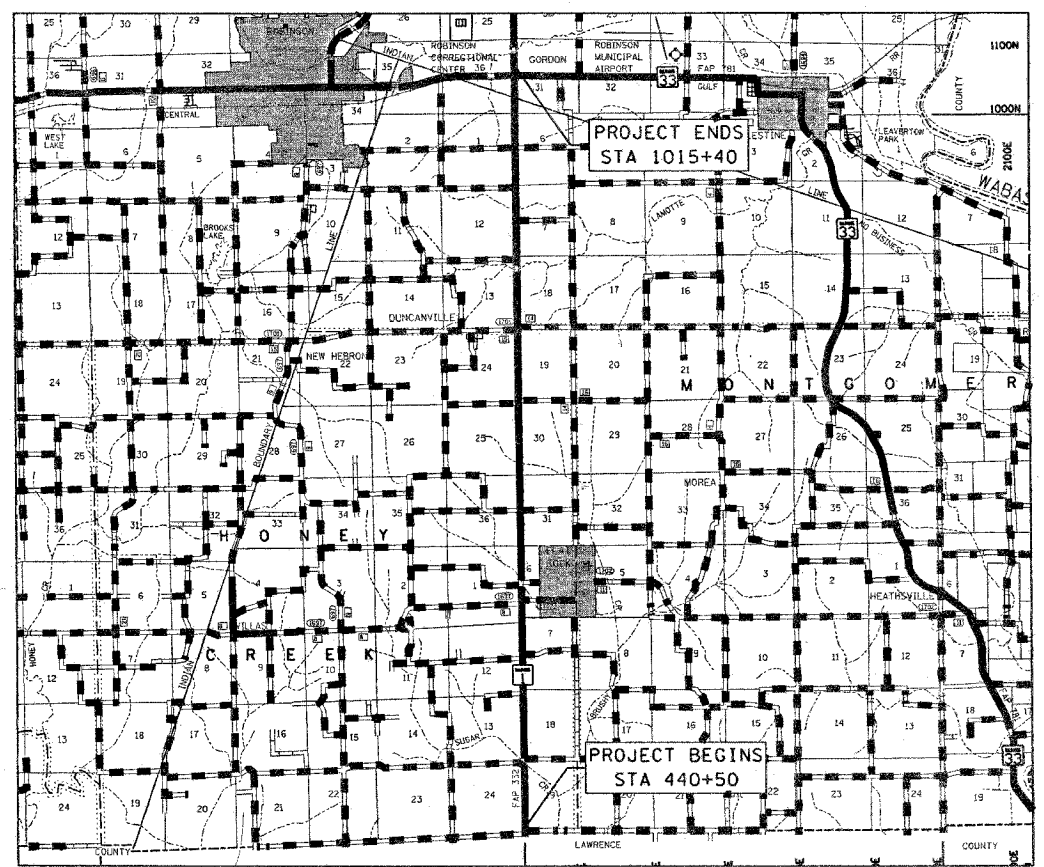
BRIDGE OMISSION
 STA 490+77 TO STA 491+99

STATION EQUATION
 IL 33
 STA 1021+23 BK = STA 0+00 AH



FULL SIZE PLANS HAVE BEEN PREPARED USING STANDARD ENGINEERING SCALES, REDUCED SIZED PLANS WILL NOT CONFORM TO STANDARD SCALES, IN MAKING MEASUREMENTS ON REDUCED PLANS, THE ABOVE SCALES MAY BE USED.

J.U.L.I.E.
 JOINT UTILITY LOCATION INFORMATION FOR EXCAVATION
 1-800-892-0123



STATE OF ILLINOIS
 DEPARTMENT OF TRANSPORTATION
 DIVISION OF HIGHWAYS

SUBMITTED APRIL 2 2005
Christine M. Deady
 DISTRICT ENGINEER

 20

ENGINEER OF PROJECT DEVELOPMENT AND IMPLEMENTATION
May 13 2005
Mike New
 ENGINEER OF DESIGN AND ENVIRONMENT

May 13, 2005
Victor Moden
 DIRECTOR, DIVISION OF HIGHWAYS

PRINTED BY THE AUTHORITY OF
 THE STATE OF ILLINOIS

CONTRACT NO. 94944
 TOWNSHIP : HONEY CREEK, MONTGOMERY

ADT = 4150 (2003)

GROSS LENGTH = 57490 FEET = 10.89 MILES
 NET LENGTH = 57368 FEET = 10.87 MILES

SEAL