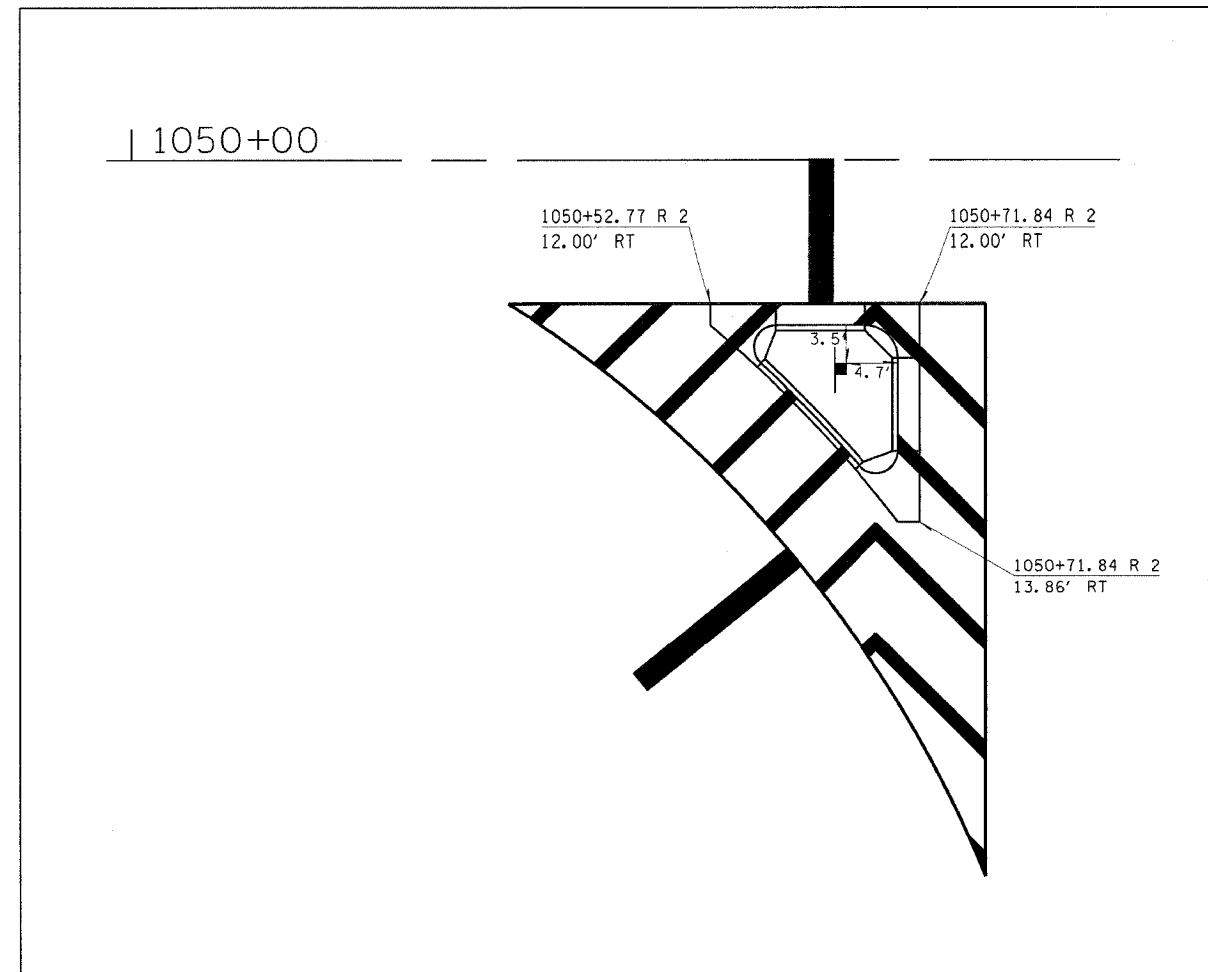
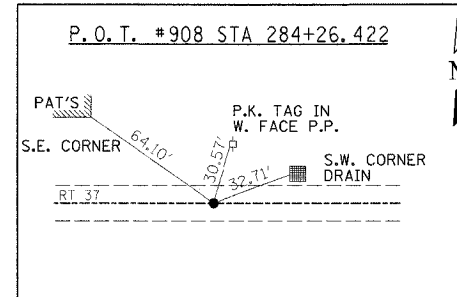
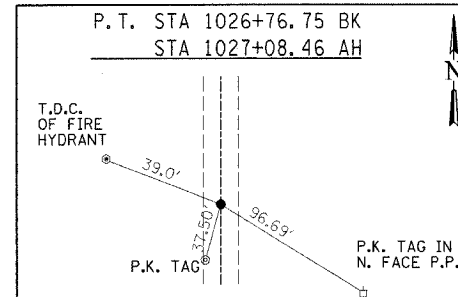
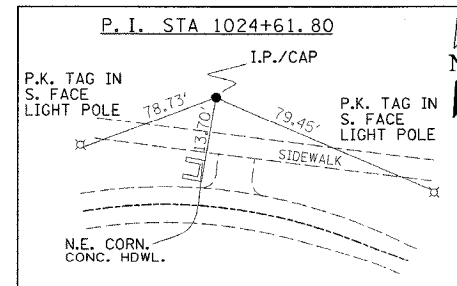
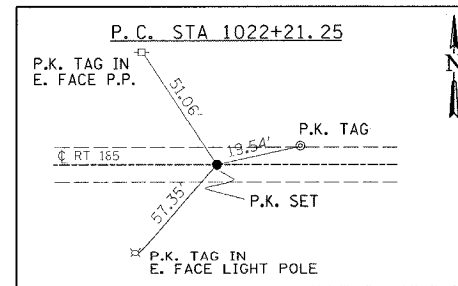


\$USER\$ \$DATE\$
 c:\projects\94962\d03102pa.dgn
 REV: TIES

FAP STL	SECTION	COUNTY	TOTAL SHEETS	SHEET NO.
750	(114) Y.WRS	FAYETTE	14	74
FED. ROAD DIST. NO. 7		ILLINOIS	FED. AID PROJECT NO.	

CONTRACT NO. 94962



BENCHMARKS

BM 100 R.R. SPIKE IN P.P., NE QUAD OF INT. OF IL 185 & IL 37 STA 291+70 49.2' LT CL OF IL 37 ELEV = 581.748
BM 101 CHISELED SQUARE ON NW CORNER OF BRIDGE ON SW CORNER OF HEADWALL STA 1033+78 19.4' LT ELEV = 572.532
BM 102 R.R. SPIKE IN P.P., NE QUAD OF IL 185 & TR. 2250E INT. BY HIGH SCHOOL STA 1020+12 47.7' LT ELEV = 574.184
BM 103 CHISELED SQUARE IN SE WINGWALL ON OVERPASS OVER I-57 STA 1002+13 32' RT ELEV = 598.778

REVISIONS	
NAME	DATE

ILLINOIS DEPARTMENT OF TRANSPORTATION
**ALIGNMENT TIES,
 BENCHMARKS &
 ISLAND DETAILS**

SCALE: VERT. _____
 HORIZ. _____
 DATE _____ DRAWN BY _____
 CHECKED BY _____