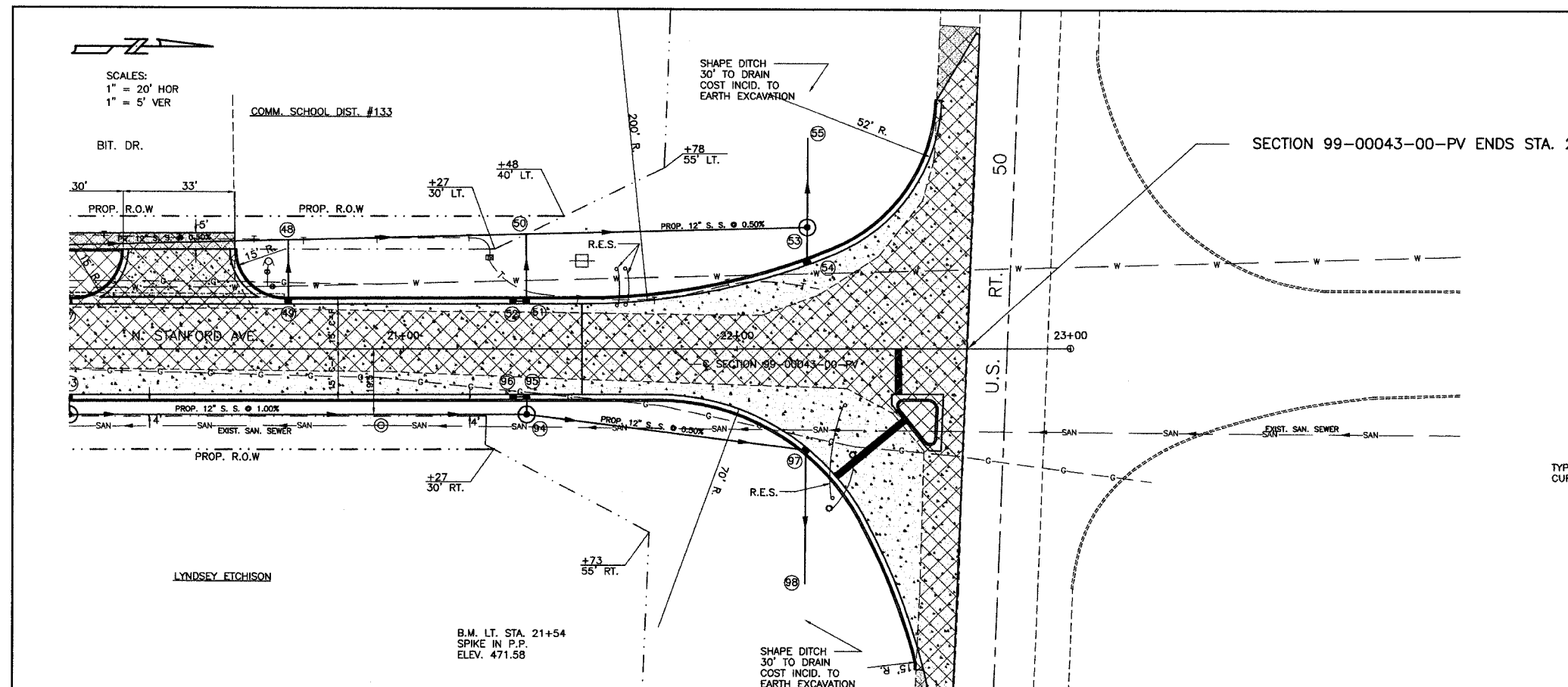
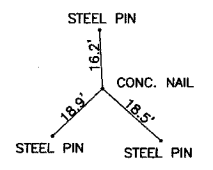


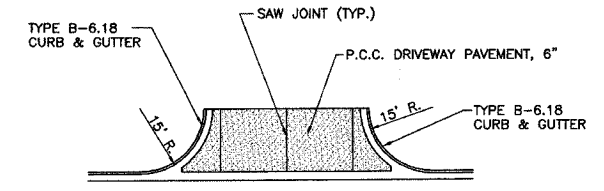
ROUTE	SECTION	CITY	TOTAL SHEETS	SHEET NO.
F.A.U. 8533	99-00043-00-PV	FLORA	18	8
CONTRACT NO. 95420		ILLINOIS	PROJECT M-5023(9)	



TIES P.O.T. STA. 22+00.00



- NOTES
1. DRIVEWAYS SHALL HAVE SAW JOINTS AT 15' SPACING MAX.
 2. TIE BARS (#6 BARS @ 24" O.C.) SHALL BE INSTALLED BETWEEN THE CURB & GUTTER AND THE DRIVEWAY PAVEMENT.



COMMERCIAL ENTRANCE DETAILS

