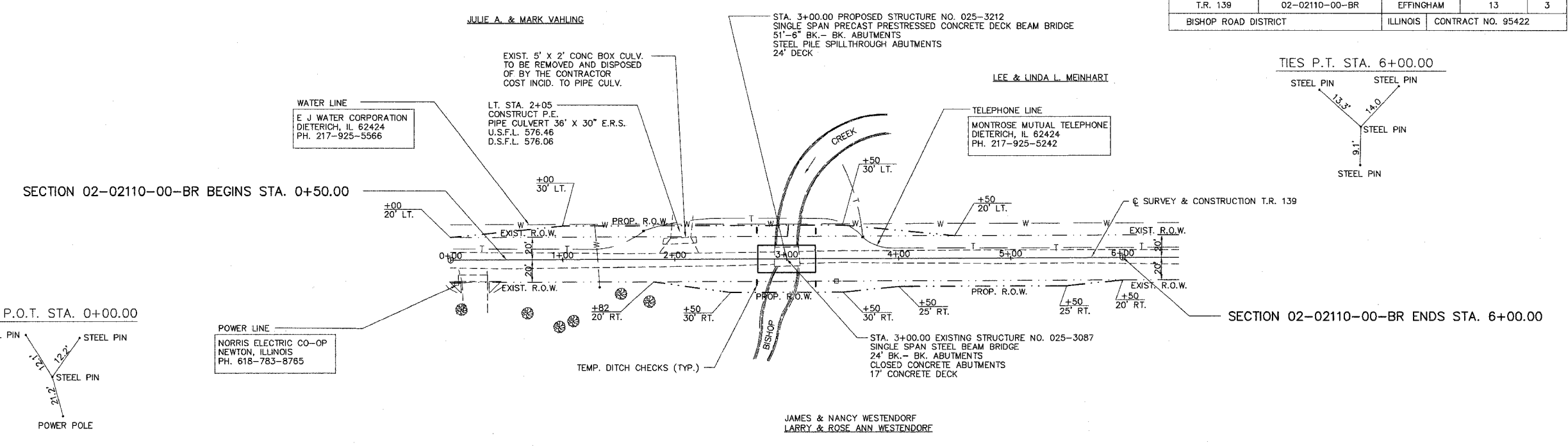


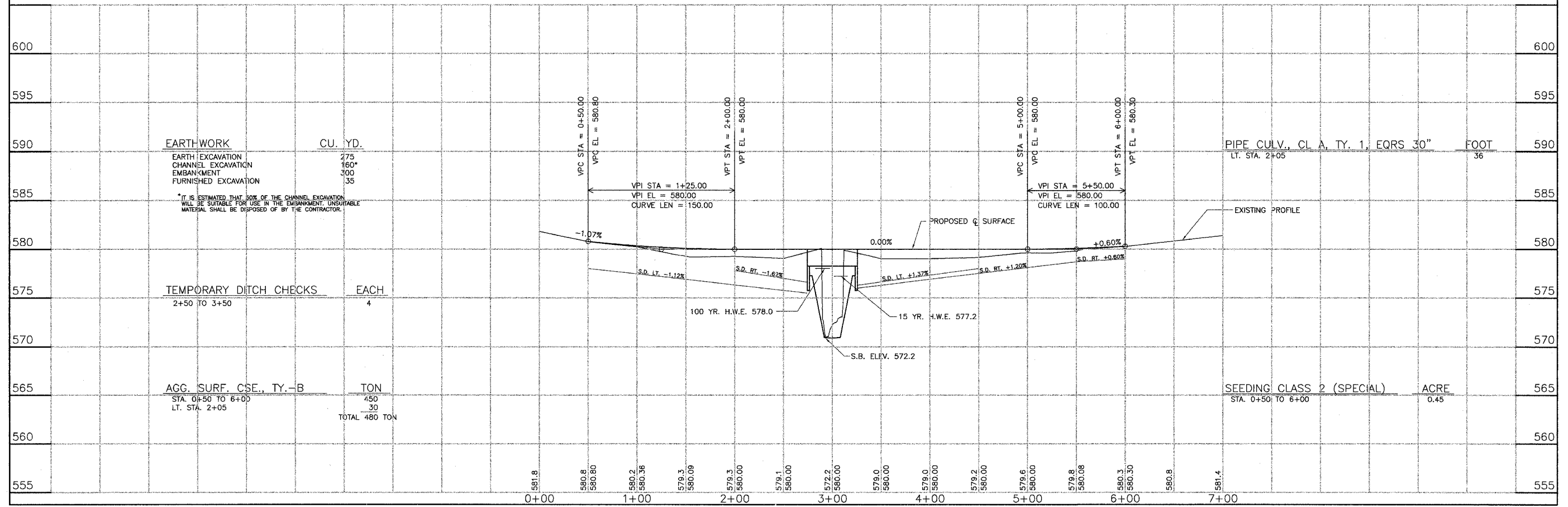
ROUTE	SECTION	COUNTY	TOTAL SHEETS	SHEET NO.
T.R. 139	02-02110-00-BR	EFFINGHAM	13	3
BISHOP ROAD DISTRICT		ILLINOIS	CONTRACT NO. 95422	

SCALES:  
1" = 50' HOR  
1" = 5' VER



B.M. LT. STA. 3+44  
SPIKE IN P.P.  
ELEV. 579.14

TRANSITION EXISTING ROADWAY TO PROPOSED ROADWAY  
STA. 0+00 TO 0+50 AND STA. 6+00 TO 6+50  
QUANTITIES FOR THE ABOVE ARE INCLUDED IN THOSE LISTED



EARTHWORK	CU. YD.
EARTH EXCAVATION	275
CHANNEL EXCAVATION	160
EMBANKMENT	300
FURNISHED EXCAVATION	35

TEMPORARY DITCH CHECKS	EACH
2+50 TO 3+50	4

AGG. SURF. CSE., TY.-B	TON
STA. 0+50 TO 6+00	450
LT. STA. 2+05	30
TOTAL	480 TON

PIPE CULV., CL. A, TY. 1, EQRS 30"	FOOT
LT. STA. 2+05	36

SEEDING CLASS 2 (SPECIAL)	ACRE
STA. 0+50 TO 6+00	0.45