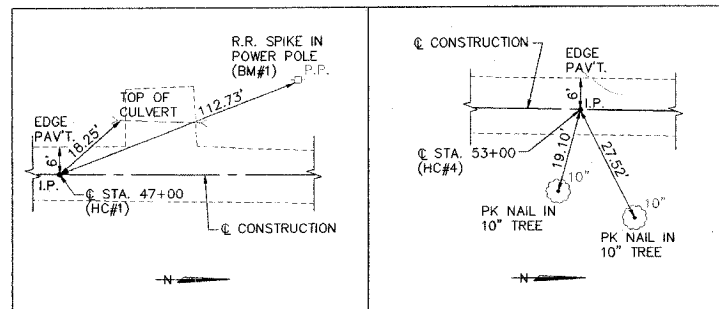


LOCAL TIES



CONSTRUCT FEEDING CLASS 2 (SPECIAL)
 STA. 48+60.25 TO STA. 50+96.75 = 0.15 ACRE

HORIZONTAL CONTROL COORDINATES

POINT	LOCATION	N. COOR.	E. COOR.
HC#1(IRON PIN)	© STA. 47+00	5936.65	5019.36
HC#2(IRON PIN)	12' LT., STA. 49+69	6206.27	5011.40
HC#3(IRON PIN)	9' LT., STA. 52+29	6465.84	5018.97
HC#4(IRON PIN)	© STA. 53+00	6536.57	5028.96

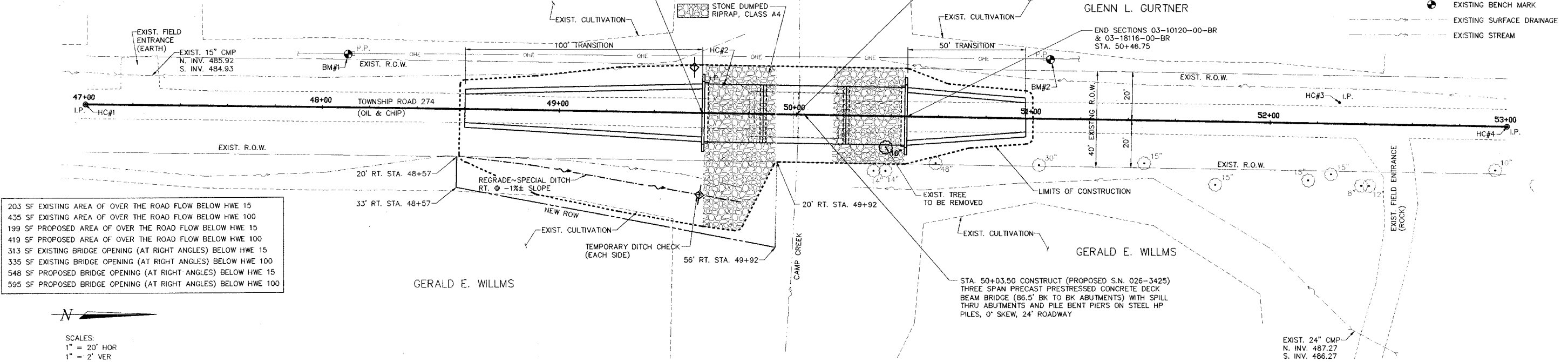
BENCH MARK COORDINATES

POINT	LOCATION	ELEV.
BM#1(R.R. SPIKE IN POWER POLE)	22' LT., STA. 48+10	488.23
BM#2(R.R. SPIKE IN POWER POLE)	25' LT., STA. 51+07	490.61

ROUTE NO.	SECTION	COUNTY	TOTAL SHEETS	SHEET NO.
T.R. 274	03-10120-00-BR 03-18116-00-BR	FAYETTE	14	3

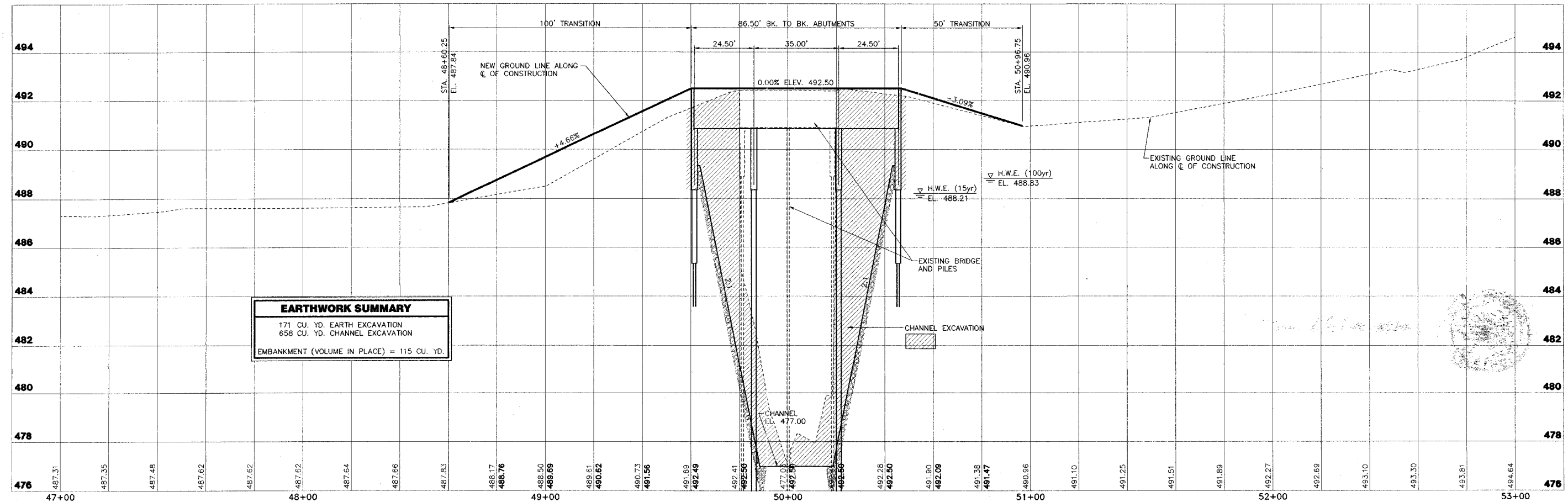
LEGEND

- P.P. - EXISTING POWER POLE
- OHE - EXISTING OVERHEAD ELECTRIC LINE
- (Tree symbol) - EXISTING TREE
- (Dashed line) - EXISTING TREE LINE
- (Dot) - EXISTING IRON PIN
- (Circle with dot) - EXISTING BENCH MARK
- (Dashed line) - EXISTING SURFACE DRAINAGE
- (Wavy line) - EXISTING STREAM



203 SF EXISTING AREA OF OVER THE ROAD FLOW BELOW HWE 15
 435 SF EXISTING AREA OF OVER THE ROAD FLOW BELOW HWE 100
 199 SF PROPOSED AREA OF OVER THE ROAD FLOW BELOW HWE 15
 419 SF PROPOSED AREA OF OVER THE ROAD FLOW BELOW HWE 100
 313 SF EXISTING BRIDGE OPENING (AT RIGHT ANGLES) BELOW HWE 15
 335 SF EXISTING BRIDGE OPENING (AT RIGHT ANGLES) BELOW HWE 100
 548 SF PROPOSED BRIDGE OPENING (AT RIGHT ANGLES) BELOW HWE 15
 595 SF PROPOSED BRIDGE OPENING (AT RIGHT ANGLES) BELOW HWE 100

SCALES:
 1" = 20' HOR
 1" = 2' VER



EARTHWORK SUMMARY	
171 CU. YD. EARTH EXCAVATION	
658 CU. YD. CHANNEL EXCAVATION	
EMBANKMENT (VOLUME IN PLACE) = 115 CU. YD.	

CLARK ENGINEERS, INC.
 2524 South Broadway
 Salem, Illinois 62881
 PH(618)548-3500
 FAX(618)548-5246
 I.L. Design Firm Registration
 No. 184-00871

T.R. 274 SECTIONS 03-10120-00-BR & 03-18116-00-BR
OTEGA & VANDALIA ROAD DISTRICTS
FAYETTE COUNTY, ILLINOIS

PLAN AND PROFILE
 STA. 47+00 TO STA. 53+00

SURVEY	CHECKED	DATE
JAS		03/01/05
DESIGN	APPROVED	REVISED
MRQ		
DRAWN	JOB NO.	
JSD, BLT	FAH00029	

L:\Fond0029_ep\RC\p01001.dwg, 03/01/05 11:46:35 AM

L:\Fond0029\ep\plan\03-10120-00-BR-1.dwg, 03/01/05