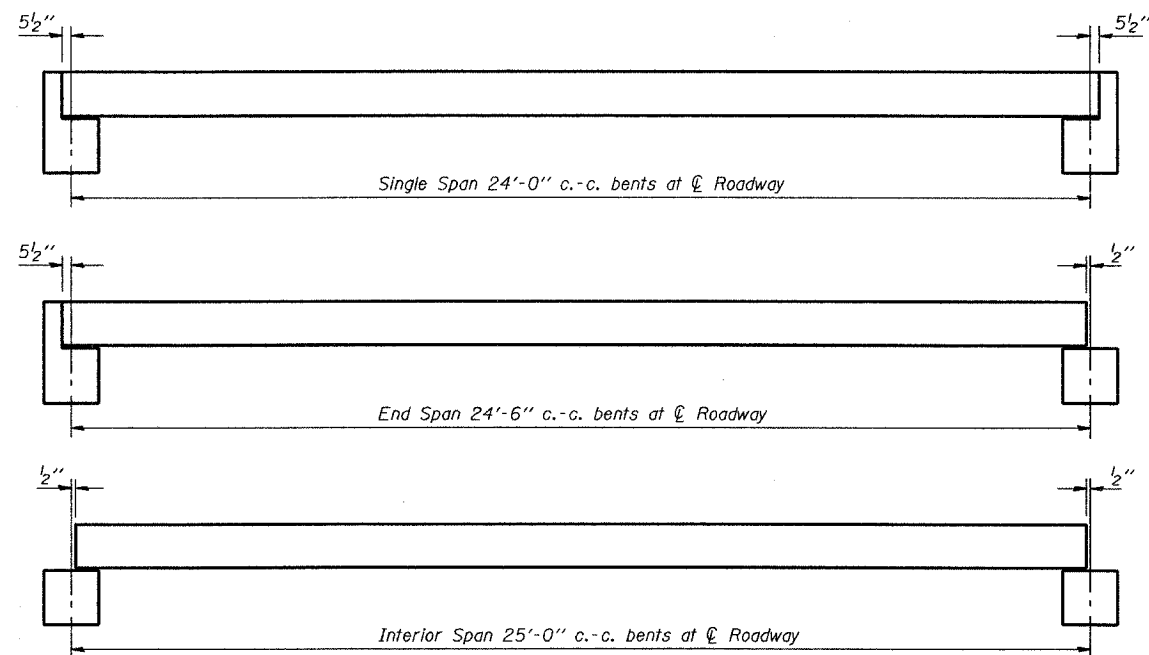
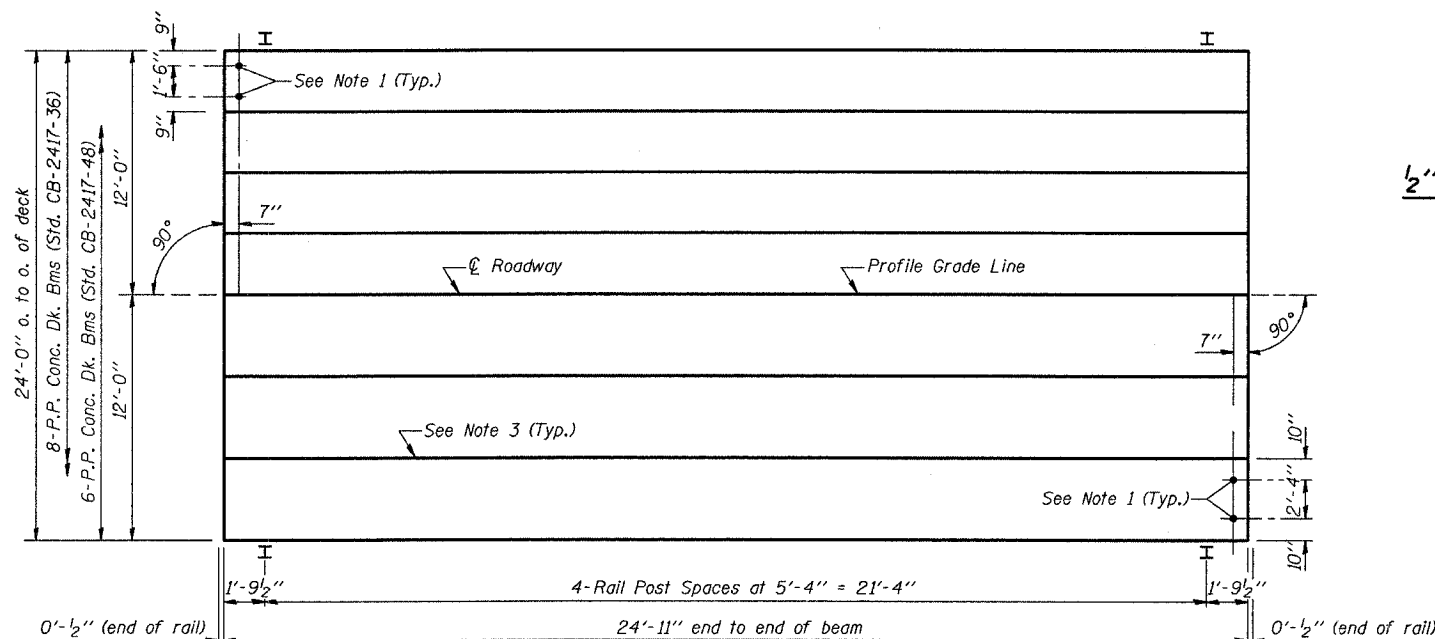


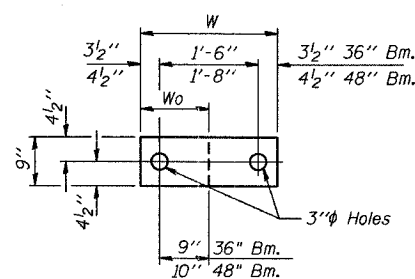
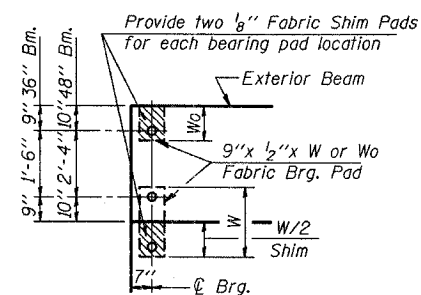
NO.	SECTION	COUNTY	TOTAL SHEETS	SHEET NO.
T.R. 274	03-10120-00-BR 03-18116-00-BR	FAYETTE	14	5
FED. ROAD DIST. NO. 7		BLDG. NO.	FED. AID PROJECT NO.	
CONTRACT No. 95427				



TYPICAL ELEVATIONS

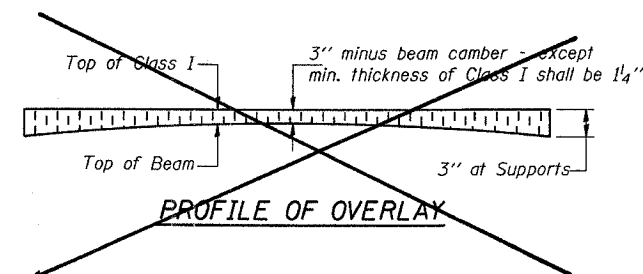


PLAN

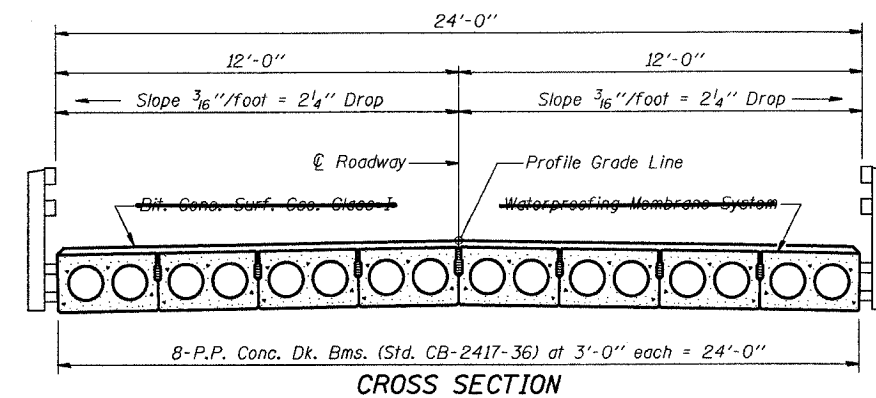


Beam	W	Wo
36"	2'-1"	1'-0 1/2"
48"	2'-5"	1'-2 1/2"

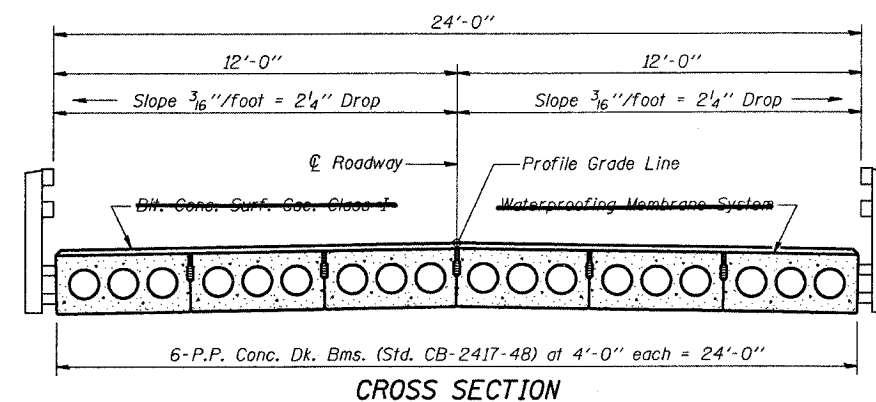
1/2" FABRIC BRG. PAD DETAILS



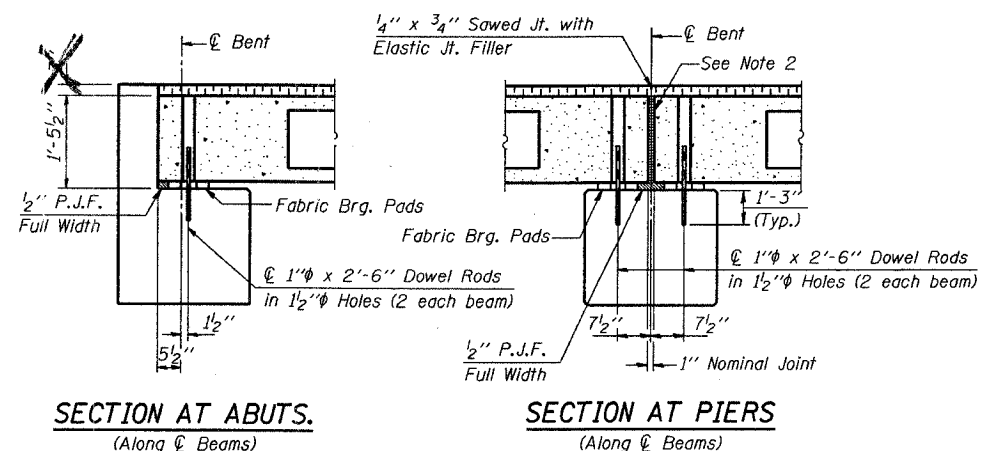
PROFILE OF OVERLAY



CROSS SECTION



CROSS SECTION



SECTION AT ABUTS.  
(Along centerline Beams)

SECTION AT PIERS  
(Along centerline Beams)

QUANTITIES FOR ONE SPAN

P.P. Conc. Dk. Bm. 17" Dp.	600 Sq. Ft.
Steel Railing	50 Ft.
Diff. Conc. Surf. Coe. Class I	40.6 Tons
Waterproofing Membrane System	66.7 Sq. Yds.

NOTES

1. After beams have been erected, holes shall be drilled into substructure and anchor dowels placed. Dowel holes shall be filled with non-shrink grout to top of beam and allowed to cure min. 24 hrs. prior to grouting the shear keys.
2. Nominal 1" joint at centerline Pier shall be filled with non-shrink grout.
3. Longitudinal keys shall be grouted.

Illinois Department of Transportation

PASSED NOVEMBER 1, 1995

*Ralph E. Anderson*  
Engineer of Bridge Design

APPROVED NOVEMBER 1, 1995

*Ralph E. Anderson*  
Engineer of Bridges and Structures

ISSUED 11-81

P.P.C. DECK BEAM  
SUPERSTRUCTURE

24' RDWY.	17" BMS.	25' SPAN	0° SKEW
STANDARD CS-2417-25			