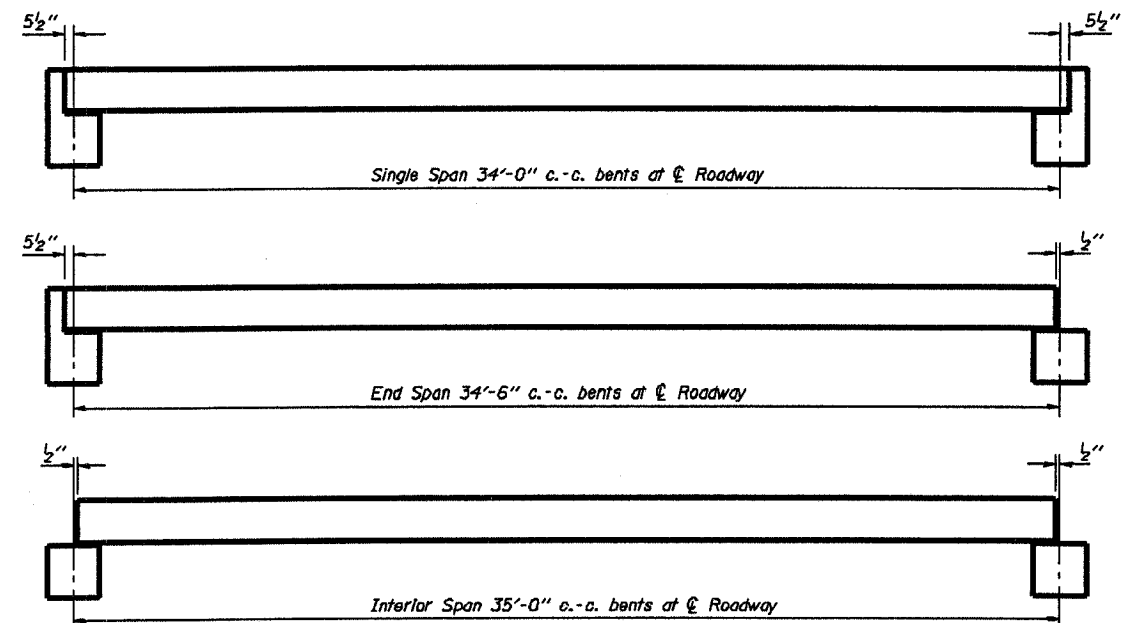
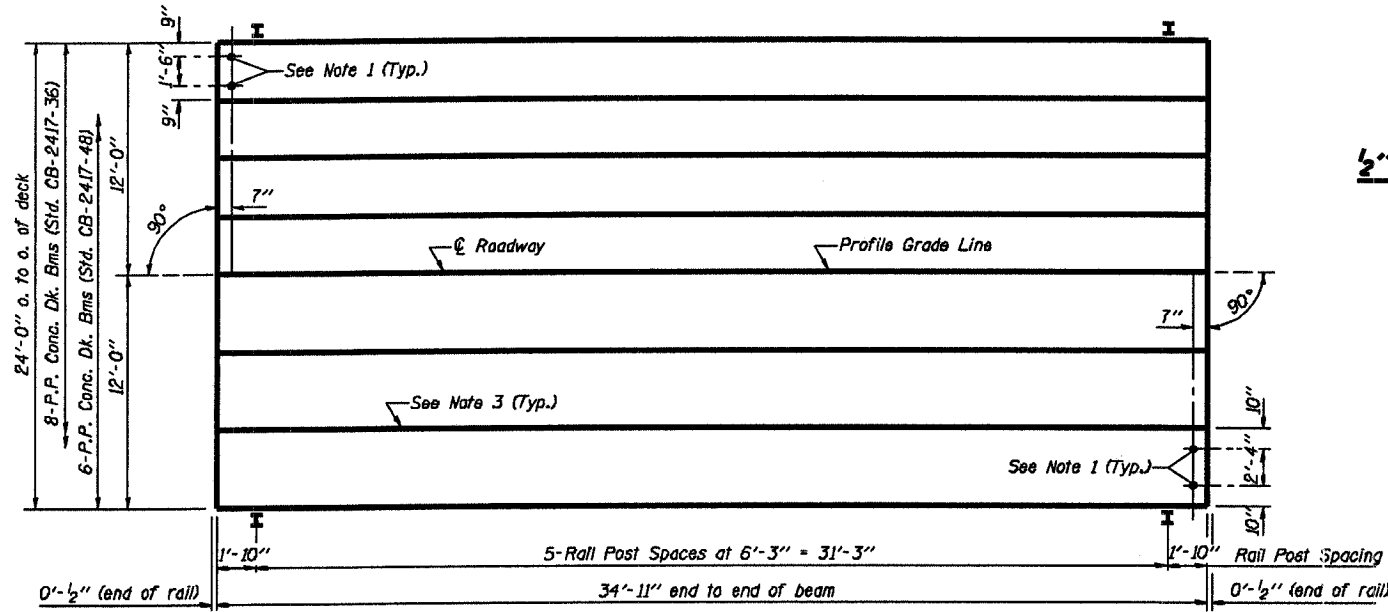


RT.	SECTION	COUNTY	TOTAL SHEETS	SHEET NO.
T.R.	03-10120-00-BR 274	FAYETTE	14	6

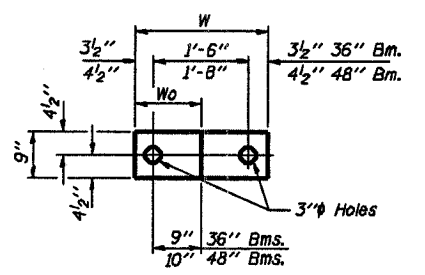
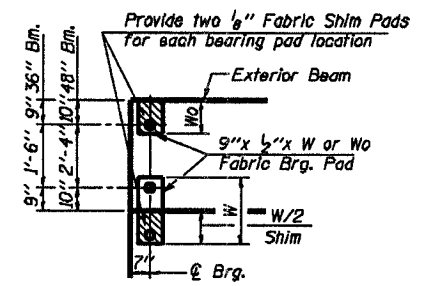
CONTRACT No.  
95427



**TYPICAL ELEVATIONS**

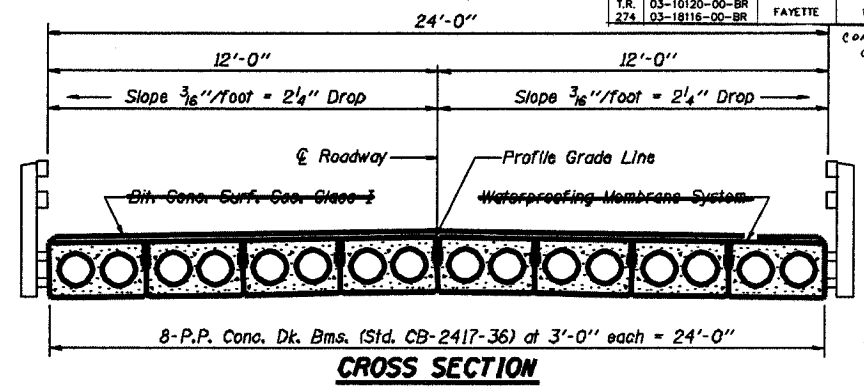


**PLAN**

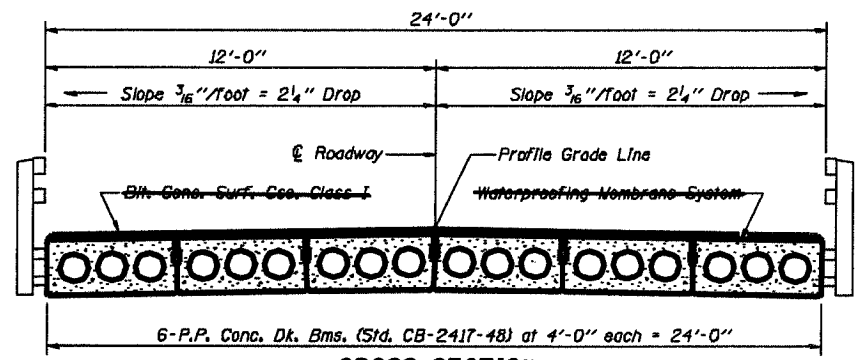


Beam	W	Wo
36"	2'-1"	1'-0 1/2"
48"	2'-5"	1'-2 1/2"

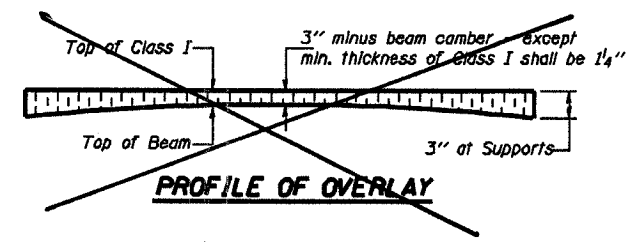
**1/2" FABRIC BRG. PAD DETAILS**



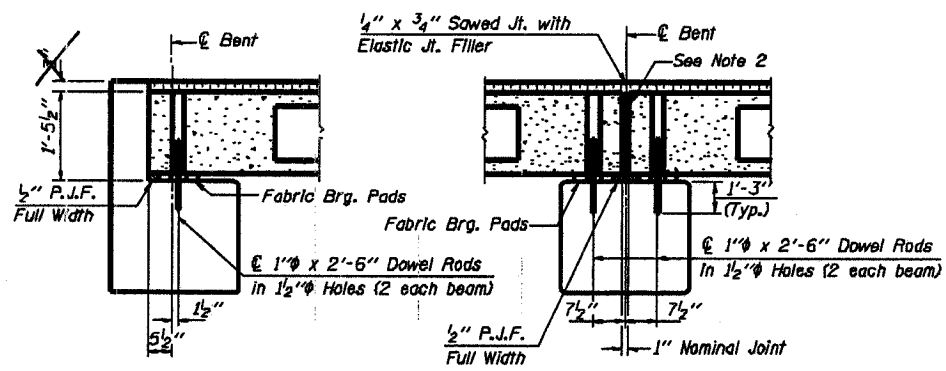
**CROSS SECTION**



**CROSS SECTION**



**PROFILE OF OVERLAY**



**SECTION AT ABUTS.**  
(Along centerline of Beams)

**SECTION AT PIERS**  
(Along centerline of Beams)

**NOTES**

1. After beams have been erected, holes shall be drilled into substructure and anchor dowels placed. Dowel holes shall be filled with non-shrink grout to top of beam and allowed to cure min. 24 hrs. prior to grouting the shear keys.
2. Nominal 1" joint at centerline of Pier shall be filled with non-shrink grout.
3. Longitudinal keys shall be grouted.

**QUANTITIES FOR ONE SPAN**

P.P. Conc. Dk. Bm. 17" Dp.	840 Sq. Ft.
Steel Railing	70 Ft.
Bit. Conc. Surf. Conc. Class 2	12.7 Tons
Waterproofing Membrane System	93.3 Sq. Yds.

Mississippi Department of Transportation  
 PASSED NOVEMBER 1, 1995  
 Approved by: *David J. ...*  
 Engineer of Bridge Design  
 APPROVED NOVEMBER 1, 1995  
 Approved by: *Ralph E. ...*  
 Engineer of Bridges and Structures

**P.P.C. DECK BEAM SUPERSTRUCTURE**  
**24' RDWY. 17" BMS. 35' SPAN 0° SKEW**  
**STANDARD CS-2417-35**