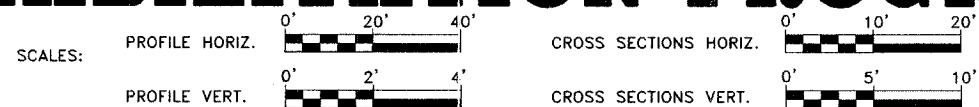
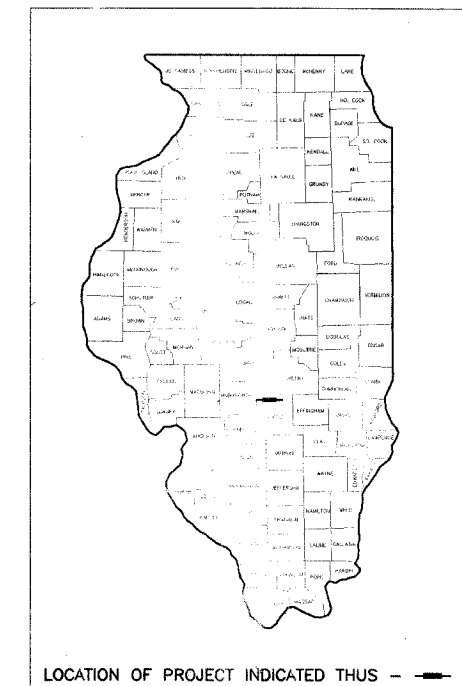


STATE OF ILLINOIS DEPARTMENT OF TRANSPORTATION DIVISION OF HIGHWAYS PLANS FOR PROPOSED BRIDGE REPLACEMENT AND REHABILITATION PROGRAM

ROUTE NO.	SECTION	COUNTY	TOTAL SHEETS	SHEET NO.
T.R. 54	09118-00-BR	FAYETTE	14	1
FED. ROAD DIST. NO.	ILLINOIS	PROJECT		

CONTRACT NO. 95429



SECTION 02-09118-00-BR PROJECT NO. BROS-051(63) FAYETTE COUNTY JOB NO. C-97-089-02

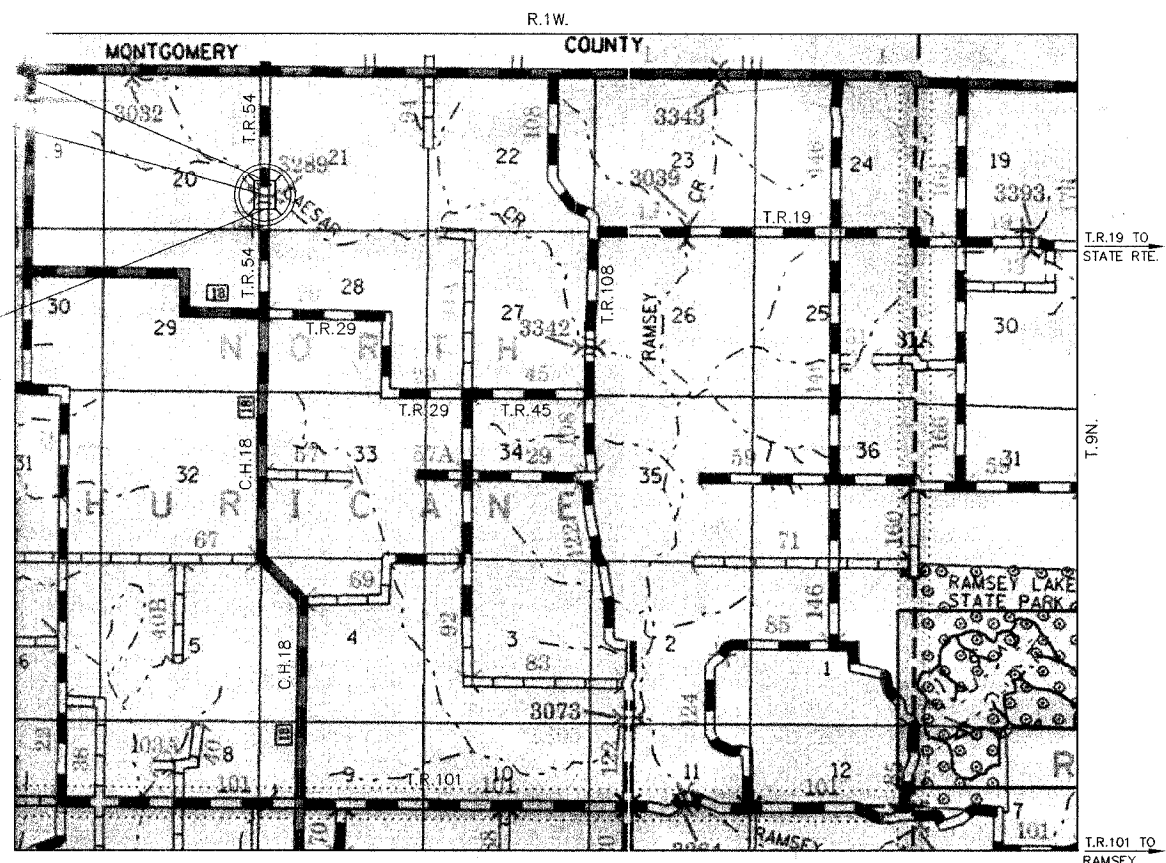
INDEX OF SHEETS

- 1 COVER SHEET
 - 2 TYPICAL CROSS SECTION, GENERAL NOTES AND SUMMARY OF QUANTITIES
 - 3 PLAN AND PROFILE SHEET
 - 4-13 BRIDGE PLANS
 - 14 CROSS SECTIONS
- STANDARD 000001-04 STANDARD SYMBOLS, ABBREVIATIONS AND PATTERNS
- STANDARD 280001-02 TEMPORARY EROSION CONTROL SYSTEMS
- STANDARD 702001-05 TRAFFIC CONTROL DEVICES
- STANDARD P.L.R. 21-6 TYPICAL APPLICATION OF TRAFFIC CONTROL DEVICES FOR CONSTRUCTION ON RURAL LOCAL HIGHWAYS

END SECTION 02-09118-00-BR
STA. 50+40.75

STA. 50+00 - CONSTRUCT THREE SPAN
PRECAST PRESTRESSED CONCRETE DECK BEAM
BRIDGE (81.50' I.K. 3 BK. ABUTMENTS) WITH
THRU ABUTMENT AND PILE BENT PIERS,
0° SKEW, 24' ROADWAY
EXISTING STRUCTURE NO. 026-3289
PROPOSED STRUCTURE NO. 026-3424

BEGIN SECTION 02-09118-00-BR
STA. 49+59.25



LOCATION MAP

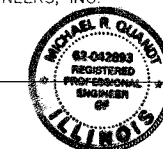
APPROXIMATE SCALE - 1" = 0.53 MILES
NET LENGTH OF IMPROVEMENTS = 81.50 FEET = 0.015 MILE

THE ACCEPTANCE OF THIS PROJECT IS BASED ON THE MINIMUM DESIGN CRITERIA FOR A FEDERAL-AID BRIDGE REPLACEMENT AND REHABILITATION PROGRAM

Maureen E. Kastl
DISTRICT ENGINEER OF LOCAL
ROADS AND STREETS

PLANS PREPARED BY CLARK ENGINEERS, INC.
DATE 3/1, 2005

Michael R. Quandt
MICHAEL R. QUANDT, P.E.

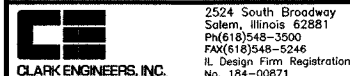


REVIEWED 3-4, 2005

BY *Michael A. May*
COUNTY ENGINEER
FAYETTE COUNTY, ILLINOIS

48 HOURS PRIOR TO EXCAVATION CALL J.U.L.I.E.: 1-800-892-0123

CLASS ROAD: MINOR COLLECTOR
A.D.T. = 100
40 M.P.H.



CE JOB NO. FAHD0030