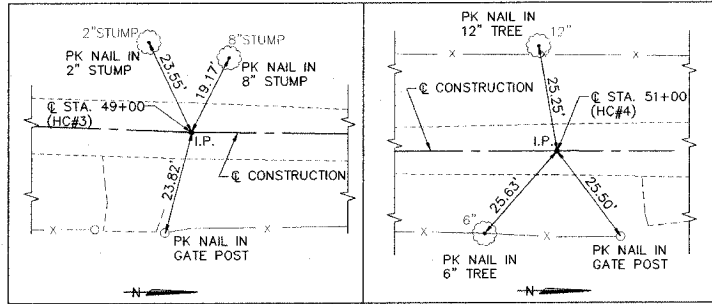


**LOCAL TIES**



**HORIZONTAL CONTROL COORDINATES**

POINT	LOCATION	N. COOR.	E. COOR.
HC#1 (IRON PIN)	2.81' LT., STA. 47+00.27	7302.88	7747.17
HC#2 (IRON PIN)	2.58' LT., STA. 47+50.05	7352.79	7744.05
HC#3 (IRON PIN)	© STA. 49+00	7502.58	7751.82
HC#4 (IRON PIN)	© STA. 51+00	7702.56	7754.69
HC#5 (IRON PIN)	8.95' RT., STA. 51+98.15	7800.76	7763.14
HC#6 (IRON PIN)	© STA. 53+00	7902.56	7753.67

**BENCH MARK COORDINATES**

POINT	LOCATION	ELEV.
BM#1 (R.R. SPIKE IN 15\"/>		

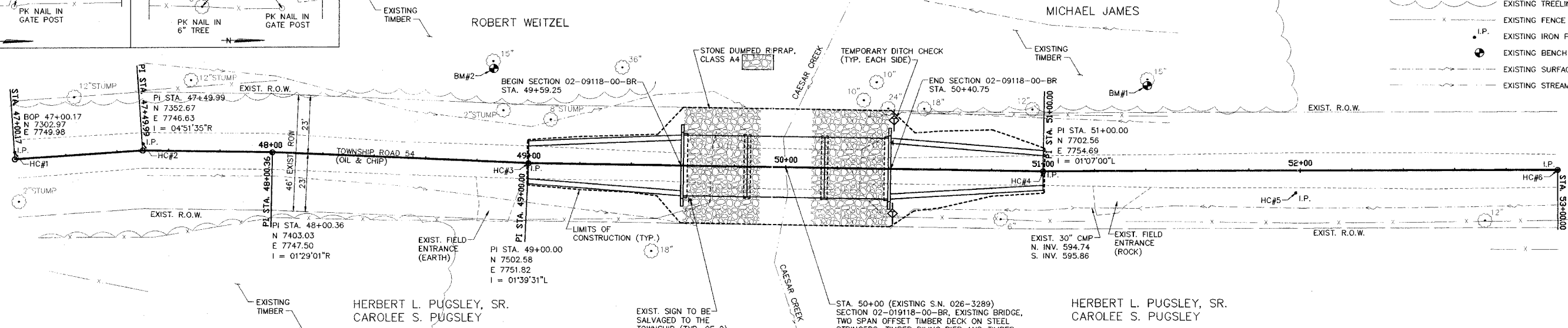
**CONSTRUCT SEEDING, CLASS 2 (SPECIAL)**  
STA. 49+00 TO STA. 51+00 = 0.03 ACRE

ROUTE NO.	SECTION	COUNTY	TOTAL SHEETS	SHEET NO.
T.R. 54	02-09118-00-BR	FAYETTE	14	3

FED. ROAD DIST. NO. ILLINOIS PROJECT CONTRACT NO. 95429

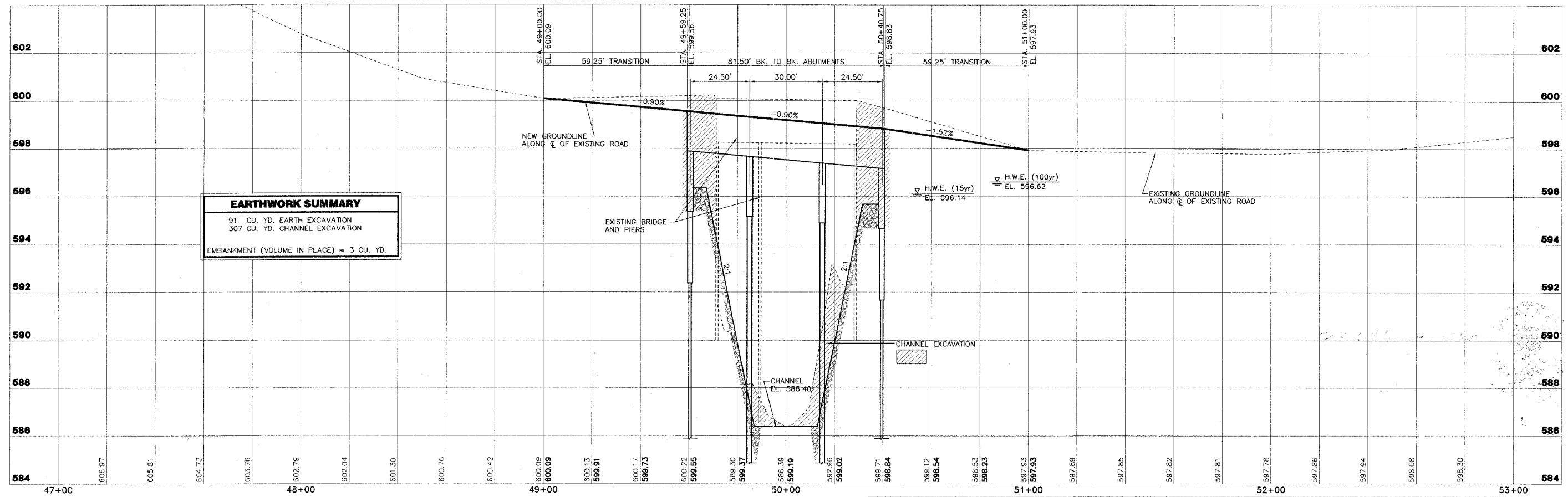
**LEGEND**

- EXISTING SIGN
- EXISTING TREE
- EXISTING STUMP
- EXISTING TREELINE
- EXISTING FENCE
- EXISTING IRON PIN
- EXISTING BENCH MARK
- EXISTING SURFACE DRAINAGE
- EXISTING STREAM



SCALES:  
1" = 20' HOR  
1" = 2' VER

0 SF	EXISTING AREA OF OVER THE ROAD FLOW BELOW HWE 15
0 SF	EXISTING AREA OF OVER THE ROAD FLOW BELOW HWE 100
0 SF	PROPOSED AREA OF OVER THE ROAD FLOW BELOW HWE 15
0 SF	PROPOSED AREA OF OVER THE ROAD FLOW BELOW HWE 100
389 SF	EXISTING BRIDGE OPENING (AT RIGHT ANGLES) BELOW HWE 15
416 SF	EXISTING BRIDGE OPENING (AT RIGHT ANGLES) BELOW HWE 100
408 SF	PROPOSED BRIDGE OPENING (AT RIGHT ANGLES) BELOW HWE 15
438 SF	PROPOSED BRIDGE OPENING (AT RIGHT ANGLES) BELOW HWE 100



**EARTHWORK SUMMARY**  
91 CU. YD. EARTH EXCAVATION  
307 CU. YD. CHANNEL EXCAVATION  
EMBANKMENT (VOLUME IN PLACE) = 3 CU. YD.

**CLARK ENGINEERS, INC.**  
2524 South Broadway  
Salem, Illinois 62881  
PH (618) 548-3500  
FAX (618) 548-5246  
IL Design Firm Registration  
No. 184-00871

**T.R. 54 SECTION 02-09118-00-BR**  
**NORTH HURRICANE ROAD DISTRICT**  
**FAYETTE COUNTY, ILLINOIS**

**PLAN AND PROFILE**  
STA. 47+00 TO STA. 53+00

DESIGN	CHECKED	DATE
JAS	JAS	02/24/05
DRAWN	APPROVED	REVISIONS
JMW, BLT	MRS	
JOB NO.	PROJECT	
FAH00030		