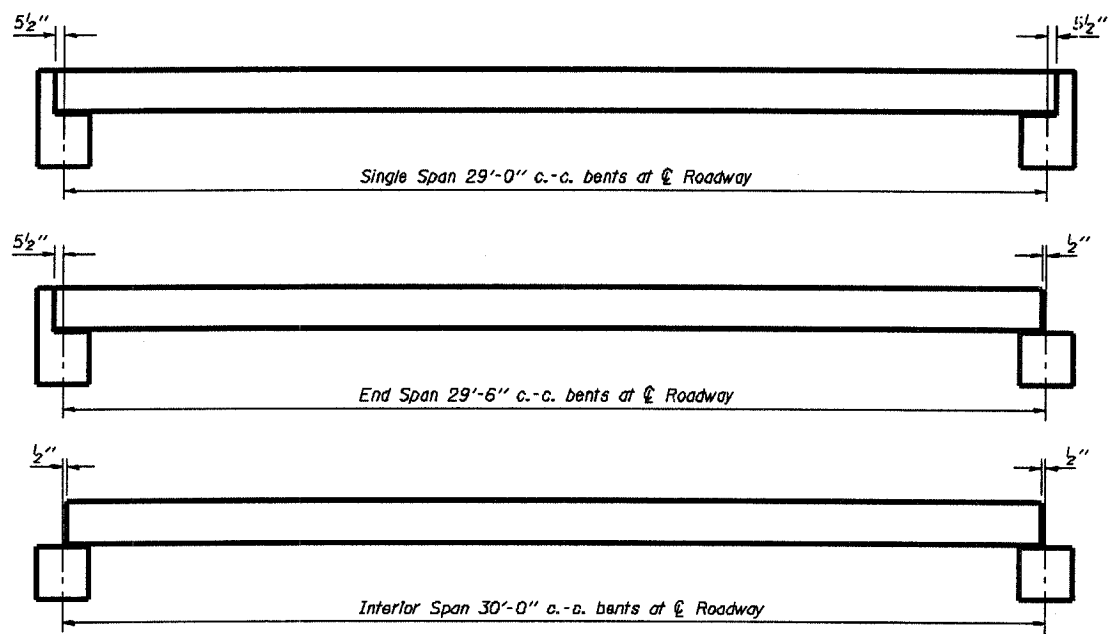
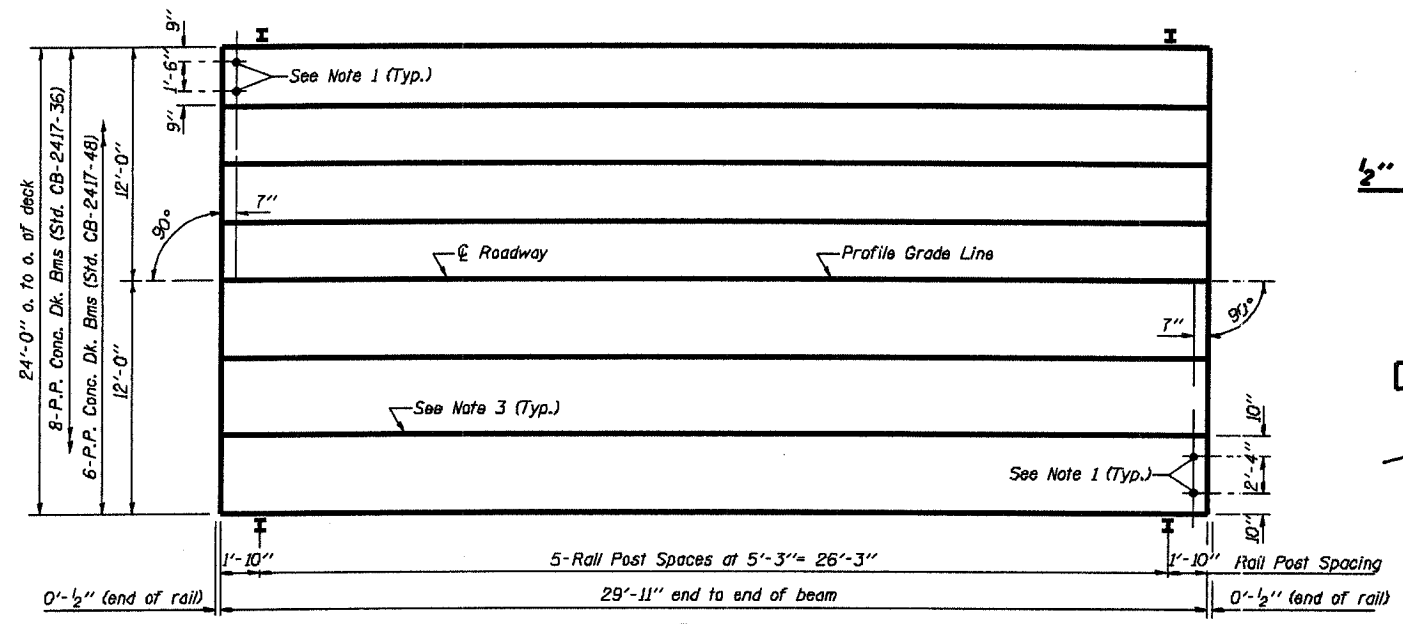


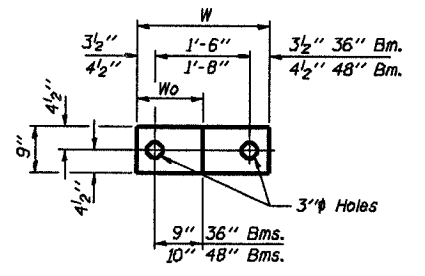
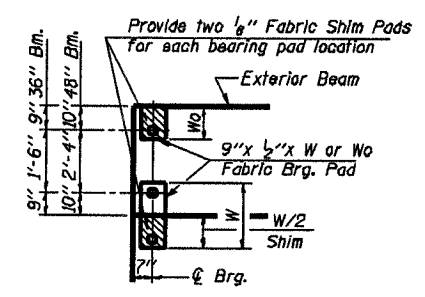
ROUTE	SECTION	COUNTY	TOTAL SHEETS	SHEET NO.
T.R. 54	02-09118-00-BR	FAYETTE	14	6
FED. ROAD DIST. NO.	ILLINOIS PROJECT	CONTRACT NO. 95429		



**TYPICAL ELEVATIONS**

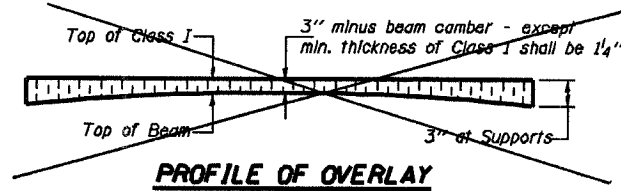


**PLAN**

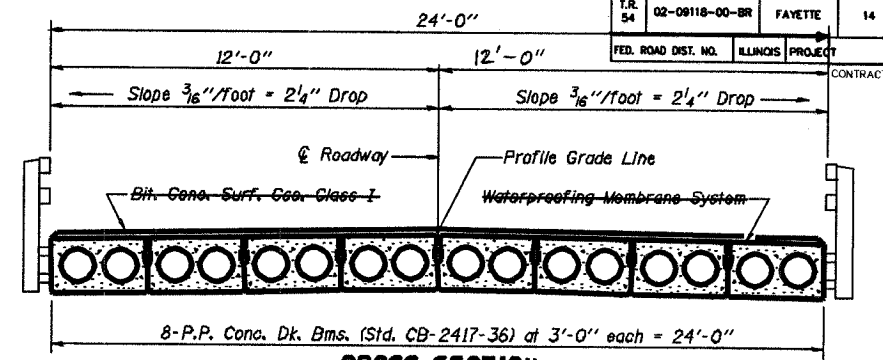


Beam	W	Wo
36"	2'-1"	1'-0 1/2"
48"	2'-5"	1'-2 1/2"

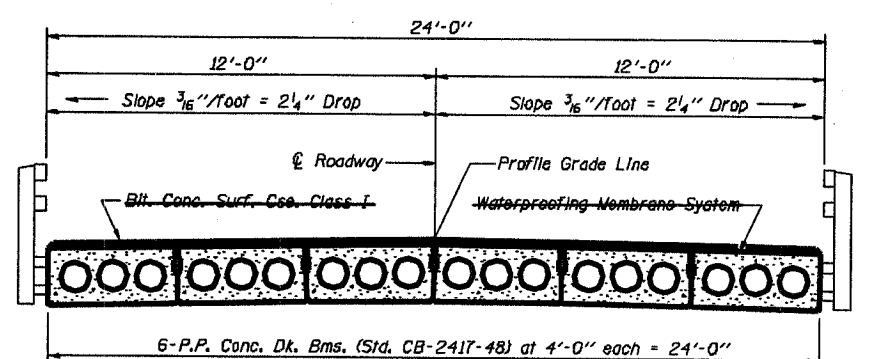
**1/2" FABRIC BRG. PAD DETAILS**



**PROFILE OF OVERLAY**



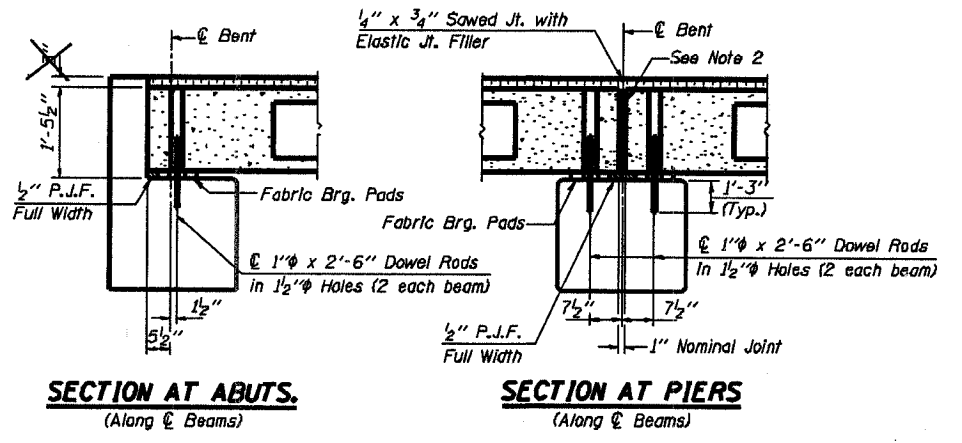
**CROSS SECTION**



**CROSS SECTION**

- NOTES**
1. After beams have been erected, holes shall be drilled into substructure and anchor dowels placed. Dowel holes shall be filled with non-shrink grout to top of beam and allowed to cure min. 24 hrs. prior to grouting the shear keys.
  2. Nominal 1" joint at Pler shall be filled with non-shrink grout.
  3. Longitudinal keys shall be grouted.

Illinois Department of Transportation  
 PASSED NOVEMBER 1, 1995  
 Engineer of Bridge Design  
 APPROVED NOVEMBER 1, 1995  
 Engineer of Bridges and Structures



**SECTION AT ABUTS.**  
(Along & Beams)

**SECTION AT PIERS**  
(Along & Beams)

**QUANTITIES FOR ONE SPAN**

P.P. Conc. Dk. Bm. 17" Dp.	720 Sq. Ft.
Steel Railing	60 Ft.
Bit. Conc. Surf. Cse. Class I	12.0 Tons
Waterproofing Membrane System	60.0 Sq. Yds.

**P.P.C. DECK BEAM SUPERSTRUCTURE**  
 24' RDWY. 17" BMS. 30' SPAN 0° SKEW  
 STANDARD CS-2417-30