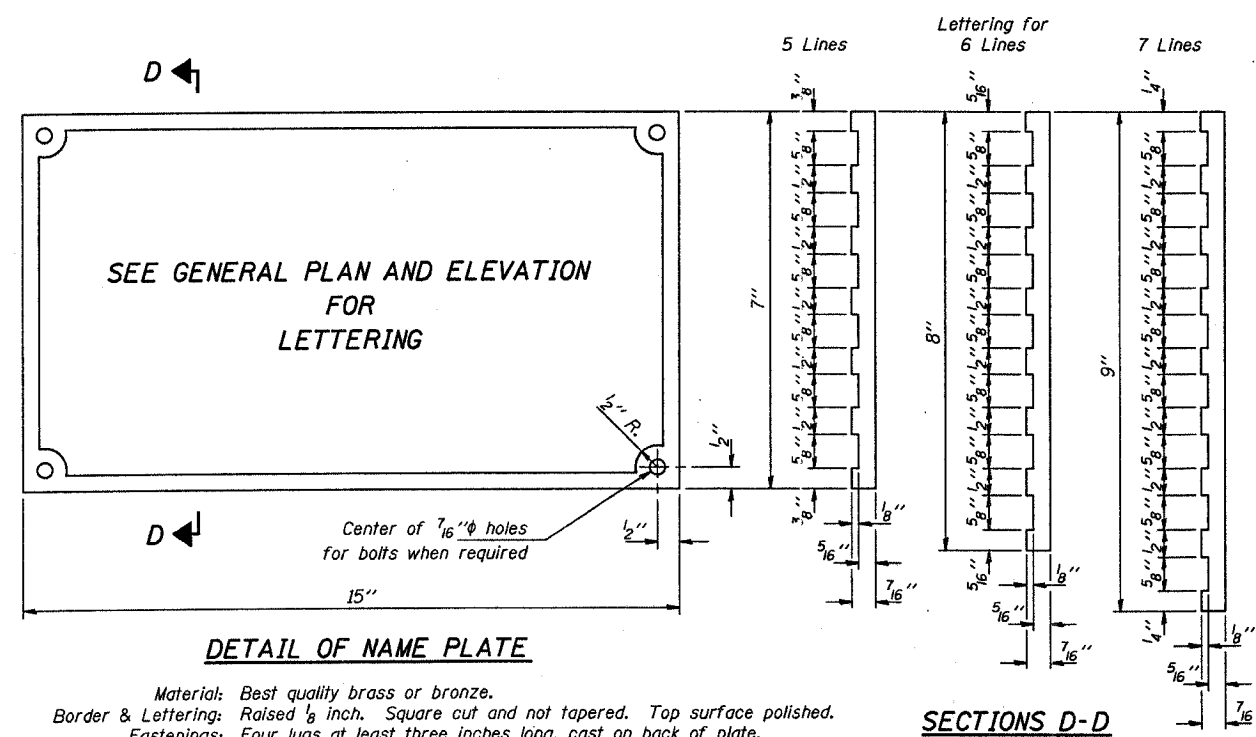


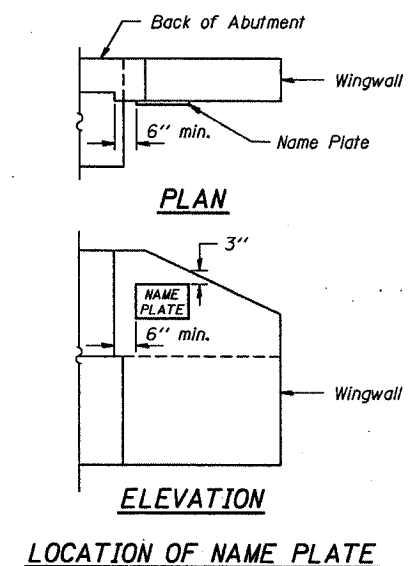
NO.	SECTION	COUNTY	TOTAL SHEETS	SHEET NO.
T.R. 54	02-00118-00-BR	FAYETTE	14	12
FED. ROAD DIST. NO. 7		BLINDS	FED. AID PROJECT NO.	
CONTRACT NO. 95429				



DETAIL OF NAME PLATE

Material: Best quality brass or bronze.
 Border & Lettering: Raised $\frac{1}{8}$ inch. Square cut and not tapered. Top surface polished.
 Fastenings: Four lugs at least three inches long, cast on back of plate.

SECTIONS D-D



LOCATION OF NAME PLATE

Illinois Department of Transportation

PASSED November 1, 1995
Gregory J. Kasper
 Engineer of Bridge Design

APPROVED November 1, 1995
Ralph E. Anderson
 Engineer of Bridges and Structures

ISSUED 7-1-95

NAME PLATE
STANDARD CN