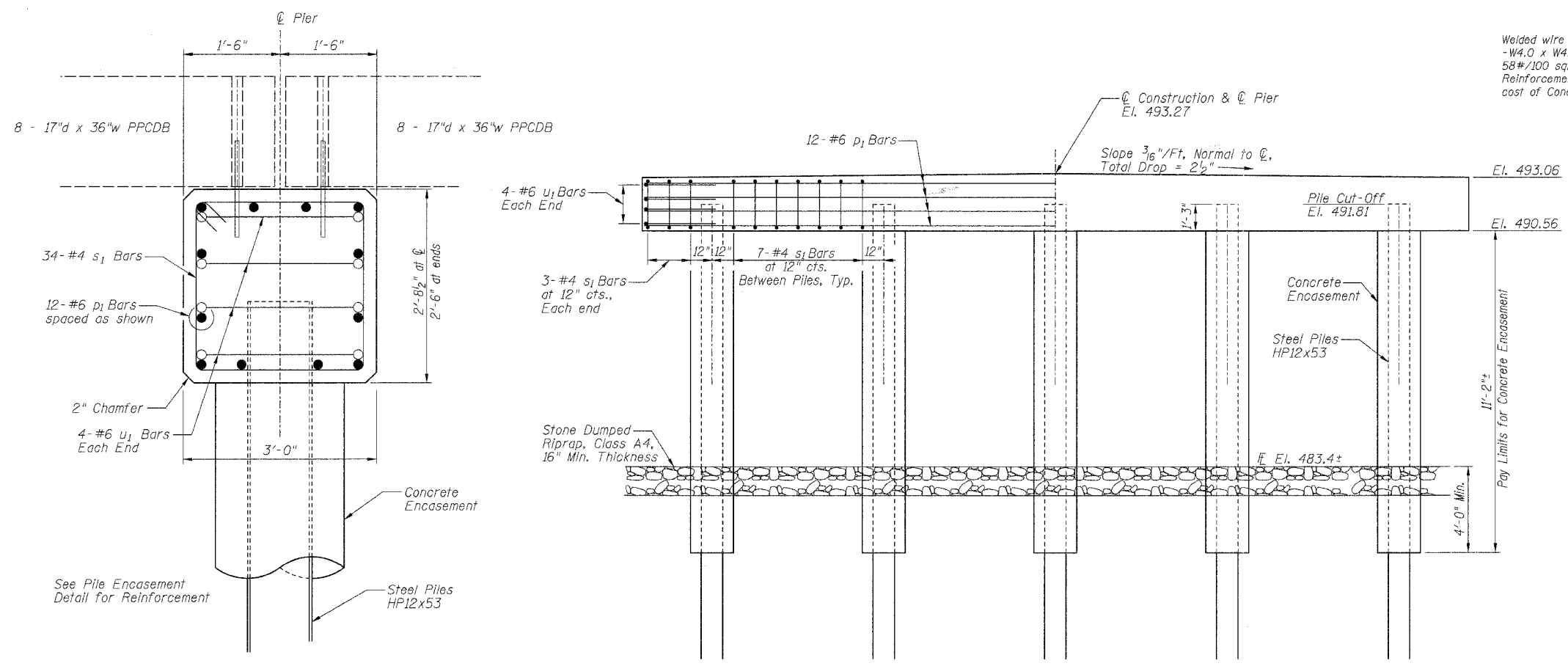


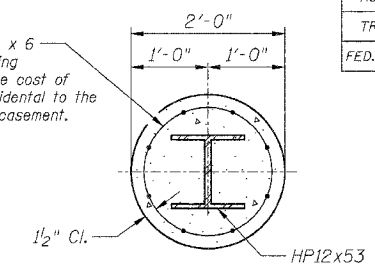
ROUTE	SECTION	COUNTY	TOTAL SHEETS	SHEET NO.
TR 22	04-15109-00-BR	MARION	10	10
FED. ROAD DIST. NO. 7	ILLINOIS	FED. AID PROJECT		
CONTRACT NO. 95430				



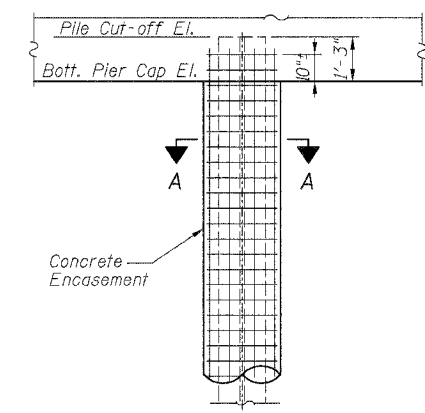
SECTION THRU PIER

ELEVATION

Welded wire fabric 6 x 6 - W4.0 x W4.0 weighing 58#/100 sq. ft. The cost of Reinforcement is incidental to the cost of Concrete Encasement.



SECTION A-A



PILE ENCASEMENT DETAIL

PILE DATA

Type:  
Pier No. 1 Steel HP12x53  
Pier No. 2 Steel HP12x53

Estimated Capacity:  
Pier No. 1 69 Ton  
Pier No. 2 69 Ton

Estimated Length:  
Pier No. 1 54 Foot  
Pier No. 2 54 Foot

Number Required:  
Pier No. 1 5  
Pier No. 2 5

Total Estimated Length:  
Steel HP12x53 540 Foot

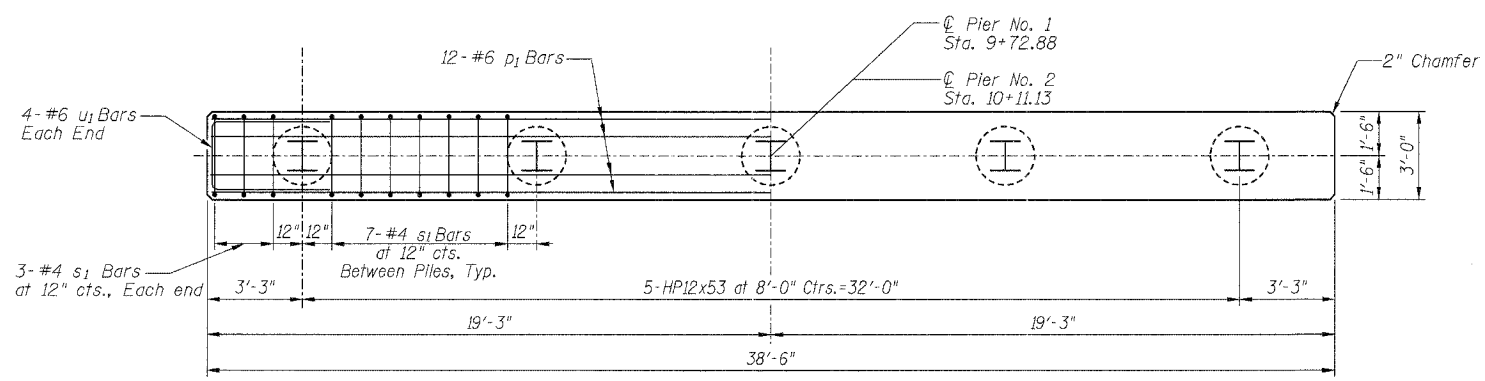
Drive to 69 Ton capacity per pile

BILL OF MATERIALS ONE PIER

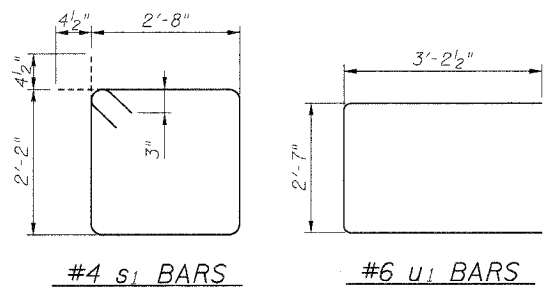
Bar	No.	Size	Length	Shape
p <sub>1</sub>	12	#6	38'-2"	—
s <sub>1</sub>	34	#4	10'-5"	□
u <sub>1</sub>	8	#6	9'-0"	□
Concrete Structures			Cu. Yd.	11.1
Concrete Encasement			Cu. Yd.	6.5
Reinforcement Bars			Pound	1030

GENERAL NOTES

- All exposed edges shall have 2" chamfer, unless otherwise noted.
- All clearances between rebar and form surface shall be 2", unless otherwise noted.
- Space reinforcement in cap to miss PPCDB dowel rods.



PLAN



PIER DETAILS  
PROPOSED BRIDGE CARRYING  
TR 22 OVER LOST CREEK  
SECTION 04-15109-00-BR  
MARION COUNTY, ILLINOIS

03/15/2005