

ROUTE	SECTION	COUNTY	TOT. SHTS.	SHT.
C.H. 27	03-00180-00-BR	JEFFERSON	B	1
JEFFERSON CO. ROAD DISTRICT				

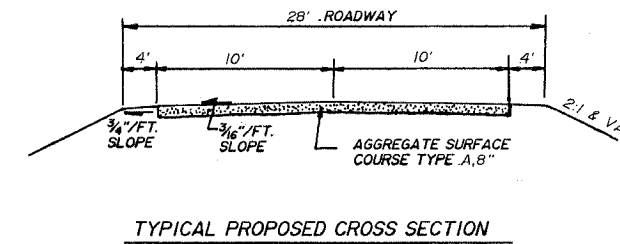
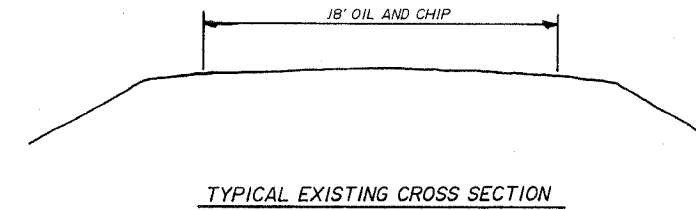
INDEX OF SHEETS

1. COVER SHEET- INDEX OF SHEETS, TYPICAL EXISTING AND PROPOSED CROSS-SECTIONS, SUMMARY OF QUANTITIES, LOCATION MAP, GENERAL NOTES
2. PLAN AND PROFILE
3. GENERAL PLAN AND ELEVATION
4. FOUNDATION PLAN AND DETAILS
5. END ELEVATION AND DETAILS
6. BRIDGE PLAN AND DETAILS
7. MANUFACTURE AND INSTALLATION DETAILS
8. CROSS-SECTIONS

STATE OF ILLINOIS
DEPARTMENT OF TRANSPORTATION

PLANS FOR PROPOSED
BRIDGE REPLACEMENT AND REHABILITATION PROGRAM

CONTRACT 95432



STANDARDS

1. 0000001-04
2. 515001-02
3. 630001-05
4. 631011-02
5. 635006-02
6. 701006-02
7. 702001-05
8. BLR 21-6
9. BLR 23-1

GENERAL NOTES

THIS SECTION SHALL BE CONSTRUCTED IN ACCORDANCE WITH THE PLANS, STANDARD SPECIFICATIONS FOR ROAD AND BRIDGE CONSTRUCTION ADOPTED JANUARY 1, 2001 BY THE ILLINOIS DEPARTMENT OF TRANSPORTATION, ALL APPLICABLE SUPPLEMENTAL SPECIFICATIONS AND RECURRING SPECIAL PROVISIONS, AND THE SPECIAL PROVISIONS FOR THIS PROJECT.

PLAN ELEVATIONS ARE U.S.G.S. DATUM AND ARE THE ELEVATIONS OF THE FINISHED SURFACE

ANY EXCAVATION DEEMED SUITABLE FOR USE BY THE ENGINEER SHALL BE USED IN THE EMBANKMENT.

THE CONTRACTOR SHALL SALVAGE FROM THE EXISTING STRUCTURE ANY MATERIALS DEEMED SALVAGEABLE BY THE ENGINEER AND SHALL STORE SAME ON THE RIGHT-OF-WAY FOR LATER REMOVAL BY THE JEFFERSON COUNTY HIGHWAY DEPARTMENT.

THE WORK IN THIS SECTION SHALL CONSIST OF THE CONSTRUCTION OF A THREE SIDED PRECAST CONCRETE STRUCTURE AND ANY AND ALL INCIDENTAL WORK NECESSARY TO COMPLETE THE SECTION.

SECTION 03-00180-00-BR
C.H. 27 JEFFERSON CO.
PROJECT NO. BROS-081(45)
JOB NO. C-97-035-05

J.U.L.I.E.

1-800-892-0123

CONTRACTOR SHALL FIELD VERIFY THE LOCATION OF ALL UTILITIES PRIOR TO CONSTRUCTION

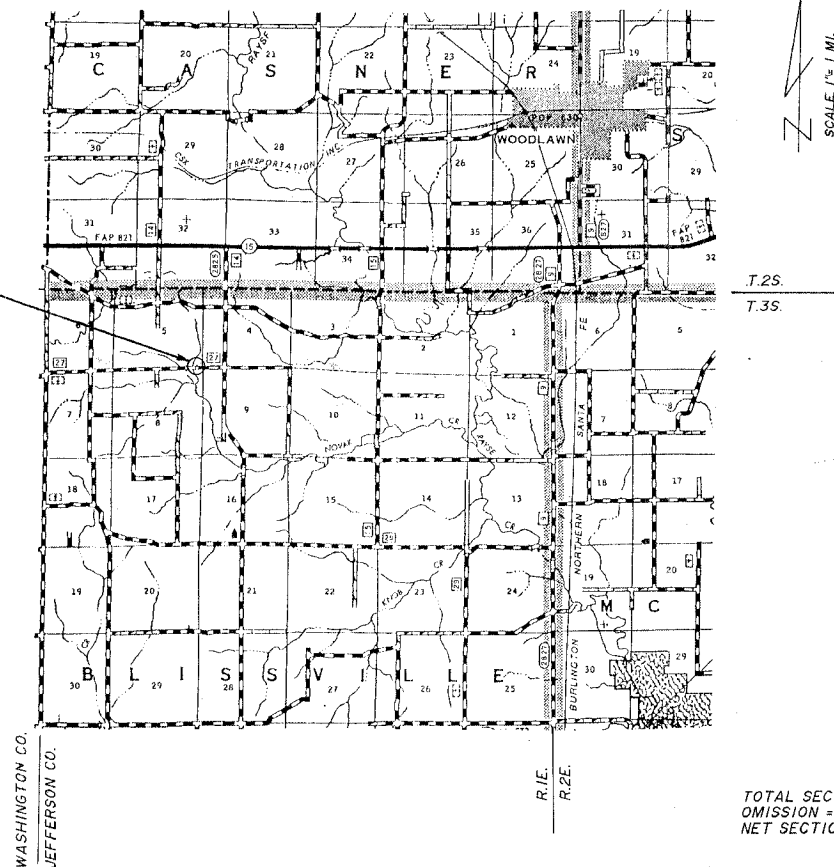
SUMMARY OF QUANTITIES

Quantity	Unit	Item	Code Number
50	FOOT	THREE SIDED PRECAST CONCRETE STRUCTURE	XK003551
68	CU. YD.	CONTROLLED LOW-STRENGTH MATERIAL	Z0013825
535	CU. YD.	TURNISHED EXCAVATION	20402800
80	TON	STONE DUMPED REEAD, CLASS M	28100807
1	EACH	REMOVE EXISTING STRUCTURES	S0100100
561	CU. YD.	STRUCTURE EXCAVATION (SPECIAL)	S0200200
132.5	FOOT	STEEL PLATE BEAM GUARDRAIL, TYPE A	63000300
1	EACH	TRAFFIC BARRIER TERMINAL, TYPE 1, SPECIAL (TANGENT)	63100167
2	EACH	TRAFFIC BARRIER TERMINAL, TYPE 2	63100045
62	TON	AGGREGATE SURFACE COURSE, TYPE A	40200100
1	EACH	NAME PLATES	51500100
1	EACH	TERMINAL MARKER DIRECTLY APPLIED	78201000
1	EACH	TRAFFIC BARRIER TERMINAL, TYPE 1	LR631020

SECTION 03-00180-00-BR
BEGINS STA. 8+50
ENDS STA. 10+37.50

EXIST. STR. # 041-3056
PROP. STR. # 041-3662

COLLECTOR
275/400 ADT
40 M.P.H.



SCALE 1" = 1 MI.

T.2S.
T.3S.

TOTAL SECTION LENGTH=187.5±0.035 MI.
OMISSION = 0'
NET SECTION LENGTH=187.5±0.035 MI.

THE ACCEPTANCE OF THIS PROJECT IS BASED ON THE MINIMUM DESIGN CRITERIA FOR A FEDERAL AID SECONDARY IMPROVEMENT ON THE COUNTY HIGHWAY SYSTEM.

Maureen D. Kastl
DIST. ENGR. LOCAL RDS & STS.

THESE PLANS WERE PREPARED BY ME OR A FULL TIME MEMBER OF MY STAFF WORKING UNDER MY PERSONAL SUPERVISION.

John S. Schaeke
COUNTY ENGINEER

750 OLD FAIRFIELD RD.
MT. VERNON, IL
618-244-8031
LIC. EXP. 11-30-05



STATE OF ILLINOIS
DEPARTMENT OF TRANSPORTATION

PASSED 4/12 2005
Maureen D. Kastl
DISTRICT ENGR., LOCAL ROADS & STREETS

APPROVED 4/12 2005
Christine M. Reed
CHRISTINE M. REED, P.E.
DEPUTY DIRECTOR OF HIGHWAYS
REGION FOUR ENGINEER