

**THOUVENOT,
WADE &
MOERCHEN, INC.**
ENGINEERS • SURVEYORS • PLANNERS



- CORPORATE OFFICE**
4940 OLD COLLINSVILLE RD.
SWANSEA, ILLINOIS 62226
TEL (618) 624-4488
FAX (618) 624-6688
corp@twm-inc.com
- WATERLOO OFFICE**
118 EAST THIRD STREET
WATERLOO, ILLINOIS 62298
TEL (618) 939-5050
FAX (618) 939-3938
waterloo@twm-inc.com
- ST. LOUIS OFFICE**
1001 CRAIG ROAD, SUITE 260
ST. LOUIS, MISSOURI 63146
TEL (314) 236-5052
FAX (314) 872-2194
stlouis@twm-inc.com

PROFESSIONAL REGISTRATIONS	LICENSE NO.
ILLINOIS PROFESSIONAL DESIGN FIRM	184-00120
PROFESSIONAL ENGINEERING CORP.	62-025370
PROFESSIONAL STRUCTURAL ENGR. CORP.	81-005202
ILLINOIS PROF. LAND SURVEYING CORP.	048-000029
MISSOURI PROFESSIONAL ENGR. CORP.	MC 001528
MISSOURI LAND SURVEYING CORP.	MC 000346

SEAL

Renewal Date: _____
Signature Date: _____

STATEMENT OF RESPONSIBILITY
I hereby certify that the document herein to be authenticated by my seal is restricted to this sheet, and I hereby disclaim any responsibility for all other drawings, specifications, estimates, reports or other documents or instruments relating to or intended to be utilized for any other part of the architectural, engineering or survey project.

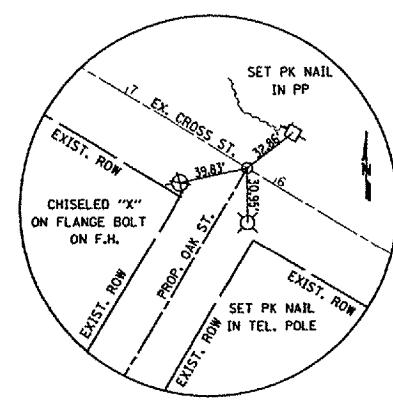
TITLE: **ALIGNMENT TIES**

PROJECT: **BIKE TRAIL
VILLAGE OF SHILOH
ST. CLAIR COUNTY, ILLINOIS**

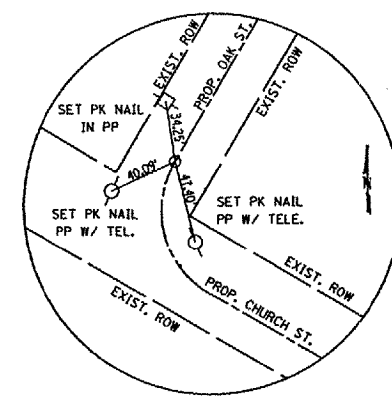
REV.	DATE	DESCRIPTION
△	/ /	
△	/ /	

DRAWN BY: _____	8 OF 37 SHEETS
DESIGNED BY: _____	
CHECKED BY: _____	
CONTRACT NUMBER: _____	
PROJECT NUMBER: 99761	

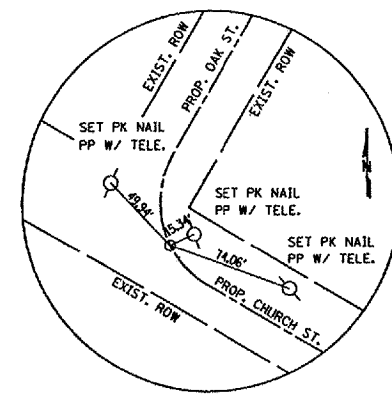
ISSUED FOR REVIEW ISSUED FOR BIDDING
 ISSUED FOR CONSTR. RECORD DRAWING



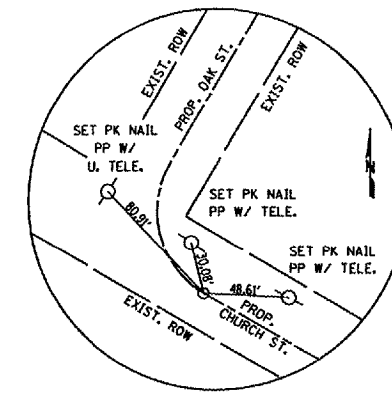
TIE POINT
P.K. NAIL @ P.O.I.
STA. 20+00.00



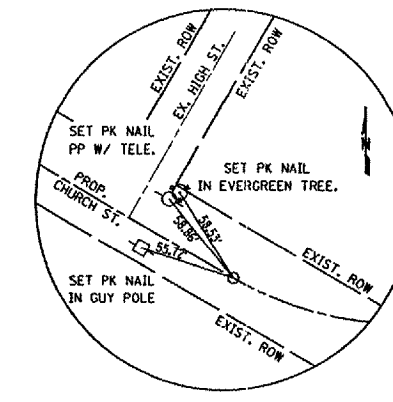
TIE POINT
P.K. NAIL @ PC
STA. 26+72.85



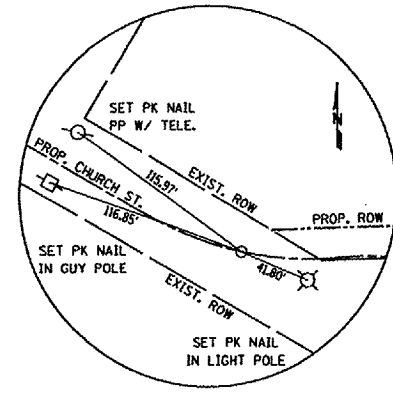
TIE POINT
P.K. NAIL @ PT
STA. 27+27.85



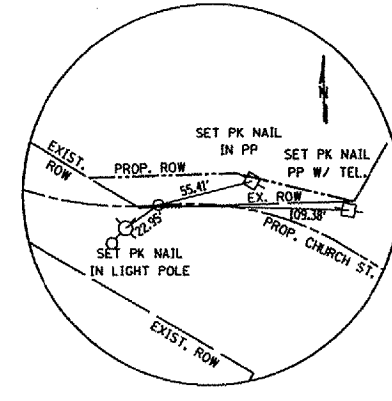
TIE POINT
P.K. NAIL @ PT
STA. 27+59.24



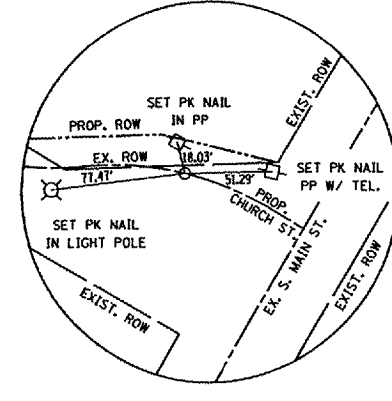
TIE POINT
P.K. NAIL @ PC
STA. 30+83.18



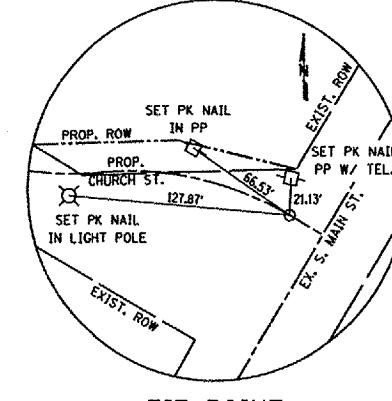
TIE POINT
P.K. NAIL @ P.I.
STA. 31+44.60



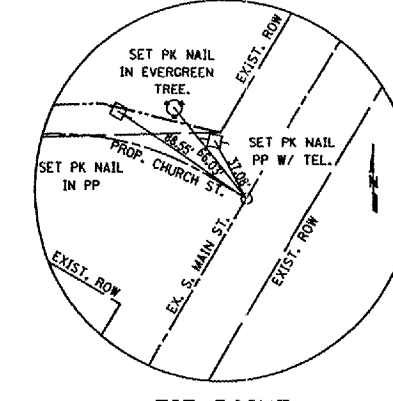
TIE POINT
P.K. NAIL @ PT
STA. 32+02.19



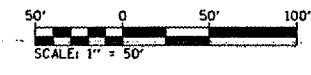
TIE POINT
P.K. NAIL @ PT
STA. 32+60.63



TIE POINT
P.K. NAIL @ PT
STA. 33+15.20



TIE POINT
P.K. NAIL @ P.O.I.
STA. 33+37.26



PLAN

REVIEWED	DATE
DESIGNED	
CHECKED	
DATE	

PROFILE

REVIEWED	DATE
DESIGNED	
CHECKED	
DATE	