
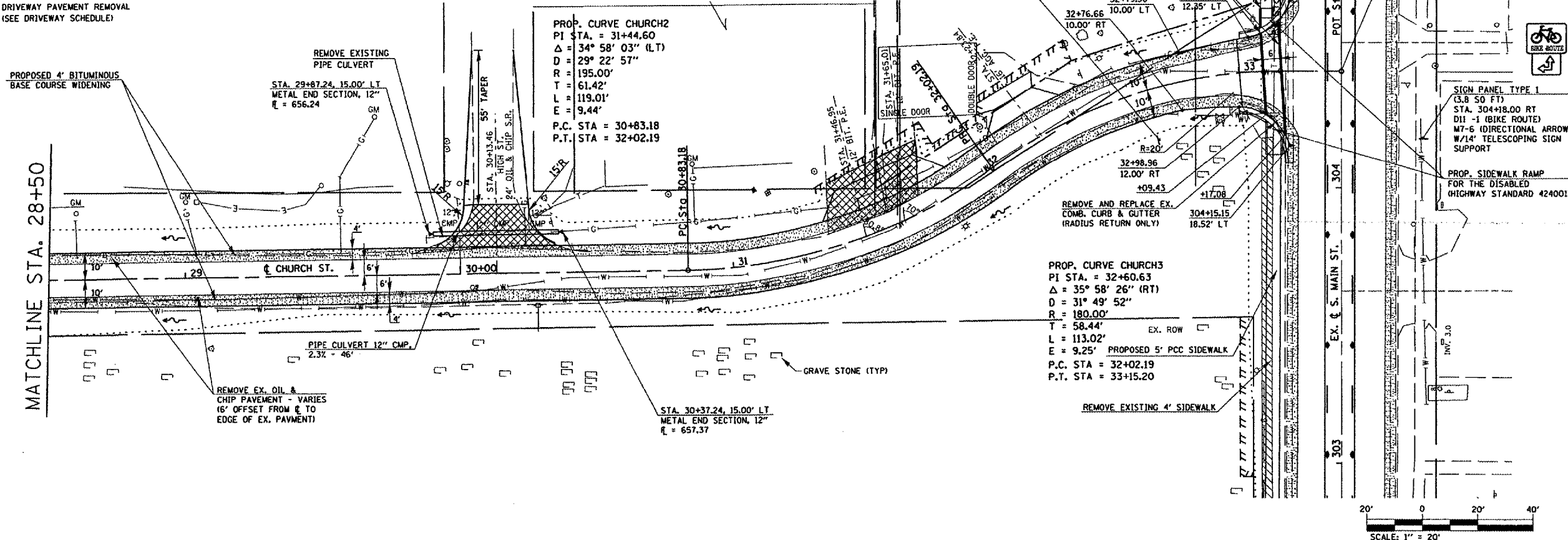


CONTRACT NO. 97245

-  BICYCLE ROUTE
-  SIDEWALK REMOVAL (SEE CURB & GUTTER / SIDEWALK SCHEDULE)
-  DRIVEWAY PAVEMENT REMOVAL (SEE DRIVEWAY SCHEDULE)



THOUVENOT, WADE & MOERCHEN, INC.
ENGINEERS & SURVEYORS & PLANNERS



- CORPORATE OFFICE**
4940 OLD COLLINSVILLE RD.
SWANSEA, ILLINOIS 62226
TEL (618) 624-4888
FAX (618) 624-6688
corp@twm-inc.com
- WATERLOO OFFICE**
118 EAST THIRD STREET
WATERLOO, ILLINOIS 62298
TEL (618) 939-5050
FAX (618) 939-3938
waterloo@twm-inc.com
- ST. LOUIS OFFICE**
1001 CRAIG ROAD, SUITE 260
ST. LOUIS, MISSOURI 63146
TEL (314) 236-5052
FAX (314) 872-2194
stlouisetwm-inc.com

PROFESSIONAL REGISTRATIONS	LICENSE NO.
ILLINOIS PROFESSIONAL DESIGN FIRM	184-001220
PROFESSIONAL ENGINEERING CORP.	62-030370
PROFESSIONAL STRUCTURAL ENGR. CORP.	81-005202
ILLINOIS PROF. LAND SURVEYING CORP.	048-000029
MISSOURI PROFESSIONAL ENGR. CORP.	HC 001528
MISSOURI LAND SURVEYING CORP.	HC 000346

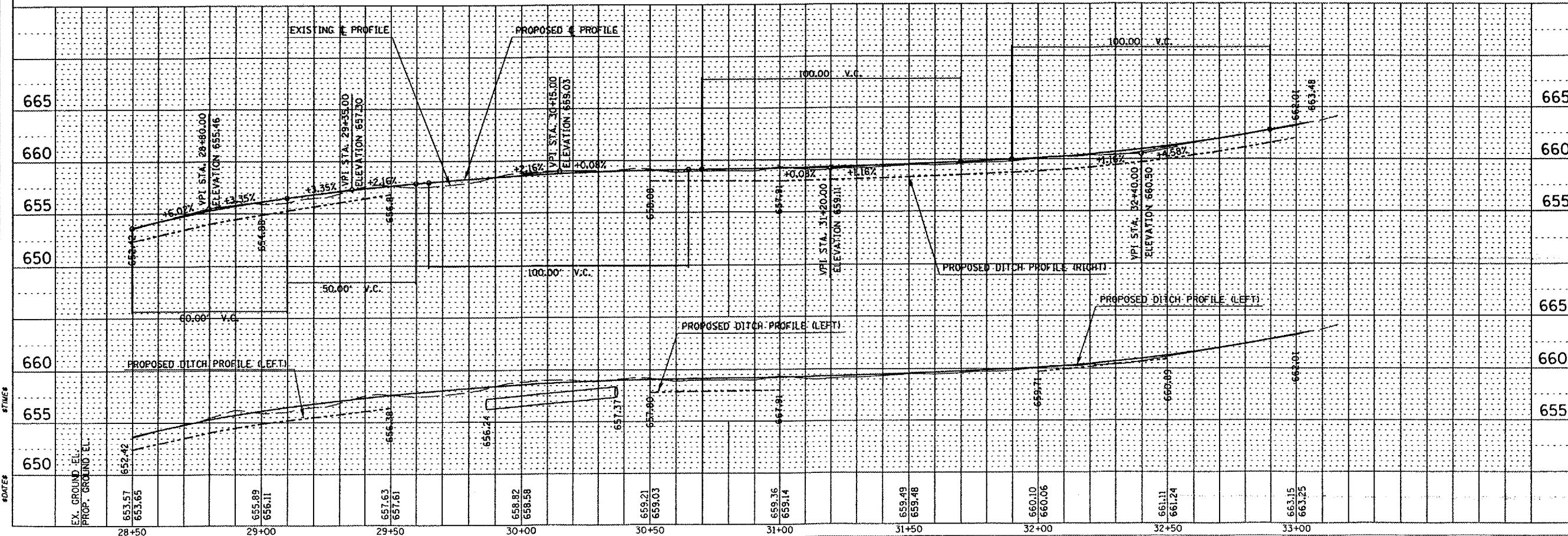
SEAL

Based Date
Signature Date

STATEMENT OF RESPONSIBILITY
I hereby certify that the document herein to be authenticated by my seal is restricted to this sheet, and I hereby disclaim any responsibility for all other drawings, specifications, estimates, reports or other documents or instruments relating to or intended to be utilized for any other part of the architectural, engineering or survey project.

PLAN	DATE	BY
REVISED		
NOTE BOOK		
NO.		

PROFILE	DATE	BY
REVISED		
NOTE BOOK		
NO.		



PLAN AND PROFILE SHEETS
CHURCH ST.

BIKE TRAIL
VILLAGE OF SHILOH
ST. CLAIR COUNTY, ILLINOIS

REV.	DATE	DESCRIPTION
△	/ /	
△	/ /	

DRAWN BY	SGR	SHEET
DESIGNED BY		11
CHECKED BY		
CONTRACT NUMBER		
PROJECT NUMBER	99151	

OP 27 SHEETS

ISSUED FOR REVIEW ISSUED FOR BIDDING
 ISSUED FOR CONSTR. RECORD DRAWING