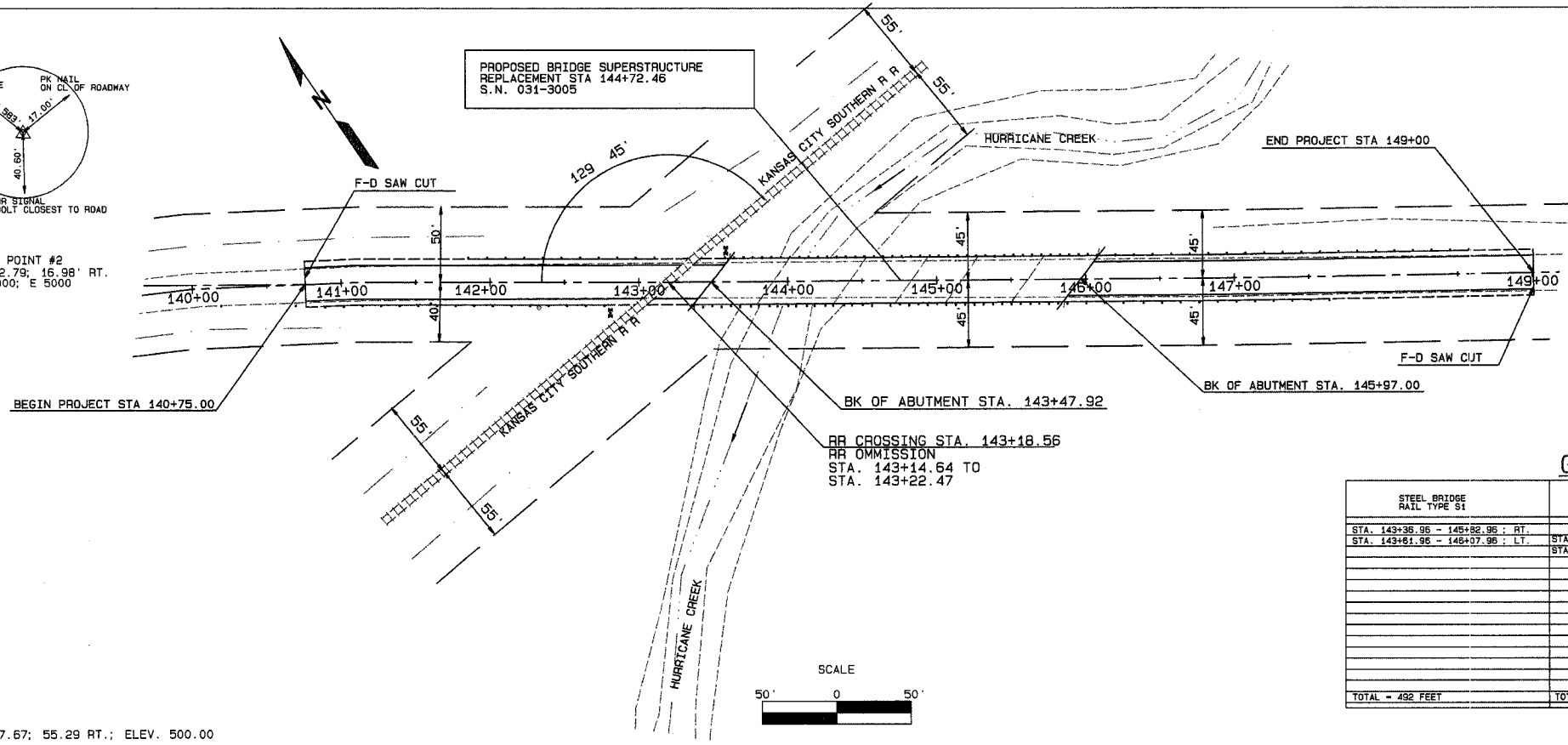


TIE POINT #1
STA 138+85.65; 0.02' RT.
N 5342.05' E 4946.15

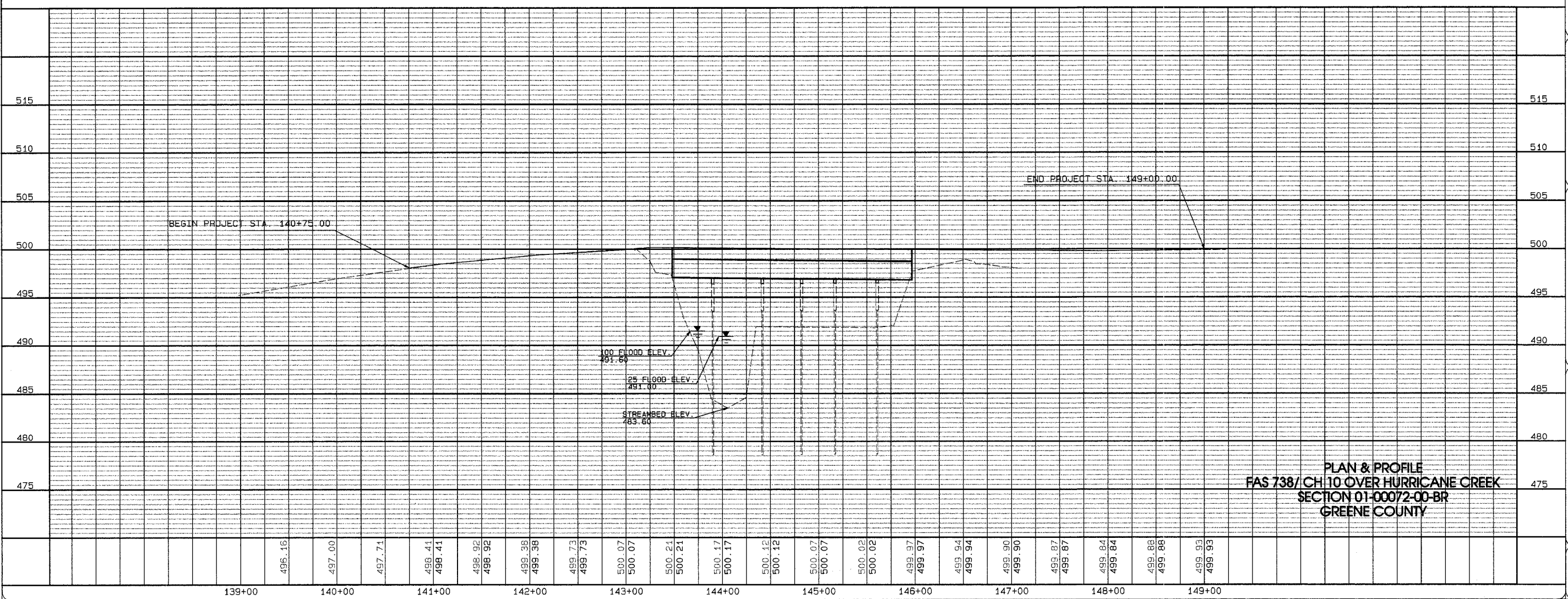
TIE POINT #2
STA 142+32.79; 16.98' RT.
N 5000; E 5000



GUARD RAIL SCHEDULE

STEEL BRIDGE RAIL TYPE S1	T.B.T. TYPE 5A	S.P.B. GUARDRAIL TYPE A	T.B.T. TYPE 1 SPECIAL (TANGENT)
STA. 143+36.96 - 145+82.96; RT.	STA. 145+82.96 - 145+96.21; RT.	STA. 141+38.85 - 142+26.35; RT.	
STA. 143+61.96 - 148+07.96; LT.	STA. 145+07.96 - 146+21.21; LT.	STA. 142+35.03 - 142+59.03; LT.	
		STA. 145+96.21 - 147+08.71; RT.	
		STA. 146+21.21 - 148+08.71; LT.	
			STA. 140+88.85 - 141+38.85; RT.
			STA. 141+85.03 - 142+35.03; LT.
			STA. 142+26.35 - 142+76.35; RT.
			STA. 142+60.03 - 143+10.03; LT.
			STA. 147+08.71 - 147+58.71; RT.
			STA. 148+08.71 - 148+58.71; LT.
TOTAL = 492 FEET	TOTAL = 2 EACH	TOTAL = 412.5 FEET	TOTAL = 6 EACH

B.M. #1 500 NAIL IN POWER POLE STA. 142+37.67; 55.29 RT.; ELEV. 500.00



**PLAN & PROFILE
FAS 738/CH 10 OVER HURRICANE CREEK
SECTION 01-00072-00-BR
GREENE COUNTY**

REVISION
 PROJECT NUMBER: DAVID M. MARTH
 DESIGNED BY: DAVID M. MARTH
 CHECKED BY: DAVID M. MARTH
 DRAWN BY: DAVID M. MARTH
 APPROVED BY: DAVID M. MARTH
**GREENE COUNTY
HIGHWAY DEPARTMENT**
SECTION 01-00072-00-BR
 ACCOUNT: BRPP BRIDGE
 DATE: JANUARY 31, 2005
 SHEET 04 OF 28