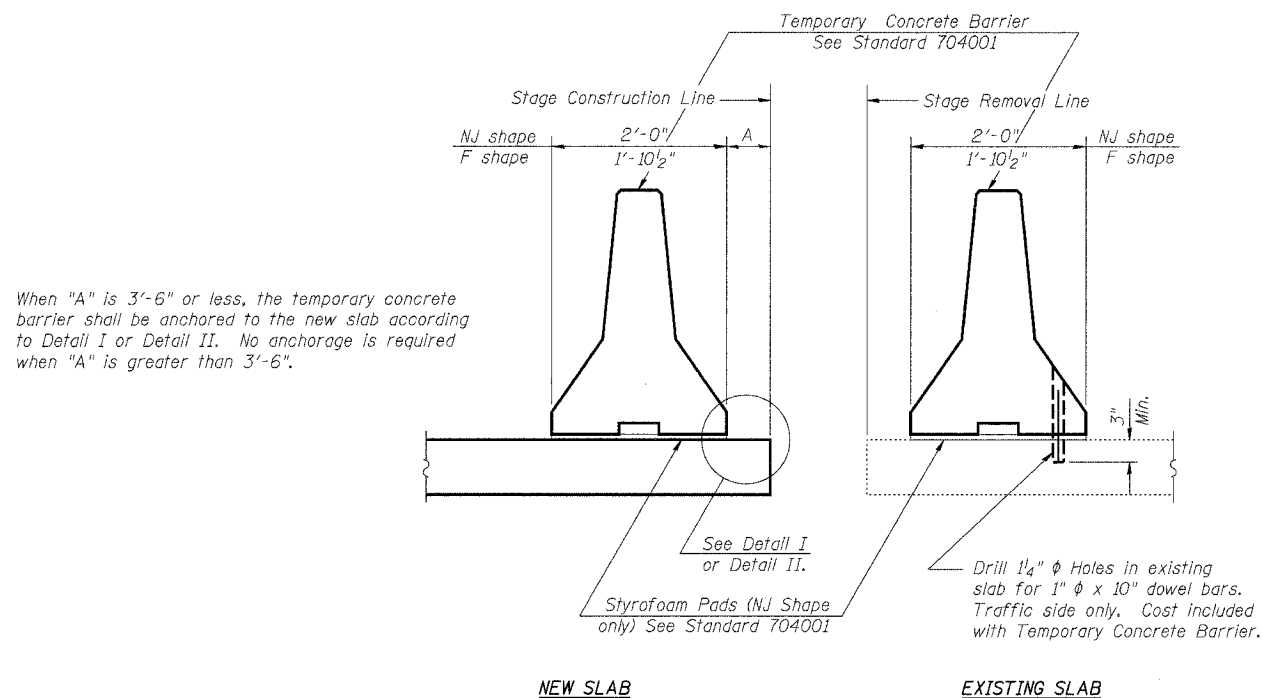


STATE OF ILLINOIS
DEPARTMENT OF TRANSPORTATION

ROUTE NO.	SECTION	COUNTY	TOTAL SHEETS	SHEET NO.
F.A.P. 322	*	UNION	39	21
FED. ROAD DIST. NO. 7	ILLINOIS	FED. AID PROJECT-		

* (11-IVB)-1 CONTRACT NO. 98488

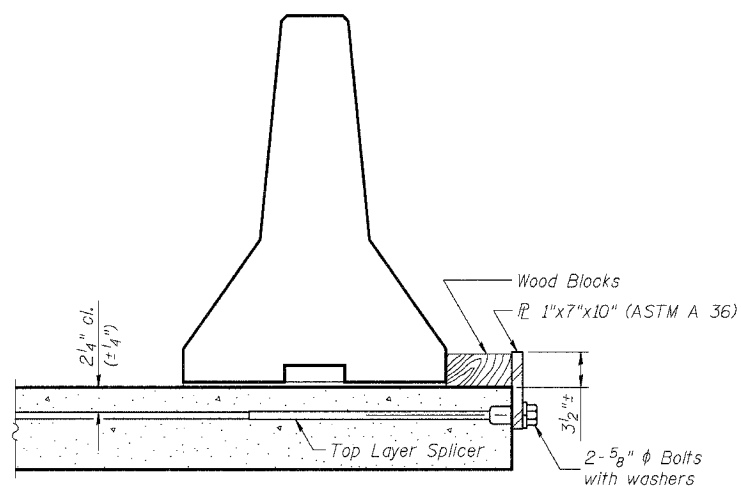
SHEET NO. 4
22 SHEETS



SECTIONS THRU SLAB

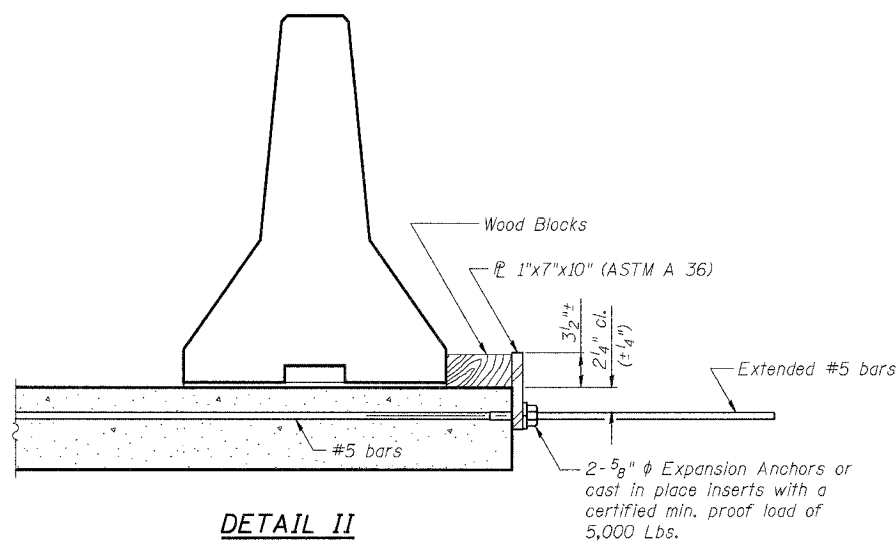
NOTES

- Detail I - With Bar Splicer or Couplers:
Connect one (1) 1"x7"x10" steel \bar{L} to the top layer of couplers with 2- $\frac{5}{8}$ " ϕ bolts screwed to coupler at approximate \bar{C} of each barrier panel.
- Detail II - With Extended Reinforcement Bars:
Connect one (1) 1"x7"x10" steel \bar{L} to the concrete slab with 2- $\frac{5}{8}$ " ϕ Expansion Anchors or cast in place inserts spaced between the top layer of reinforcement at approximate \bar{C} of each barrier panel.
- Cost of anchorage is included with Temporary Concrete Barrier.



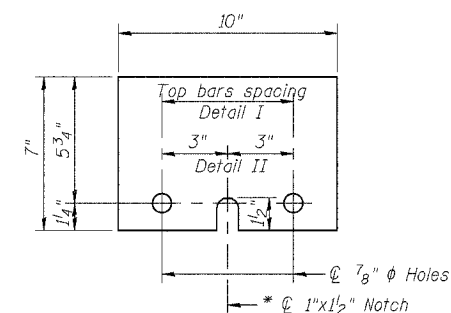
DETAIL I

The 1"x7"x10" Plate shall not be removed until Stage II Construction forms and reinforcement bars are in place.



DETAIL II

The 1"x7"x10" Plate shall not be removed until Stage II Construction forms and all reinforcement bars are in place and the concrete is ready to be placed.



1"x7"x10"

* Required only with Detail II

DESIGNED	GLH
CHECKED	TML
DRAWN	RJN
CHECKED	GLH

R-27 9-01-03

TEMPORARY CONCRETE BARRIER
FOR STAGE CONSTRUCTION
U.S. ROUTE 51 OVER TRIBUTARY TO
DRURY CREEK AND CN/IC RAILROAD
FAP 322 - SECTION (11-IVB)-1
UNION COUNTY
STATION 583+74.84
STRUCTURE NO. 091-0073

02/15/2005