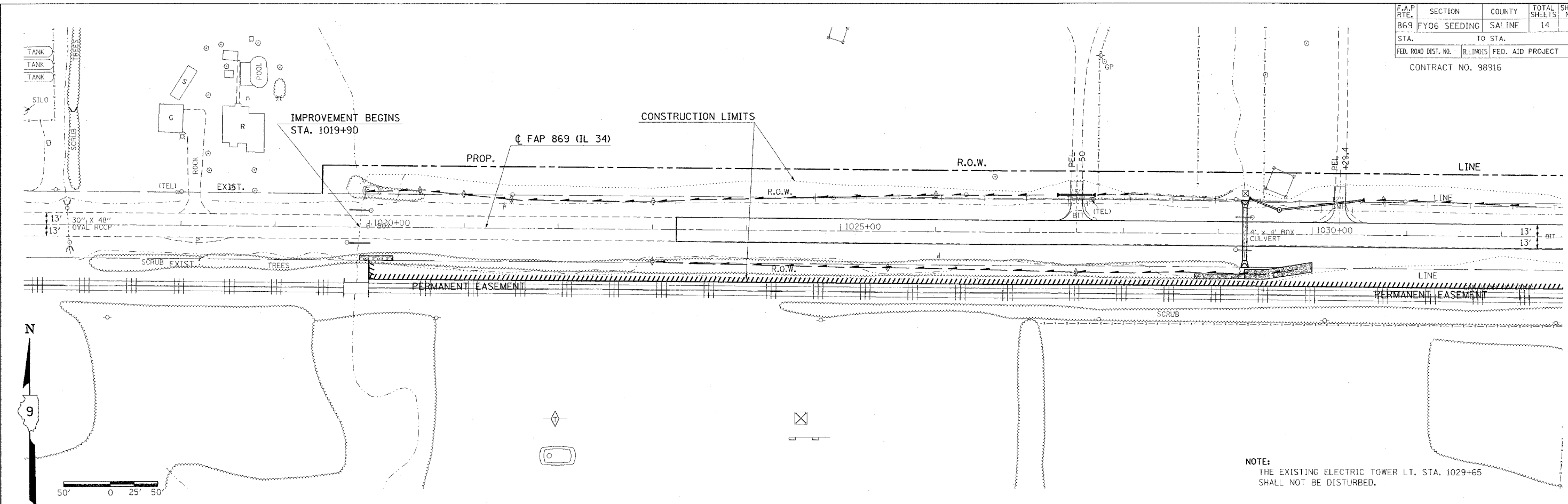
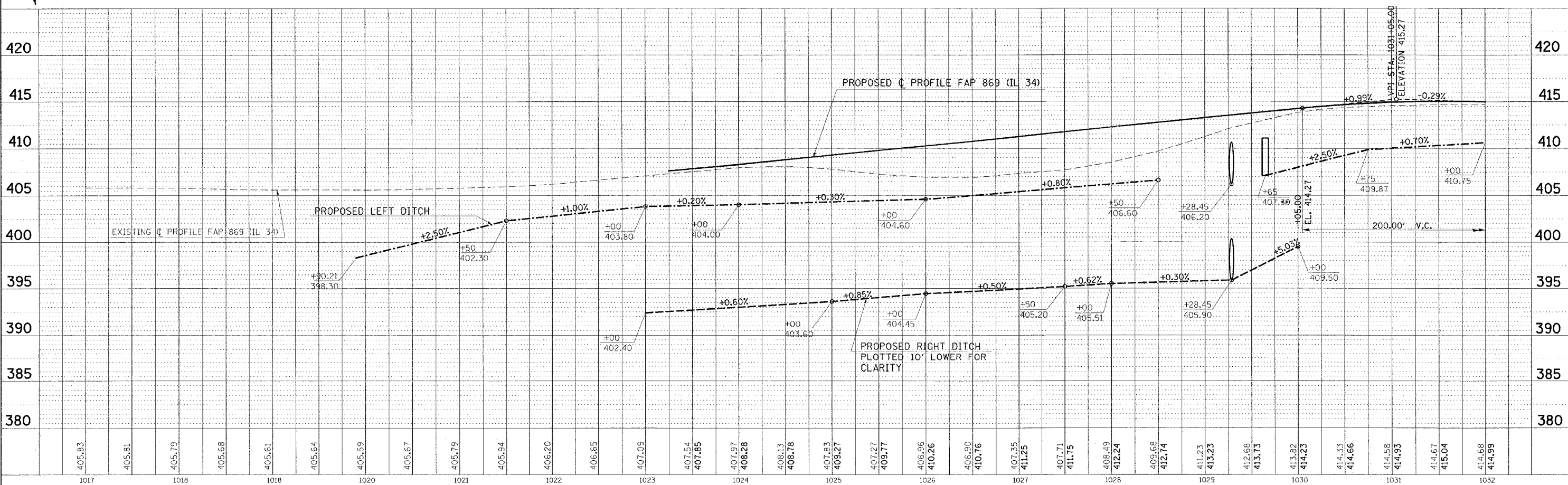


F.A.P. RTE.	SECTION	COUNTY	TOTAL SHEETS	SHEET NO.
869	FY06 SEEDING	SALINE	14	9
STA.	TO STA.			
FED. ROAD DIST. NO.	ILLINOIS	FED. AID PROJECT		
CONTRACT NO. 98916				



NOTE:
THE EXISTING ELECTRIC TOWER LT. STA. 1029+65
SHALL NOT BE DISTURBED.



DATE	BY	REVISION

DATE	BY	REVISION

FEBRUARY 3, 2005 AFTERNOON
D:\02305\0502305p2.dgn

PLAN PROFILE SHEET STA. 1017+00 TO STA. 1032+00