

F.A.P. RTE.	SECTION	COUNTY	TOTAL SHEETS	SHEET NO.
869	FY06 SEEDING	SALINE	14	1

STATE OF ILLINOIS  
DEPARTMENT OF TRANSPORTATION  
DIVISION OF HIGHWAYS

**PROPOSED  
HIGHWAY PLANS**

ROUTE: FAP 869 (IL 34)  
SECTION: FY06 SEEDING  
COUNTY: SALINE  
C-99-024-05

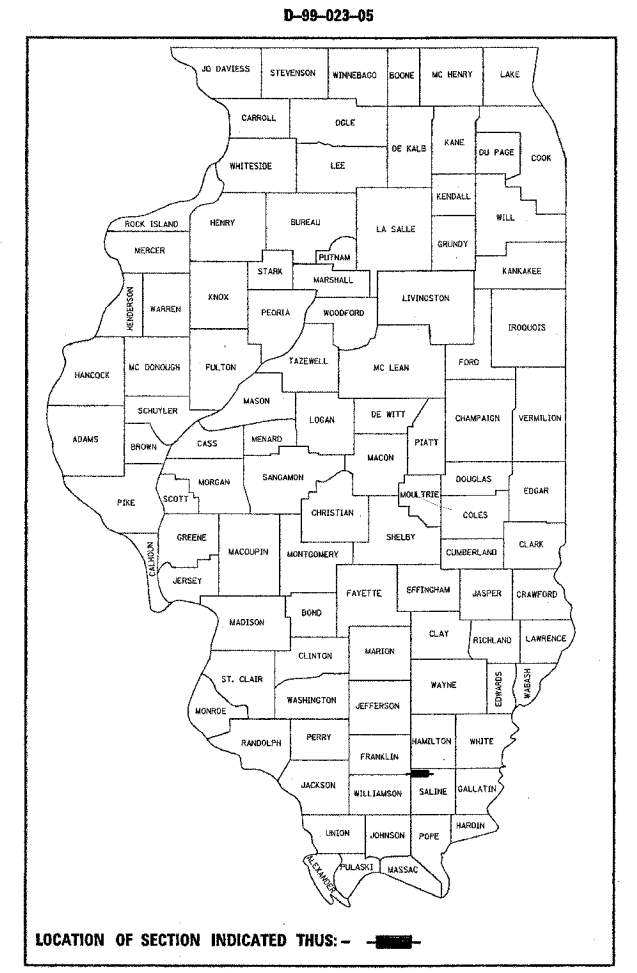
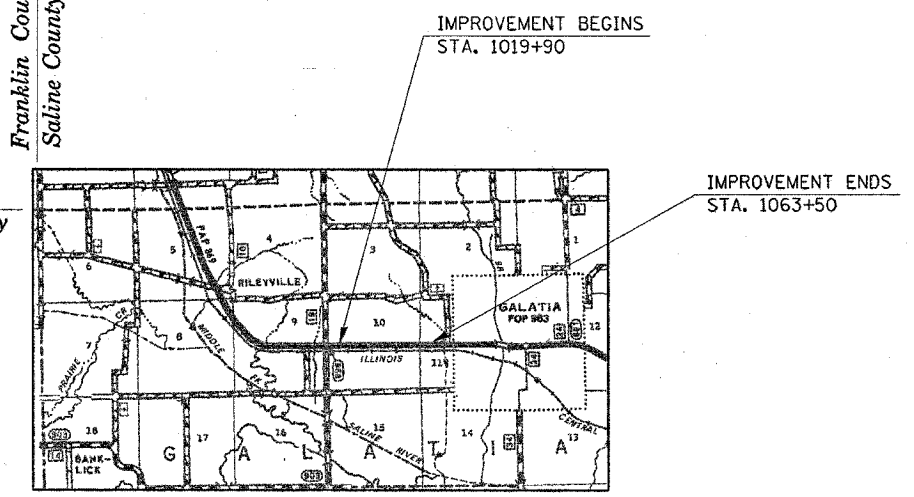
FOR INDEX OF SHEETS, SEE SHEET NO. 2  
FOR SUMMARY OF QUANTITIES, SEE SHEET NO. 5

STATION EQUATIONS:  
NONE

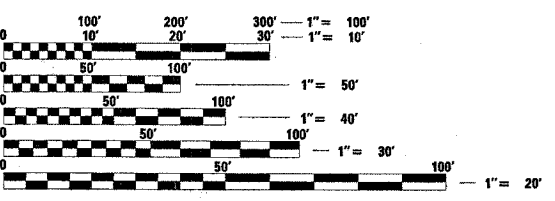
2004 TRAFFIC DATA:  
ADT: 2180  
TRUCKS: 6.9%

TOWNSHIPS:  
GALATIA

Franklin County  
Saline County  
Franklin County  
Williamson County



APPROX. SCALE: 1" = 1 MILE



FULL SIZE PLANS HAVE BEEN PREPARED USING STANDARD ENGINEERING SCALES. REDUCED SIZED PLANS WILL NOT CONFORM TO STANDARD SCALES. IN MAKING MEASUREMENTS ON REDUCED PLANS, THE ABOVE SCALES MAY BE USED.

J.U.L.I.E.  
JOINT UTILITY LOCATION INFORMATION FOR EXCAVATION  
1-800-892-0123 or www.julie1call.com

GROSS LENGTH OF IMPROVEMENT: = 4360' = 0.83 MILES  
NET LENGTH OF IMPROVEMENT: = 4360' = 0.83 MILES

CONTRACT NO. 98916

STATE OF ILLINOIS  
DEPARTMENT OF TRANSPORTATION  
DIVISION OF HIGHWAYS

SUBMITTED Feb. 25 20 05

*[Signature]*  
DEPUTY DIRECTOR OF HIGHWAYS, REGION ENGINEER

May 13, 2005  
*[Signature]*  
ENGINEER OF DESIGN AND ENVIRONMENT

May 13, 2005  
*[Signature]*  
DIRECTOR OF HIGHWAYS, CHIEF ENGINEER

**PRINTED BY THE AUTHORITY  
OF THE STATE OF ILLINOIS**

PROJECT ENGINEER: LARRY ANDERSON  
SQUAD LEADER: CINDY DETTERING  
(618) 549-2171  
CENTREX: 782-4554

F.A.P. RTE	SECTION	COUNTY	TOTAL SHEETS	SHEET NO.
869	FY06 SEEDING	SALINE	14	2
STA.		TO STA.		
FED. ROAD DIST. NO. -	ILLINOIS	FED. AID PROJECT		

CONTRACT NO. 98916

## INDEX OF SHEETS

<u>SHEET NO.</u>	<u>DESCRIPTION</u>
1	COVER SHEET
2	INDEX OF SHEETS; STANDARDS
3	GENERAL NOTES
4	TYPICAL SECTIONS
5	SUMMARY OF QUANTITIES
6-7	SCHEDULES
8	GENERAL PLAN LAYOUT
9-12	PLAN-PROFILE SHEETS
13-14	ROW SHEETS

## STANDARDS

000001-04  
701001-01  
701006-02  
701301-02  
702001-05

Prepared By:	<i>Joe Blumhagen</i> DISTRICT STUDIES & PLANS ENGINEER
Examined By:	<i>John Egan</i> DISTRICT LAND ACQUISITION ENGINEER
Examined By:	DISTRICT PROGRAM DEVELOPMENT ENGINEER
Examined By:	<i>James D. Anderson</i> DISTRICT OPERATIONS ENGINEER
Examined By:	<i>Joseph L...</i> DISTRICT CONSTRUCTION ENGINEER
Examined By:	<i>David ...</i> DISTRICT MATERIALS ENGINEER
Examined By:	DISTRICT PROJECT IMPLEMENTATION ENGINEER
Approved By:	<i>Mark ...</i> DEPUTY DIRECTOR OF HIGHWAYS REGION FIVE ENGINEER
DATE	<i>Feb 25</i> 20 <i>08</i>

**INDEX OF SHEETS, STANDARDS**

F.A.P. RTE.	SECTION	COUNTY	TOTAL SHEETS	SHEET NO.
869	FY06 SEEDING	SALINE	14	3
STA.		TO STA.		
FED. ROAD DIST. NO.		ILLINOIS	FED. AID PROJECT	

CONTRACT NO. 98916

## GENERAL NOTES

THE CONTRACTOR MUST BEGIN WORK WITHIN 48 HOURS OF NOTICE FROM THE ENGINEER.

IT SHALL BE THE CONTRACTORS RESPONSIBILITY TO VERIFY ALL EXISTING FIELD DIMENSIONS AND CONDITIONS PRIOR TO CONSTRUCTION AND ORDERING OF MATERIALS.

IN GENERAL, ALL EARTH SURFACES DISTURBED DURING CONSTRUCTION OPERATIONS SHALL BE SEEDED AND MULCHED UPON COMPLETION OF ALL GRADING OPERATIONS.

FERTILIZER NUTRIENTS AND LIMESTONE SHALL BE APPLIED TO ALL SEEDED AREAS.

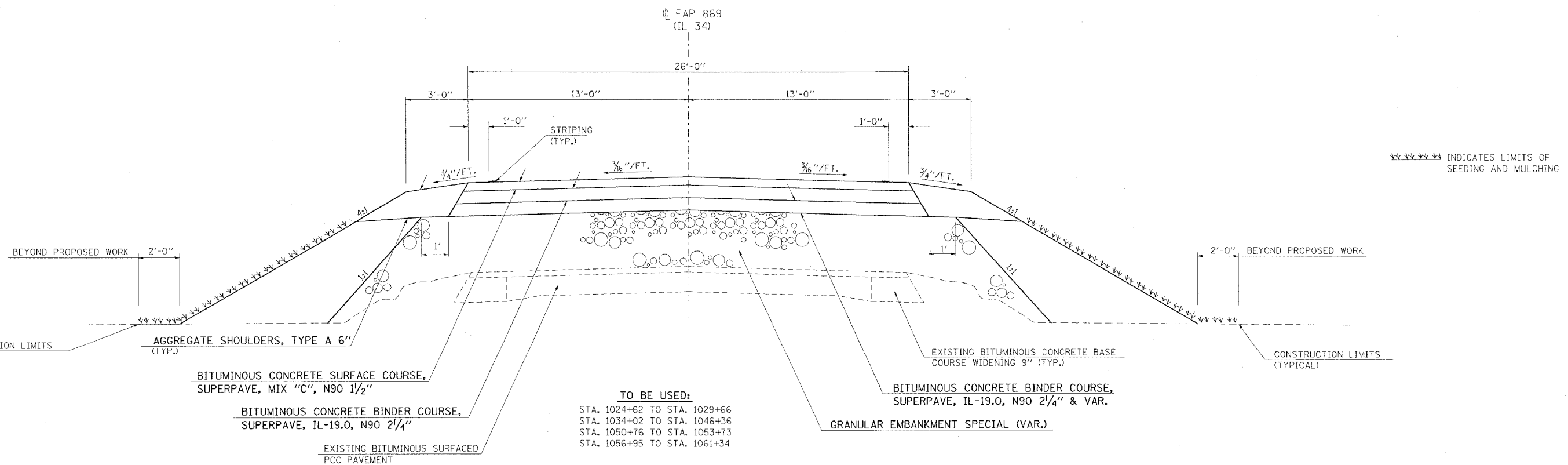
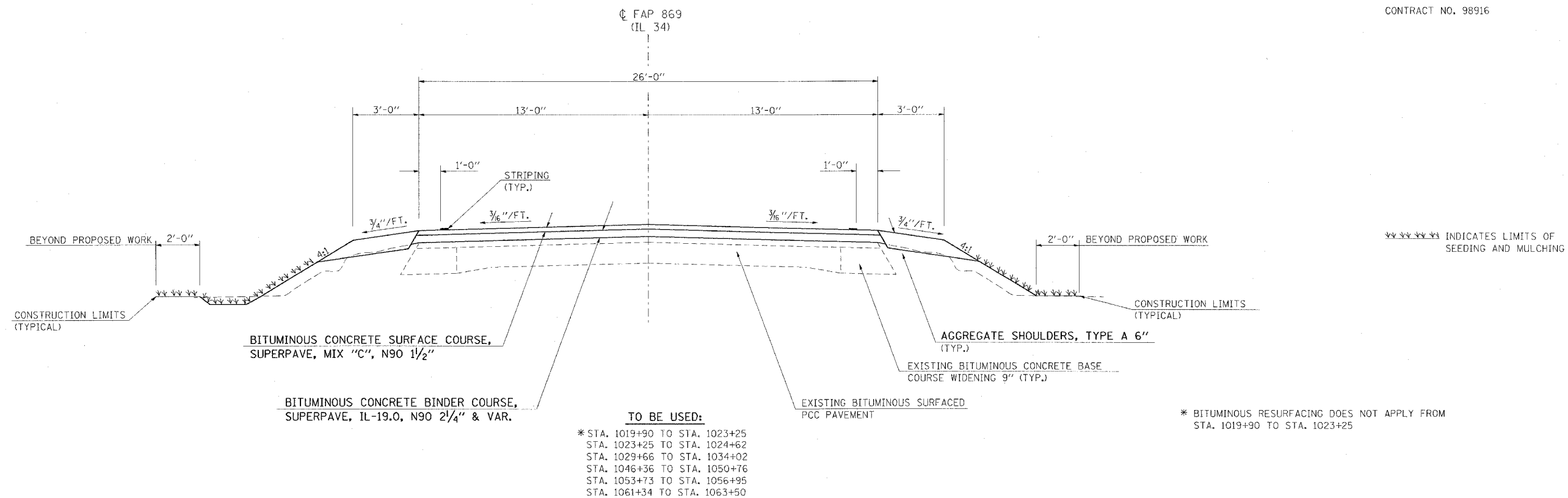
THE RATES OF APPLICATION OF FERTILIZER, MULCH AND LIMESTONE SHALL BE AS SPECIFIED IN THE SPECIAL PROVISIONS.

SECTIONS 250 AND 251 OF THE STANDARD SPECIFICATIONS SHALL GOVERN THIS WORK EXCEPT AS SPECIFIED HEREIN OR AS NOTED IN THE SPECIAL PROVISIONS.

F.A.P. RTE.	SECTION	COUNTY	TOTAL SHEETS	SHEET NO.
869	FY06 SEEDING	SALINE	14	4
STA.	TO STA.			
FED. ROAD DIST. NO.	ILLINOIS	FED. AID PROJECT		

CONTRACT NO. 98916

### TYPICAL SECTION



FEBRUARY 3, 2005 AFTERNOON  
D902305/D902305P3.DGN





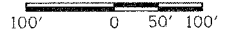
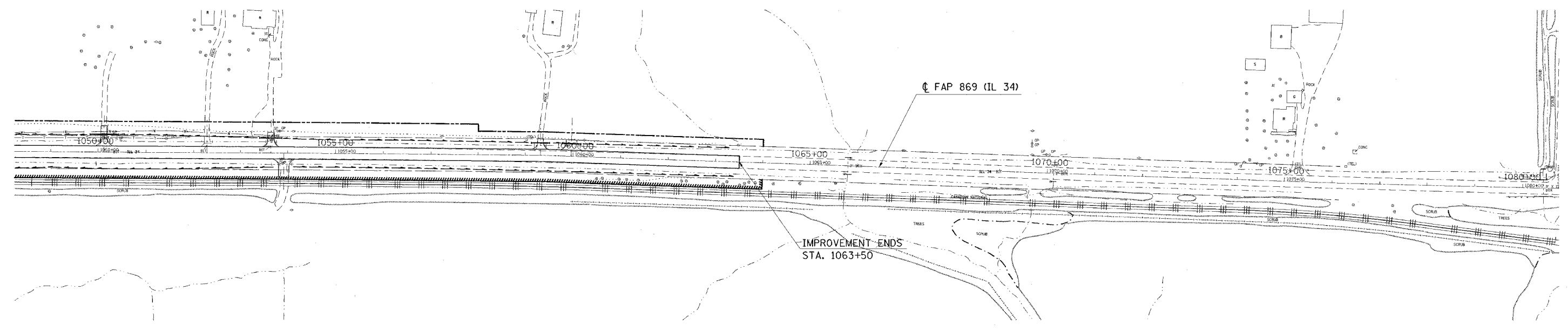
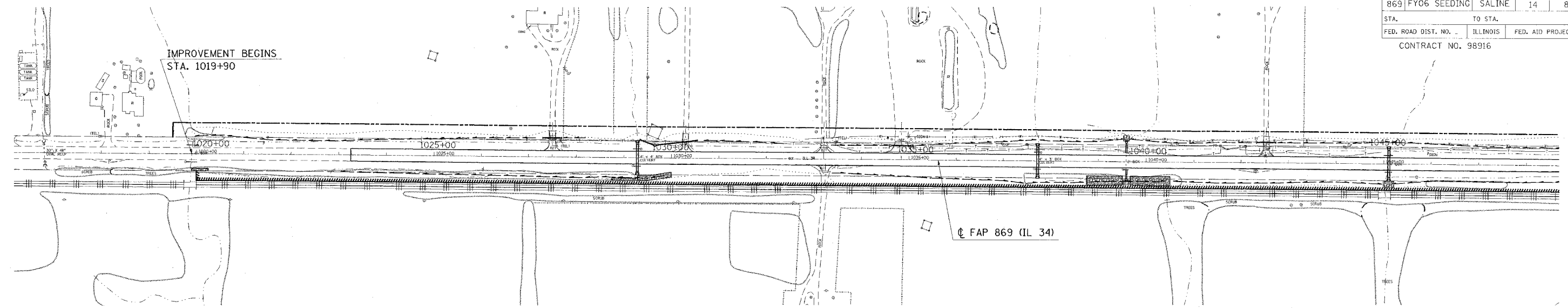
F.A.P. RTE	SECTION	COUNTY	TOTAL SHEETS	SHEET NO
869	FY 06 SEEDING	SALINE	14	7
STA.		TO STA.		
FED. ROAD DIST. NO.		ILLINOIS	FED. AID PROJECT	
CONTRACT NO.: 98916				

### DITCH LINING SCHEDULE

LOCATION STATION TO STATION	EROSION CONTROL BLANKET		HEAVY DUTY EROSION CONTROL BLANKET	
	FOR INFO. ONLY	SQ YD	FOR INFO. ONLY	SQ YD
	WIDTH FOOT		WIDTH FOOT	
IL 34				
SALINE COUNTY				
RURAL				
LT STA 1019+90.0 TO STA 1021+50.0			12.0	213.3
LT STA 1021+50.0 TO STA 1026+00.0	12.0	600.0		
LT STA 1026+00.0 TO STA 1027+45.0	12.0	193.3		
LT STA 1027+55.0 TO STA 1028+50.0	8.0	84.4		
LT STA 1029+28.5 TO STA 1030+50.0			12.0	162.0
LT STA 1030+50.0 TO STA 1032+50.0	12.0	266.7		
LT STA 1033+50.0 TO STA 1035+50.0	12.0	226.7		
LT STA 1035+50.0 TO STA 1037+72.2			12.0	296.3
LT STA 1037+72.2 TO STA 1038+25.0			12.0	70.4
LT STA 1038+25.0 TO STA 1039+00.0	12.0	100.0		
LT STA 1039+00.0 TO STA 1039+58.4			12.0	77.9
LT STA 1039+58.4 TO STA 1040+50.0			12.0	122.1
LT STA 1040+50.0 TO STA 1045+10.0	12.0	600.0		
LT STA 1045+10.0 TO STA 1063+50.0	12.0	2,400.0		
RT STA 1019+90.0 TO STA 1020+25.0				
RT STA 1020+25.0 TO STA 1020+60.0	11.0	42.9		
RT STA 1023+00.0 TO STA 1029+28.5	12.0	838.0		
RT STA 1029+40.0 TO STA 1029+55.0	3.0	5.1		
RT STA 1033+50.0 TO STA 1037+00.0	12.0	466.7		
RT STA 1037+00.0 TO STA 1037+72.2			12.0	96.3
RT STA 1037+47.0 TO STA 1037+72.0	4.0	9.0		
RT STA 1037+72.2 TO STA 1038+75.0	12.0	137.1		
RT STA 1038+00.0 TO STA 1039+00.0	8.0	88.9		
RT STA 1040+75.0 TO STA 1041+50.0	11.0	91.7		
RT STA 1040+75.0 TO STA 1045+10.3	12.0	580.4		
RT STA 1042+00.0 TO STA 1043+00.0	3.0	33.3		
RT STA 1045+10.0 TO STA 1045+55.0	6.0	30.1		
RT STA 1045+10.3 TO STA 1046+00.0			12.0	119.7
RT STA 1046+00.0 TO STA 1063+50.0	12.0	2,306.7		
<b>PROJECT TOTALS:</b>		<b>9,101.0</b>		<b>1,158.0</b>

DATE-TIME: FEBRUARY 4, 2005 10:02:30 AM  
 DOC-SPEC: 0002305.d02305sch.m22

F.A. RTE.	SECTION	COUNTY	TOTAL SHEETS	SHEET NO.
869	FY06 SEEDING	SALINE	14	8
STA.		TO STA.		
FED. ROAD DIST. NO. -		ILLINOIS	FED. AID PROJECT	
CONTRACT NO. 98916				



OPLAN1 FEBRUARY 3, 2005 AFTERNOON  
 0962305/0962305.dgn

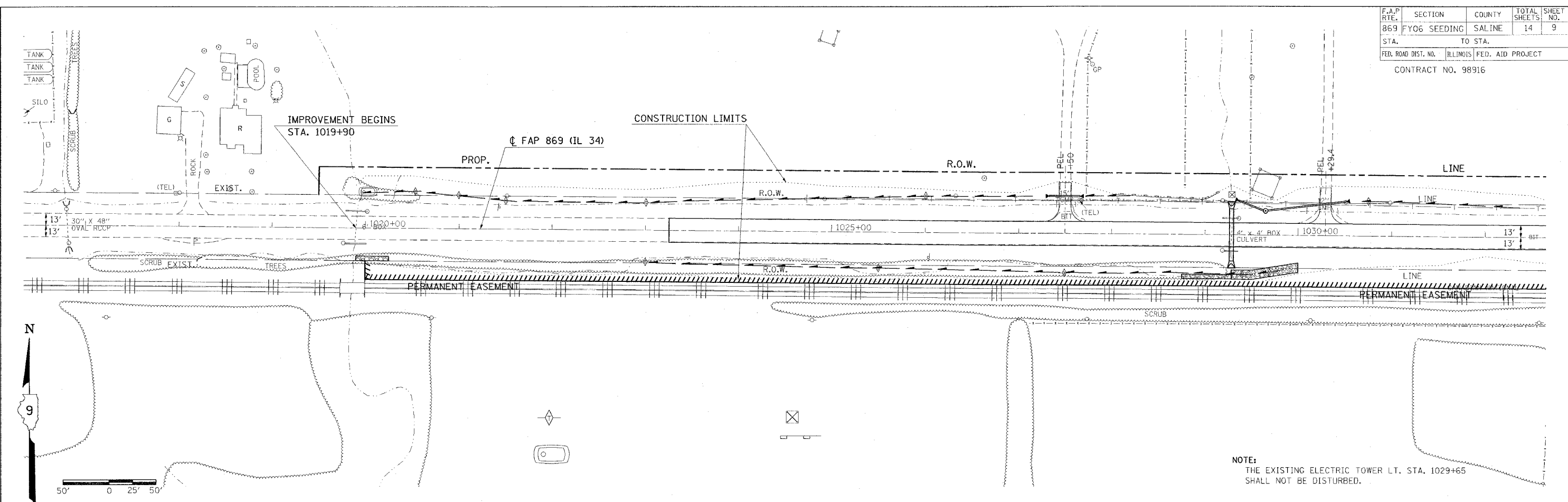
OPLAN2 FEBRUARY 3, 2005 AFTERNOON  
 0962305/0962305.dgn



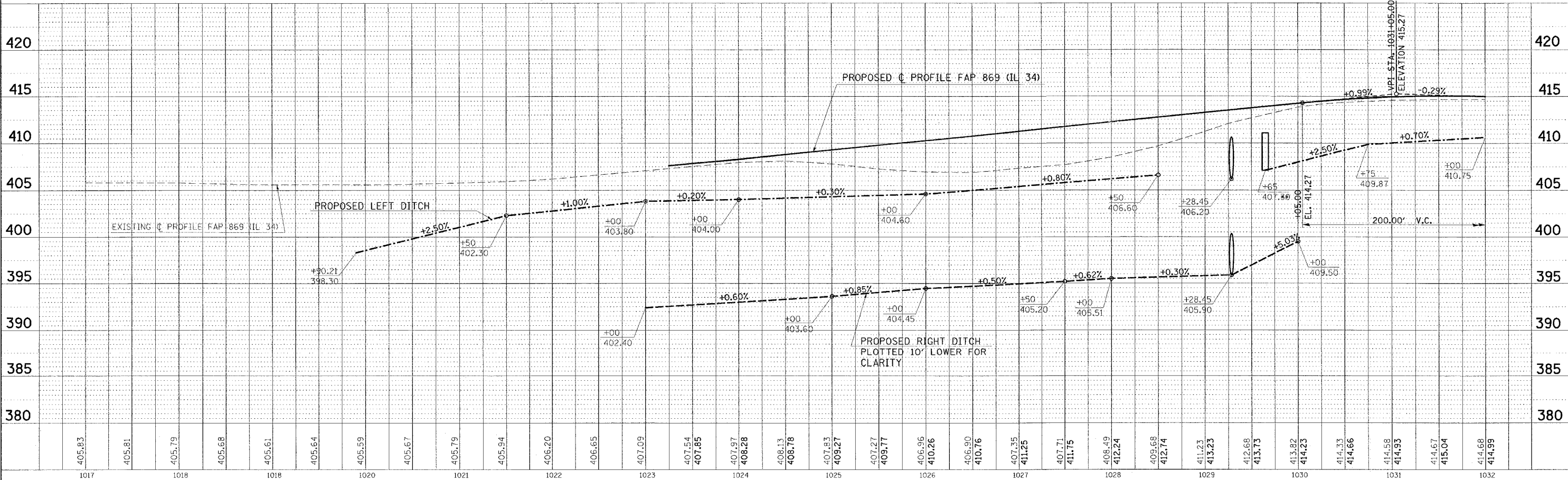
F.A.P. RTE.	SECTION	COUNTY	TOTAL SHEETS	SHEET NO.
869	FY06 SEEDING	SALINE	14	9
STA.	TO STA.			
FED. ROAD DIST. NO.	ILLINOIS	FED. AID PROJECT		
CONTRACT NO. 98916				

DATE	BY	DATE	BY
PLAN	DATE	BY	DATE
PROFILE	DATE	BY	DATE

DATE	BY	DATE	BY
PLAN	DATE	BY	DATE
PROFILE	DATE	BY	DATE



NOTE:  
THE EXISTING ELECTRIC TOWER LT. STA. 1029+65  
SHALL NOT BE DISTURBED.

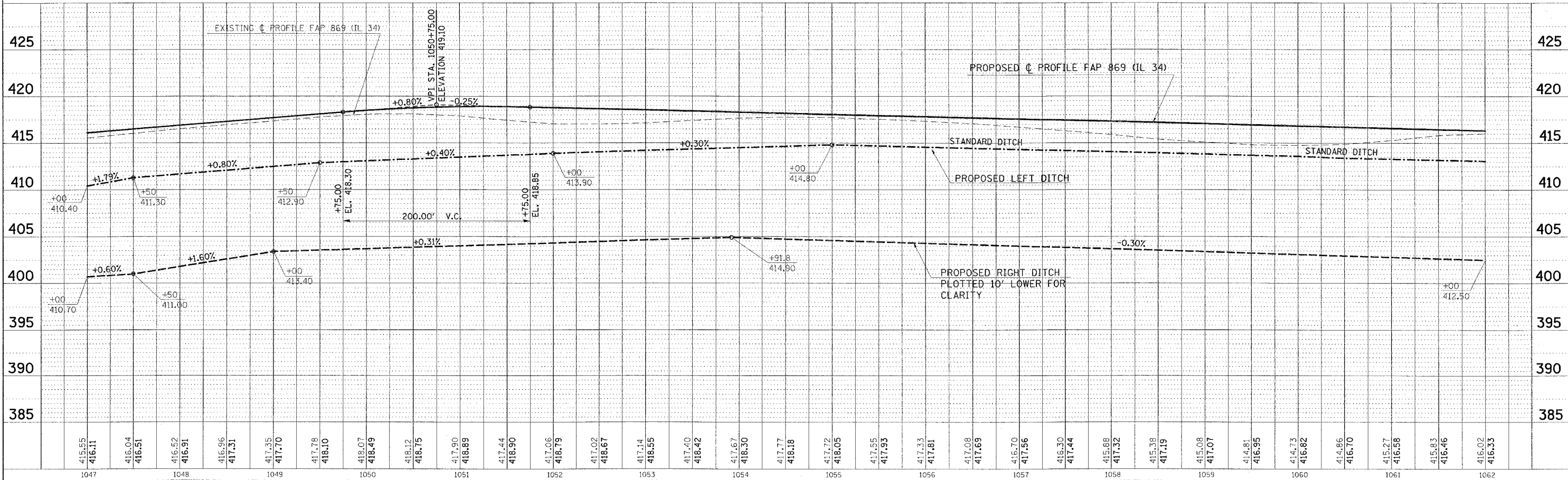
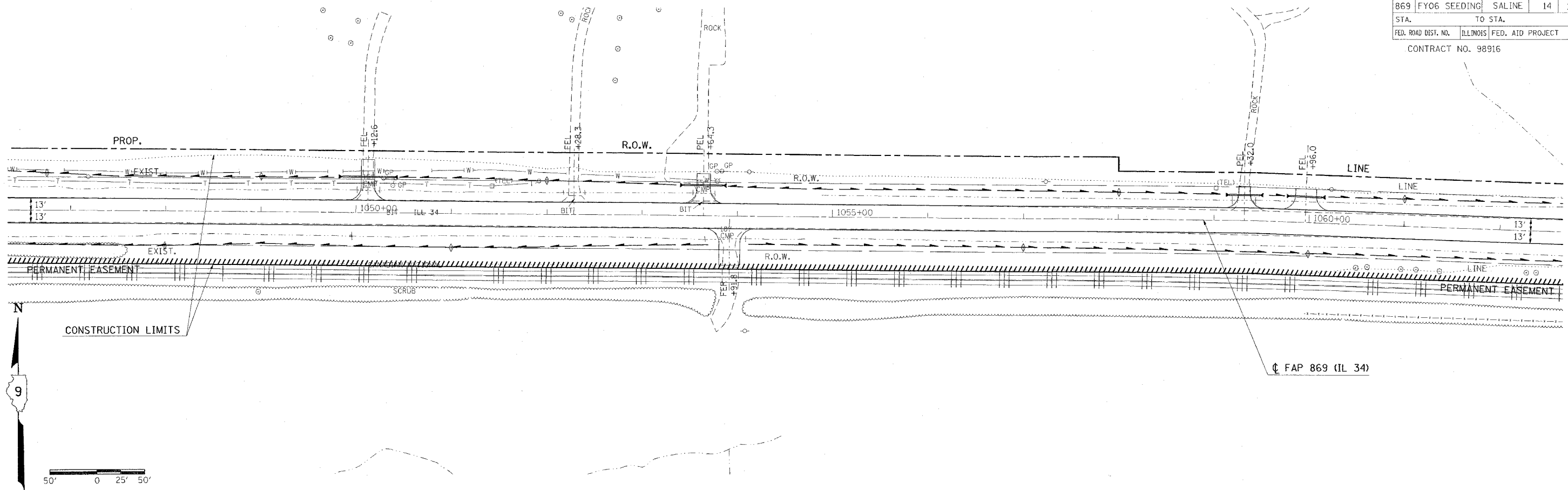


FEBRUARY 3, 2005 AFTERNOON  
D:\02305\0502305p2.dgn

PLAN PROFILE SHEET STA. 1017+00 TO STA. 1032+00



F.A.P. R/F	SECTION	COUNTY	TOTAL SHEETS	SHEET NO.
869	FY06 SEEDING	SALINE	14	11
STA.	TO STA.			
FED. ROAD DIST. NO.	ILLINOIS	FED. AID PROJECT		
CONTRACT NO. 98916				



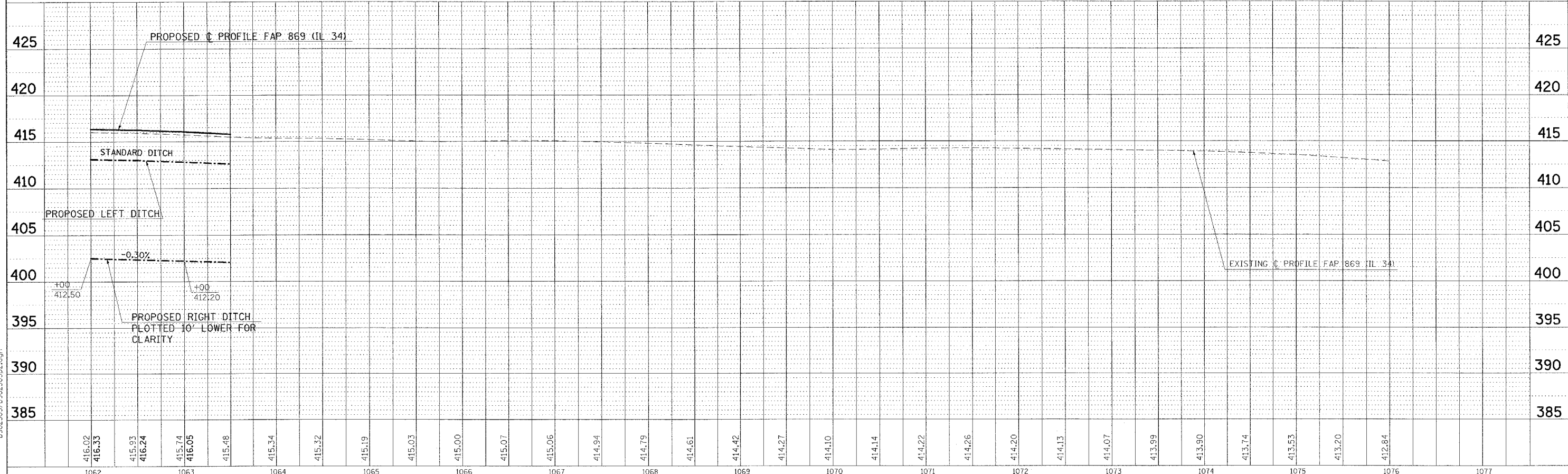
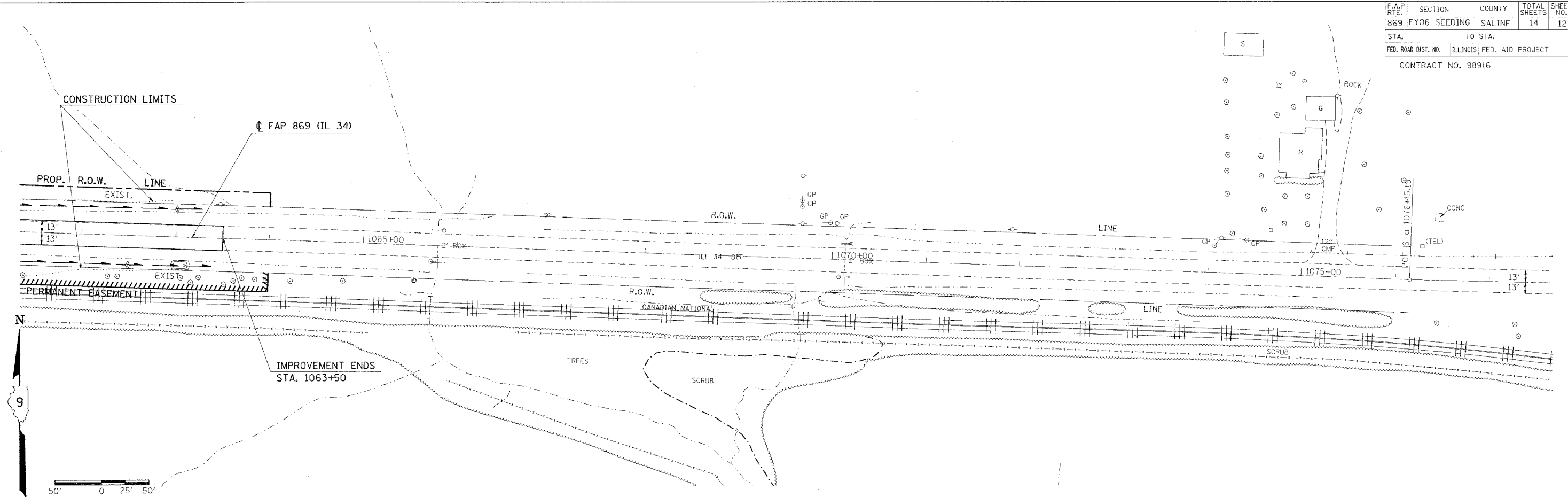
PLAN	DRAWN	DATE
BY		
CHECKED		
DATE		

PROFILE	DRAWN	DATE
BY		
CHECKED		
DATE		

FEBRUARY 3, 2005 AFTERNOON  
 34min3 D:\02\05\0302\0302.dgn

PLAN PROFILE SHEET STA. 1047+00 TO STA. 1062+00

F.A.P. RITE	SECTION	COUNTY	TOTAL SHEETS	SHEET NO.
869	FY06 SEEDING	SALINE	14	12
STA.	TO STA.			
FED. ROAD DIST. NO.	ILLINOIS	FED. AID PROJECT		
CONTRACT NO. 98916				



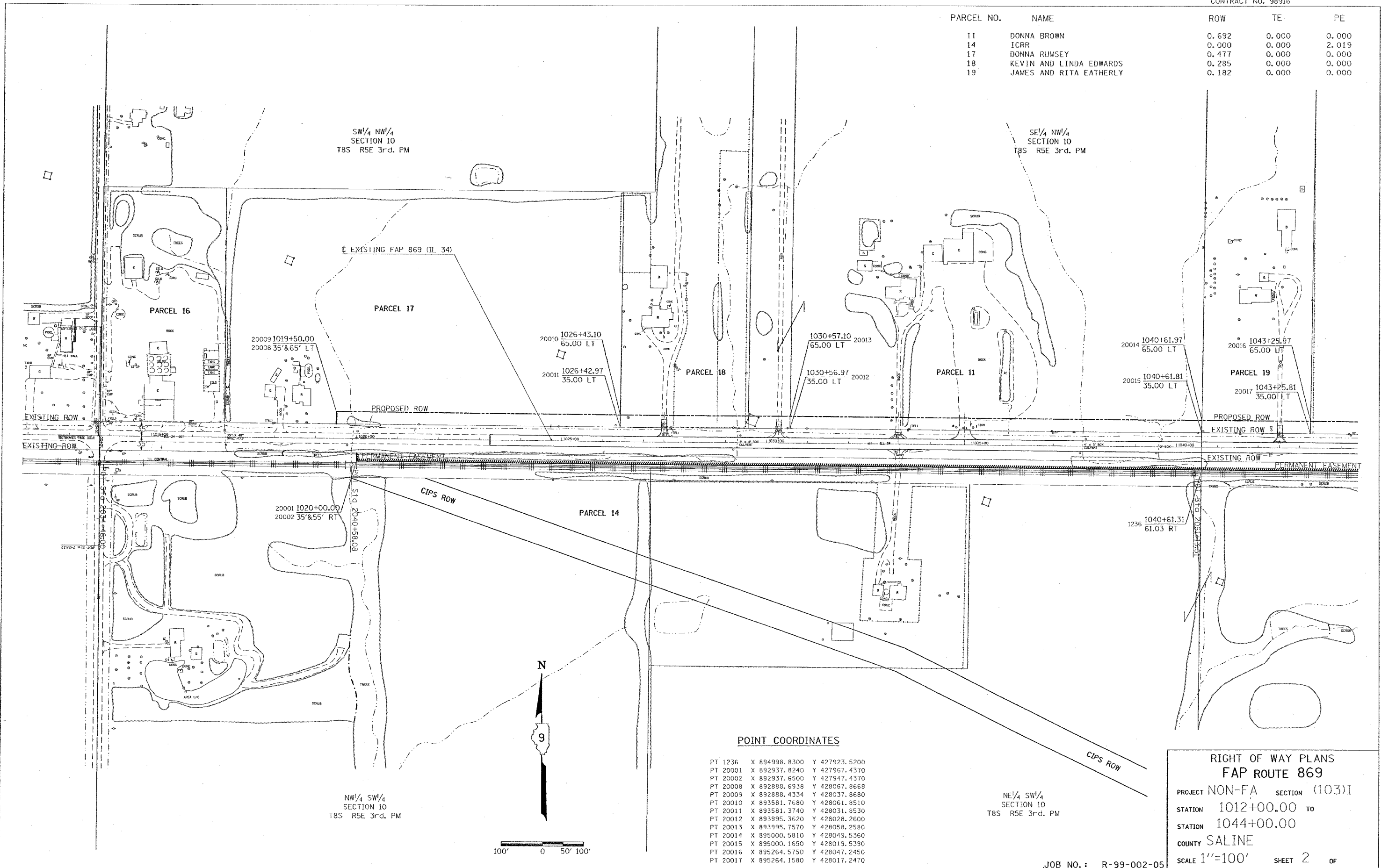
PLAN PROFILE SHEET STA. 1062+00 TO STA. 1077+00

DATE	
BY	
DATE	
BY	
DATE	
BY	
DATE	
BY	
DATE	
BY	

DATE	
BY	
DATE	
BY	
DATE	
BY	
DATE	
BY	
DATE	
BY	

34min4 FEBRUARY 8, 2005 MORNING  
D902305/D902305p2.dgn

PARCEL NO.	NAME	ROW	TE	PE
11	DONNA BROWN	0.692	0.000	0.000
14	ICRR	0.000	0.000	2.019
17	DONNA RUMSEY	0.477	0.000	0.000
18	KEVIN AND LINDA EDWARDS	0.285	0.000	0.000
19	JAMES AND RITA EATHERLY	0.182	0.000	0.000



**POINT COORDINATES**

PT 1236	X 894998.8300	Y 427923.5200
PT 20001	X 892937.8240	Y 427967.4370
PT 20002	X 892937.6500	Y 427947.4370
PT 20008	X 892888.6938	Y 428067.8668
PT 20009	X 892888.4334	Y 428037.8680
PT 20010	X 893581.7680	Y 428061.8510
PT 20011	X 893581.3740	Y 428031.8530
PT 20012	X 893995.3620	Y 428028.2600
PT 20013	X 893995.7570	Y 428058.2580
PT 20014	X 895000.5810	Y 428049.5360
PT 20015	X 895000.1650	Y 428019.5390
PT 20016	X 895264.5750	Y 428047.2450
PT 20017	X 895264.1580	Y 428017.2470

NE 1/4 SW 1/4  
SECTION 10  
T8S R5E 3rd. PM

**RIGHT OF WAY PLANS**  
**FAP ROUTE 869**

PROJECT NON-FA SECTION (103)I

STATION 1012+00.00 TO

STATION 1044+00.00

COUNTY SALINE

SCALE 1"=100'

SHEET 2 OF

JOB NO. : R-99-002-05

REVISED BY

DATE

DATE

DRAWN BY

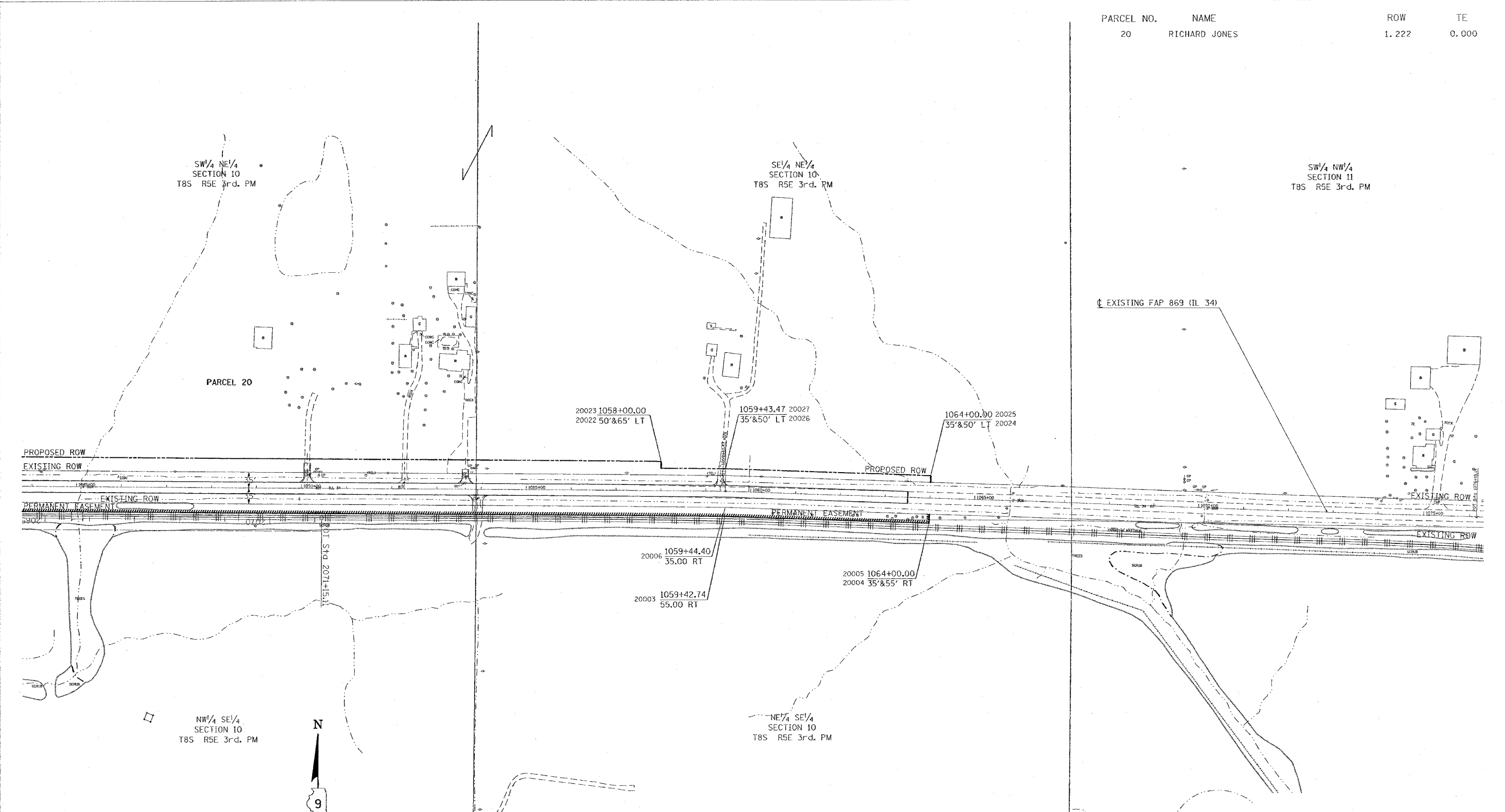
FEBRUARY 22, 2005 MORNING  
ROW: D903502/D903502/rowsht.dgn  
C8831

CONTRACT NO. 98916

PARCEL NO.	NAME	ROW	TE
20	RICHARD JONES	1.222	0.000

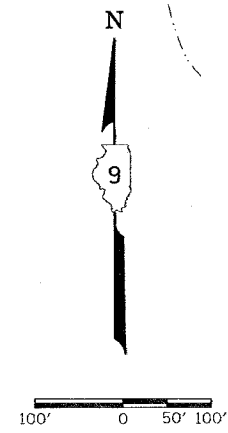
REVISED BY \_\_\_\_\_ DATE \_\_\_\_\_

DRAWN BY \_\_\_\_\_ DATE \_\_\_\_\_



**POINT COORDINATES**

PT 20003	X	896880.2440	Y	427913.2160
PT 20004	X	897335.7580	Y	427897.1600
PT 20005	X	897336.4630	Y	427917.1480
PT 20006	X	896881.1457	Y	427933.1970
PT 20022	X	896738.5480	Y	428034.4510
PT 20023	X	896738.4180	Y	428019.4510
PT 20024	X	897339.4570	Y	428002.0950
PT 20025	X	897338.9290	Y	427987.1050
PT 20026	X	896881.8832	Y	428018.2061
PT 20027	X	896881.7530	Y	428003.2066



**RIGHT OF WAY PLANS**  
**FAP ROUTE 869**  
 PROJECT NON-FA SECTION (103)I  
 STATION 1044+00.00 TO  
 STATION 1066+00.00  
 COUNTY SALINE  
 SCALE 1"=100' SHEET 3 OF

JOB NO.: R-99-002-05

FEBRUARY 22, 2005 MORNING  
 FOW2 D903502/D903502-COWSHT.dgn  
 GBS2