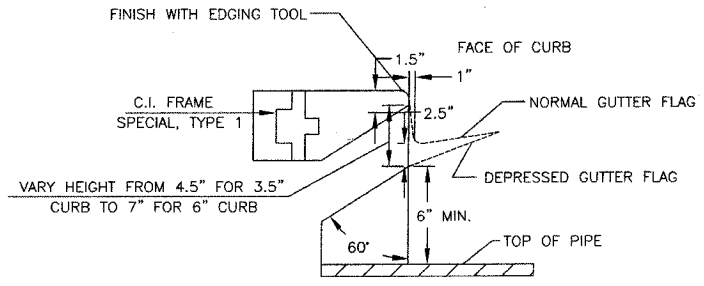
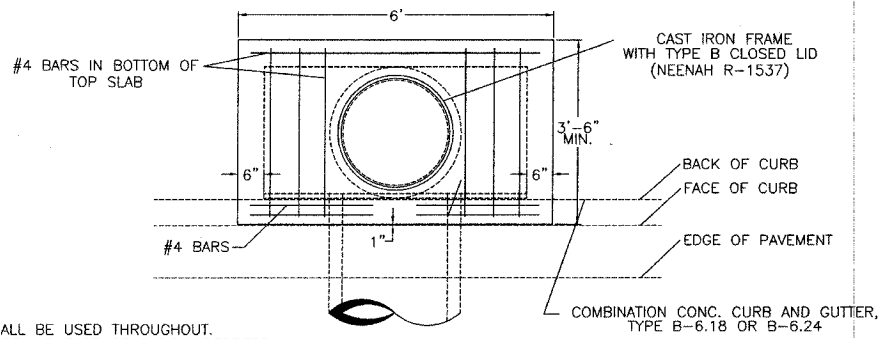
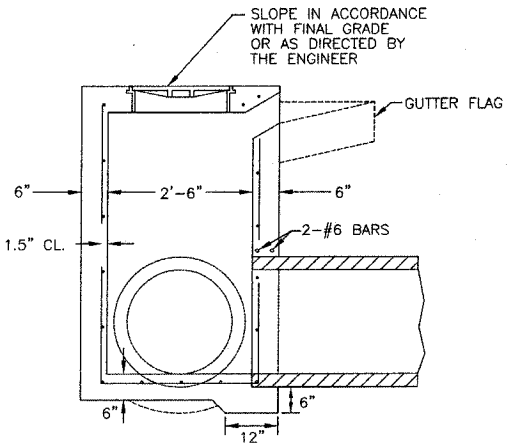
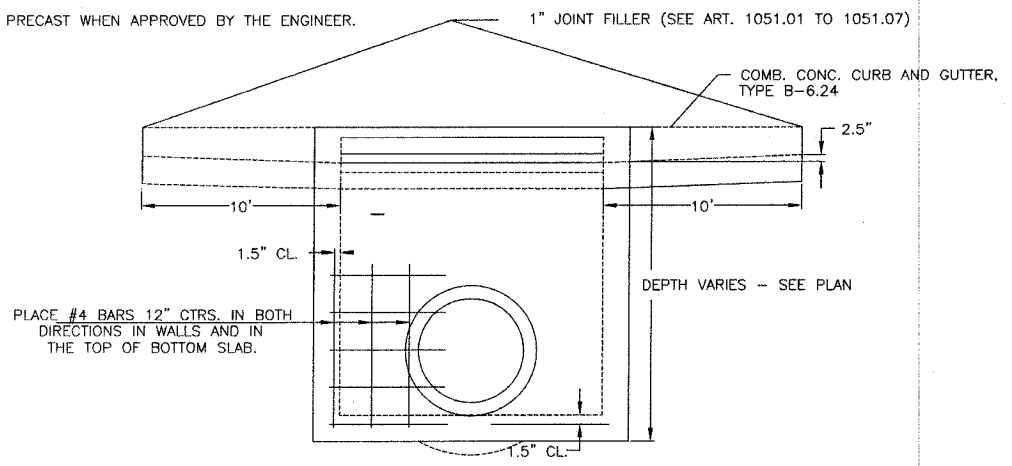


F. A. U. ROUTE	SECTION	COUNTY	TOTAL SHEETS	SHEET NUMBER
9732	00-00102-00-FF	JACKSON	27	4
JOB NO. C-99-033-33	PROJECT NO. M-500(17)			
CITY OF CARBONDALE		CONTRACT NO. 99175		



NOTES:
 CLASS SI CONCRETE SHALL BE USED THROUGHOUT.
 SET FACE OF INLET 1" BEHIND FACE OF CURB. DEPRESS GUTTER FLOWLINE AT INLET 2" BELOW NORMAL GUTTER FLOWLINE. CONSTRUCT TRANSITION IN FLOWLINE IN 10 FEET EACH SIDE OF INLET. PIPES TO BE CONNECTED TO INLET AS SHOWN ON STORM SEWER LAYOUT.

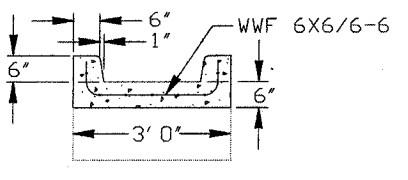
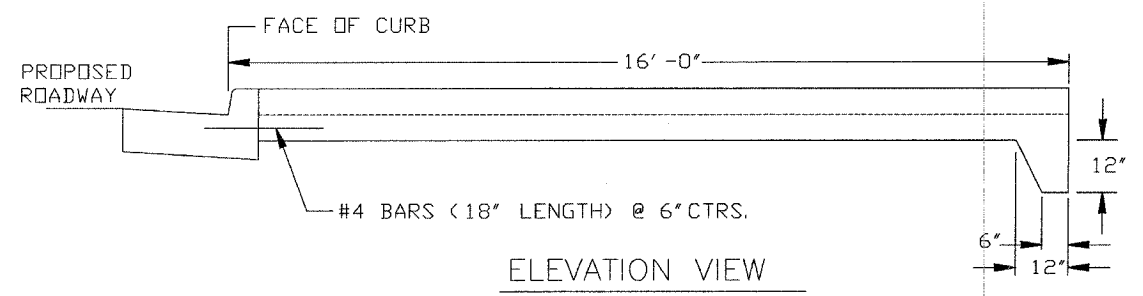
INLETS WILL BE PAID FOR AT THE CONTRACT UNIT PRICE EACH FOR INLETS, SPECIAL, TYPE 3, 5 FEET WHICH PRICE SHALL INCLUDE THE CAST IRON FRAME WITH TYPE B CLOSED LID, THE REINFORCEMENT BARS, AND JOINT FILLER.
 INLETS MAY BE PRECAST WHEN APPROVED BY THE ENGINEER.



ELEVATION

SECTION

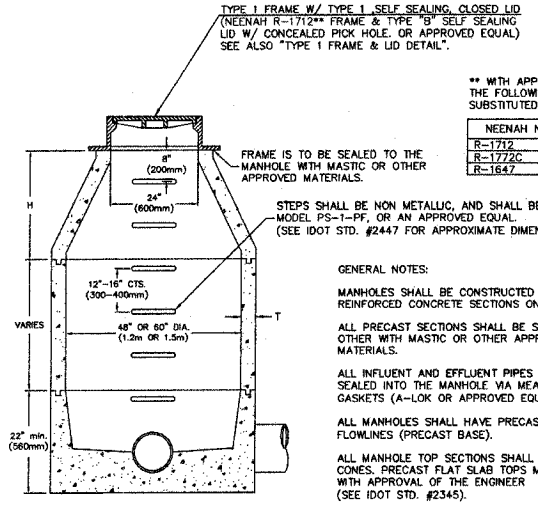
DETAILS OF INLET SPECIAL, TYPE 3, 5 FEET NTS



ELEVATION VIEW

SECTION VIEW

DETAILS OF CONCRETE GUTTER OUTLET (SPECIAL) NTS

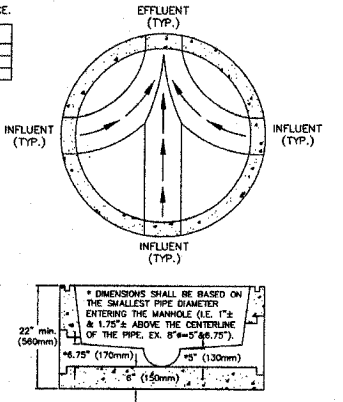


NEENAH NO.	FRAME HEIGHT
R-1712	9" (228mm)
R-1772C	7" (178mm)
R-1647	4" (100mm)

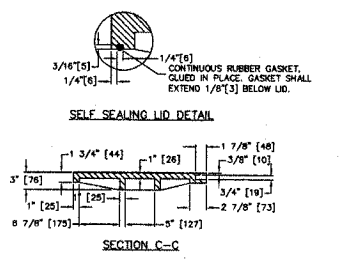
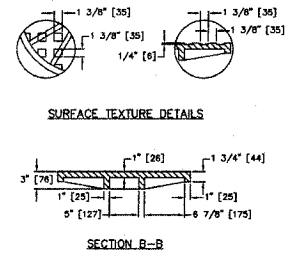
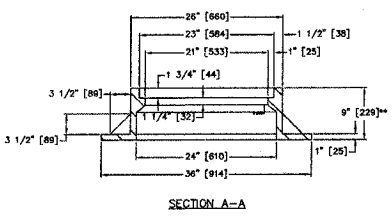
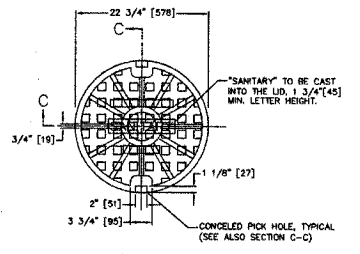
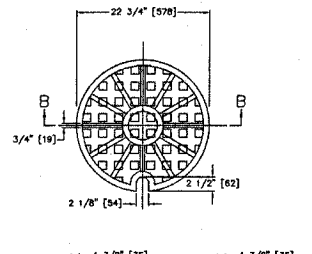
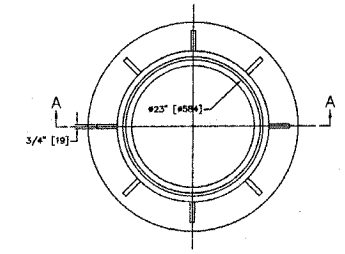
GENERAL NOTES:
 MANHOLES SHALL BE CONSTRUCTED OF PRECAST, REINFORCED CONCRETE SECTIONS ONLY.
 ALL PRECAST SECTIONS SHALL BE SEALED TO EACH OTHER WITH MASTIC OR OTHER APPROVED MATERIALS.
 ALL INFLUENT AND EFFLUENT PIPES SHALL BE SEALED INTO THE MANHOLE VIA MEANS OF RUBBER GASKETS (A-LOK OR APPROVED EQUAL).
 ALL MANHOLES SHALL HAVE PRECAST INVERTS AND FLOWLINES (PRECAST BASE).
 ALL MANHOLE TOP SECTIONS SHALL BE ECCENTRIC CONES. PRECAST FLAT SLAB TOPS MAY BE USED WITH APPROVAL OF THE ENGINEER (SEE IDOT STD. #2345).

DIMENSION	48" (1.2m)	60" (1.5m)
T. THICKNESS	4" (100mm)	3" (75mm)
H. CONE HEIGHT*	30" (750mm)	43" (1.1m)

*MAY VARY TO PLUS 6" (150mm) FROM GIVEN DIM.



MANHOLE, TYPE A (SANITARY) NTS



CAST FRAME - SECTION A-A
390 LBS (177 kg)

CAST CLOSED LID - STORM
150 LBS (68 kg)

SELF-SEALING CLOSED LID - SANITARY
150 LBS (68 kg)

NOTES: ALL DIMENSIONS ARE IN INCHES (MILLIMETERS) UNLESS OTHERWISE NOTED.
 *MAY VARY WITH ENGINEER APPROVAL (I.E. 7[175] OR 4[100]).

TYPE 1 FRAME & LID DETAILS NTS



CIP NO. ST0107 - REED STATION ROAD NORTH
MISCELLANEOUS DETAILS