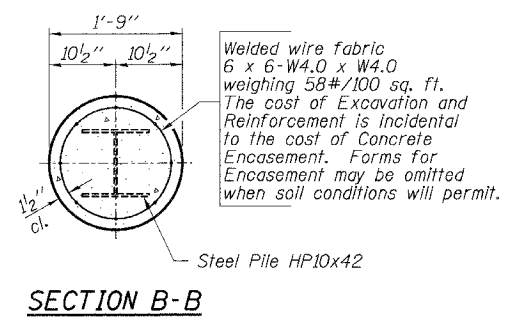
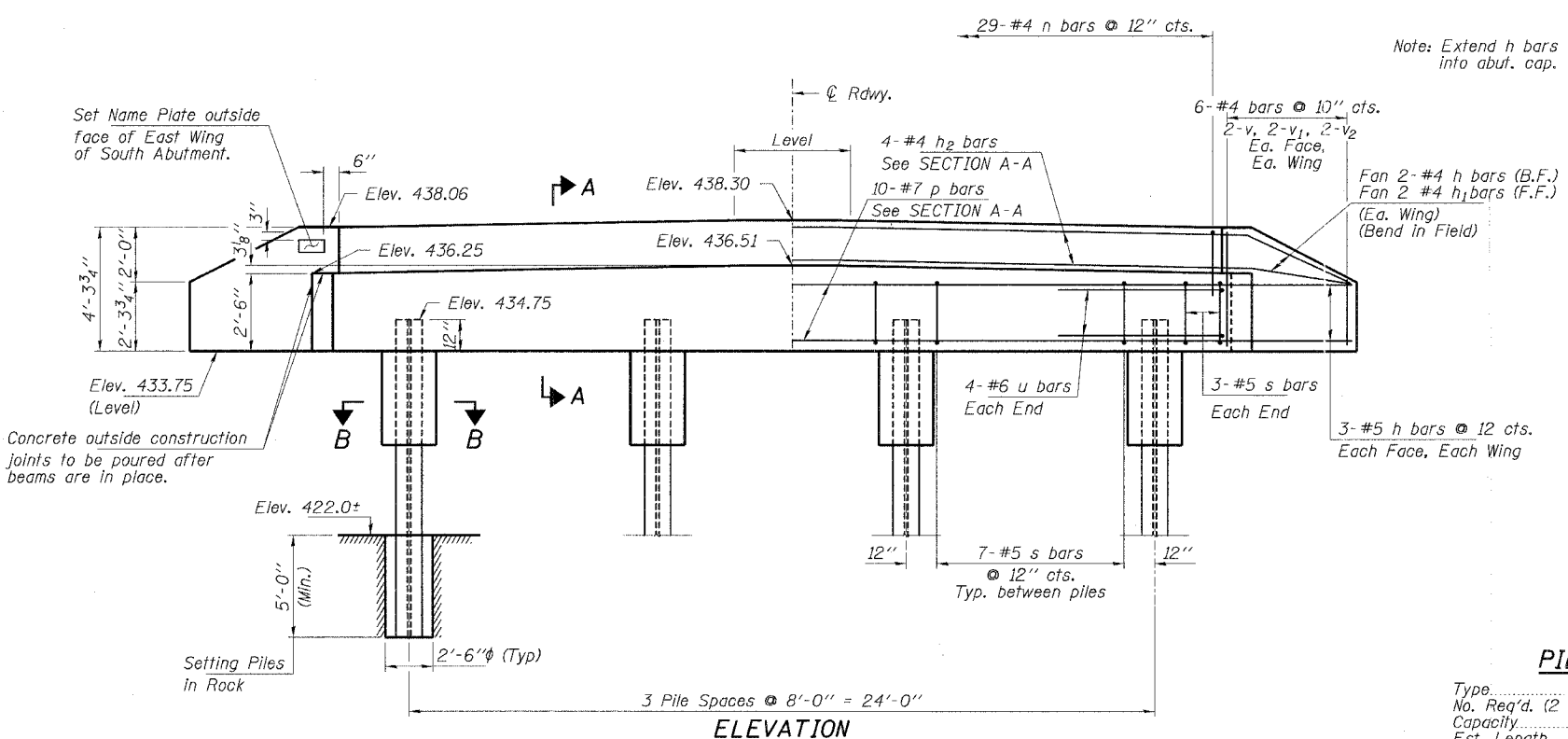
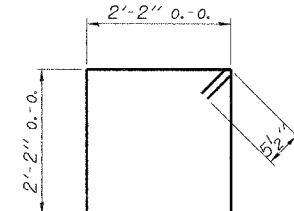
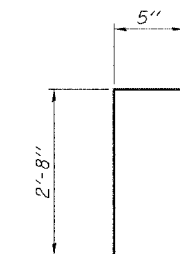
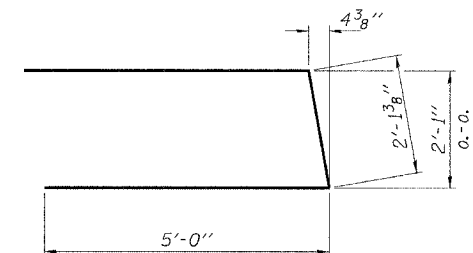
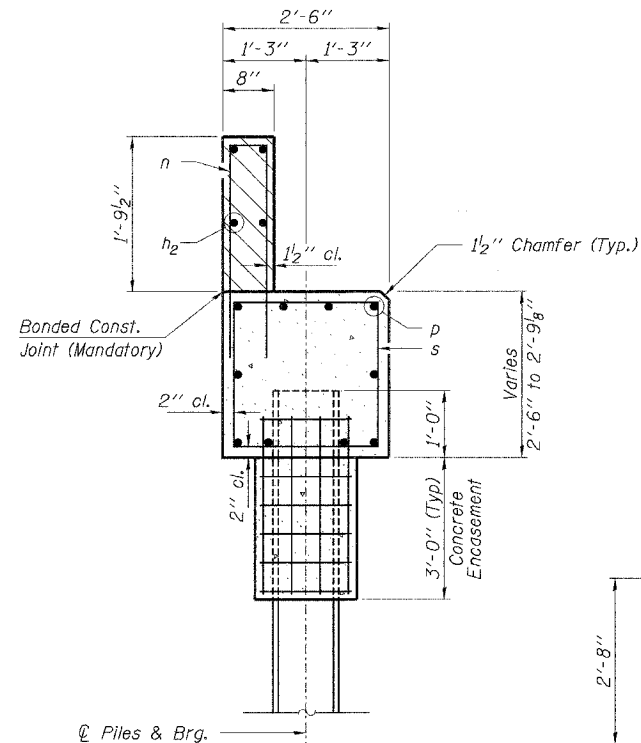
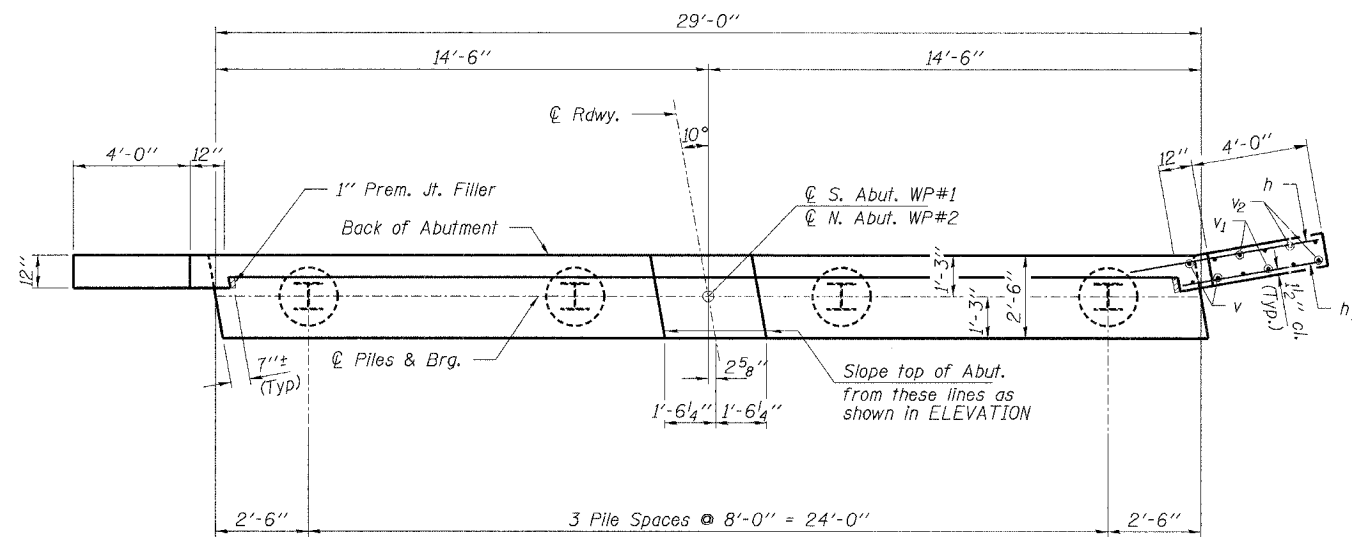


ROUTE NO.	SECTION	COUNTY	TOTAL SHEETS	SHEET
T.R. 90	02-01175-00-BR	UNION	18	17
FED. ROAD DIST. NO.		ILLINOIS	FED. AID PROJECT	

CONTRACT NO. 99213



BILL OF MATERIAL - 2 ABUTS.

BAR NO.	NO.	SIZE	LENGTH	SHAPE
h	32	#4	5'-9"	—
h1	8	#4	4'-9"	—
h2	8	#4	27'-6"	—
n	58	#4	5'-9"	□
p	20	#7	28'-9"	—
s	54	#5	9'-7"	□
u	16	#6	12'-2"	—
v	16	#4	4'-0"	—
v1	16	#4	3'-0"	—
v2	16	#4	2'-0"	—
Concrete Structures		Cu. Yd.	19.0	
Reinforcement Bars		Pound	2,620	
Steel Piles HP10x42		Foot	144	
Name Plates		Each	1	
Class SI Concrete Encasement		Cu. Yd.	2.0	
Setting Piles in Rock		Each	8	

PILE DATA

Type..... Steel HP10x42
 No. Req'd. (2 Abut.)..... 8
 Capacity..... 40 Tons/Pile
 Est. Length..... 18 Feet/Pile

* To be set in Sound Rock a minimum 5'-0" depth. See Special Provisions.

HLR

Rice, Berry and Associates
 A Division of Hampton, Lenzini and Renwick, Inc.
 Civil & Structural Engineers
 801 S. Durkin Drive
 Springfield, Illinois 62704
 217-546-3400
 P.O. Box 1036
 DuQuoin, Illinois 62832
 618-790-4637

Account Number 12-92-0006-1
 Dates 02/02/05
 DESIGNED: T.P.L. CHECKED: S.W.M. DRAWN: D.T.M.

ABUTMENTS
 SECTION 02-01175-00-BR
 T.R. 90 / LINGLE CREEK ROAD
 UNION COUNTY
 STR. NO. 091-3217 / STATION 9+03