

SCOPE OF WORK

THE PROJECT SCOPE CONSISTS OF CONSTRUCTION OF A 1010-FT BY 75-FT RUNWAY EXTENSION TO RUNWAY 6 ALONG WITH NECESSARY AND RELATED WORK.

PROPOSED SAFETY PLAN

GENERAL- THE HARRISBURG-RALEIGH AIRPORT AUTHORITY CURRENTLY HAS A PAVED RUNWAY 6-24 WHICH IS 4005 FT. x 75 FT. AND A PAVED RUNWAY 14-32 WHICH IS 2820 FT. x 75 FT.

CONTRACTOR'S RESPONSIBILITIES

IDENTIFICATION- THE CONTRACTOR'S VEHICLES AND EQUIPMENT SHALL BE PROPERLY MARKED WITH 3-FOOT SQUARE INTERNATIONAL ORANGE AND WHITE CHECKERED FLAGS ANYTIME THEY ARE ON AIRPORT PROPERTY.

THE CONTRACTOR AND HIS EMPLOYEES SHALL BE RESTRICTED TO THE WORK AREA.

EQUIPMENT PARKING AND STORAGE- THE CONTRACTOR'S EQUIPMENT PARKING, STORAGE, AND EMPLOYEE PARKING WILL BE AT THE LOCATION SHOWN ON THIS SHEET. ONLY CONTRACTOR VEHICLES AND EQUIPMENT REQUIRED FOR CONSTRUCTION WILL BE ALLOWED OUTSIDE THIS AREA.

BARRICADES AND TRAFFIC CONES- IT WILL BE THE CONTRACTOR'S RESPONSIBILITY TO PLACE AND MAINTAIN BARRICADES AND TRAFFIC CONES AS REQUIRED AND AS DIRECTED BY THE RESIDENT ENGINEER. BARRICADES, THEIR MAINTENANCE, PLACEMENT, AND REMOVAL WILL BE CONSIDERED AS AN INCIDENTAL ITEM TO THE CONTRACT AND NO ADDITIONAL COMPENSATION WILL BE ALLOWED.

THE CONTRACTOR WILL NOT BE ALLOWED ON ANY AIRPORT PAVEMENT. THE CONTRACTOR WILL BE RESPONSIBLE FOR REPAIRING ANY DAMAGE TO EXISTING PAVEMENTS CAUSED BY HIS PERSONNEL OR EQUIPMENT.

HAUL ROUTE AND EQUIPMENT PARKING

THE CONTRACTOR WILL USE THE DESIGNATED HAUL ROUTE AND EQUIPMENT PARKING AREA SHOWN ON THIS SAFETY PLAN. THE PROPOSED EQUIPMENT PARKING AREA WILL BE APPROXIMATELY 100-FT BY 200-FT. THE CONTRACTOR WILL BE REQUIRED TO MAINTAIN THE PROPOSED HAUL ROUTE AND PARKING AREA THROUGHOUT THE COURSE OF THE PROJECT. AT THE CONCLUSION OF THE PROJECT, ALL AREAS DISTURBED WILL BE RESTORED AS NEEDED TO ITS ORIGINAL STATE. RESTORATION OF THE HAUL ROUTE AND EQUIPMENT PARKING AREA WILL BE CONSIDERED INCIDENTAL TO THE PROJECT AND NO ADDITIONAL COMPENSATION WILL BE ALLOWED.

UTILITY NOTE

THE CONTRACTOR IS RESPONSIBLE FOR CONTACTING ALL UTILITY COMPANIES AND ORGANIZATIONS THAT HAVE LINES OR CONDUITS IN THE PROPOSED WORK AREA. ALL LINES AND CONDUITS SHALL BE LOCATED AND IDENTIFIED FOR DEPTH BEFORE ANY EXCAVATION BEGINS. THE CONTRACTOR SHALL CALL JULIE (1-800-892-0123) TO ACCOMPLISH THESE REQUIREMENTS. THE CONTRACTOR IS RESPONSIBLE FOR IDENTIFYING ALL NON-JULIE UTILITIES LOCATED WITHIN THE PROPOSED CONSTRUCTION LIMITS. THESE UTILITIES ARE TO BE LOCATED PRIOR TO THE START OF CONSTRUCTION.

J.U.L.I.E. INFORMATION

COUNTY.....SALINE
CITY.....HARRISBURG (5MI NORTH)
TOWNSHIP.....RALEIGH
SECTION NO.....21
NEAREST MAJOR ROAD INTERSECTION...ILLINOIS RT. 34 & AIRPORT DRIVE
AIRPORT ADDRESS...HARRISBURG-RALEIGH AIRPORT
PO BOX 33
HARRISBURG, IL 62946

NOTE:

THE COST OF CONSTRUCTING, PLACING, MAINTAINING, AND REMOVING CROSSES WILL BE CONSIDERED INCIDENTAL TO THE CONTRACT AND NO ADDITIONAL COMPENSATION WILL BE ALLOWED. THE CROSSES WILL BE YELLOW IN COLOR AND SHALL BE MADE OF A SUITABLE MATERIAL AS APPROVED BY THE RESIDENT ENGINEER. THE CROSSES WILL BE PLACED AT THE ENDS OF THE RUNWAY AND SECURED IN A MANNER APPROVED BY THE RESIDENT ENGINEER. THE PROPOSED CROSSES WILL BE PLACED WHEN THE RUNWAY IS CLOSED AND REMOVED WHEN THE RUNWAY IS RE-OPENED. THE CONTRACTOR WILL BE RESPONSIBLE FOR THE PLACEMENT AND REMOVAL OF THE CROSSES AT NO ADDITIONAL COST TO THE CONTRACT.

HEIGHT OF CONSTRUCTION EQUIPMENT

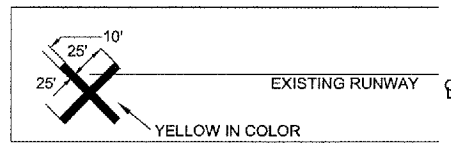
THE MAXIMUM ANTICIPATED HEIGHT OF THE CONSTRUCTION EQUIPMENT IS 20 FEET. THE TALLEST EQUIPMENT IS EXPECTED TO BE A SEMI-TRUCK WITH TRAILER IN THE UP POSITION.

AIRPORT SECURITY

AIRPORT SECURITY WILL BE MAINTAINED AT ALL TIMES. THE PROPOSED HAUL ROUTE SHOWN ON THIS SAFETY PLAN IS THE ONLY ACCESS CONTRACTOR EQUIPMENT AND PERSONNEL WILL BE ALLOWED TO USE. THE CONTRACTOR SHALL PROVIDE BARRICADES AT THIS ACCESS AND ENSURE THE BARRICADES ARE IN PLACE AT THE END OF EACH WORKING DAY.

AIRCRAFT OPERATIONAL AREA

THE CONTRACTOR, HIS EMPLOYEES, OR ANY EQUIPMENT WILL NOT PROCEED WITH ANY WORK WITHIN THE AIRCRAFT OPERATIONAL AREA WITHOUT FIRST CLOSING THE RUNWAY.



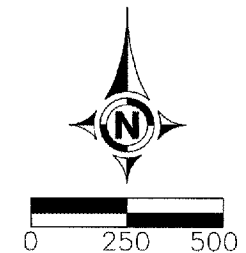
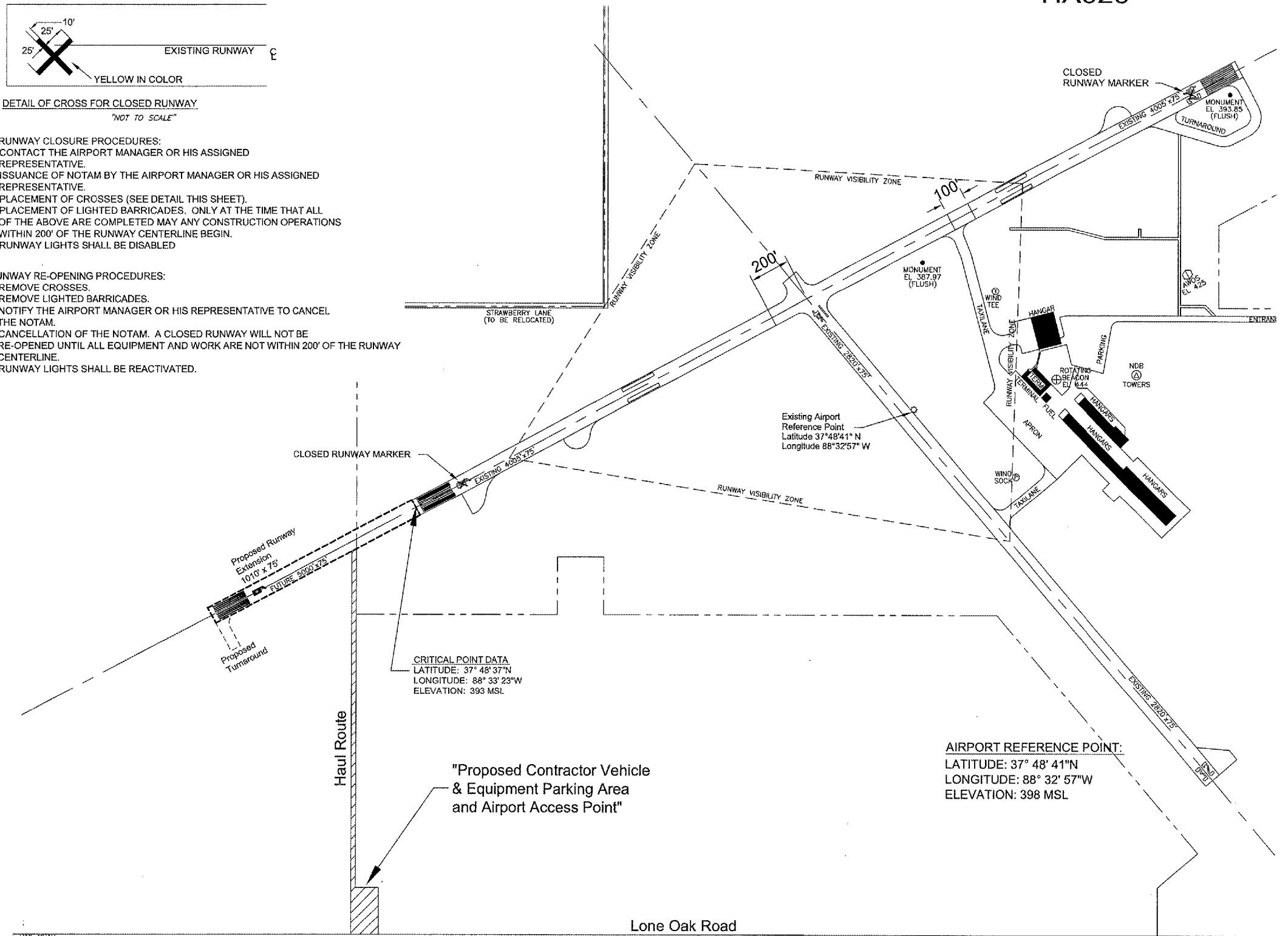
DETAIL OF CROSS FOR CLOSED RUNWAY
"NOT TO SCALE"

RUNWAY CLOSURE PROCEDURES:

- * CONTACT THE AIRPORT MANAGER OR HIS ASSIGNED REPRESENTATIVE.
- * ISSUANCE OF NOTAM BY THE AIRPORT MANAGER OR HIS ASSIGNED REPRESENTATIVE.
- * PLACEMENT OF CROSSES (SEE DETAIL THIS SHEET).
- * PLACEMENT OF LIGHTED BARRICADES. ONLY AT THE TIME THAT ALL OF THE ABOVE ARE COMPLETED MAY ANY CONSTRUCTION OPERATIONS WITHIN 200' OF THE RUNWAY CENTERLINE BEGIN.
- * RUNWAY LIGHTS SHALL BE DISABLED

RUNWAY RE-OPENING PROCEDURES:

- * REMOVE CROSSES.
- * REMOVE LIGHTED BARRICADES.
- * NOTIFY THE AIRPORT MANAGER OR HIS REPRESENTATIVE TO CANCEL THE NOTAM.
- * CANCELLATION OF THE NOTAM. A CLOSED RUNWAY WILL NOT BE RE-OPENED UNTIL ALL EQUIPMENT AND WORK ARE NOT WITHIN 200' OF THE RUNWAY CENTERLINE.
- * RUNWAY LIGHTS SHALL BE REACTIVATED.



HARRISBURG-RALEIGH AIRPORT
IL PROJECT NO. HSB-3422
AIP NO. 3-17-0050-B6
RUNWAY SAFETY PLAN
SHEET 3 OF 24
HA020