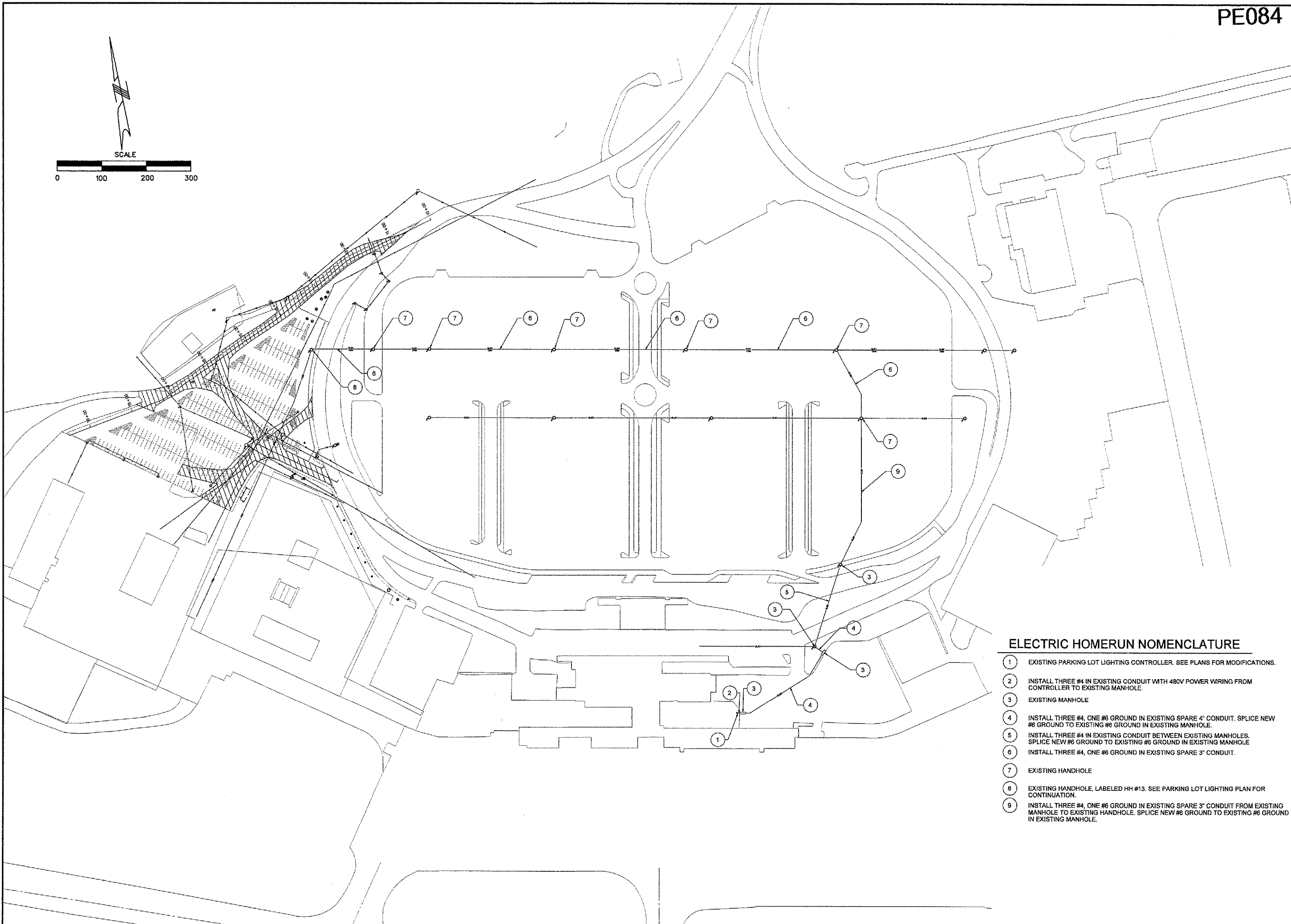
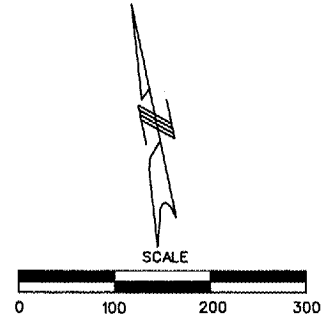


REVISIONS		
NUMBER	BY	DATE

0 1 2
THIS BAR IS EQUAL TO 2"
AT FULL SCALE (34X22).
PLOT 1



ELECTRIC HOMERUN NOMENCLATURE

- 1 EXISTING PARKING LOT LIGHTING CONTROLLER. SEE PLANS FOR MODIFICATIONS.
- 2 INSTALL THREE #4 IN EXISTING CONDUIT WITH 480V POWER WIRING FROM CONTROLLER TO EXISTING MANHOLE.
- 3 EXISTING MANHOLE
- 4 INSTALL THREE #4, ONE #6 GROUND IN EXISTING SPARE 4" CONDUIT. SPLICE NEW #6 GROUND TO EXISTING #6 GROUND IN EXISTING MANHOLE.
- 5 INSTALL THREE #4 IN EXISTING CONDUIT BETWEEN EXISTING MANHOLES. SPLICE NEW #6 GROUND TO EXISTING #6 GROUND IN EXISTING MANHOLE.
- 6 INSTALL THREE #4, ONE #6 GROUND IN EXISTING SPARE 3" CONDUIT.
- 7 EXISTING HANDHOLE
- 8 EXISTING HANDHOLE, LABELED HH #13. SEE PARKING LOT LIGHTING PLAN FOR CONTINUATION.
- 9 INSTALL THREE #4, ONE #6 GROUND IN EXISTING SPARE 3" CONDUIT FROM EXISTING MANHOLE TO EXISTING HANDHOLE. SPLICE NEW #6 GROUND TO EXISTING #6 GROUND IN EXISTING MANHOLE.

G R E A T E R
Peoria
R E G I O N A L
Airport

**CONSTRUCT, LIGHT & MARK
WEST LONG TERM PARKING LOT**

CMT
CRAWFORD, MURPHY & TILLY, INC.
CONSULTING ENGINEERS

IL PROJECT NUMBER
PIA-3385

FILE:
DESIGN BY: WDP
DRAWN BY: JSP
CHECKED BY: BWG
APPROVED BY: CET
DATE: JUNE 17, 2005
JOB No: 05061-03-00

05/26/2005 K:\Peoria\0506103\Draw\Sheets\26_LIGHTING_HOMERUN.dgn