


NOTES

- 1) IT IS CONTRACTOR'S RESPONSIBILITY TO FIELD VERIFY THE LOCATION OF EXISTING UTILITIES. ANY DAMAGE TO EXISTING UTILITIES SHALL BE REPAIRED IMMEDIATELY AT THE CONTRACTOR'S EXPENSE.
- 2) CONNECTION TO EXISTING STORM SEWER AND ALL OTHER MISCELLANEOUS ITEMS REQUIRED FOR THIS WORK SHALL BE CONSIDERED INCIDENTAL TO PAY ITEM "AR751560 MANHOLE 6" ".
- 3) SEE DRAINAGE DETAIL SHEET FOR INLET INFORMATION.
- 4) TOPSOIL AT ALL SODDED AREAS SHALL BE PAID FOR UNDER PAY ITEM "AR905520, TOPSOILING (FROM OFF SITE)".
- 5) TOPSOIL SHALL BE PLACED A MINIMUM OF 4" AT ALL LANDSCAPING AREAS. UNCLASSIFIED EXCAVATION SHALL BE USED TO BALANCE THE TOPSOIL QUANTITY. PLACEMENT OF THE TOPSOIL SHALL BE CONSIDERED INCIDENTAL TO THE CONTRACT.

**R0010
TOTAL SHEETS = 24**



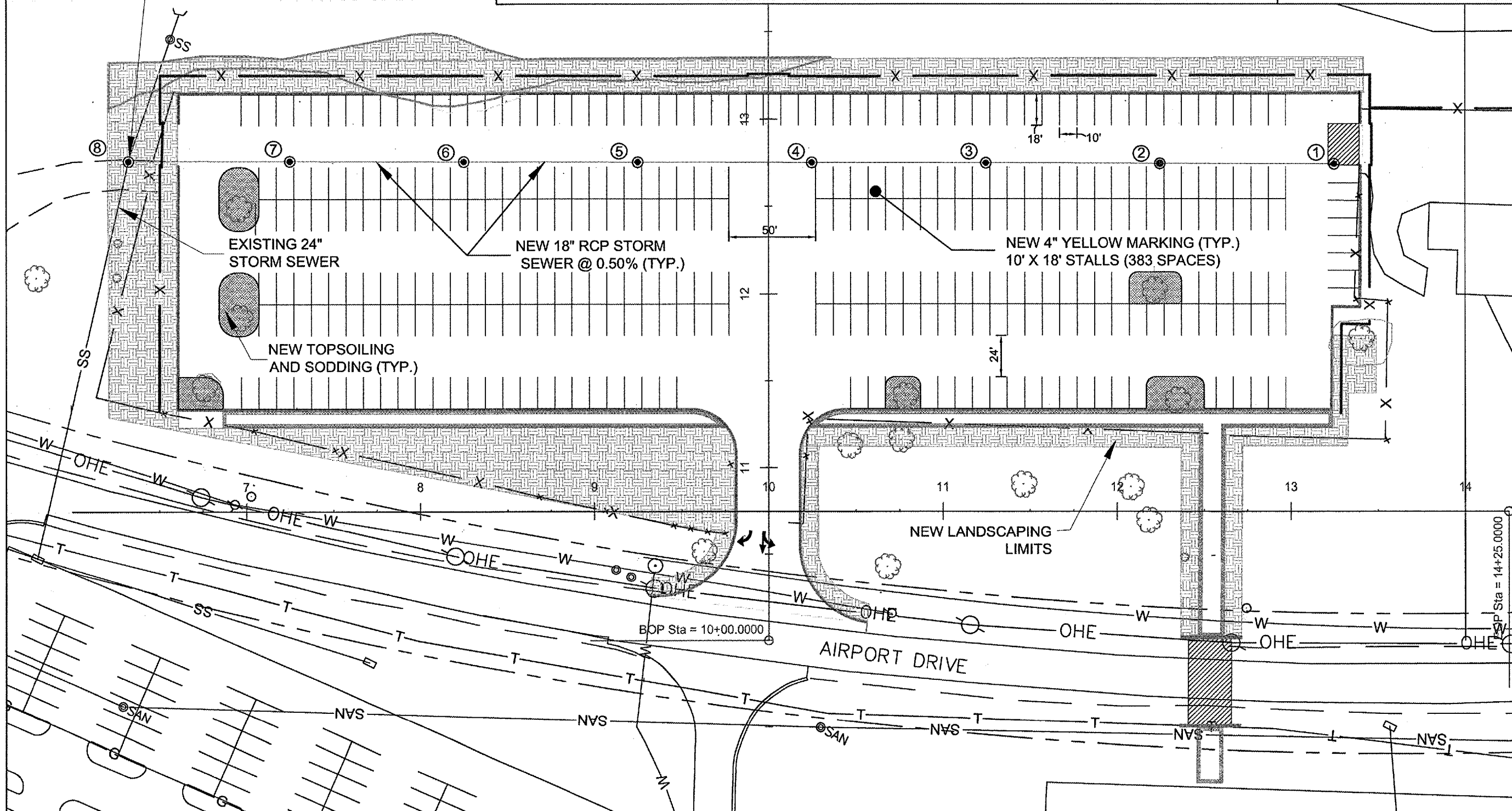
LEGEND

-  LANDSCAPING LIMITS
-  TOPSOILING / SODDING
-  NEW A-6 MANHOLE
-  NEW 18" STORM SEWER

| REVISIONS | | |
|-----------|----|------|
| NUMBER | BY | DATE |
| | | |
| | | |
| | | |

0 1
THIS BAR IS EQUAL TO 1" AT FULL SCALE (17 X 11).

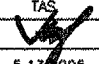
SEE NOTE 2



**GREATER ROCKFORD AIRPORT AUTHORITY
ROCKFORD, ILLINOIS**
ILLINOIS PROJECT, RFD-2820
**NORTH AND WEST AUTO PARKING
PROPOSED DRAINAGE / MARKING
AND LANDSCAPING PLAN**

CMT
CRAWFORD, MURPHY & TILLY, INC.
CONSULTING ENGINEERS

**Northwest
Chicago
International
Airport**
RFD

DESIGN BY: TAS
 DRAWN BY: CMT
 CHECKED BY: TAS
 APPROVED BY: 
 DATE: 5.13.2005
 JOB No: 05258-04-00