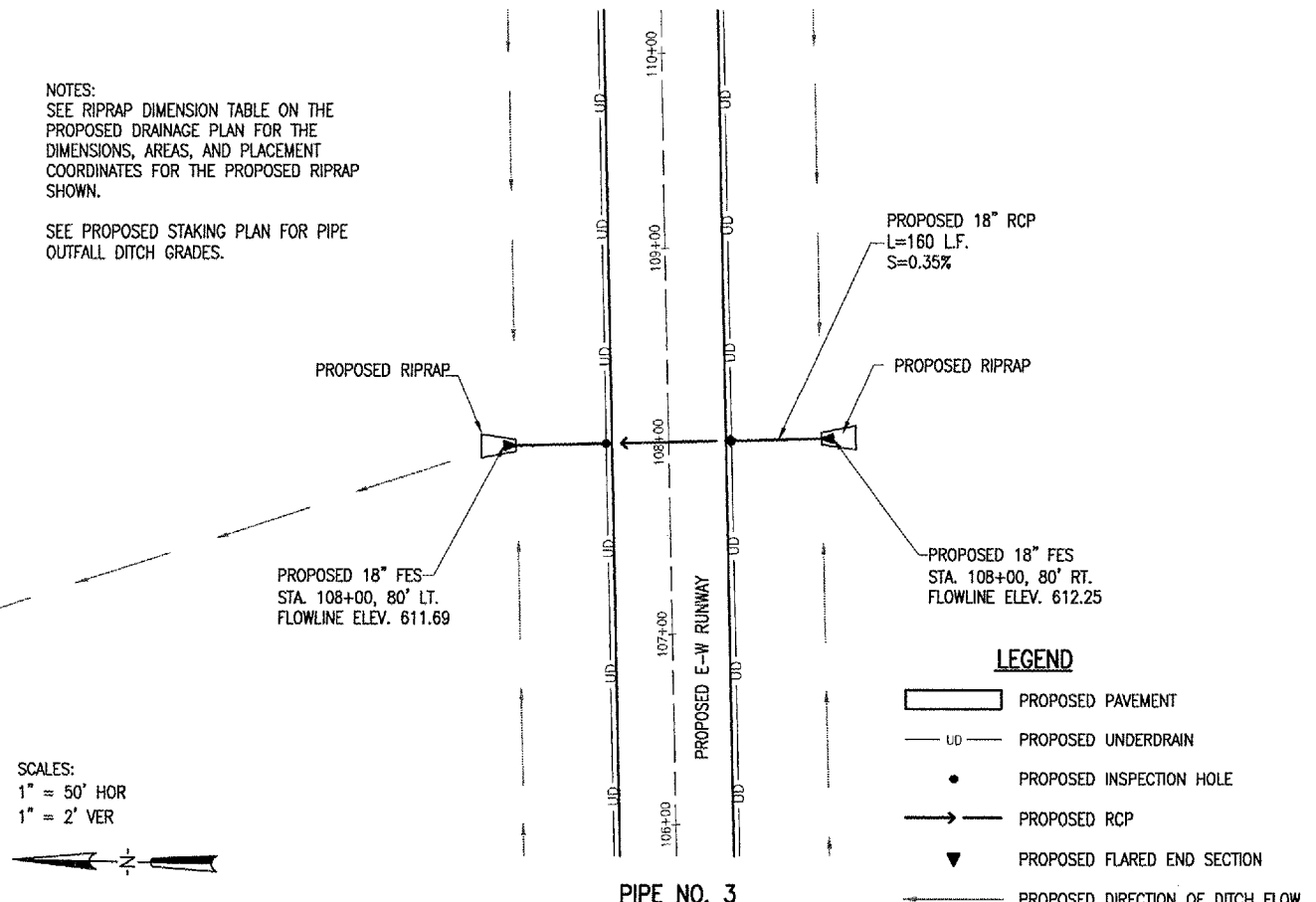


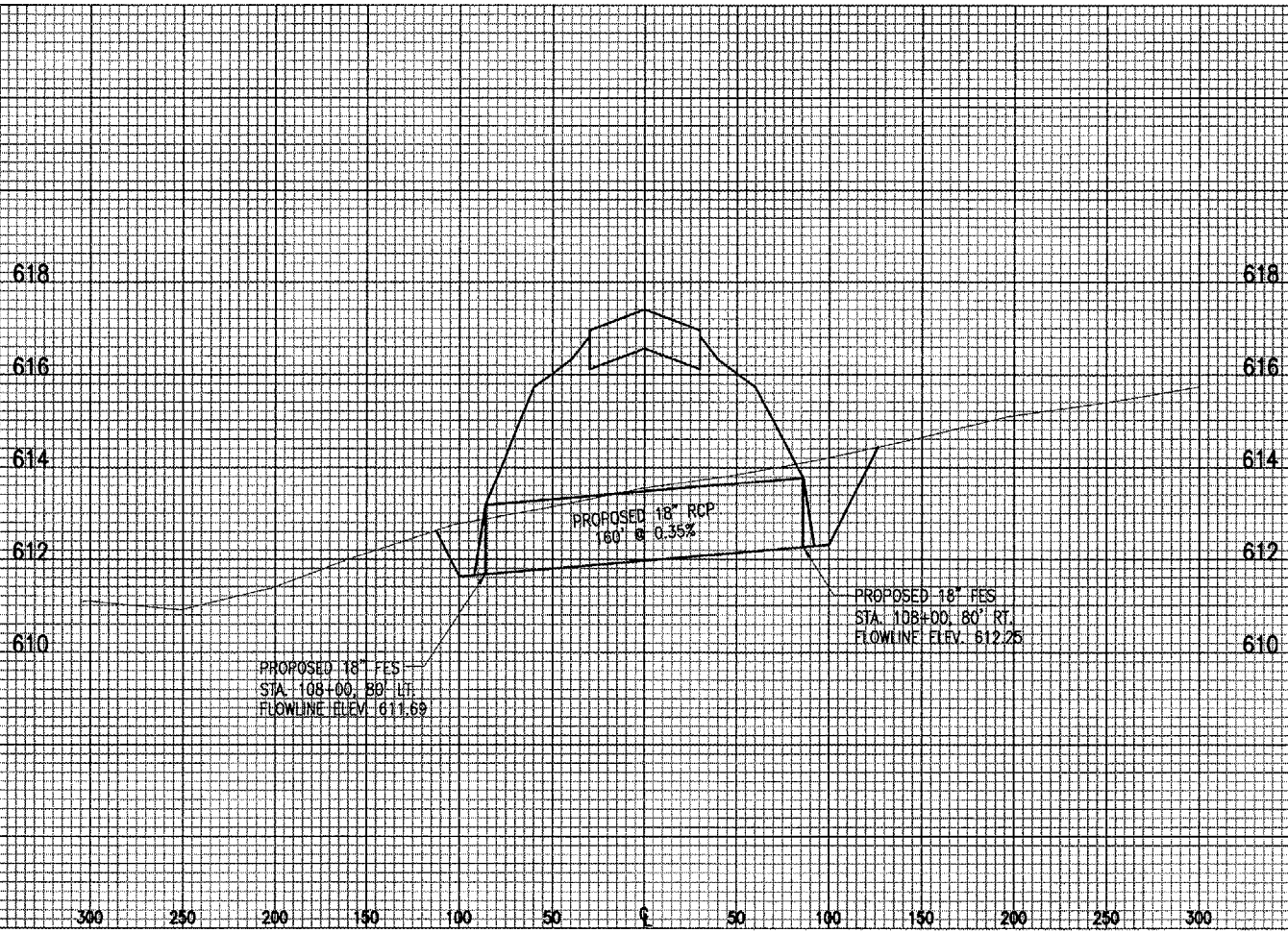
NOTES:
SEE RIPRAP DIMENSION TABLE ON THE PROPOSED DRAINAGE PLAN FOR THE DIMENSIONS, AREAS, AND PLACEMENT COORDINATES FOR THE PROPOSED RIPRAP SHOWN.

SEE PROPOSED STAKING PLAN FOR PIPE OUTFALL DITCH GRADES.



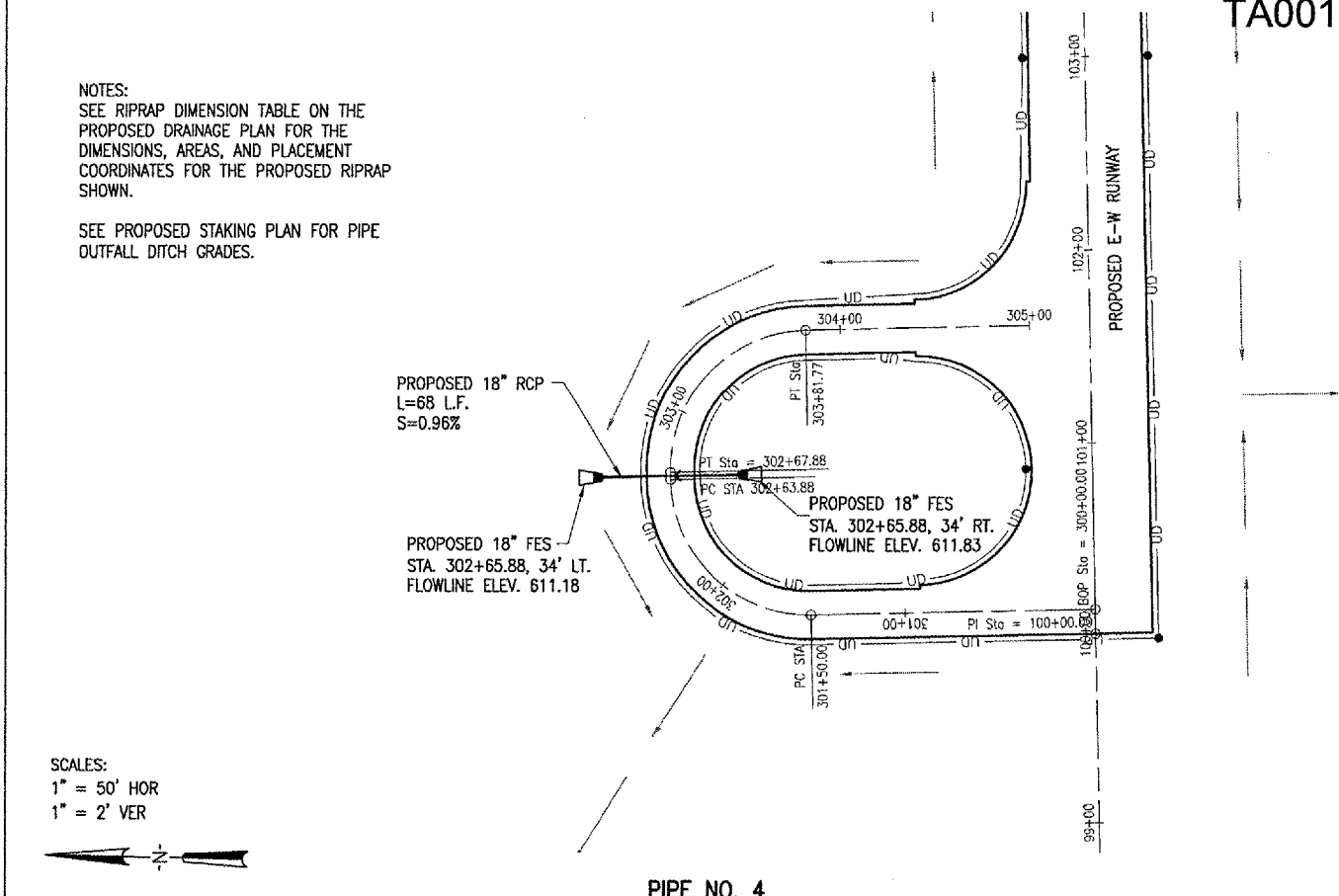
SCALES:
1" = 50' HOR
1" = 2' VER

- LEGEND**
- PROPOSED PAVEMENT
 - PROPOSED UNDERDRAIN
 - PROPOSED INSPECTION HOLE
 - PROPOSED RCP
 - PROPOSED FLARED END SECTION
 - PROPOSED DIRECTION OF DITCH FLOW

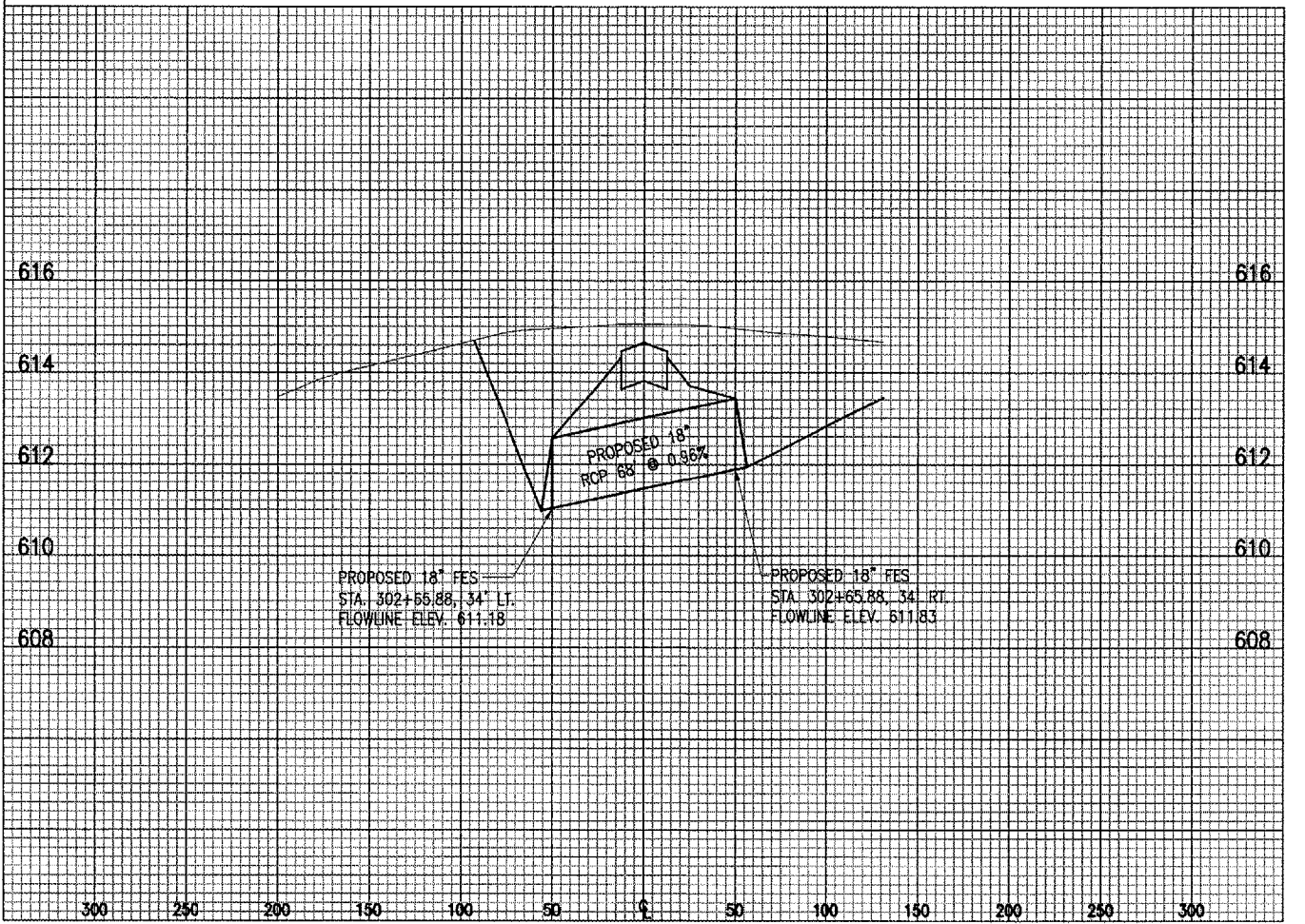


NOTES:
SEE RIPRAP DIMENSION TABLE ON THE PROPOSED DRAINAGE PLAN FOR THE DIMENSIONS, AREAS, AND PLACEMENT COORDINATES FOR THE PROPOSED RIPRAP SHOWN.

SEE PROPOSED STAKING PLAN FOR PIPE OUTFALL DITCH GRADES.



SCALES:
1" = 50' HOR
1" = 2' VER



TA001

DATE	REVISION	BY

TAYLORVILLE MUNICIPAL AIRPORT
TAYLORVILLE, ILLINOIS

IL. PROJ.: TAZ-3166 A.I.P. PROJ.: 3-17-0100-87

ILL. Project No. 828-03RWYCD 0800 Filename: R-710PAP-PIPE.DWG Scale: H, 1" = 50' V, 1" = 2' Date: 3/8/05	LAYOUT RAW 3/8/05 BAK 3/8/05 CAH 3/28/05
---	---



Hanson Professional Services Inc.
1625 South Sixth Street
Springfield, Illinois 62702-2886
Offices Nationwide

CONSTRUCT
RUNWAY 9-27
PROPOSED
DRAINAGE PIPE NO. 3 & 4
PLAN & PROFILE

MAY 04, 2005 4:19 PM RAW
F:\AIRPORTS\TAYLORVILLE\828-03RWYCD\AIRPORT SHEETS\R-710PAP-PIPE.DWG - PIPE NO. 3 & 4