

**NOTE**

THE PROPOSED P.L.A.S.I. UNITS WILL BE LOCATED AT 80' LT. STA. 104+75 AND 80' RT. STA. 130+25 ALONG RUNWAY 9/27

THE PROPOSED P.L.A.S.I. CONCRETE BASES WILL BE CONSTRUCTED AS SHOWN IN THE DETAIL ON THIS SHEET.

THE CONCRETE FOR THE PROPOSED P.L.A.S.I. BASES WILL BE CLASS "X" AS SPECIFIED BY I.D.O.T.

THE POWER CABLES WILL BE NO. 6 600 V., 3/C, TYPE C UNDERGROUND CABLE IN UNIT DUCT.

THE POWER CABLES WILL BE PLACED A MINIMUM OF 24" BELOW THE FINISHED GRADE AND LOCATED AS SHOWN ON SHEET NOS. 49, 50, & 51.

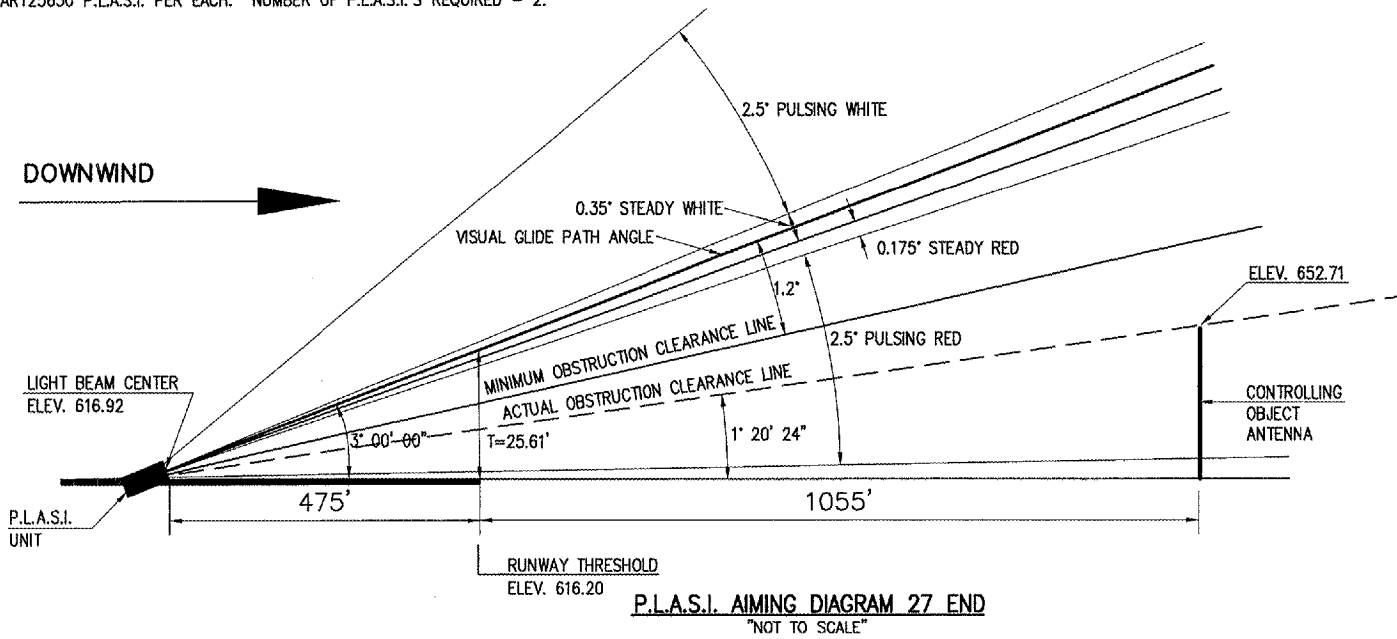
THE PROPOSED POWER CABLES WILL BE CONNECTED TO A POWER SOURCE INSIDE THE PROPOSED VAULT. WIRE ALL PROPOSED EQUIPMENT IN ACCORDANCE WITH THE SCHEMATIC WIRING DIAGRAM.

THE PROPOSED P.L.A.S.I. UNITS WILL BE AS MANUFACTURED BY DEVORE AVIATION CORPORATION, CAT. NO. DA500100 P.L.A.S.I., OR APPROVED EQUAL.

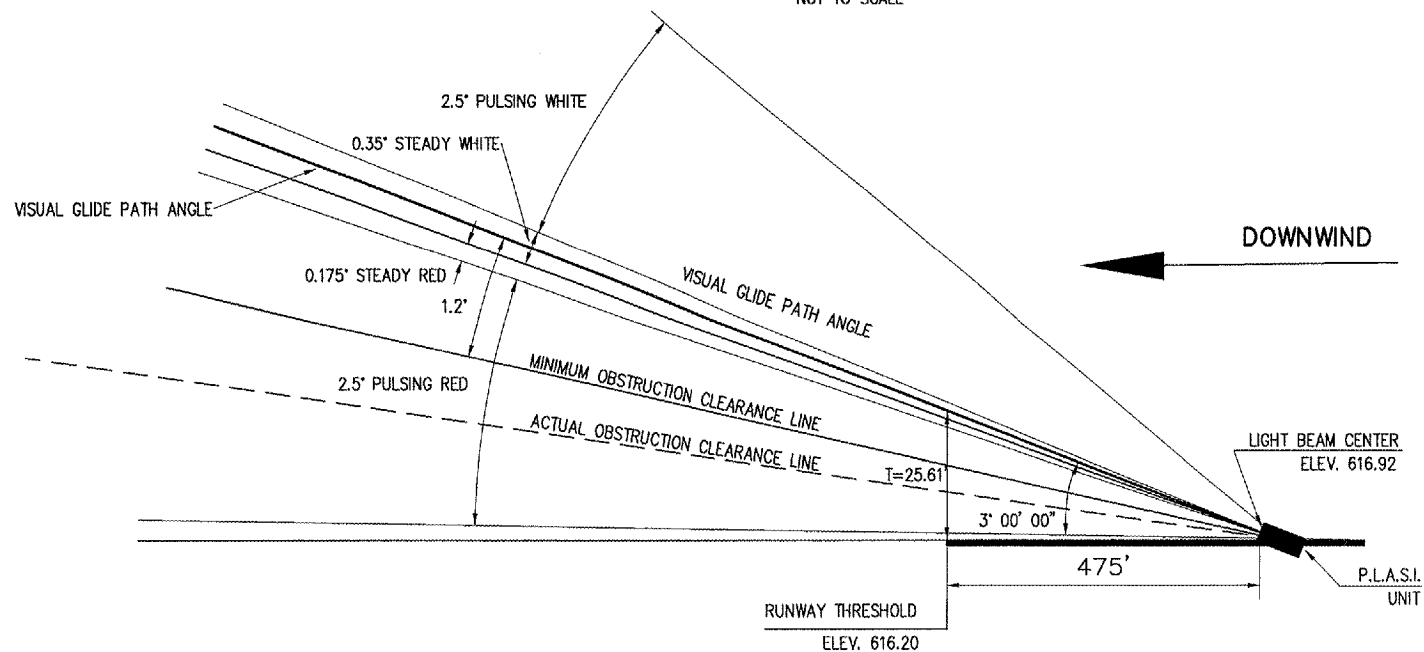
THE CONTRACTOR WILL BE REQUIRED TO INSTALL A BUCK-BOOST TRANSFORMER FOR RUNWAY 27 P.L.A.S.I. UNIT. THE CONTRACTOR WILL INSTALL THE PROPER SIZE BUCK-BOOST TRANSFORMER TO PROVIDE THE MANUFACTURER'S RECOMMENDED VOLTAGE AT THE P.L.A.S.I. UNIT. THE CONTRACTOR WILL BE REQUIRED TO INSTALL A STEP/UP STEP/DOWN TRANSFORMER FOR RUNWAY 9 P.L.A.S.I. UNITS IN ACCORDANCE WITH THESE PLANS & SPECIFICATIONS.

INSTALLATION OF THE P.L.A.S.I. UNITS, P.L.A.S.I. BASES AND ALL INCIDENTALS WILL BE PAID FOR UNDER ITEM: AR125630 P.L.A.S.I. PER EACH. NUMBER OF P.L.A.S.I.'S REQUIRED - 2.

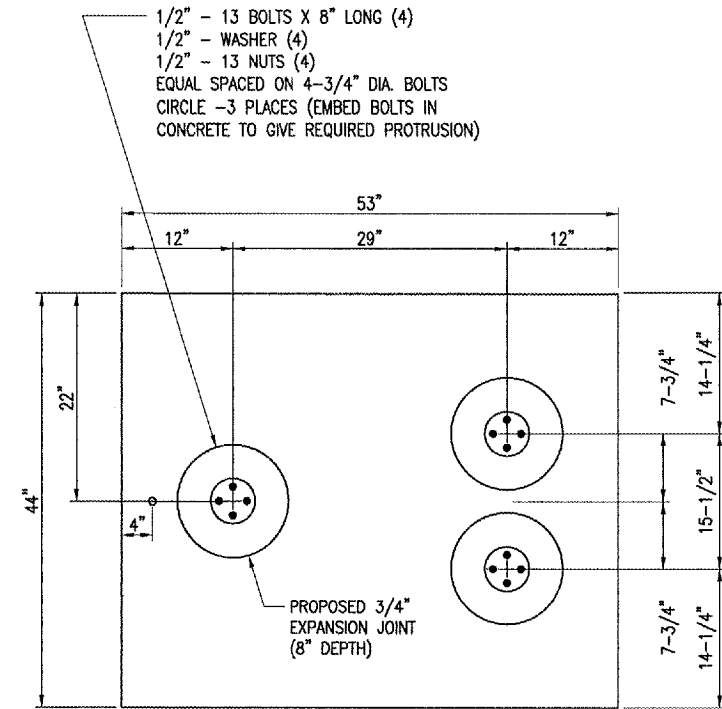
TA001



**P.L.A.S.I. AIMING DIAGRAM 27 END**  
"NOT TO SCALE"

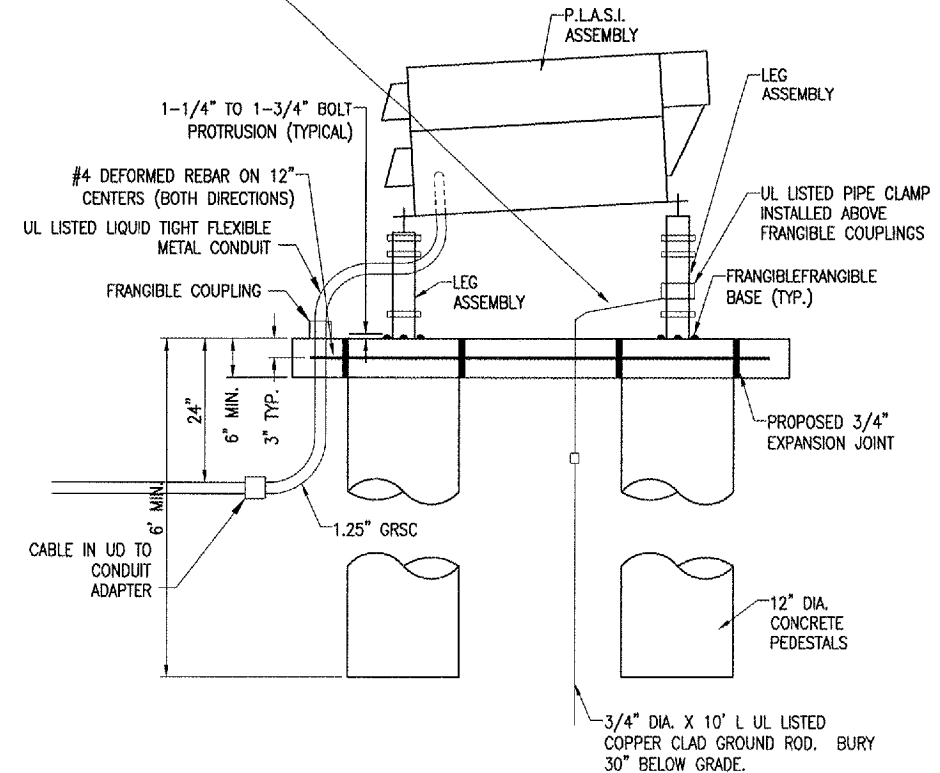


**P.L.A.S.I. AIMING DIAGRAM 9 END**  
"NOT TO SCALE"



**NOTE**  
VERIFY ALL DIMENSIONS AND LAYOUT WITH THE PLASI MANUFACTURER

#6 AWG BARE STRANDED COPPER GROUNDING ELECTRODE CONDUCTOR. CONNECT TO PLASI HOUSING PER THE PLASI MANUFACTURER RECOMMENDATION OR TO PLASI LEG WITH PIPE CLAMP. VERIFY METHOD OF CONNECTION WITH PLASI MANUFACTURER. CONNECT TO GROUND ROD WITH EXOTHERMIC WELD.



REVISION	DATE	BY

TAYLORVILLE MUNICIPAL AIRPORT  
TAYLORVILLE, ILLINOIS  
A.I.P. PROJ.: 3-17-0100-B7  
IL PROJ.: IAZ-3166

FILE	DATE	BY	REVIEWED
RAW	02/14/05	CAH	xx/xx/xx
BAK	02/14/05		
DRAWN			
REVIEWED			



CONSTRUCT  
RUNWAY 9-27  
PROPOSED  
PLASI DETAILS  
& NOTES

MAY 05, 2005 8:42 PM RAW  
I:\AIRPORTS\TAYLORVILLE\828-03RWY\GD\AIRPORT\SHSHEETS\R-54BELE.DWG - Layout1