

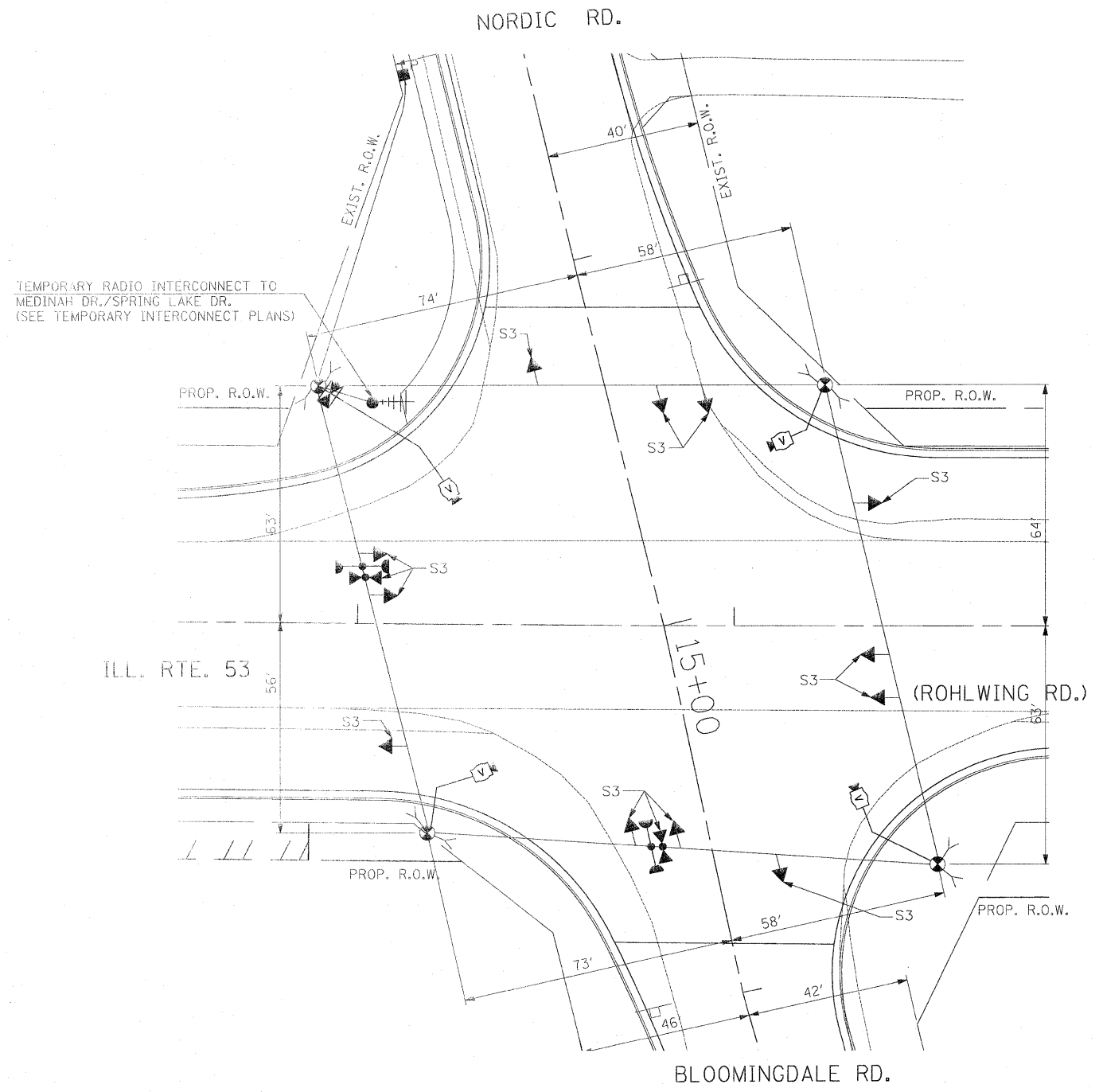
TEMPORARY RADIO INTERCONNECT TO MEDINAH DR./SPRING LAKE DR. (SEE TEMPORARY INTERCONNECT PLANS)

ILL. RTE. 53

BLOOMINGDALE RD.

SIGNAL HEAD PLACEMENTS FOR STAGES: S2-1, S2-2, AND S2-3.

THE TRAFFIC SIGNAL CONTROL EQUIPMENT FOR THIS PROJECT SHALL BE "ECONOLITE" TO MATCH THE EXISTING ADJACENT SYSTEM.



TEMPORARY RADIO INTERCONNECT TO MEDINAH DR./SPRING LAKE DR. (SEE TEMPORARY INTERCONNECT PLANS)

ILL. RTE. 53

BLOOMINGDALE RD.

SIGNAL HEAD PLACEMENTS FOR STAGE: S3

NOTE: THE VIDEO DETECTION ZONES SHOWN ON THE PLANS ARE FOR CONSTRUCTION STAGE 1 - SUBSTAGE 1 AND SHALL BE REDEFINED FOR EACH CONSTRUCTION STAGE AS A PART OF "TEMPORARY TRAFFIC SIGNAL INSTALLATION" WORK.

FILE NAME =	USER NAME = #USER#	DESIGNED - PKG	REVISED
#FILE#		DRAWN - MAA, EA	REVISED -
	PLOT SCALE = #SCALE#	CHECKED - PKG, EA	REVISED -
	PLOT DATE = #DATE#	DATE - 5/18/2011	REVISED -

STATE OF ILLINOIS
DEPARTMENT OF TRANSPORTATION

TEMPORARY TRAFFIC SIGNAL INSTALLATION AND REMOVAL PLAN			
ILLINOIS ROUTE 53 (ROHLWING RD.) AT NORDIC RD./BLOOMINGDALE RD. STAGE 2 AND STAGE 3 (SHEET 3 OF 4)			
SCALE: 1"=20'	SHEET NO. OF SHEETS	STA. TO STA.	

F.A.P. RTE.	SECTION	COUNTY	TOTAL SHEETS	SHEET NO.
2578	532B	DuPage	781	468
FED. ROAD DIST. NO. - ILLINOIS FED. AID PROJECT			CONTRACT NO. 60477	

Rev. 6-8-11