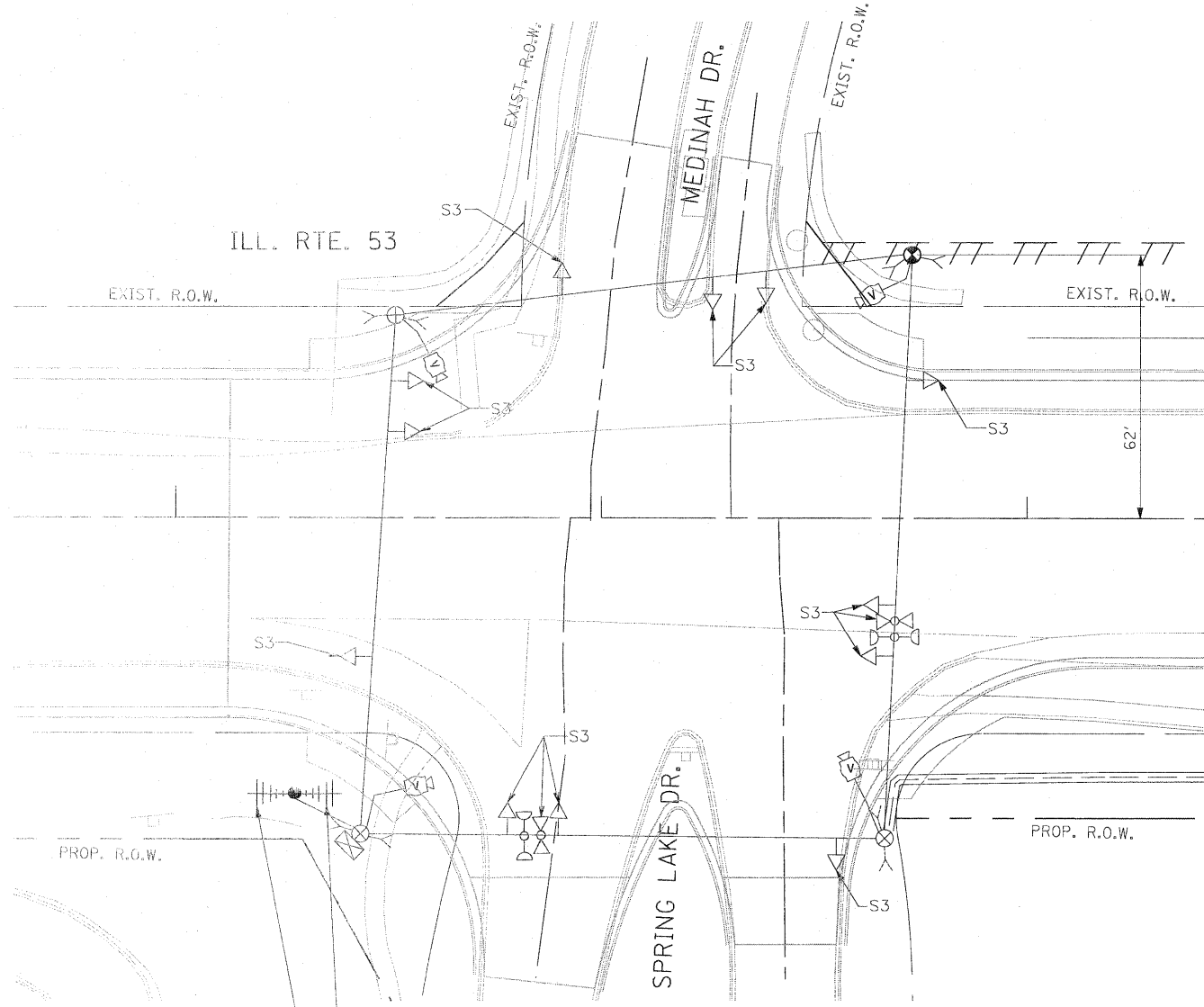


SIGNAL HEAD PLACEMENTS FOR STAGE: S2

TEMPORARY RADIO INTERCONNECT TO NORDIC RD. (SEE TEMPORARY INTERCONNECT PLANS)

TEMPORARY RADIO INTERCONNECT TO IRVING PARK RD. (SEE TEMPORARY INTERCONNECT PLANS)



SIGNAL HEAD PLACEMENTS FOR STAGE: S3

TEMPORARY RADIO INTERCONNECT TO NORDIC RD. (SEE TEMPORARY INTERCONNECT PLANS)

TEMPORARY RADIO INTERCONNECT TO IRVING PARK RD. (SEE TEMPORARY INTERCONNECT PLANS)

NOTE 1: THE VIDEO DETECTION ZONES SHOWN ON THE PLANS ARE FOR CONSTRUCTION STAGE 1 - YEAR 2 AND SHALL BE REDEFINED FOR EACH CONSTRUCTION STAGE AS A PART OF "TEMPORARY TRAFFIC SIGNAL INSTALLATION" WORK.

NOTE 2: THE SIGNAL HEAD PLACEMENT FOR MEDINAH/SPRING LAKE DRIVE FOR CONSTRUCTION STAGES S2 AND S3 SHALL BE DETERMINED IN FIELD BY THE CONTRACTOR DEPENDING ON THE CONSTRUCTION STAGING USED BY THE CONTRACTOR FOR MEDINAH/SPRING LAKE DRIVE.

THE TRAFFIC SIGNAL CONTROL EQUIPMENT FOR THIS PROJECT SHALL BE "ECONOLITE" TO MATCH THE EXISTING ADJACENT SYSTEM.

Rev. 6-8-11

FILE NAME = #FILE#	USER NAME = #USER#	DESIGNED - PKG	REVISED -	<b>STATE OF ILLINOIS DEPARTMENT OF TRANSPORTATION</b>	<b>TEMPORARY TRAFFIC SIGNAL, MODIFICATION PLAN, AND REMOVAL PLAN ILLINOIS ROUTE 53 (ROHLWING RD.) AT MEDINAH DR./SPRING LAKE DR. STAGE 2 AND STAGE 3 (SHEET 3 OF 4)</b>	F.A.P. RTE. 2578	SECTION 532B	COUNTY DuPage	TOTAL SHEETS 781	SHEET NO. 473		
	PLOT SCALE = #SCALE#	CHECKED - PKG, EA	REVISED -			SCALE: 1"=20'	SHEET NO. OF SHEETS STA.	TO STA.	CONTRACT NO. 60477			
	PLOT DATE = #DATE#	DATE - 5/18/2011	REVISED -			FED. ROAD DIST. NO. ILLINOIS FED. AID PROJECT						
Rev. 6-8-11												