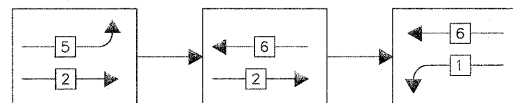


TEMPORARY PHASE DESIGNATION DIAGRAM

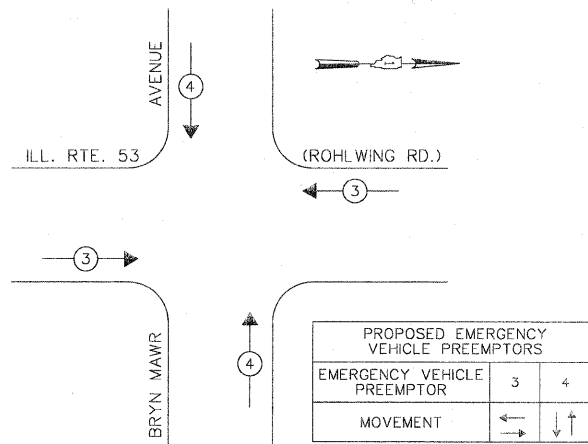
STAGES: PRE-STAGE, S1-1, S1-2, S1-3, S2-1, S2-2, S3, AND AFTER PROPOSED GEOMETRICS ARE BUILT

FOR PHASES 1, 2, 5, & 6 IN THE PHASE DESIGNATION DIAGRAM SHOWN ABOVE, THE FOLLOWING PHASE SEQUENCE SHALL BE FOLLOWED FOR STAGES S1-2, S2-2, AND S3.

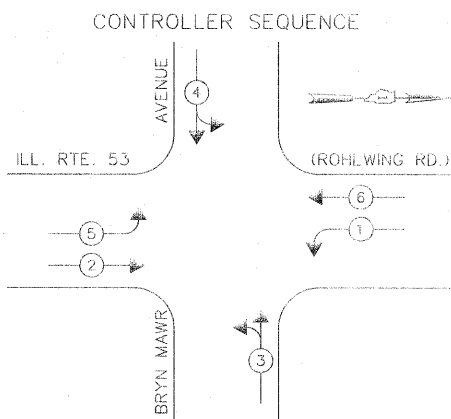
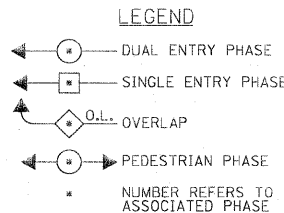


PHASES 3, 4, 7 & 8 SHALL FOLLOW THE STANDARD SEQUENCE IN ACCORDANCE WITH STATE STANDARD 857001

EMERGENCY VEHICLE PREEMPTION SEQUENCE



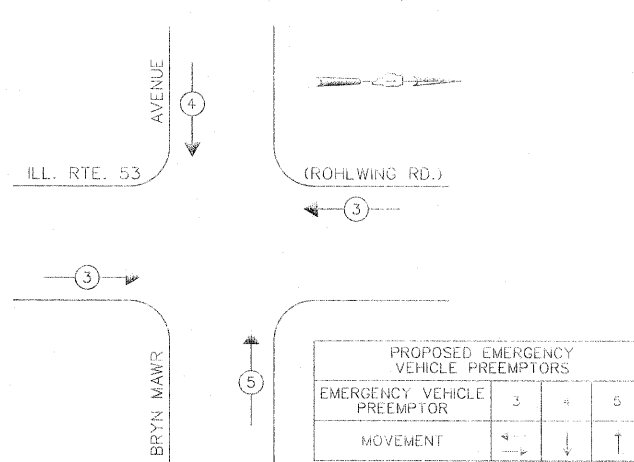
STAGES: PRE-STAGE, S1-1, S1-3, S2-1, S2-3, AND AFTER PROPOSED GEOMETRICS ARE BUILT



TEMPORARY PHASE DESIGNATION DIAGRAM

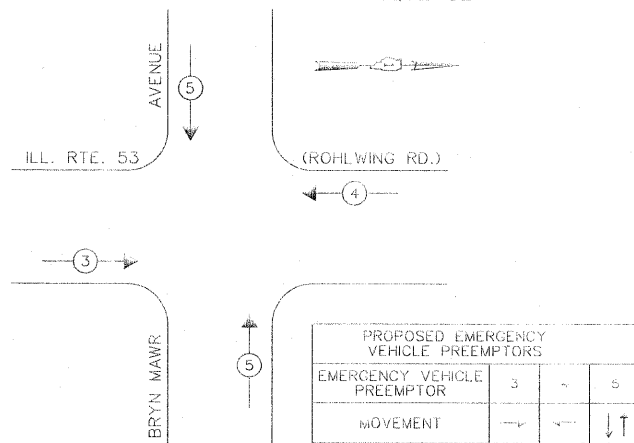
STAGES: STAGE 2 - SUBSTAGE 3

EMERGENCY VEHICLE PREEMPTION SEQUENCE

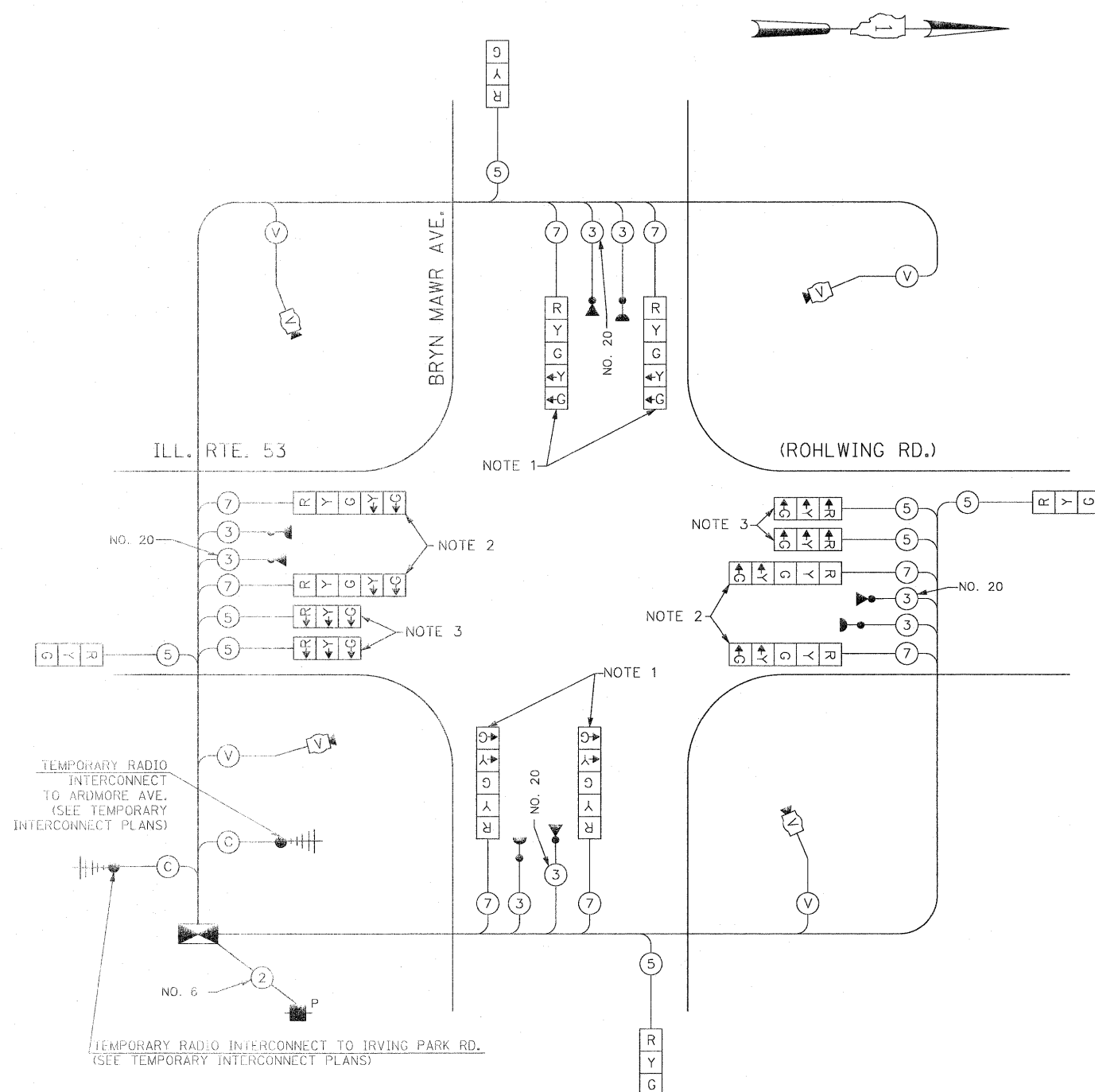


STAGES: STAGE 2 - SUBSTAGE 3

EMERGENCY VEHICLE PREEMPTION SEQUENCE



STAGES: S1-2, S2-2, AND S3



TEMPORARY CABLE PLAN

(NOT TO SCALE)

STAGES: PRE-STAGE, S1-1, S1-2, S1-3, S2-1, S2-2, S2-3, S3, AND AFTER PROPOSED GEOMETRICS ARE BUILT

NOTE 1: THE LEFT TURN YELLOW ARROW INDICATION SECTIONS FOR BRYN MAWR AVENUE SHALL BE DISCONNECTED AND BAGGED DURING CONSTRUCTION STAGE 2 - SUBSTAGE 3.

NOTE 2: THE GREEN AND YELLOW LEFT TURN ARROW INDICATION SECTIONS IN THE 5-SECTION SIGNAL HEADS FOR THE NORTHBOUND AND SOUTHBOUND DIRECTIONS OF TRAFFIC SHALL BE DISCONNECTED AND BAGGED DURING CONSTRUCTION STAGES S1-2, S2-2, AND S3.

NOTE 3: THE 3-SECTION SIGNAL HEADS WITH ALL LEFT TURN ARROW INDICATIONS SHALL BE NEEDED ONLY DURING CONSTRUCTION STAGES S1-2, S2-2, AND S3. THEY WILL BE DISCONNECTED AND BAGGED DURING OTHER CONSTRUCTION STAGES.

THE TRAFFIC SIGNAL CONTROL EQUIPMENT FOR THIS PROJECT SHALL BE "ECONOLITE" TO MATCH THE EXISTING ADJACENT SYSTEM.

I.D.O.T. TRAFFIC SIGNAL INSTALLATION ELECTRICAL SERVICE REQUIREMENTS					TOTAL WATTAGE
TYPE	NO LAMPS	WATTAGE		%OPERATION	
		INCAND.	LED		
SIGNAL (RED)	12	135	17	0.50	102
(YELLOW)	12	135	25	0.25	75
(GREEN)	12	135	15	0.25	45
ARROW	16	135	12	0.10	19.2
PED. SIGNAL		90	25	1.00	
CONTROLLER	1	100	100	1.00	100
ILLUM. SIGN			25	0.05	
VIDEO SYSTEM	1	150		1.00	150
FLASHER				0.50	
ENERGY COSTS TO:				TOTAL =	491.2
VILLAGE OF ITASCA 550 WEST IRVING PARK ROAD ITASCA, ILLINOIS 60143-1795					
ENERGY SUPPLY CONTACT: CURTIS TOPPS PHONE: (630) 691-4356 COMPANY: COMMONWEALTH EDISON					

Rev. 6-8-11