

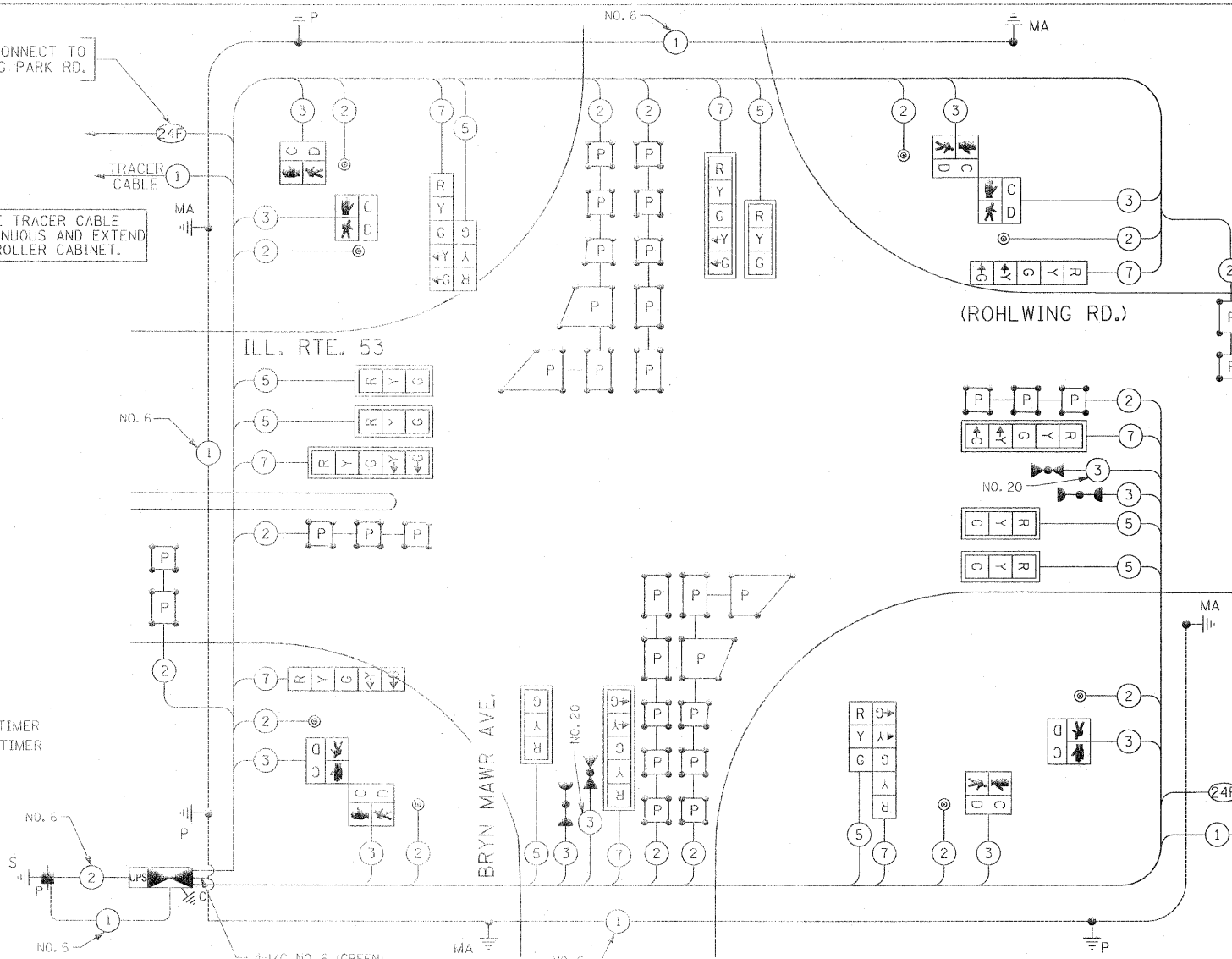
SCHEDULE OF QUANTITIES

QUANTITY	UNIT	ITEM
15	SQ FT	SIGN PANEL - TYPE 1
22.5	SQ FT	SIGN PANEL - TYPE 2
552	FOOT	CONDUIT IN TRENCH, 2" DIA., GALVANIZED STEEL
54	FOOT	CONDUIT IN TRENCH, 2 1/2" DIA., GALVANIZED STEEL
83	FOOT	CONDUIT IN TRENCH, 3" DIA., GALVANIZED STEEL
25	FOOT	CONDUIT IN TRENCH, 4" DIA., GALVANIZED STEEL
172	FOOT	CONDUIT PUSHED, 2" DIA., GALVANIZED STEEL
501	FOOT	CONDUIT PUSHED, 4" DIA., GALVANIZED STEEL
4	EACH	HANDHOLE
2	EACH	HEAVY-DUTY HANDHOLE
2	EACH	DOUBLE HANDHOLE
670	FOOT	TRENCH AND BACKFILL FOR ELECTRICAL WORK
1	EACH	FULL-ACTUATED CONTROLLER AND TYPE IV CABINET, SPECIAL
1	EACH	TRANSCEIVER-FIBER OPTIC
1493	FOOT	ELECTRIC CABLE IN CONDUIT, SIGNAL NO. 14 2C
1865	FOOT	ELECTRIC CABLE IN CONDUIT, SIGNAL NO. 14 3C
1790	FOOT	ELECTRIC CABLE IN CONDUIT, SIGNAL NO. 14 5C
1780	FOOT	ELECTRIC CABLE IN CONDUIT, SIGNAL NO. 14 7C
1797	FOOT	ELECTRIC CABLE IN CONDUIT, LEAD-IN, NO. 14 1 PAIR
51	FOOT	ELECTRIC CABLE IN CONDUIT, SERVICE, NO. 6 2C
3	EACH	TRAFFIC SIGNAL POST, GALVANIZED STEEL 16 FT.
1	EACH	STEEL MAST ARM ASSEMBLY AND POLE, 42 FT.
1	EACH	STEEL MAST ARM ASSEMBLY AND POLE, 46 FT.
1	EACH	STEEL MAST ARM ASSEMBLY AND POLE, 50 FT.
1	EACH	STEEL MAST ARM ASSEMBLY AND POLE, 54 FT.
12	FOOT	CONCRETE FOUNDATION, TYPE A
4	FOOT	CONCRETE FOUNDATION, TYPE C
56	FOOT	CONCRETE FOUNDATION, TYPE E 36-INCH DIAMETER
6	EACH	SIGNAL HEAD, LED, 1-FACE, 3-SECTION, MAST ARM MOUNTED
2	EACH	SIGNAL HEAD, LED, 1-FACE, 5-SECTION, BRACKET MOUNTED
4	EACH	SIGNAL HEAD, LED, 1-FACE, 5-SECTION, MAST ARM MOUNTED
2	EACH	SIGNAL HEAD, LED, 2-FACE, 1-3 SECTION, 1-5 SECTION, BRACKET MOUNTED
4	EACH	PEDESTRIAN SIGNAL HEAD, LED, 1-FACE, BRACKET MOUNTED WITH COUNTDOWN TIMER
2	EACH	PEDESTRIAN SIGNAL HEAD, LED, 2-FACE, BRACKET MOUNTED WITH COUNTDOWN TIMER
10	EACH	TRAFFIC SIGNAL BACKPLATE, LOUVERED, ALUMINUM
8	EACH	INDUCTIVE LOOP DETECTOR
8	EACH	PEDESTRIAN PUSH-BUTTON
1	EACH	TEMPORARY TRAFFIC SIGNAL INSTALLATION
2	EACH	RELOCATE EXISTING EMERGENCY VEHICLE PRIORITY SYSTEM, DETECTOR UNIT
1	EACH	RELOCATE EXISTING EMERGENCY VEHICLE PRIORITY SYSTEM, PHASING UNIT
1	EACH	REMOVE EXISTING TRAFFIC SIGNAL EQUIPMENT
10	EACH	REMOVE EXISTING HANDHOLE
9	EACH	REMOVE EXISTING CONCRETE FOUNDATION
1290	FOOT	PREFORMED DETECTOR LOOP
1	EACH	TEMPORARY TRAFFIC SIGNAL TIMING
1	EACH	SERVICE INSTALLATION - POLE MOUNTED
1	EACH	UNINTERRUPTIBLE POWER SUPPLY
667	FOOT	ELECTRIC CABLE IN CONDUIT, GROUNDING, NO. 6 1C
317	FOOT	ELECTRIC CABLE IN CONDUIT NO. 20 3/C, TWISTED, SHIELDED

• 100% COST TO VILLAGE OF ITASCA

INTERCONNECT TO IRVING PARK RD.

THE END OF THE TRACER CABLE SHALL BE CONTINUOUS AND EXTEND INTO THE CONTROLLER CABINET.

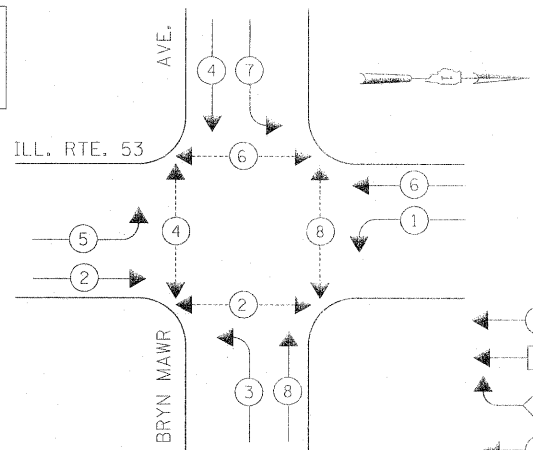


CABLE PLAN

(NOT TO SCALE)

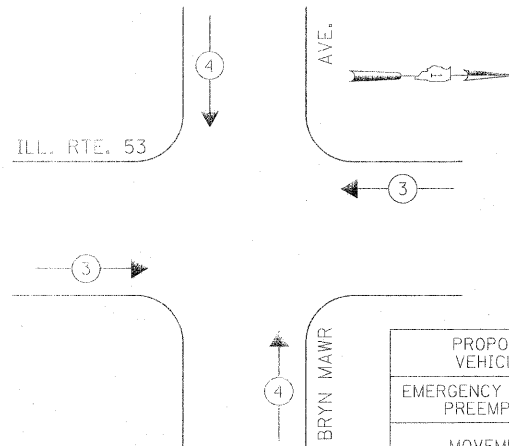
THE END OF THE TRACER CABLE SHALL BE CONTINUOUS AND EXTEND INTO THE CONTROLLER CABINET.

CONTROLLER SEQUENCE



PHASE DESIGNATION DIAGRAM

EMERGENCY VEHICLE PREEMPTION SEQUENCE



LEGEND

- ⊛ DUAL ENTRY PHASE
- ⊠ SINGLE ENTRY PHASE
- ◊ O.L. OVERLAP
- ⊙ PEDESTRIAN PHASE
- \* NUMBER REFERS TO ASSOCIATED PHASE

PROPOSED EMERGENCY VEHICLE PREEMPTORS		
EMERGENCY VEHICLE PREEMPTOR	3	4
MOVEMENT	←	↑

THE TRAFFIC SIGNAL CONTROL EQUIPMENT FOR THIS PROJECT SHALL BE "ECONOLITE" TO MATCH THE EXISTING ADJACENT SYSTEM.

THE CONTRACTOR SHALL RELOCATE THE EXISTING EMERGENCY VEHICLE PRIORITY SYSTEM EQUIPMENTS TO THE NEW TRAFFIC SIGNAL INSTALLATION AT ILL. RTE. 53 (ROHLWING RD.) & BRYN MAWR AVE.

I.D.O.T. TRAFFIC SIGNAL INSTALLATION ELECTRICAL SERVICE REQUIREMENTS					TOTAL WATTAGE
TYPE	NO LAMPS	WATTAGE		%OPERATION	
SIGNAL (RED)	16	INCAND.	LED	0.50	136
(YELLOW)	16	135	25	0.25	
(GREEN)	16	135	15	0.25	
ARROW	16	135	12	0.10	19.2
PED. SIGNAL	8	90	25	1.00	200
CONTROLLER	1	100	100	1.00	100
ILLUM. SIGN			25	0.05	
FLASHER				0.50	
ENERGY COSTS TO:					TOTAL = 615.2
VILLAGE OF ITASCA 550 WEST IRVING PARK ROAD ITASCA, ILLINOIS 60143-1795					
ENERGY SUPPLY CONTACT: CURTIS TOPPS PHONE: (630) 691-4356 COMPANY: COMMONWEALTH EDISON					

FILE NAME =	USER NAME = #USER#	DESIGNED - PKG	REVISED -
#FILE#		DRAWN - MAA, EA	REVISED -
		CHECKED - PKG, EA	REVISED -
		DATE - 5/18/2011	REVISED -

STATE OF ILLINOIS  
DEPARTMENT OF TRANSPORTATION

CABLE PLAN, PHASE DESIGNATION DIAGRAM,  
EMERGENCY VEHICLE PREEMPTION SEQUENCE, SCHEDULE OF QUANTITIES  
ILLINOIS ROUTE 53 (ROHLWING RD.) AT BRYN MAWR AVE.

SCALE: NONE SHEET NO. OF SHEETS STA. TO STA.

F.A.P. RTE.	SECTION	COUNTY	TOTAL SHEETS	SHEET NO.
2578	532B	DuPage	781	493
CONTRACT NO. 60477				
FED. ROAD DIST. NO. ILLINOIS FED. AID PROJECT				

Rev. 6-8-11