

STATE OF ILLINOIS
DEPARTMENT OF TRANSPORTATION
DIVISION OF HIGHWAYS

VOLUME I OF II

F.A. RTE.	SECTION	COUNTY	TOTAL SHEETS	SHEET NO.
I-55	0711.2R & 1011.1BR	COOK	741	1
ILLINOIS CONTRACT NO. 60999			D-91-328-00	
*741-5+21=757				

PROJECT LOCATED IN VILLAGE OF FOREST VIEW

FOR INDEX OF SHEETS, SEE SHEET NO. 2

DESIGN DESIGNATION

CENTRAL AVENUE: 35,000 (20) PRINCIPAL ARTERIAL 5.0 (PCC-20)
I-55 (RAMPS): 14,000 (20) INTERSTATE FREEWAY 5.0 (PCC-20)

	ADT (1996)	ADT (2020)	DESIGN SPEED	POSTED SPEED
CENTRAL AVENUE: SOUTH	32,200	35,000	45MPH	30MPH
OVER I-55	27,300	29,000	45MPH	35MPH
NORTH	21,900	24,000	45MPH	45MPH
INTERSTATE I-55: EASTBOUND	70,600	71,000	70MPH	55MPH
WESTBOUND	71,500	72,000	70MPH	55MPH
RAMPS: ENTERING I-55	12,000	14,000	60MPH	35MPH
EXITING I-55	12,000	14,000	30MPH	30MPH

DESCRIPTION OF PROJECT

CENTRAL AVENUE BRIDGE OVER ILLINOIS CENTRAL RAILROAD SN 016-3241. BRIDGE WIDENING, SUBSTRUCTURE REPAIRS AND DECK REMOVAL AND REPLACEMENT.

CENTRAL AVENUE BRIDGE OVER I-55 SN. 016-0724. BRIDGE WIDENING, REPAIRS AND SUPERSTRUCTURE REPLACEMENT.

CENTRAL AVENUE BRIDGE OVER BURLINGTON NORTHERN SANTA FE RAILROAD SN 016-3240. BRIDGE WIDENING, SUBSTRUCTURE REPAIRS AND DECK REMOVAL AND REPLACEMENT.

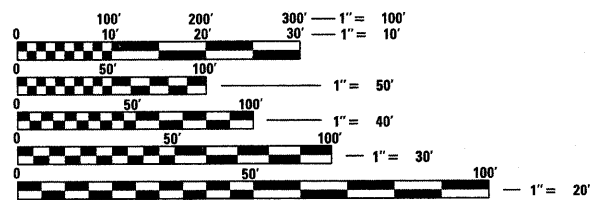
RETAINING WALL ALONG CENTRAL AVENUE, STA. 10+56.16 TO STA. 13+74.66 SN. 016-W821

RETAINING WALL ALONG RAMP 1, STA. 195+00.88 TO STA. 197+40.39 SN. 016-1304

RETAINING WALL ALONG RAMP 2, STA. 395+25.88 TO STA. 397+65.46 SN. 016-1305

RETAINING WALL ALONG RAMP 3, STA. 202+34.54 TO STA. 203+79.37 SN. 016-1306

RETAINING WALL ALONG RAMP 4, STA. 402+59.61 TO STA. 404+99.13 SN. 016-1307



FULL SIZE PLANS HAVE BEEN PREPARED USING STANDARD ENGINEERING SCALES. REDUCED SIZED PLANS WILL NOT CONFORM TO STANDARD SCALES. IN MAKING MEASUREMENTS ON REDUCED PLANS, THE ABOVE SCALES MAY BE USED.

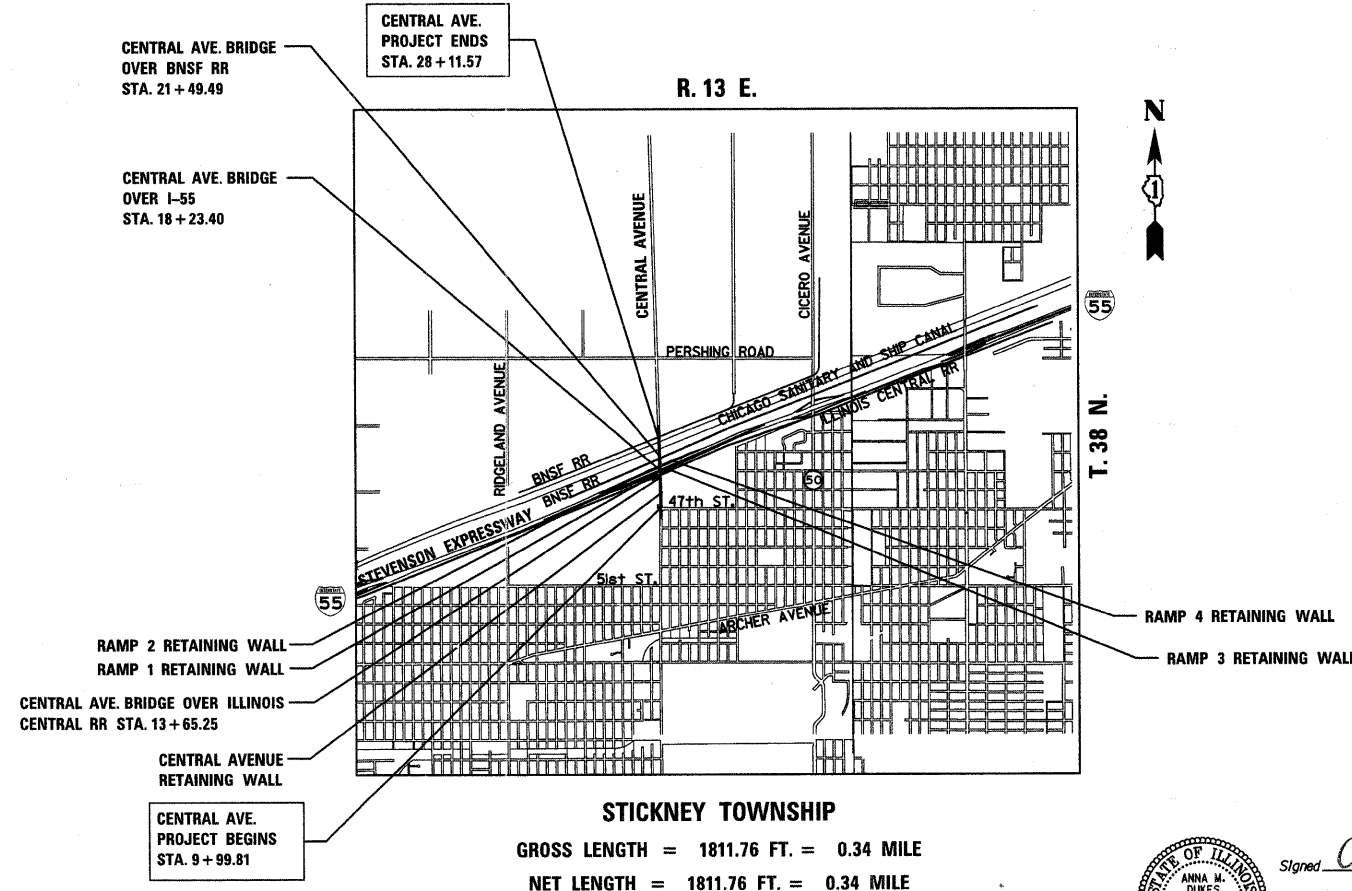
J.U.L.I.E.
JOINT UTILITY LOCATION INFORMATION FOR EXCAVATION
1-800-892-0123
OR 811

PROJECT ENGINEER: MICHELLE AQUINO
PROJECT MANAGER: RAJENDRA SHAH

CONTRACT NO. 60999

PROPOSED
HIGHWAY PLANS

FAI-55 - INTERSTATE 55
SECTION 0711.2R & 1011.1BR
PROJECT: ACIM-ACBHI-055-7 (260)286
INTERCHANGE RECONSTRUCTION
AND BRIDGE REHABILITATION
COOK COUNTY



STATE OF ILLINOIS
DEPARTMENT OF TRANSPORTATION
DIVISION OF HIGHWAYS

SUBMITTED MARCH 23 20 11

Diana M. O'Keefe
DEPUTY DIRECTOR OF HIGHWAYS, REGION ENGINEER

May 13 20 11
Scott E. Still, P.E.
acting ENGINEER OF DESIGN AND ENVIRONMENT

May 13 20 11
Christine M. Rood
DIRECTOR OF HIGHWAYS, CHIEF ENGINEER

PRINTED BY THE AUTHORITY
OF THE STATE OF ILLINOIS

STICKNEY TOWNSHIP
GROSS LENGTH = 1811.76 FT. = 0.34 MILE
NET LENGTH = 1811.76 FT. = 0.34 MILE

March 25, 2011

TYLIN INTERNATIONAL

Signed *Anna M. Dukes*
Anna M. Dukes, S.E. Il. Lic. No. 081-006598
Expires 11-30-2012
Date March 25, 2011
For drawings 251-309, 205-208

Signed *Douglas M. Jaskolski*
Douglas M. Jaskolski, P.E. Il. Lic. No. 062-049640
Expires 11-30-2011
Date March 25, 2011
For drawings 1-181, 310-341

Signed *Gregory R. Reilly*
Gregory R. Reilly, P.E. Il. Lic. No. 062-061281
Expires 11-30-2011
Date March 25, 2011
For drawings 182-204, 209-113

DISTRICT ONE DESIGN/CONSULTANT SERVICES PROJECT
MANAGER: RAJENDRA SHAH 847-705-4555