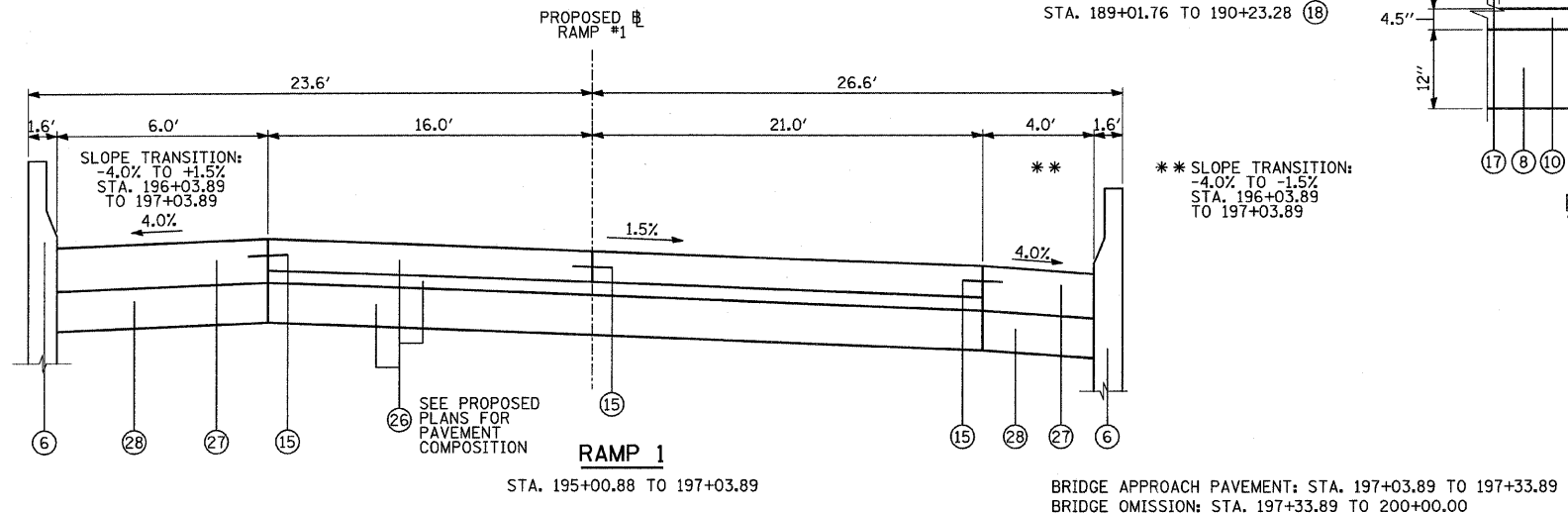
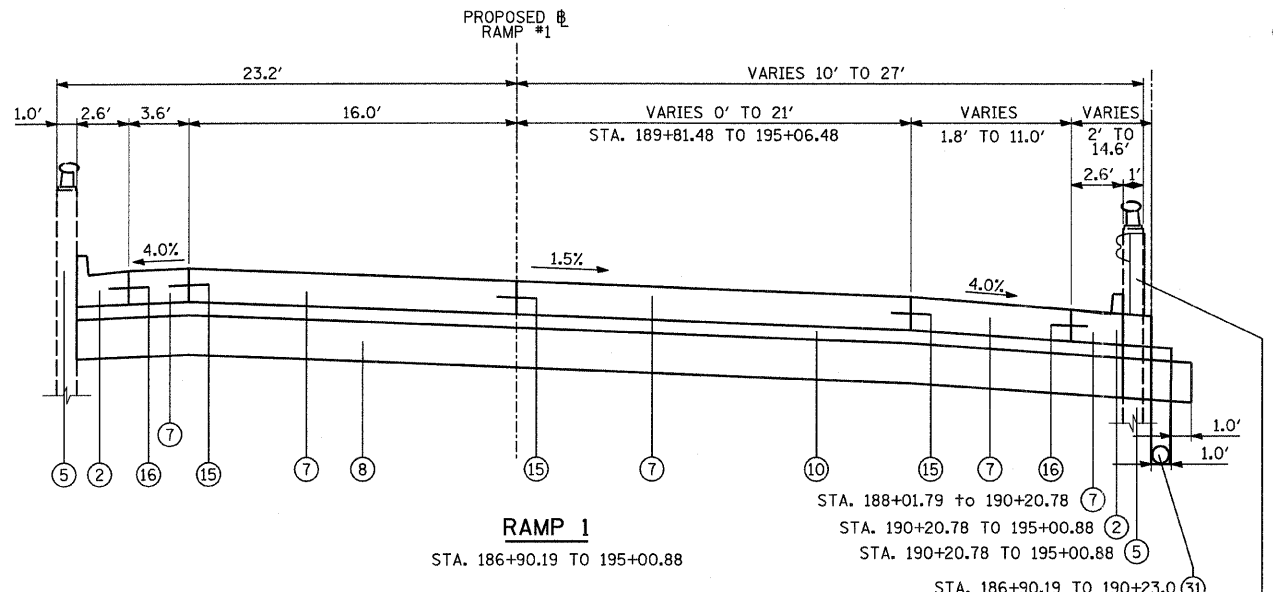
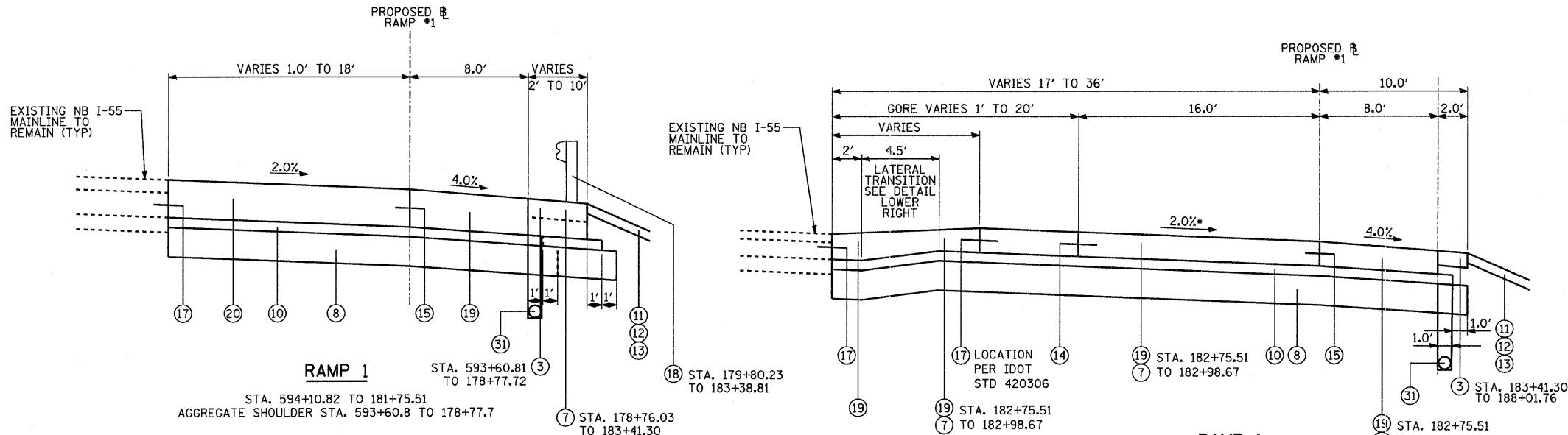


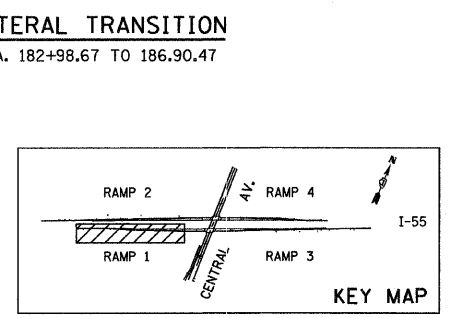
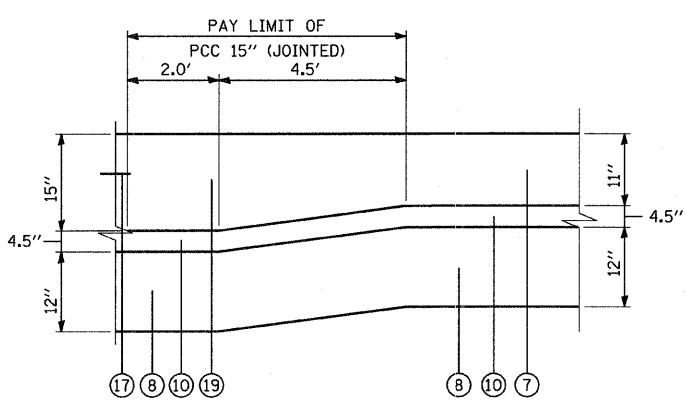
P:\01345\ROAD\55\typ1.dgn 4/28/2011 12:24 PM



RAMP 1
 STA. 181+75.51 TO 186+90.19
 SHOULDER STA. 183+41.30 TO 190+20.78
 *CROSS-SLOPE TRANSITION: STA. 183+37.25 (2%) TO 183+62.25 (1.5%)

RAMPS

STRUCTURAL DESIGN TRAFFIC:	YEAR 2014
PV = 10,357	SU = 1,052 MU = 2,255
ROAD/STREET CLASSIFICATION:	CLASS 1
PERCENT OF STRUCTURAL DESIGN TRAFFIC IN DESIGN LANE:	
P = 100%	S = 100% M = 100%
TRAFFIC FACTOR:	ACTUAL TF = 34.47 AC TYPE = XX
	MINIMUM TF = 11.17
AC GRADE:	BINDER = XXX SURFACE=XXX
SUBGRADE SUPPORT RATING:	
SSR = 2.00 (STA. +o)	
SSR = X.XX (STA. +o)	



- PROPOSED LEGEND**
- ① COMBINATION CONC. CURB & GUTTER, TYPE B-6.12
 - ② COMBINATION CONC. CURB & GUTTER, TYPE B-6.24
 - ③ AGGREGATE SHOULDERS, TYPE B, 6"
 - ④ CONCRETE MEDIAN, TYPE SB-6.12
 - ⑤ CONCRETE RETAINING WALL (EXISTING)
 - ⑥ MECHANICALLY STABILIZED EARTH RETAINING WALL (PROPOSED)
 - ⑦ PORTLAND CEMENT CONCRETE PAVEMENT, 11" (JOINTED)
 - ⑧ AGGREGATE SUBGRADE, 12"
 - ⑨ PORTLAND CEMENT CONCRETE SIDEWALK, 5"
 - ⑩ STABILIZED SUBBASE - HOT-MIX ASPHALT, 4 1/2"
 - ⑪ EROSION CONTROL BLANKET
 - ⑫ TOPSOIL FURNISH AND PLACE, 4"
 - ⑬ SEEDING, CLASS 2A
 - ⑭ SAWED LONGITUDINAL JOINT WITH NO. 6 TIE BARS @ 30" CENTERS (INCLUDED IN COST OF PCC PAVEMENT)
 - ⑮ LONGITUDINAL CONSTRUCTION JOINT WITH NO. 6 TIE BARS @ 24" CENTERS (INCLUDED IN COST OF PCC PAVEMENT)
 - ⑯ CONSTRUCTION JOINT WITH NO. 6 TIE BARS @ 24" CENTERS (INCLUDED IN COST OF CURB AND GUTTER OR MEDIAN)
 - ⑰ LONGITUDINAL CONSTRUCTION JOINT WITH NO. 6 TIE BARS @ 24" CENTERS DRILL AND GROUT IN PLACE (INCLUDED IN COST OF PCC PAVEMENT)
 - ⑱ STEEL PLATE BEAM GUARDRAIL, TYPE A
 - ⑲ PORTLAND CEMENT CONCRETE PAVEMENT, 15" (JOINTED)
 - ⑳ CRC PAVEMENT, 15"
 - ㉑ HOT-MIX ASPHALT SURFACE COURSE MIX "D", N70, 1-1/2"
 - ㉒ HOT-MIX ASPHALT BINDER COURSE, IL 19.0, N70, 12"
 - ㉓ HOT-MIX ASPHALT BINDER COURSE, IL 19.0, N70, 13.5"
 - ㉔ SUBBASE GRANULAR MATERIAL, TYPE B 6"
 - ㉕ AGGREGATE BASE COURSE, TYPE B
 - ㉖ BRIDGE APPROACH PAVEMENT CONNECTOR (PCC)
 - ㉗ MOMENT SLAB (SEE MSE WALL PLANS)
 - ㉘ REINFORCED SOIL MASS (SEE MSE WALL PLANS)
 - ㉙ PROPOSED SINGLE FACE CONCRETE BARRIER (SPECIAL)
 - ㉚ PROPOSED CONCRETE BARRIER BASE (SPECIAL)
 - ㉛ PROPOSED PIPE UNDERDRAINS, 8" SPECIAL (36" BELOW PAVED SURFACE)
 - ㉜ POLYMERIZED HOT-MIX ASPHALT SURFACE COURSE, MIX "F", N90, 1 1/2"

TYLIN INTERNATIONAL	USER NAME = *USER*	DESIGNED - RLB	REVISED -	STATE OF ILLINOIS DEPARTMENT OF TRANSPORTATION	CENTRAL AVENUE OVER I-55 PROPOSED TYPICAL SECTIONS - RAMP 1		F.A.I. RTE. I-55	SECTION 0711.2R & 1011.1BR	COUNTY COOK	TOTAL SHEETS 741	SHEET NO. 14	
	PLOT SCALE = *SCALE*	DRAWN - RLB	REVISED -		SCALE: NONE	SHEET NO. 4 OF 8 SHEETS	STA. TO STA.	ILLINOIS FED. AID PROJECT		CONTRACT NO. 60999		
	PLOT DATE = 4/28/2011	CHECKED - AZ	REVISED -									
		DATE - 03/25/2011	REVISED -									