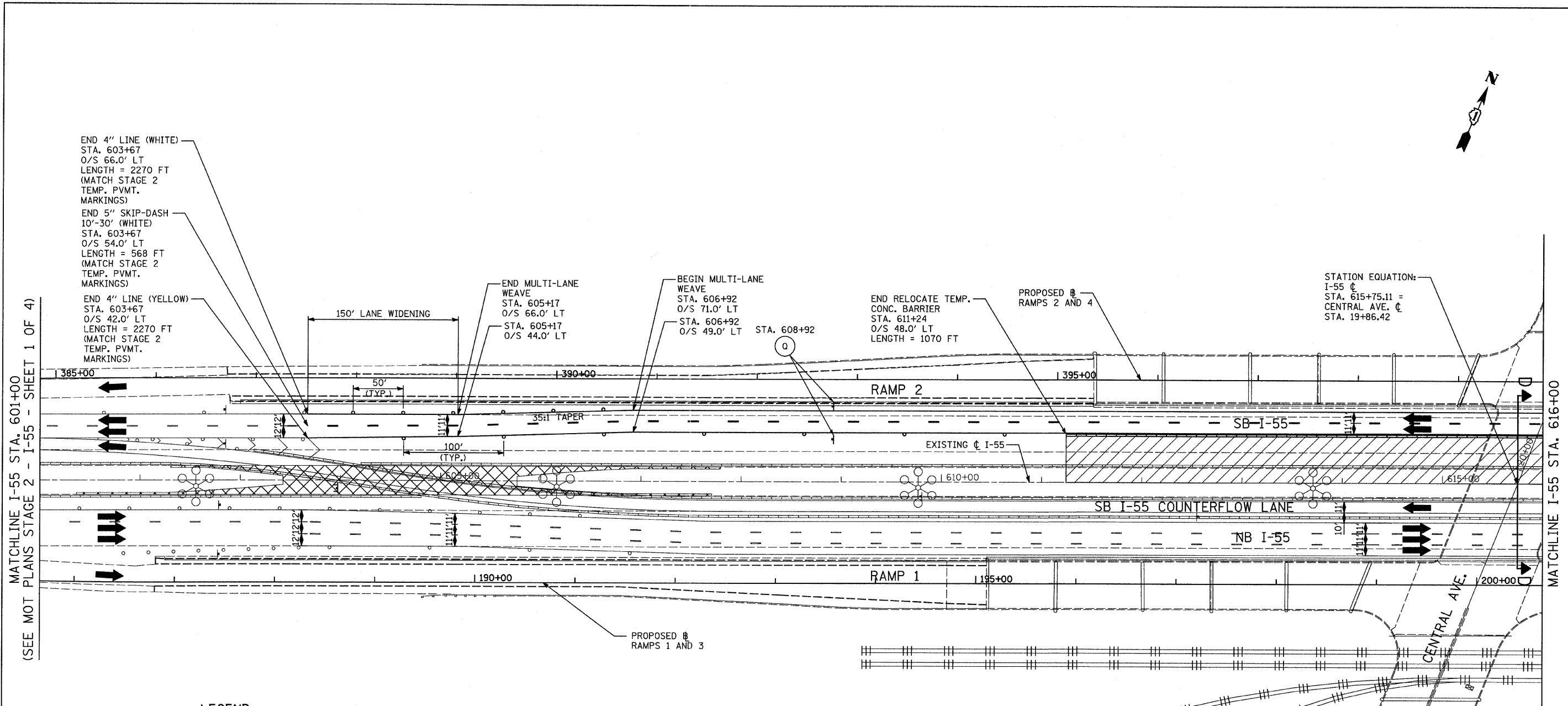
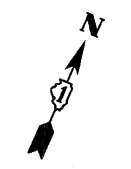


P:\01345\road\55motML22a.dgn 4/28/2011 12:32:33 PM



END 4" LINE (WHITE)  
STA. 603+67  
O/S 66.0' LT  
LENGTH = 2270 FT  
(MATCH STAGE 2  
TEMP. PVMT.  
MARKINGS)

END 5" SKIP-DASH  
10'-30' (WHITE)  
STA. 603+67  
O/S 54.0' LT  
LENGTH = 568 FT  
(MATCH STAGE 2  
TEMP. PVMT.  
MARKINGS)

END 4" LINE (YELLOW)  
STA. 603+67  
O/S 42.0' LT  
LENGTH = 2270 FT  
(MATCH STAGE 2  
TEMP. PVMT.  
MARKINGS)

END MULTI-LANE  
WEAVE  
STA. 605+17  
O/S 66.0' LT  
STA. 605+17  
O/S 44.0' LT

BEGIN MULTI-LANE  
WEAVE  
STA. 606+92  
O/S 71.0' LT  
STA. 606+92  
O/S 49.0' LT

END RELOCATE TEMP.  
CONC. BARRIER  
STA. 611+24  
O/S 48.0' LT  
LENGTH = 1070 FT

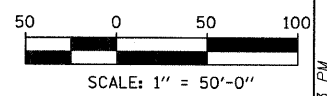
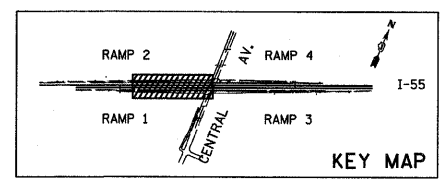
STATION EQUATION:  
I-55 C  
STA. 615+75.11 =  
CENTRAL AVE. C  
STA. 19+86.42

MATCHLINE I-55 STA. 601+00  
(SEE MOT PLANS STAGE 2 - I-55 - SHEET 1 OF 4)

MATCHLINE I-55 STA. 616+00

- LEGEND:**
- TEMPORARY CONCRETE BARRIER
  - TRAFFIC MOVEMENT
  - WORK ZONE
  - TEMPORARY PAVEMENT (INTERSTATE)
  - BARRICADE, TYPE III
  - DRUM WITH MONO-DIRECTIONAL STEADY BURNING LIGHT
  - ARROW BOARD
  - M.O.T. APPURTENANCES REMAINING FROM PREVIOUS STAGES
  - M.O.T. SIGNING (SEE SIGNING LEGEND FOR SIGN TYPE AND PANEL SIZE)

**NOTES:**  
1. GLARE SCREENS SHALL BE LOCATED ALONG THE TEMPORARY CONCRETE BARRIER WALL FROM STATION 602+31 TO 629+41.



<b>TYLIN INTERNATIONAL</b>	USER NAME = #USER#	DESIGNED - JDF	REVISED -	<b>STATE OF ILLINOIS DEPARTMENT OF TRANSPORTATION</b>	<b>CENTRAL AVENUE OVER I-55 MAINTENANCE OF TRAFFIC PLANS STAGE 2A - I-55</b>			F.A.I. RTE. I-55	SECTION 0711.2R & 1011.1BR	COUNTY COOK	TOTAL SHEETS 741	SHEET NO. 88
	PLOT SCALE = #SCALE#	CHECKED - JPM	REVISED -		SCALE: 1" = 50'    SHEET NO. 1 OF 2 SHEETS    STA. 601+00 TO STA. 616+00			CONTRACT NO. 60999				
	PLOT DATE = 4/28/2011	DATE - 03/25/2011	REVISED -					FED. ROAD DIST. NO.    ILLINOIS FED. AID PROJECT				